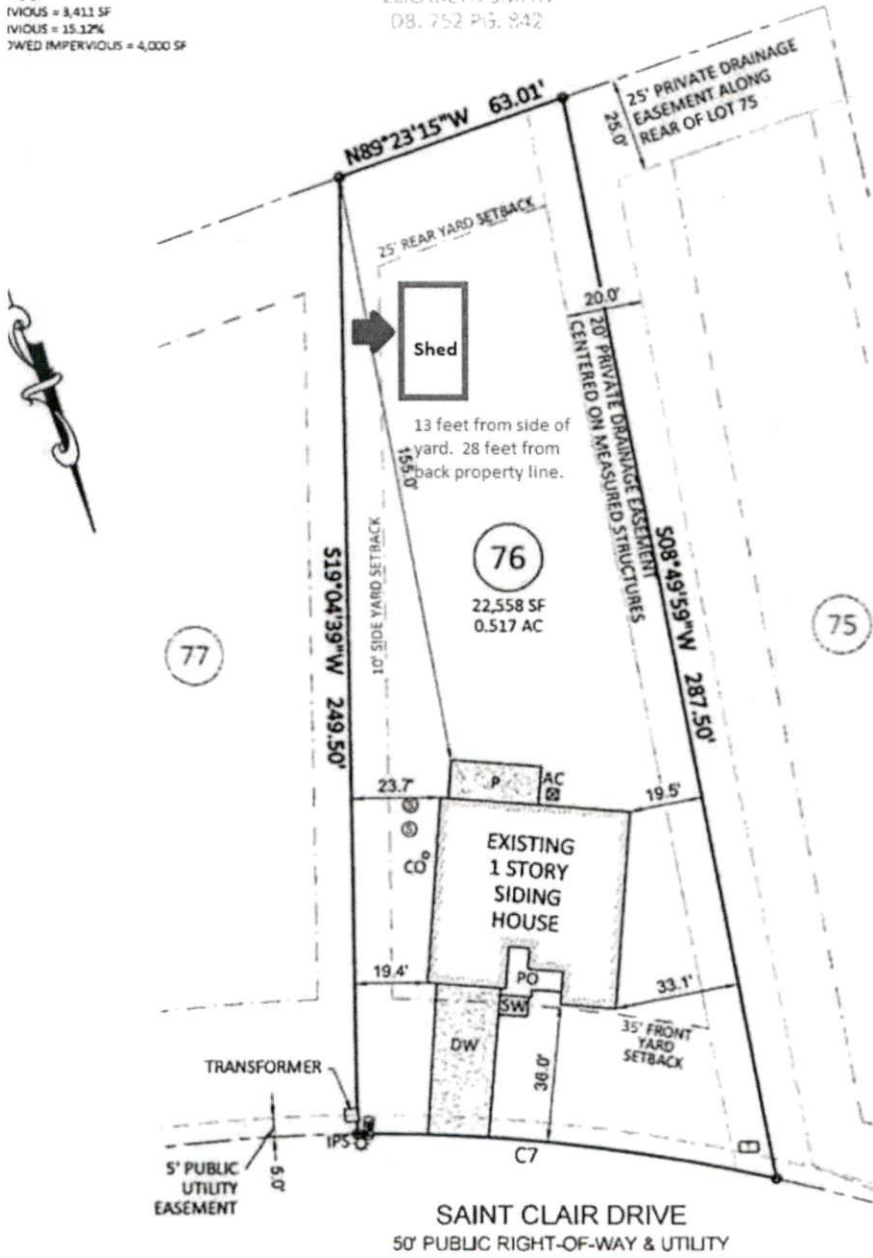


MATION:

112,000
A = 0.517 AC = 22,558 SF
= 2,852 SF
= 125 SF
LK = 38 SF
AY = 647 SF
240 SF
= 9 SF
VIOLUS = 3,411 SF
VIOLUS = 15.12%
3WED IMPERVIOUS = 4,000 SF

N/F
CHARLES R. &
ELIZABETH SMITH
DB. 752 PG. 842



SCALE:
1" = 40 FT.