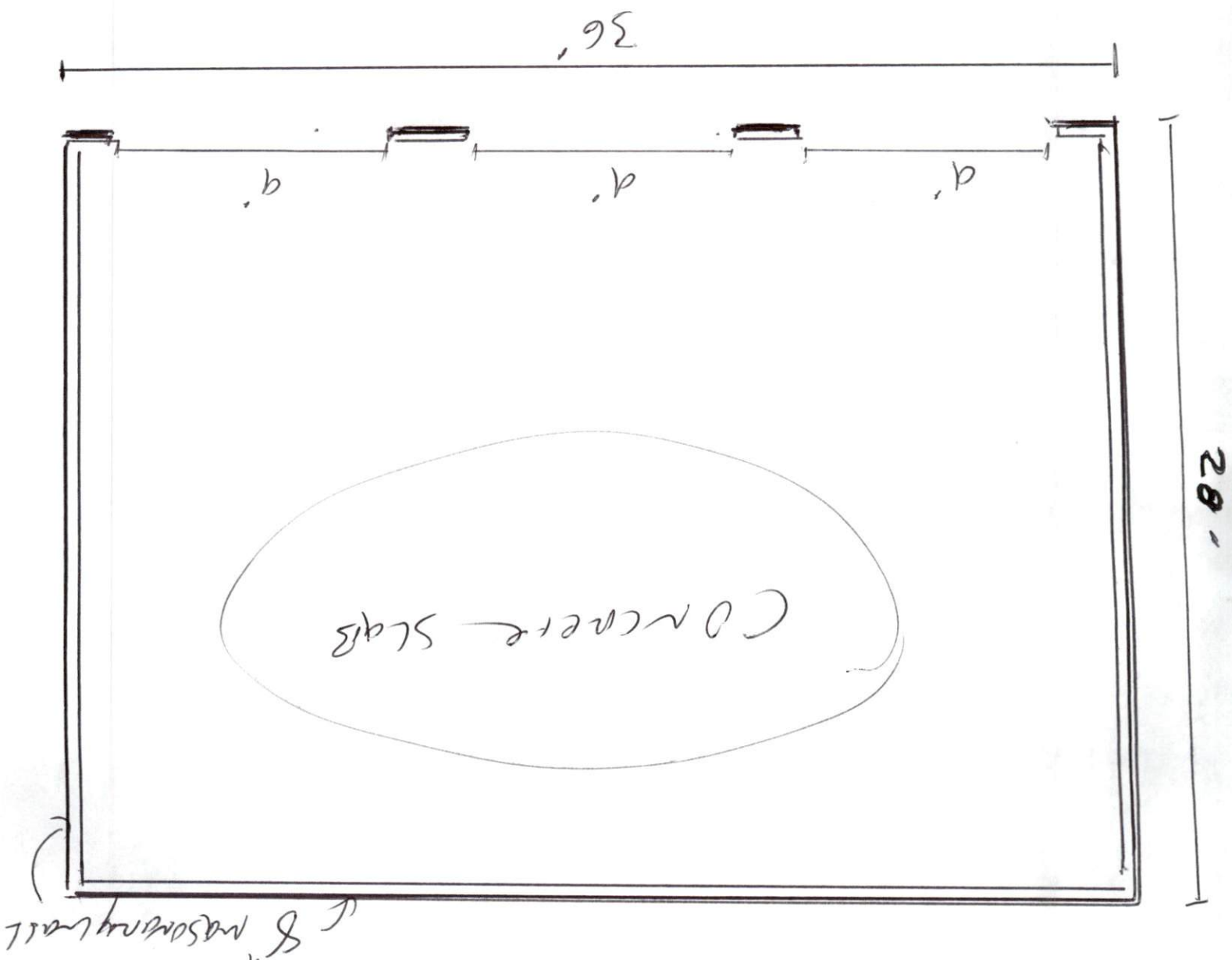


Wayne OQUIN 7515 OLD US 421 LITTLE ROCK

### Garage Foundation



Footings: 18" wide x 10" deep  
Walls: 8" wide masonry  
Top 8" solid masonry  
Anchor bolts (6" o/c)  
1" From corners  
1" From green plate seam

18" wide x 10" deep - concrete