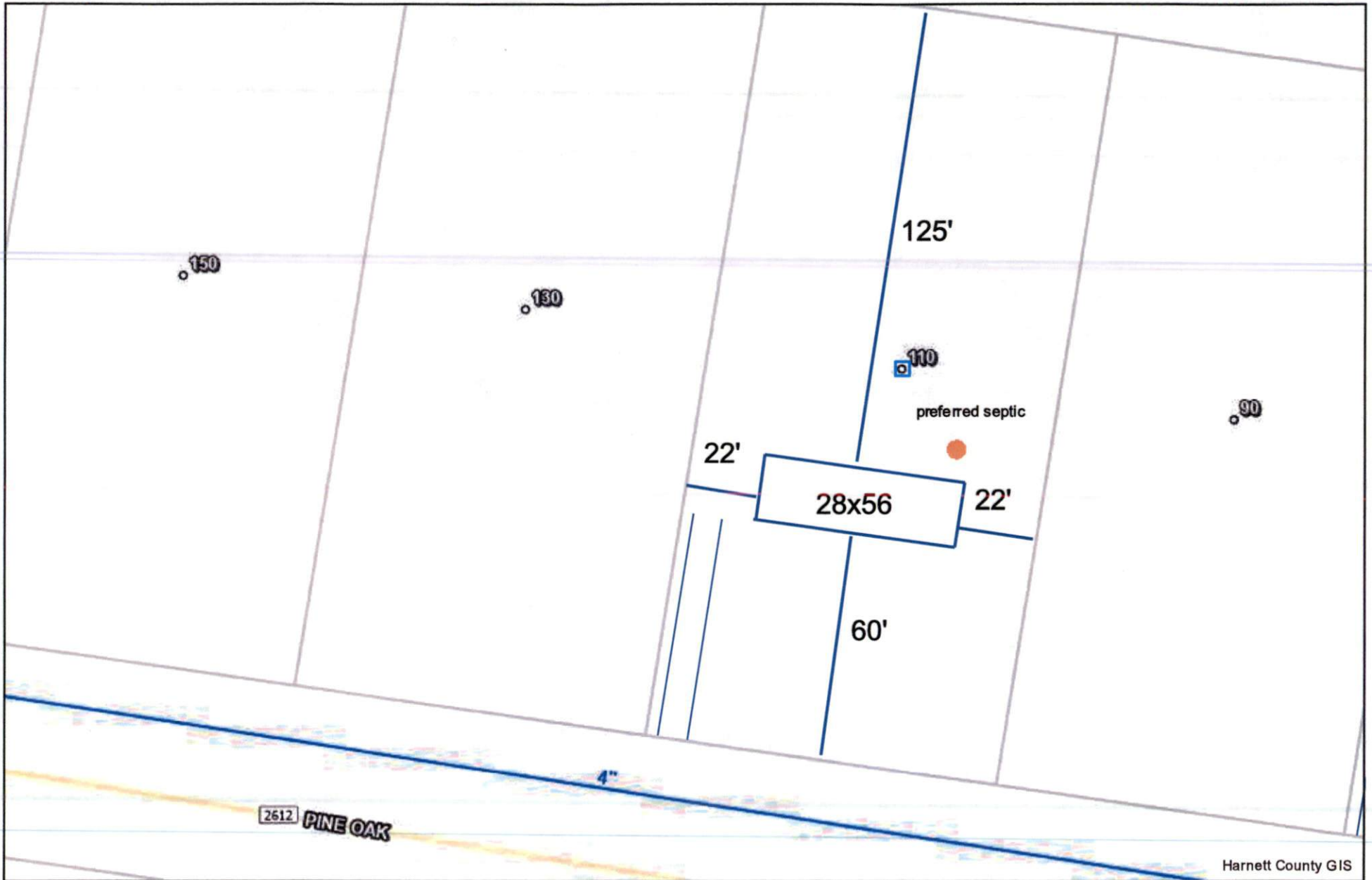


Spec House

110 Pine oak

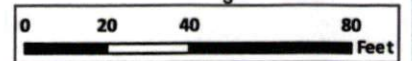
Harnett GIS

NOT FOR LEGAL USE



Harnett County GIS

- | | | |
|---|--|--|
|  Surrounding County Boundaries | County Water Mains |  6 - 20 |
|  City Limits |  2 - 5 | Coats Water Mains |
|  County Boundary |  6 - 36 |  2 - 5 |
|  Address Numbers | Angier Water Mains |  6 - 12 |
| |  2 - 5 | |



1 inch = 47 feet

GIS/E-911 Addressing
November 22, 2022