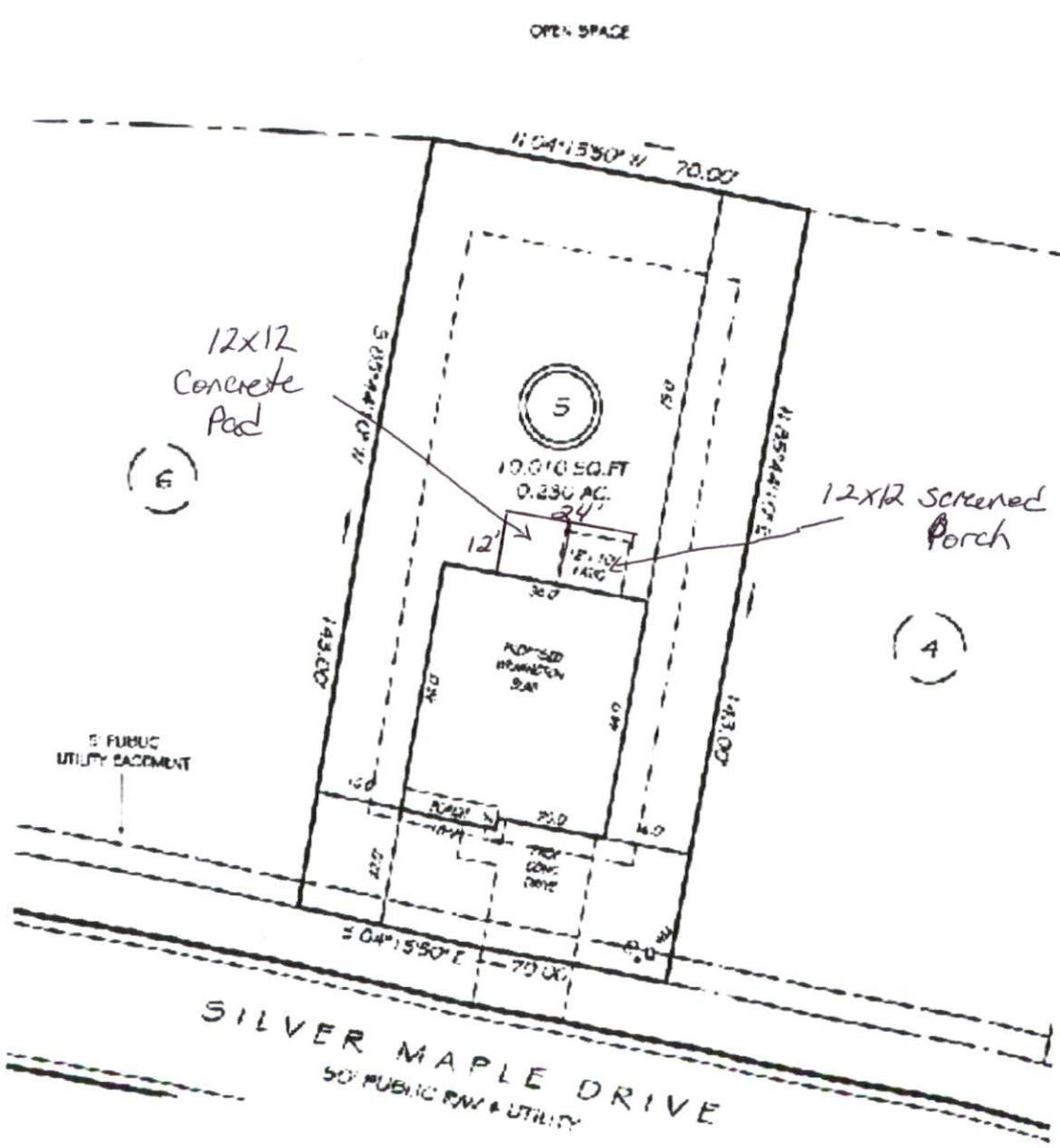


I, MICHAEL P. GRIFFIN, certify that under my direction and supervision this map was drawn from an accurate field survey; that the area of closure of the survey as calculated by coordinates is 1.13,000±; and the area shown herein was calculated by coordinates.

Witness my hand and seal this day of MARCH 2022

PA 2022 1507 1506.152
HARRIS CO. REGISTRY



5' PUBLIC UTILITY EASEMENT

PREVIOUS AREAS

HOUSE	1,708 SQ. FT.
DRIVE & WALLS	445 SQ. FT.
PATIO	120 SQ. FT.
TOTAL	2,273 SQ. FT.
A. CONT.	5,000 SQ. FT.

SETBACKS

FRONT	20'
REAR	15'
SIDE	10'
CORNER SIDE	15'

PRELIM
NOT FOR
SALES

ARY
ON.

LEGEND
 1/8" = 1' SCALE
 EXISTING IRON PIPE
 NEW PIPE SET
 RIGHT OF WAY
 1/8" = 1' SCALE
 PLANNED END SECTION
 WATER METER

