

Magnetic North
Map Book 1987, Page 587

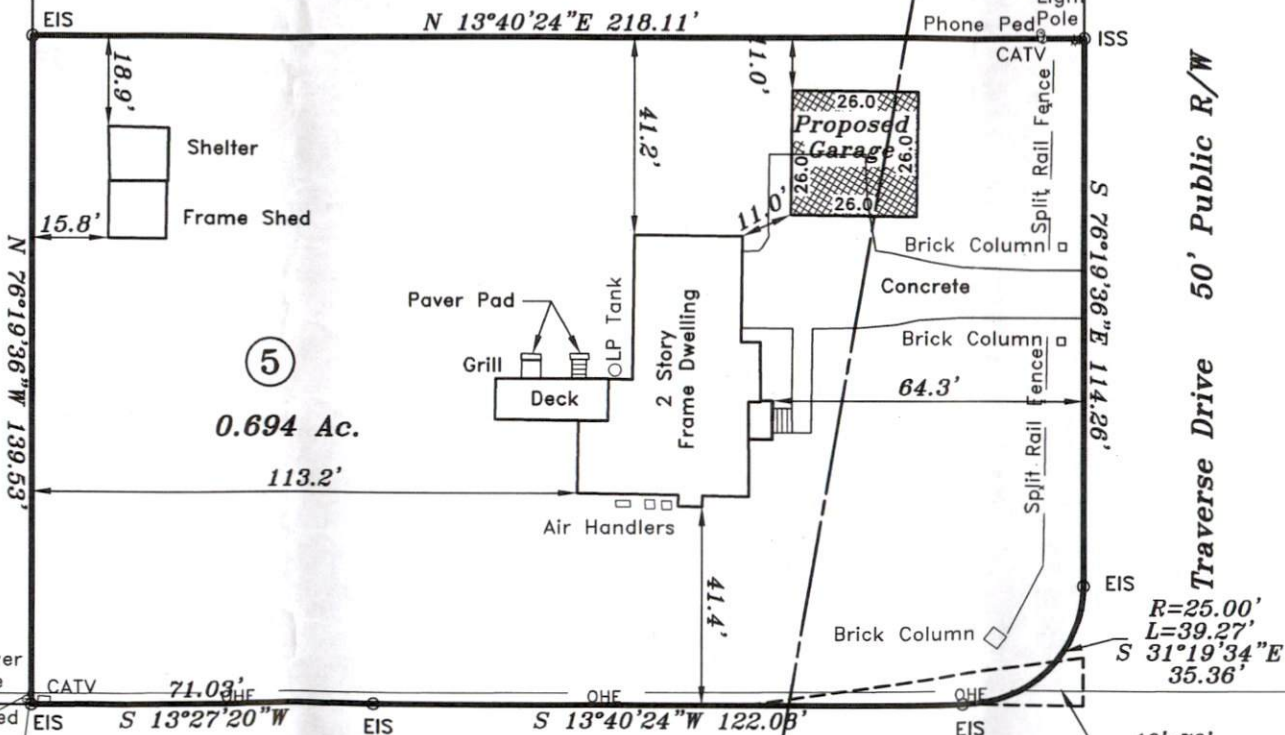
35

Joseph A. Diniz
Miriam G. Diniz
Deed Book 2925, Page 462
Plat Cabinet "C", Slide 135C

Harnett County
Approximate Location
of County Line
Wake County

6

Marthinus Bekker
Deed Book 3692, Page 77
Plat Cabinet "C", Slide 135C

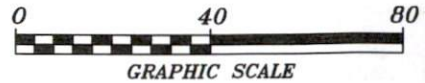


5
0.694 Ac.
113.2'

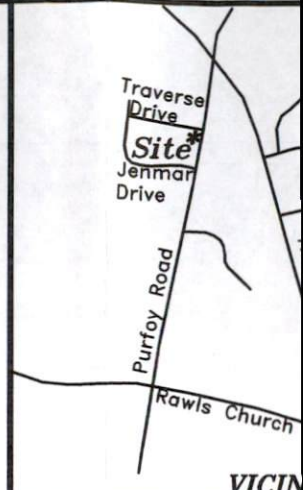
$R=25.00'$
 $L=39.27'$
 $S\ 31^{\circ}19'34''E$
 $35.36'$

SR 1301 Purfoy Road 60' Public R/W

Traverse Drive 50' Public R/W



GRAPHIC SCALE



VICINITY
4001 Traverse Drive
Lot 5, Phase 2
Plat Cabinet "C", Slide 135C
Book of Maps 1987, Page 587
PIN: 0665
Owned By, Surveyed By
Franklin Paula

Black River Townships
Middle Creek Townships
Scale: 1" = 40'

Surveyed by
STANCIL & COMPANY
Professional Land Surveyors
P.O. Box 730,
919-639-2133
stancilsurvey.com



NOT FOR CONSTRUCTION