

GREG ROBINSON, P.E.
CONSULTING ENGINEER

6512 Six Forks Road, Suite 403A
Raleigh, North Carolina 27615

919 846 4752
info@gar-pe.com

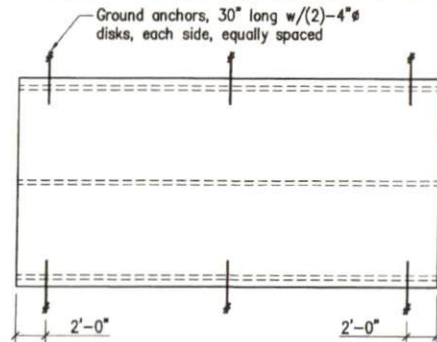
THE **Shed Depot**
OF NORTH CAROLINA



1732 Westover Drive
Sanford, North Carolina 27330

919 776 0206
info@sheddepotnc.com

14'-0" x 14'-0" to 14'-0" x 28'-0"
A-Frame Shed



Ground Anchors

(Ground_Anchors) Scale: 1/8"=1'-0"

Ground Anchor Schedule		(ANCHOR SCHED)
Building Length	Number of Ground Anchors Each Long Side	
30 ft - 36 ft	3	
12 ft - 28 ft	2	

Notes:

1. Minimum uplift capacity of each anchor: 2,300 pounds
2. Install ground anchors and strapping in accordance with manufacturer's instructions



Gregory A. Robinson
24 APR 19

GENERAL NOTES AND OUTLINE SPECIFICATIONS

01000 GENERAL

1. Design Live Loads
Floor 40 psf
Roof 20 psf
2. Ground Snow Loads (2018 NC Building Code, 2015 IBC, ASCE 7-10)
Ground Snow Load: 15 psf
3. Wind loads (2018 NC Building Code, 2015 IBC, ASCE 7-10)
Basic Wind Velocity (ultimate): 120 mph; Exposure: C; Category III
4. Lateral design controlled by Wind Loads.

02000 FOUNDATION

1. Design soil bearing capacity: 2,000 psf (presumed).

06090 PRE-ENGINEERED WOOD CONNECTORS

1. Connectors shall be hot-dipped galvanized or electro-plated galvanized with a minimum coating of G90.
2. Nails shall be "common" unless otherwise noted in the drawings.

06110 WOOD FRAMING

1. Unless noted otherwise: kiln-dried, S-P-F, #2 grade, surfaced dry, 15 percent maximum moisture content.
Floor joists: preservative-treated, kiln-dried, Southern Pine, #2 grade, surfaced dry, 15 percent maximum moisture content.
Mud sills: preservative treated, kiln-dried, Southern Pine, #2 grade, surfaced dry, 19 percent maximum moisture content.

2. Nail sizes:	Pennyweight	Length (inches)	Diameter (inches)
	8d	2.5	0.131
	10d	3	0.148
	12d	3.25	0.148

06120 STRUCTURAL WOOD PANELS

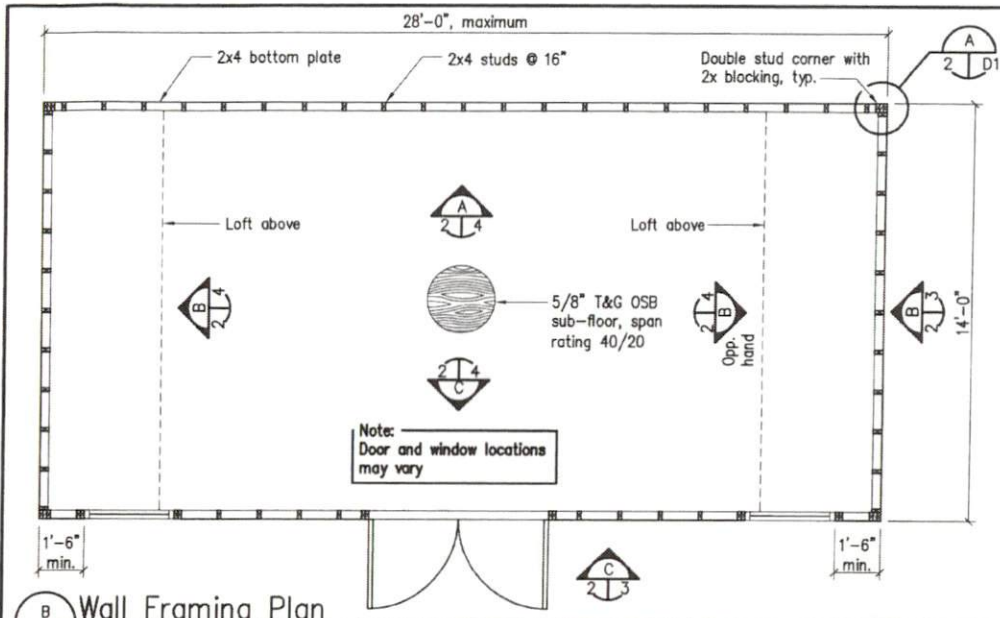
1. Sheathing shall conform to the grading rules of U.S. Product Standard PS 1, latest edition, and shall have appropriate grade trade mark of an American Plywood Association approved agency on each plywood panel. Sheathing shall be APA rated sheathing in thicknesses and span ratings shown drawings. Sheathing shall be applied in full sheets or in largest pieces practical for the area being covered.
2. Particleboard sheathing: ANSI A208.1 APA Oriented Strand Board; wood flakes set with waterproof resin binder; unsanded faces.
3. Secure roof sheathing perpendicular to framing members with ends staggered and sheet ends over firm bearing.
4. Secure wall sheathing with long dimension parallel to wall studs, with ends over firm bearing and staggered.
5. Install sheathing two span continuous minimum.

DRAWING INDEX:

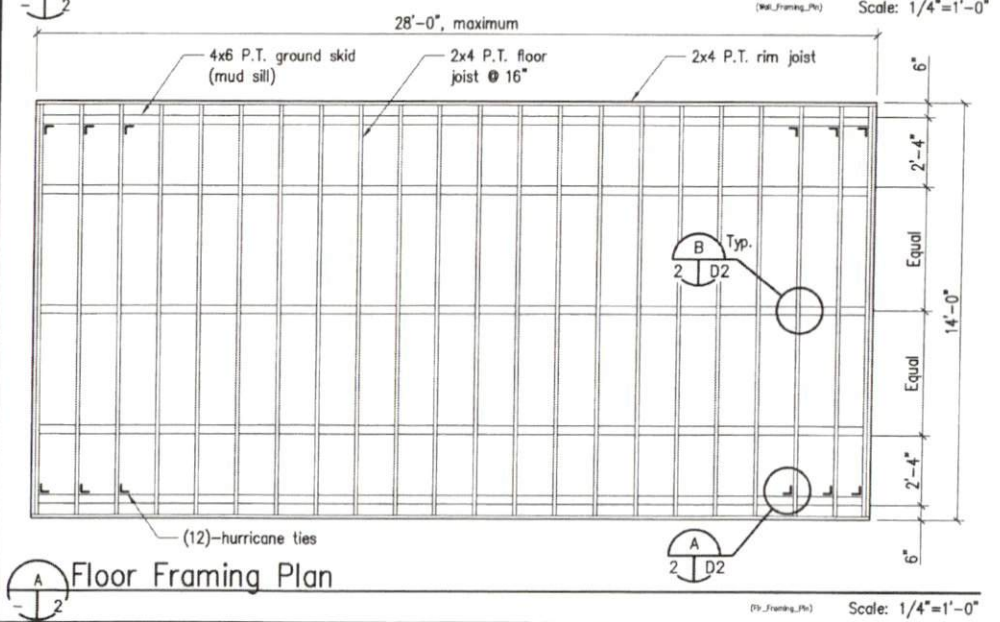
- C1 Cover Sheet and General Notes
- 2 Floor and Wall Framing Plans
- 3 Roof Framing Plans and Exterior Elevations
- 4 Wall Framing Elevations and Wall Section
- D1 Details
- D2 Details

GARPE Project #19009
Date: 24APR19

SHT_C1



Wall Framing Plan (W1_Framing_Pln) Scale: 1/4"=1'-0"



Floor Framing Plan (F1_Framing_Pln) Scale: 1/4"=1'-0"

NORTH CAROLINA
PROFESSIONAL
SEAL
13779
ENGINEER
GREGORY A. ROBINSON

Gregory A. Robinson
24 APR 19

THE Shed Depot
OF NORTH CAROLINA

GREG ROBINSON, P.E.
CONSULTING ENGINEER

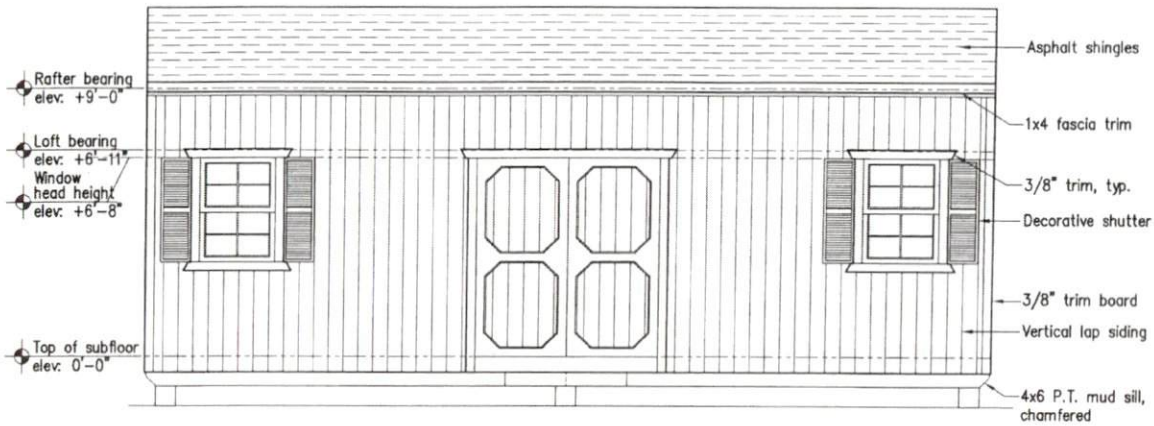
6512 Six Forks Road, Suite 403A
Raleigh, North Carolina 27615
(919) 844-1352 (919) 847-6555 Fax
greg@ga-ro.com

14' x 14' to 28' x 9' Storage Shed

CARPE Job # 19009

Drawn	GAR
Checked	GAR
Date	24APR19
Rev	
Rev	

2
2 of 6

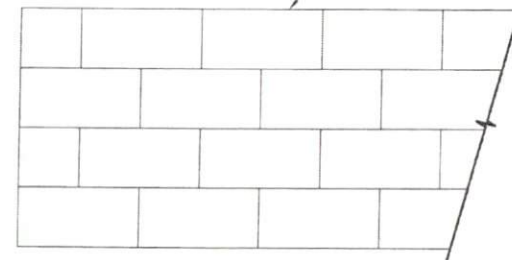


C Exterior Elevation

(Ext.,Div.1) Scale: 1/4"=1'-0"

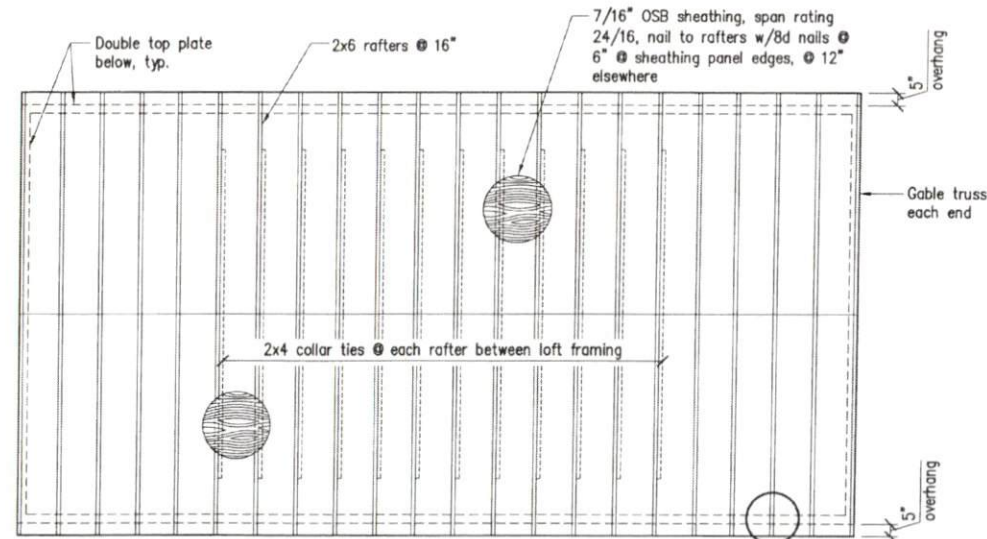


Stagger joints 2-28-19



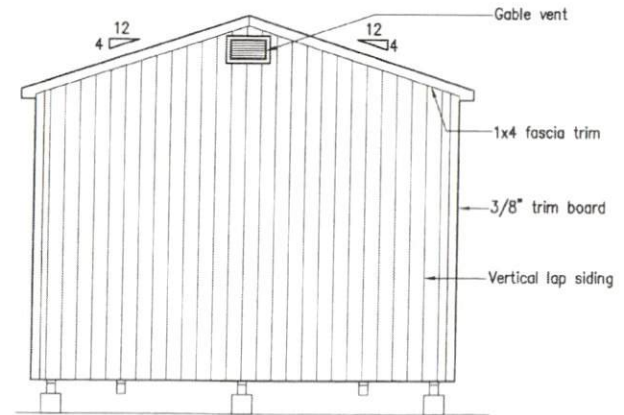
D Sheathing Joint Pattern

(Sheathing_Joint_Pattern) Scale: N.T.S.



A Roof Framing Plan

(Roof_Framing_Plan) Scale: 1/4"=1'-0"



B Exterior Elevation

(Ext.,Div.2) Scale: 1/4"=1'-0"



THE Shed Depot OF NORTH CAROLINA

GREG ROBINSON, P.E.
CORPORATE ENGINEER

6512 Six Forks Road, Suite 493A
Raleigh, North Carolina 27615
(919) 844-4152 (919) 847-4455 FAX
SHE@SHED.DEP.COM



14' x 14' to 28' x 9' Storage Shed

GARPE Job # 19009

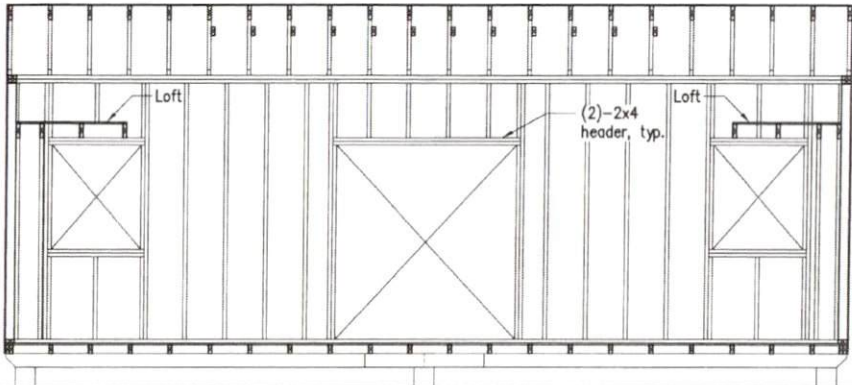
Drawn	GAR
Checked	GAR
Date	24APR19
Rev	
Rev	

3

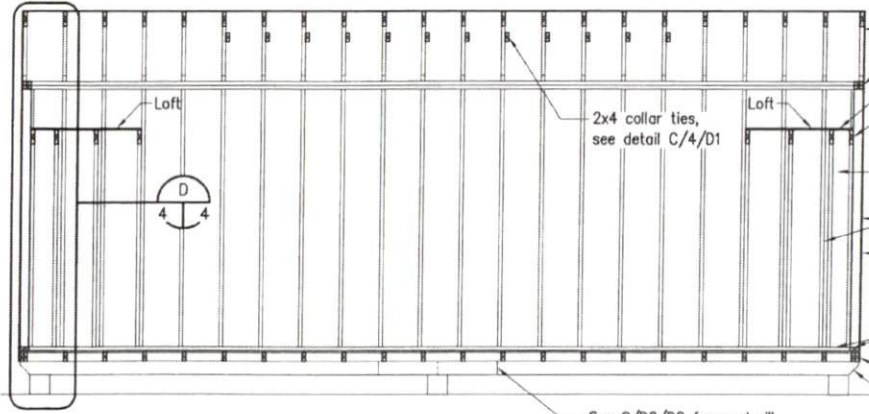
3 of 6



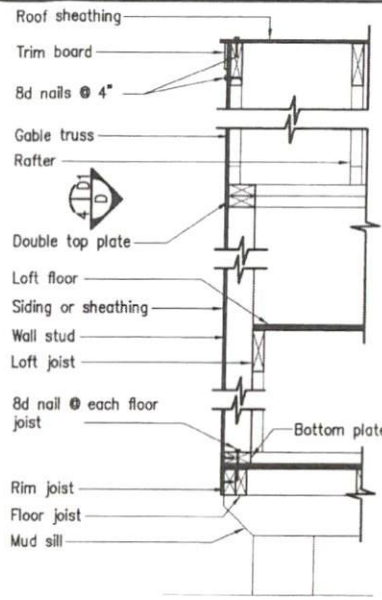
garpe
24 APR 19



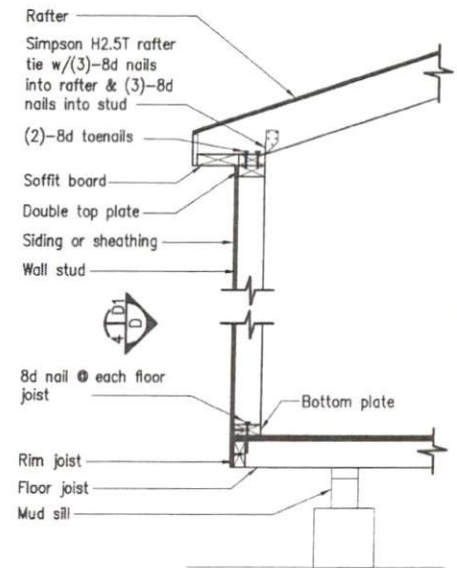
C Wall Framing Elevation
Scale: 1/4"=1'-0"



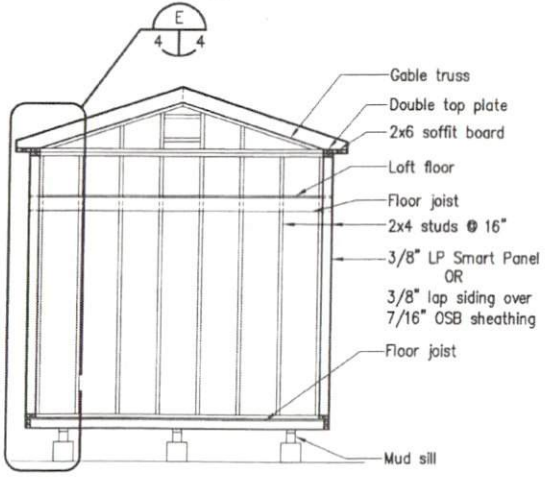
A Wall Framing Elevation
Scale: 1/4"=1'-0"



D Wall Section
Scale: 3/4"=1'-0"



E Wall Section
Scale: 3/4"=1'-0"



B Wall Framing Elevation
Scale: 1/4"=1'-0"



GREG ROBINSON, P.E.
CORPORATE ENGINEER

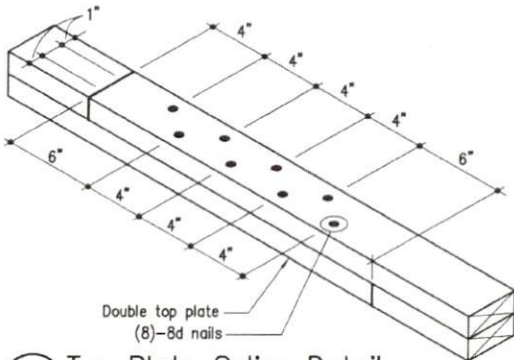
6512 Six Forks Road, Suite 402A
Raleigh, North Carolina 27615
(919) 846-1151 (919) 847-8557 fax
greg@garpe.com



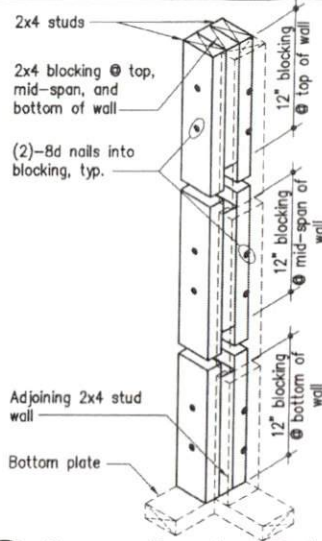
14' x 14' to 28' x 9' Storage Shed

GARPE Job # 19009

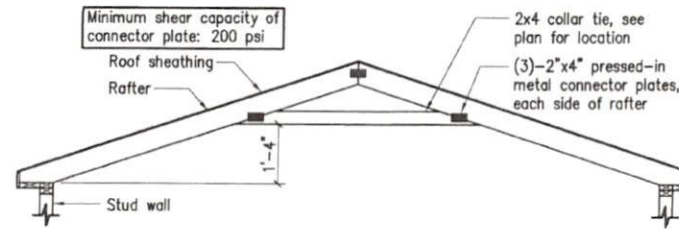
Drawn	GAR
Checked	GAR
Date	24 APR 19
Rev	
Rev	



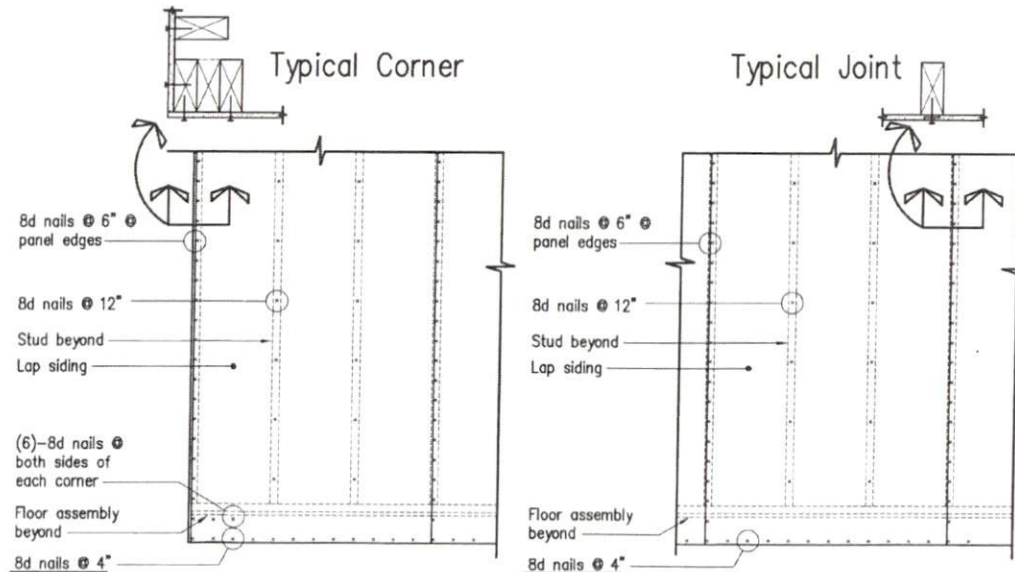
A Top Plate Splice Detail
 (Top_Plate_Splice) Scale: 1 1/2"=1'-0"



B Corner Framing Detail
 (Corner_Detail) Scale: 1"=1'-0"



C Collar Tie Attachment Detail
 (Collar_Tie) Scale: 3/8"=1'-0"



D Panel Nailing Patterns
 (Nail_Pattern) Scale: 1/2"=1'-0"



Gregory A. Robinson
 24APR19

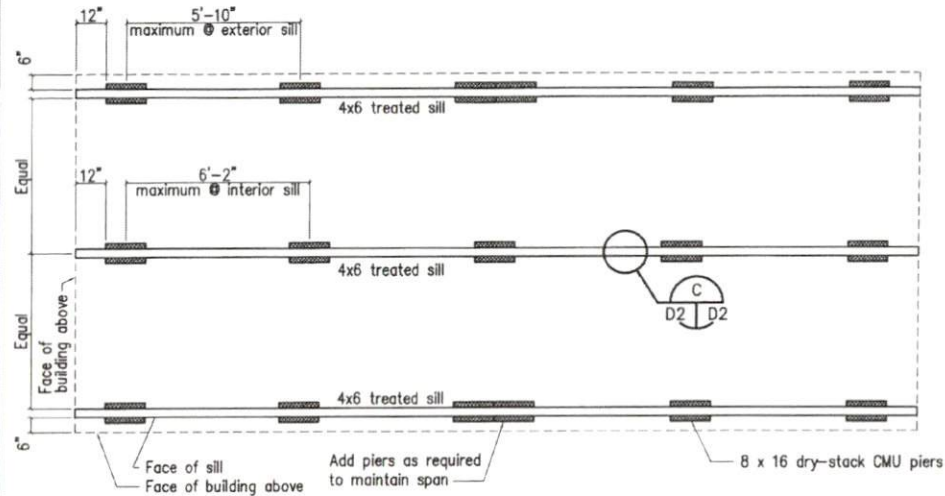


GREG ROBINSON, P.E.
 ENGINEERING

6512 Six Forks Road, Suite 403A
 Raleigh, North Carolina 27615
 (919) 866-6352 (919) 843-0555 fax
 greg@shed-pe.com

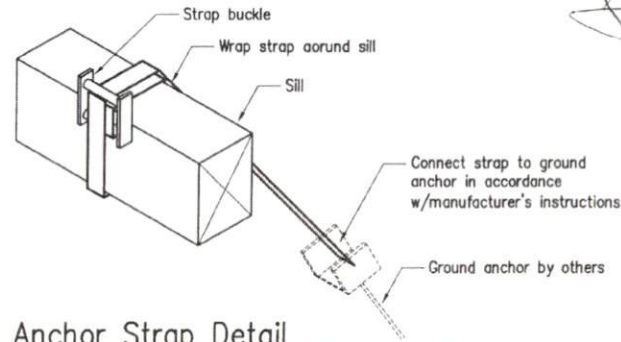
14' x 14' to 28' x 9' Storage Shed

Drawn GAR
 Checked GAR
 Date 24APR19
 Rev
 Rev



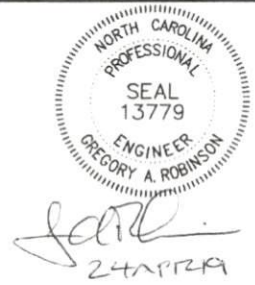
Floor Framing and Foundation Pier Plan, 14' x 28' (maximum)

(SILL) Scale: 1/4"=1'-0"



Anchor Strap Detail

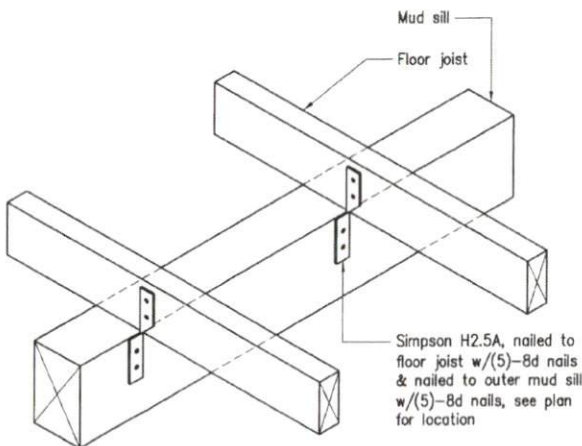
(STRAP) Scale: 1 1/2"=1'-0"



THE Shed Depot
OF NORTH CAROLINA

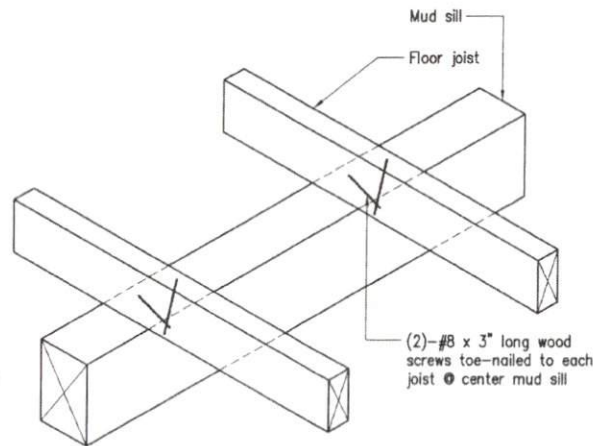
ERIC ROBINSON, P.E.
CORPORATE ENGINEER

6512 Six Forks Road, Suite 403A
Raleigh, North Carolina 27615
(919) 844-4152 (919) 844-0455 Fax
eric@shed-dep.com



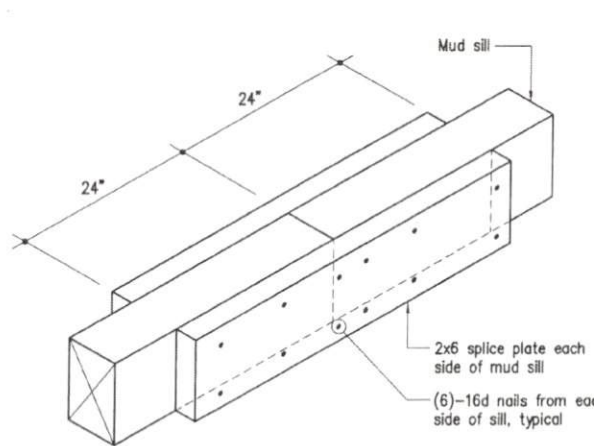
(A) Floor Joist to Outer Mud Sill Connection Detail

(SILL_SJ_Conn1) Scale: 1 1/2"=1'-0"



(B) Floor Joist to Inner Mud Sill Connection Detail

(SILL_SJ_Conn2) Scale: 1 1/2"=1'-0"



(C) Mud Sill Splice Detail

(SILL_Splice) Scale: 1 1/2"=1'-0"

14' x 14' to 28' x 9' Storage Shed

GARPE Job # 19009

Drawn	GAR
Checked	GAR
Date	24APR19
Rev	
Rev	

D2
6 of 6