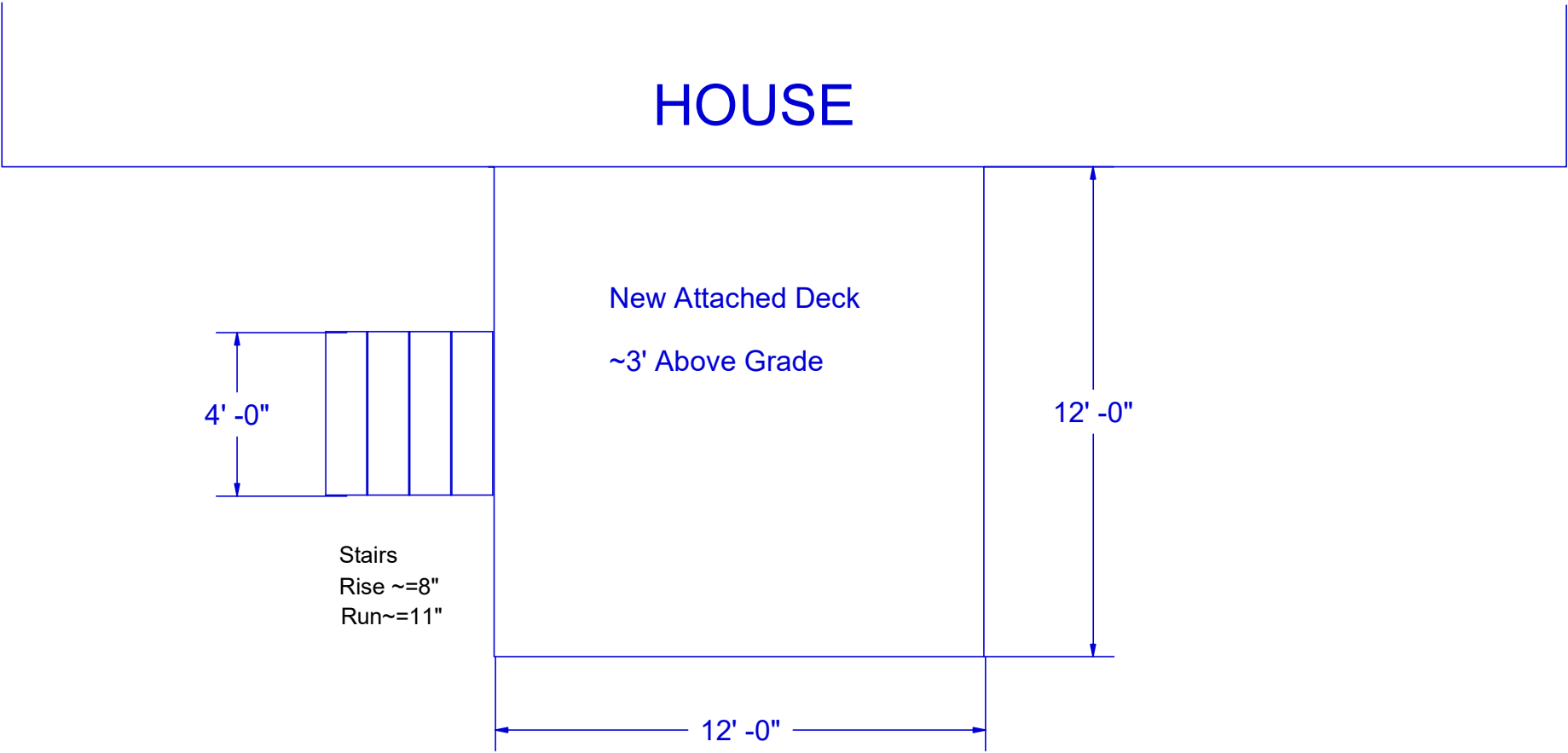
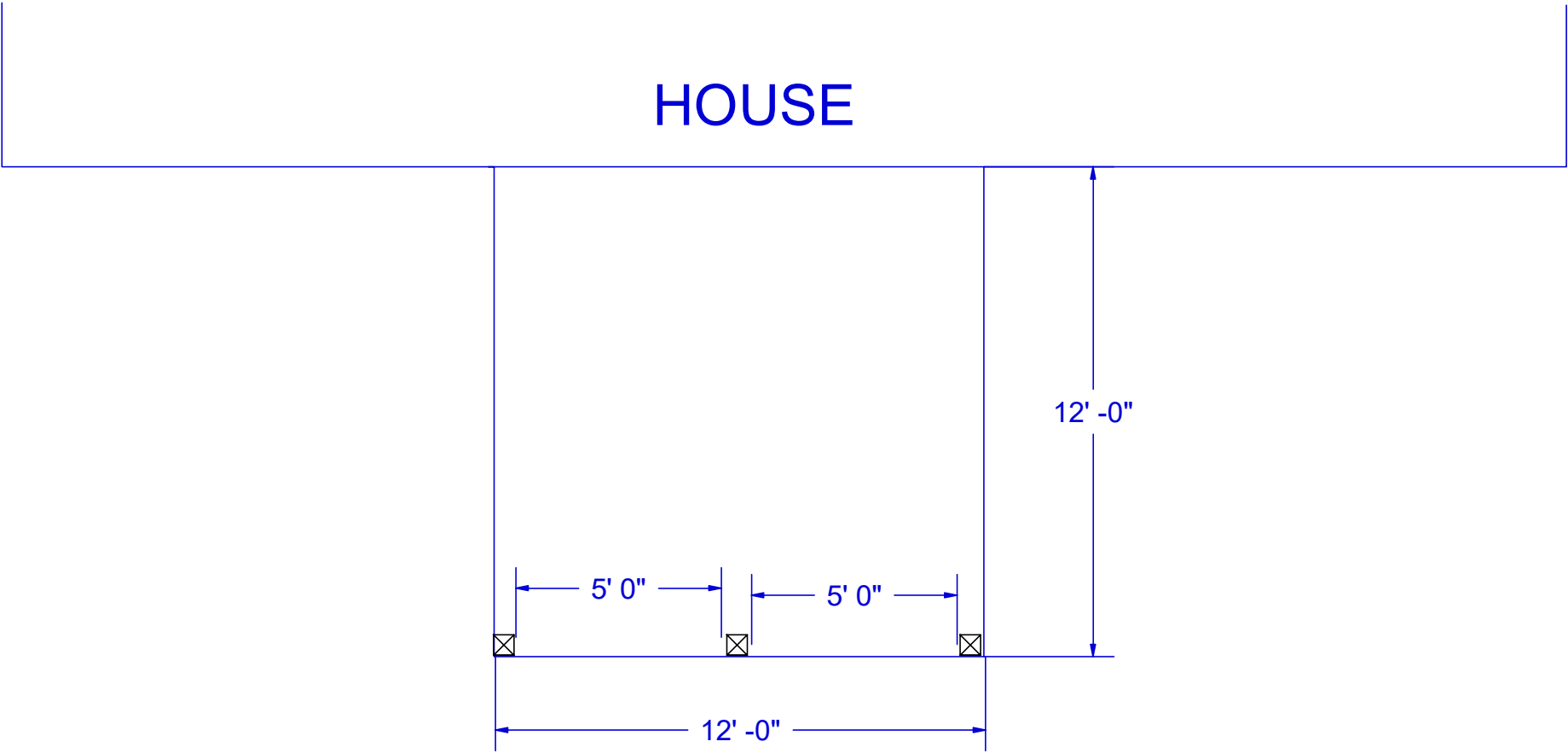


HOUSE



PLAN VIEW

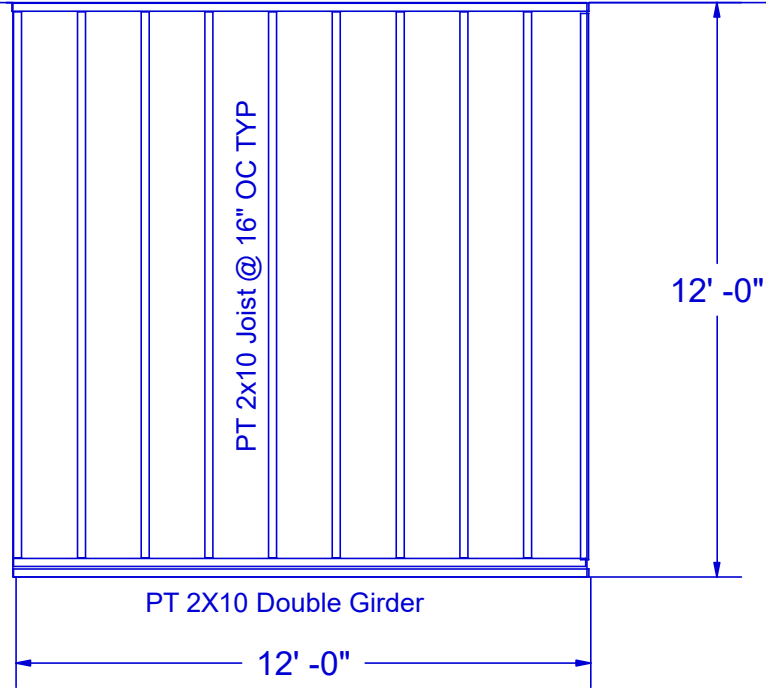
HOUSE



FOOTER LOCATION

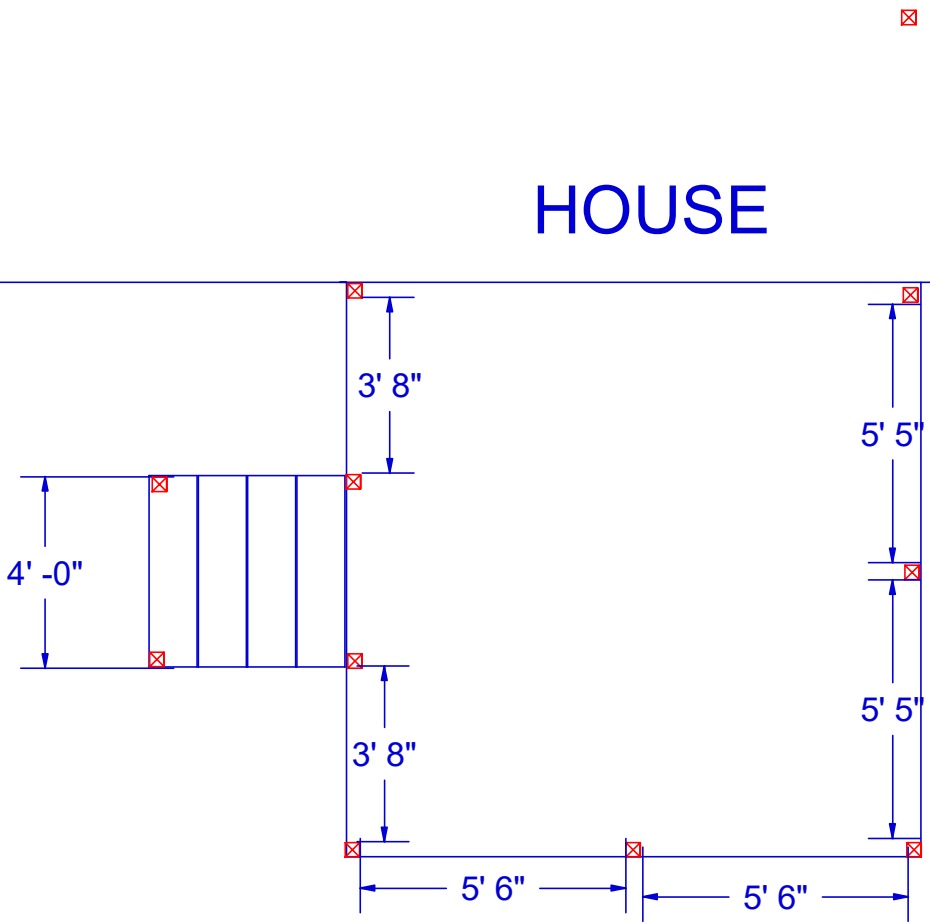
HOUSE

PT 2x10 Attached Band
See Attachment Detail



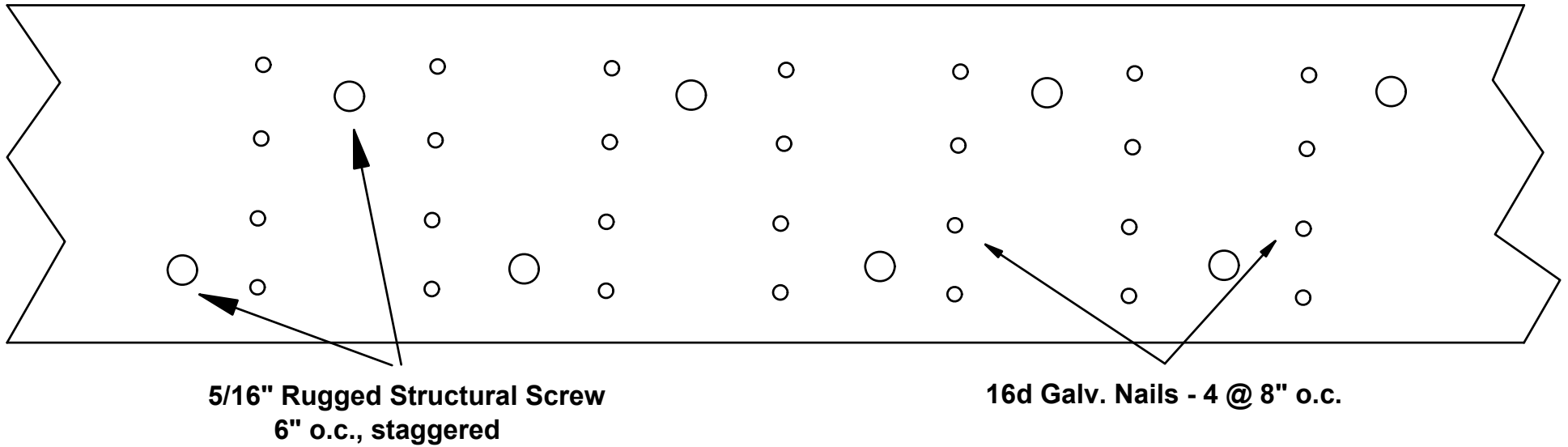
JOIST & GIRDER LAYOUT

HOUSE



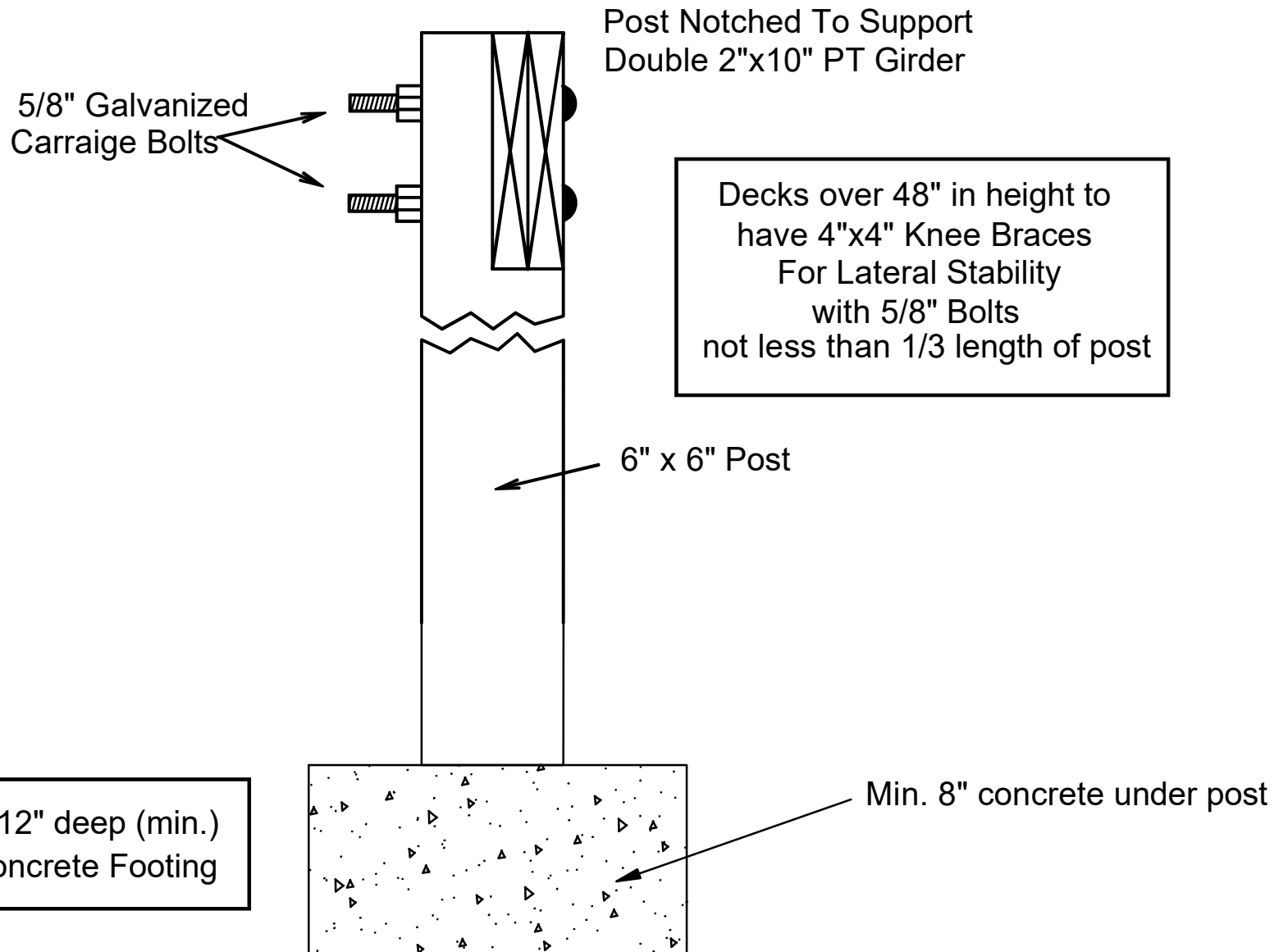
POST LOCATION

Attached PT Band

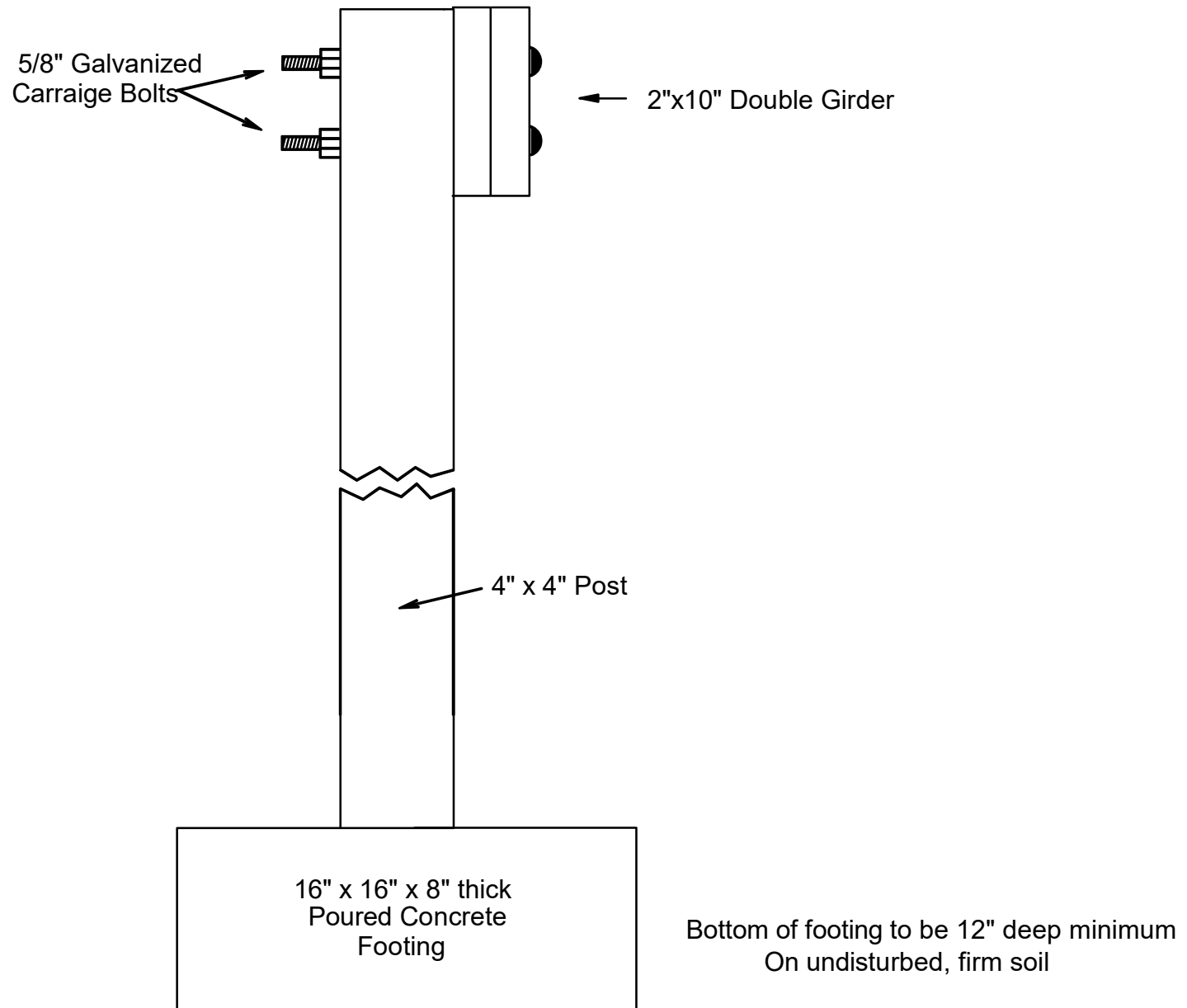


Note: Siding Removed And PVC Flashing Installed

BAND DETAIL

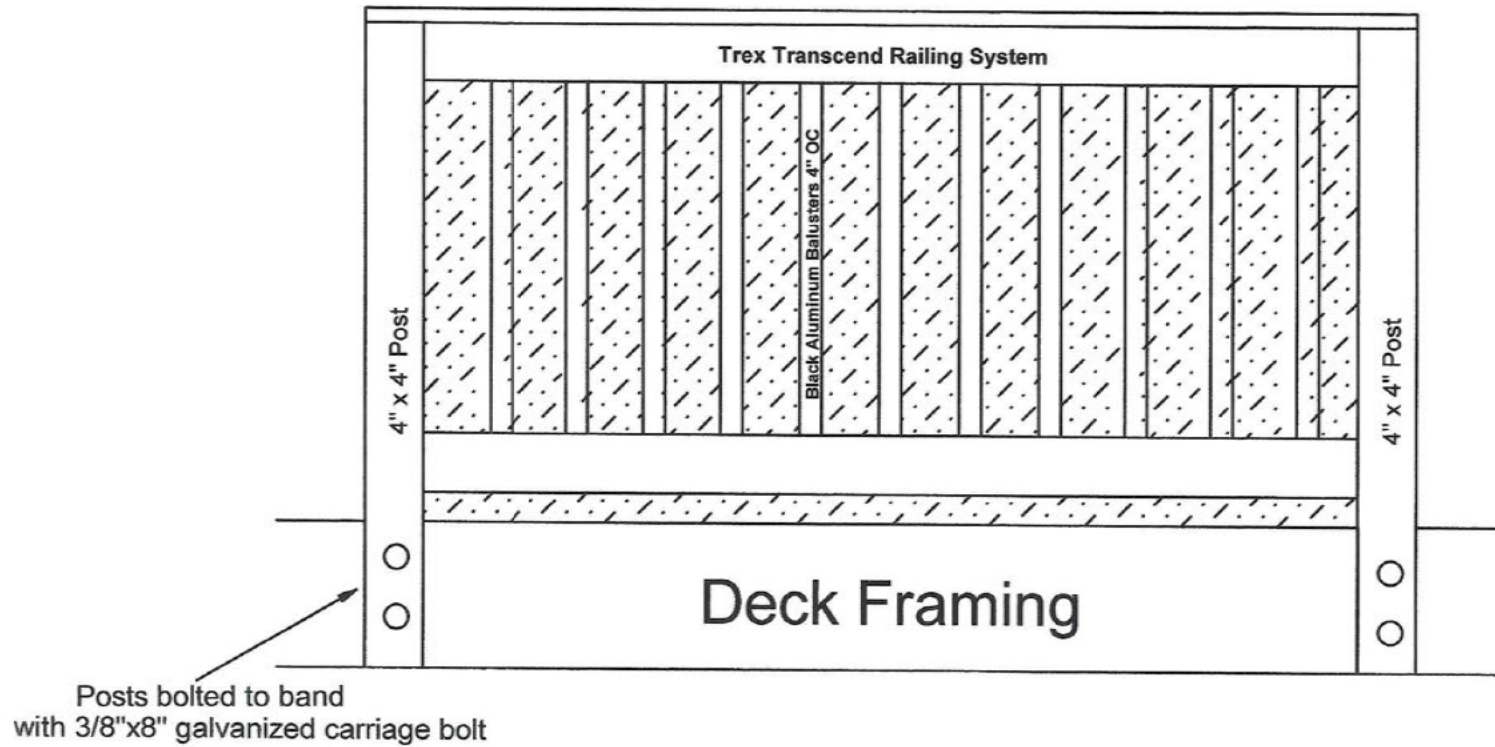


FOOTER DETAIL



STAIR POST 4X4 DETAIL

Min. Railing Height - 36"
Max. Span Between Posts - 6' - 0"



Railing Detail