

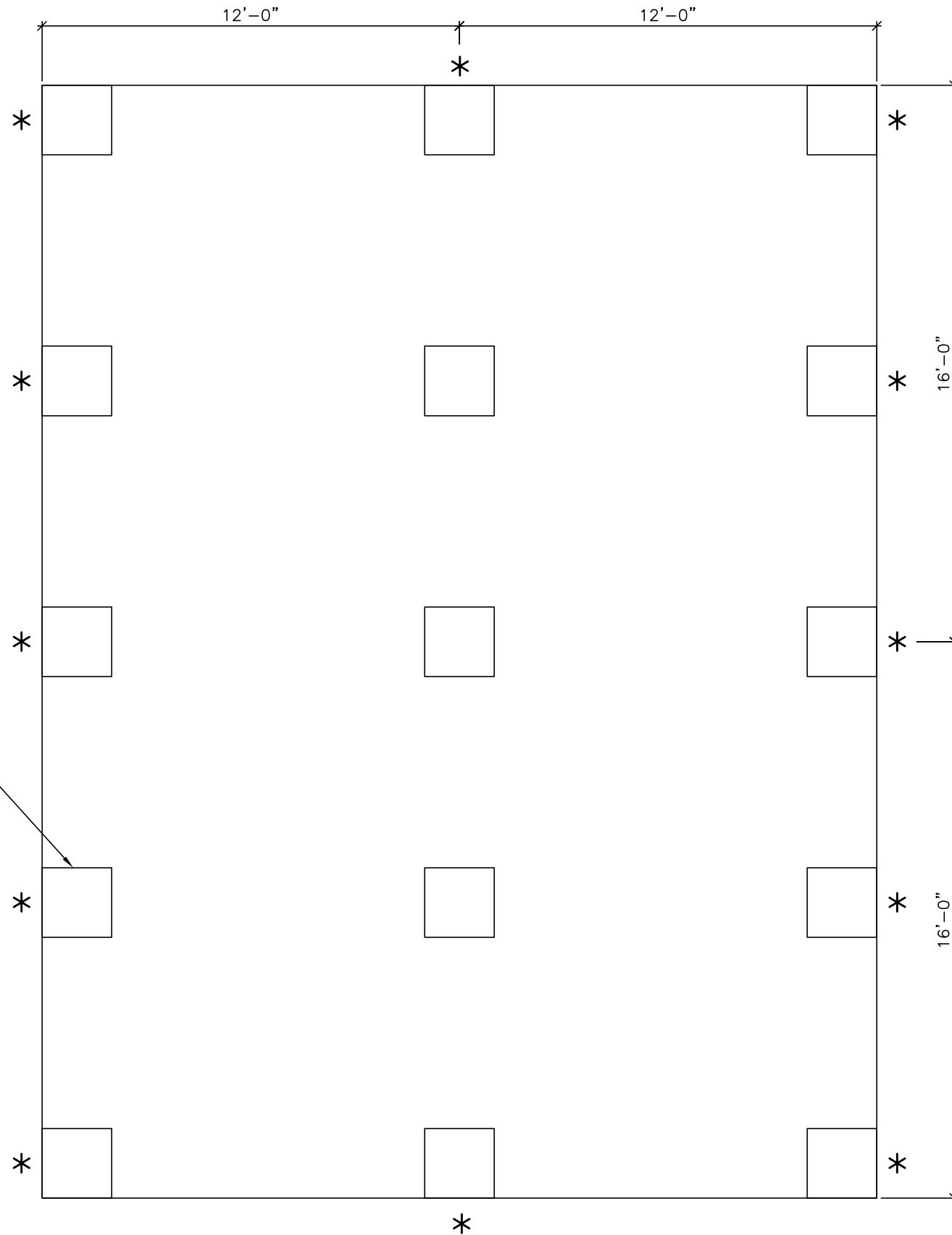
SCOPE OF WORK:
PIER AND TIEDOWNS FOR A MODULAR SCHOOL HUT THAT IS BEING RELOCATED.

- DESIGN SOIL BEARING PRESSURE IS 2000psf.
- TIEDOWNS: VERTICAL GALVANIZED AUGER ANCHOR (50"x3/4" ROD WITH 4" & 6" HELIX) AND 1-1/4" WIDE x 0.035" THICK MINIMUM GALVANIZED STRAP.
- INSTALL AUGER ANCHORS FULL DEPTH AND CONNECT TO BUILDING PER MANUFACTURES RECOMENDATIONS AND INDUSTRY STANDARDS.

NOTES	2
NO SCALE	S1.0

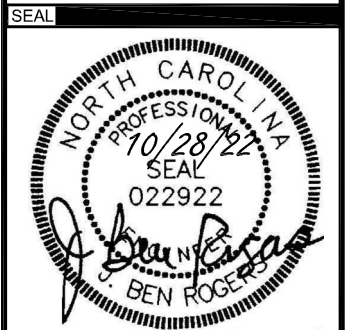


2'-0x2'-0 C.M.U. PIERS (2'-8" MAX. HEIGHT) WITH 4" SOLID SINGLE PIECE C.M.U. OR 6"x24"x24" POURED CONCRETE FOOTING-TYPICAL.



* INDICATES TIEDOWN ANCHOR APPROXIMATE LOCATIONS

BUILDING ANCHOR PLAN	1
1/4" = 1'-0"	S1.0



PROJECT NAME
MODULAR BUILDING ANCHORS
 AT
154 PRICE LANE DUNN, NC

SHEET TITLE
NEW DOOR SUPPORT BEAM SECTIONS AND NOTES

PROJECT TEAM
 DESIGNED BY:
B.R.
 DRAWN BY:
B.R.
 CHECKED BY:
B.R.

ISSUE DATE	SHEET NUMBER
10-28-22	1
PROJECT NO.	S1.0
22-126	