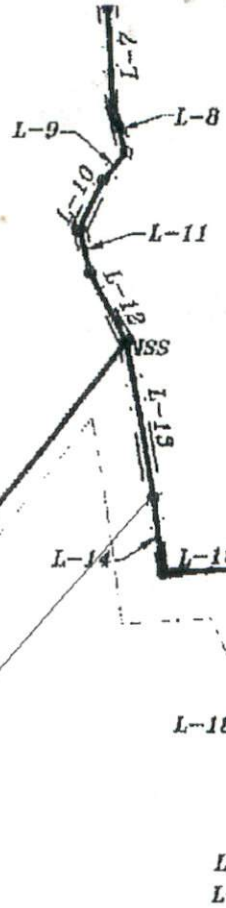


S.R. 1514 - Main
60' R/W(Pub.)

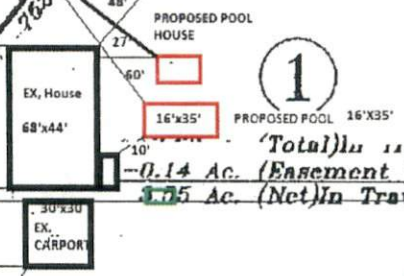
2

63.42 Ac. (Residual) In Traverse
-3.69 Ac. (Lot 1) In Traverse
59.73 Ac. (Total) In Traverse
-0.22 Ac. (Easement "A")
59.51 Ac. (Net) In Traverse

Note:
Course
center
L-1 th
center



N 38°58'01"E 775.62' (Total)
762.14'



1

(Total) In Traverse
-0.14 Ac. (Easement "B")
5.75 Ac. (Net) In Traverse

S 38°58'01"W 561.32' (Total)
469.23'

Easement "A"

00°01'E 775.15' (Total) ISS
01°W 769.57' (Total) ISS
Utility Easement
Pg. 808
101-1120

New Additional
20' Access & Utility Easement "B"
0.14-Ac.

Existing 30' Access & Utility Easement
D. B. 1547, Pg. 240
Map Number 2001-1122

Victor Johnson
D. B. 1547, Pg. 240
Map Number 2001-1122

Existing 30' Easement
D. B. 350, Pg. 263

Evelyn S. Upchurch
D. B. 2428, Pg. 220
Map Number 2007-765

Easement exists
set of property

I (we) h
property
jurisdiction
adopt th
minimum
have no
legal or
across
shown a

12
Date

C
Eve
398