

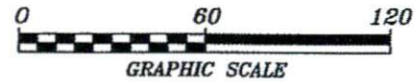
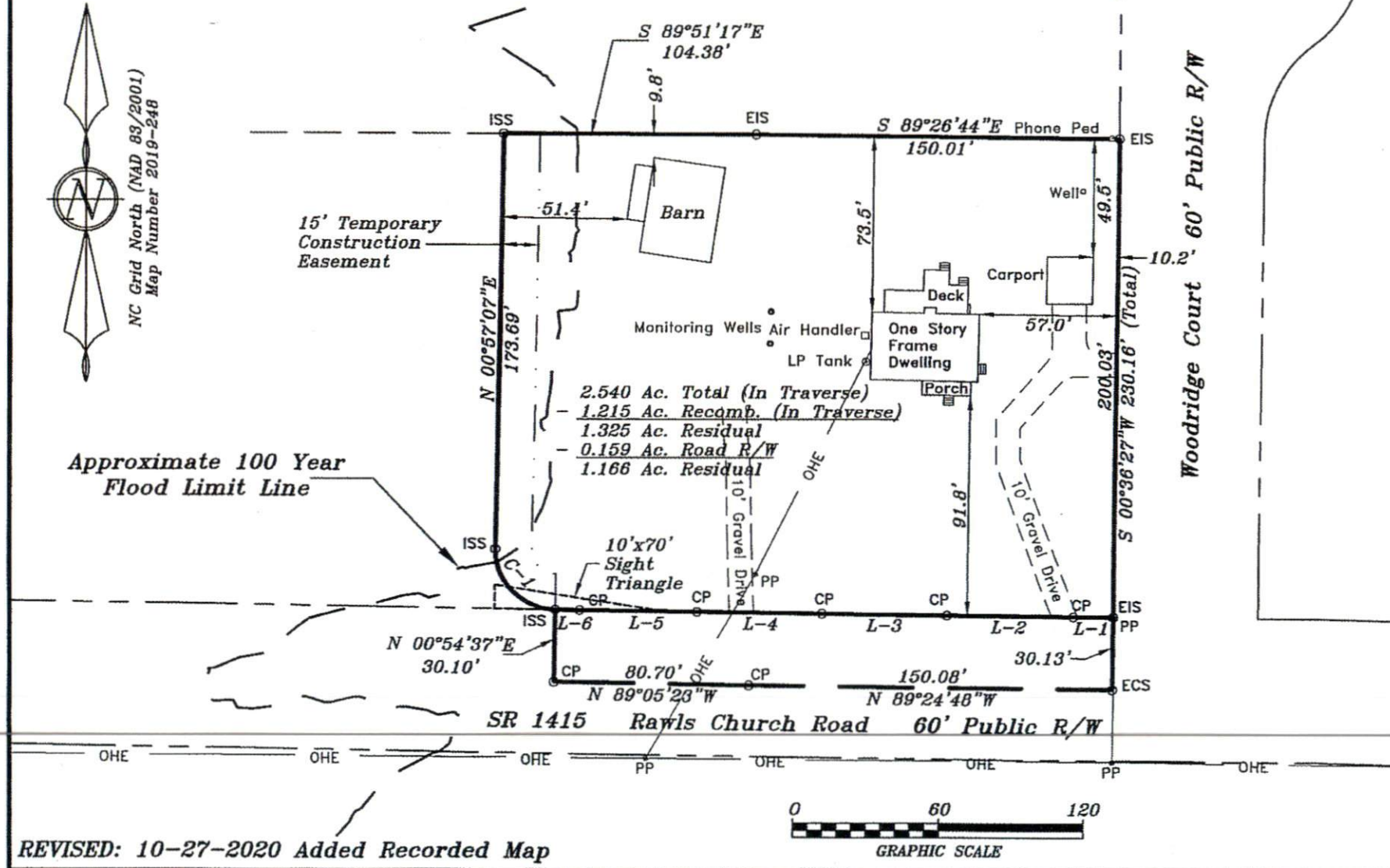
Course	Bearing	Distance
L-1	N 89°40'26" W	16.32'
L-2	N 89°19'29" W	52.50'
L-3	N 89°18'14" W	51.30'
L-4	N 89°17'44" W	51.79'
L-5	N 89°15'08" W	48.63'
L-6	N 88°58'58" W	10.07'

Curve	Radius	Length	Delta	Chord	Chord Bear.
C-1	25.00'	39.24'	89°56'05"	35.34'	N 44°00'56" W

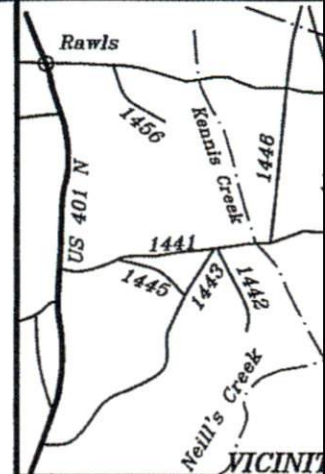
Anthony J. Mennella
Deed Book 1074, Page 240
Plat Cabinet "E", Slide 111C



NC Grid North (NAD 83/2001)
Map Number 2019-248



REVISED: 10-27-2020 Added Recorded Map



2200 Rawls
Angier,
Map Number
PIN: 0674-

Owned by, Surveyor
**Irving M.
Eileen G.**

Black River Twp.
Scale: 1" = 60'

Surveyed &
STANCIL &
Professional Land
P.O. Box 730, A
919-639-2133
stancilsurve



NOT FOR RE...