



**STRUCTURAL DESIGN
ENCLOSED BUILDING**

**MAXIMUM 30'-0" WIDE X 15'-0" EAVE HEIGHT-
BOX EAVE AND BOW FRAME**

**31 December 2018
Revision 1
M&A Project No. 18196S/18362S**

Prepared for:

**Shed Central
3648 W. US Highway 421
Wilkesboro, NC 28697**

Prepared by:

**Moore and Associates Engineering
and Consulting, Inc.**

**1009 East Avenue
North Augusta, SC 29841**

**401 S. Main St., Suite 200
Mt. Airy, NC 27030**





**MOORE AND ASSOCIATES
ENGINEERING AND CONSULTING, INC.**

DRAWN BY: AM

CHECKED BY: VSM

PROJECT MGR: VSM

CLIENT: SHED CENTRAL

SHED CENTRAL
3648 WEST U.S. HWY 421
WILKESBORO, NC 28697
30'-0"x15'-0" ENCLOSED STRUCTURE

DATE: 12-31-18

SCALE: NTS

**JOB NO: 18196S/
18362S**

SHT. 1

DWG. NO: SK-3

REV: 1

THIS DOCUMENT IS THE PROPERTY OF MOORE AND ASSOCIATES ENGINEERING AND CONSULTING. THE UNAUTHORIZED REPRODUCTION, COPYING, OR OTHERWISE USE OF THIS DOCUMENT IS STRICTLY PROHIBITED AND ANY INFRINGEMENT THEREUPON MAY BE SUBJECT TO LEGAL ACTION.

DRAWING INDEX

SHEET 1	PE SEAL COVER SHEET
SHEET 2	DRAWING INDEX
SHEET 3	INSTALLATION NOTES AND SPECIFICATIONS
SHEET 3A	TYPICAL SIDE AND END ELEVATIONS (BOX EAVE STRUCTURE)
SHEET 3B	TYPICAL SIDE AND END ELEVATIONS (BOW EAVE STRUCTURE)
SHEET 4	TYPICAL RAFTER/COLUMN FRAME AND SIDE FRAMING SECTION
SHEET 4A	TYPICAL RAFTER/COLUMN FRAME AND SIDE FRAMING SECTION
SHEET 4B	TYPICAL RAFTER/COLUMN FRAME AND SIDE FRAMING SECTION
SHEET 4C	TYPICAL RAFTER/COLUMN FRAME AND SIDE FRAMING SECTION
SHEET 5	COLUMN CONNECTION DETAILS (BOX EAVE STRUCTURE)
SHEET 6	COLUMN CONNECTION DETAILS (BOW EAVE STRUCTURE)
SHEET 7	BASE RAIL ANCHORAGE OPTIONS
SHEET 7A	BASE RAIL ANCHORAGE OPTIONS
SHEET 8	TYPICAL END WALL AND SIDE WALL FRAMING SECTIONS
SHEET 8A	TYPICAL END WALL AND SIDE WALL FRAMING SECTIONS
SHEET 9	CONNECTION DETAILS
SHEET 10	CONNECTION DETAILS
SHEET 11	LEAN-TO OPTIONS
SHEET 11A	LEAN-TO OPTIONS
SHEET 12	VERTICAL ROOF/SIDING OPTION END AND SIDE ELEVATION AND SECTION
SHEET 13	ADDITIONAL BASE RAIL ANCHORAGE OPTION

MOORE AND ASSOCIATES ENGINEERING AND CONSULTING, INC.	DRAWN BY: AM	SHED CENTRAL 3648 W. US HIGHWAY 421 WILKESBORO, NC 28697 30'-0" x 15'-0" ENCLOSED STRUCTURE		
	CHECKED BY: WSM	PROJECT MGR: WSM	DATE: 12-31-18	SCALE: NTS
THIS DOCUMENT IS THE PROPERTY OF MOORE AND ASSOCIATES ENGINEERING AND CONSULTING. THE UNAUTHORIZED REPRODUCTION, COPYING, OR OTHERWISE USE OF THIS DOCUMENT IS STRICTLY PROHIBITED AND ANY INFRINGEMENT THEREUPON MAY BE SUBJECT TO LEGAL ACTION.	CLIENT: SHED CENTRAL	SHT. 2	DWG. NO SK-3	JOB NO 18196S/ 18362S REV: 1

INSTALLATION NOTES AND SPECIFICATIONS

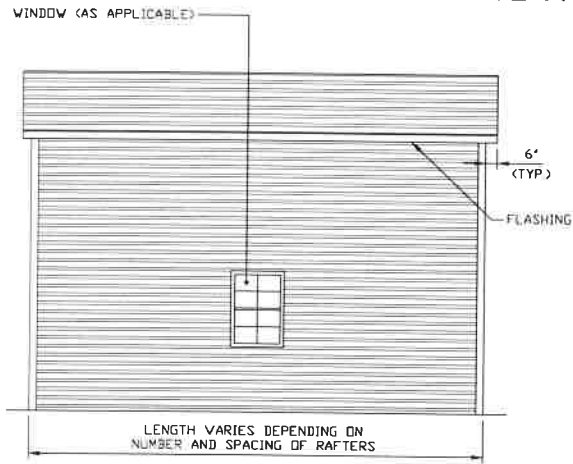
1. DESIGN IS FOR MAXIMUM 30'-0" WIDE x 15'-0" EAVE HEIGHT ENCLOSED STRUCTURES.
2. DESIGN WAS DONE IN ACCORDANCE WITH THE 2018 NORTH CAROLINA BUILDING CODE (2015 INTERNATIONAL BUILDING CODE).
3. DESIGN LOADS ARE AS FOLLOWS:
 - A) DEAD LOAD = 1.5 PSF
 - B) LIVE LOAD = 12 PSF
 - C) GROUND SNOW LOAD = 25 PSF (UNBALANCED SNOW LOADS DUE TO DRIFTING HAVE NOT BEEN EVALUATED).
4. 3-SECOND GUST ULTIMATE WIND SPEED (V_{ULT}) 105 TO 145 MPH (NOMINAL WIND SPEED 82 TO 112 MPH).
5. MAXIMUM RAFTER/COLUMN AND END COLUMN SPACING = 5'-0" (UNLESS NOTED OTHERWISE).
6. SIDEWALL COLUMNS AND ENDWALL COLUMNS ARE SIMILAR IN SIZE, UNLESS NOTED OTHERWISE.
7. RISK CATEGORY I.
8. WIND EXPOSURE CATEGORY B.
9. SPECIFICATIONS APPLICABLE TO 29 GAUGE METAL PANELS FASTENED DIRECTLY TO 2 1/2" x 2 1/2" - 14 GAUGE TUBE STEEL (TS) FRAMING MEMBERS (UNLESS NOTED OTHERWISE).
11. AVERAGE FASTENER SPACING ON-CENTERS ALONG RAFTERS OR HAT CHANNELS, AND COLUMNS (INTERIOR OR END) = 6 INCHES.
12. FASTENERS CONSIST OF #12-14x3/4" SELF-DRILLING FASTENER (SDF), USE CONTROL SEAL WASHER WITH EXTERIOR FASTENERS. SPECIFICATIONS APPLICABLE ONLY FOR MEAN ROOF HEIGHT OF 20 FEET OR LESS, AND ROOF SLOPES OF 14° (3:12 PITCH) OR LESS SPACING REQUIREMENTS FOR OTHER ROOF HEIGHTS AND/OR SLOPES MAY VARY.
13. ANCHORS SHALL BE INSTALLED THROUGH BASE RAIL WITHIN 6' OF EACH COLUMN.
14. STANDARD GROUND ANCHORS CONSIST OF #4 REBAR W/ WELDED NUT x 36" LONG IN SUITABLE SOIL CONDITIONS. OPTIONAL ANCHORAGE MAY BE USED IN SUITABLE SOILS AND MUST BE USED IN UNSUITABLE SOILS AS NOTED.
15. WIND FORCES GOVERN OVER SEISMIC FORCES. SEISMIC PARAMETERS ANALYZED ARE:

SOIL SITE CLASS = D
 RISK CATEGORY I/II/III

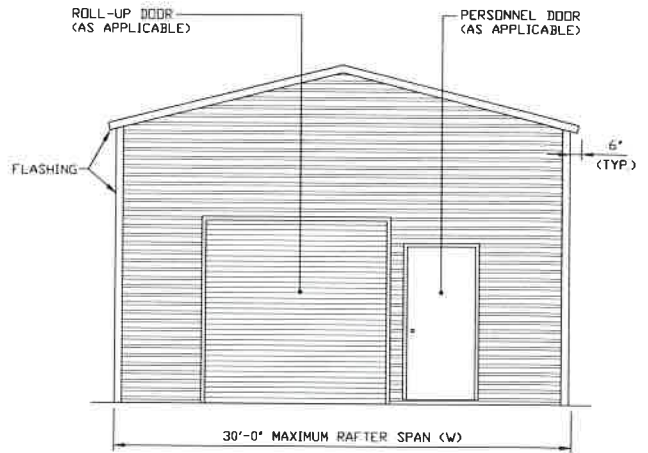
$R = 3.25$ $I_e = 1.0$
 $S_{DS} = 2.039$ $V = C_s W$
 $S_{DI} = 1.258$

MOORE AND ASSOCIATES ENGINEERING AND CONSULTING, INC.	DRAWN BY: AM	SHED CENTRAL 3648 W. US HIGHWAY 421 WILKESBORO, NC 28697 30'-0" x 15'-0" ENCLOSED STRUCTURE		
	CHECKED BY: VSM			
THIS DOCUMENT IS THE PROPERTY OF MOORE AND ASSOCIATES ENGINEERING AND CONSULTING. THE UNAUTHORIZED REPRODUCTION, COPYING, OR OTHERWISE USE OF THIS DOCUMENT IS STRICTLY PROHIBITED AND ANY INFRINGEMENT THEREUPON MAY BE SUBJECT TO LEGAL ACTION.	PROJECT MGR: VSM	DATE: 12-31-18	SCALE: NTS	JOB NO: 18196S/ 18362S
	CLIENT: SHED CENTRAL	SHT. 3	DWG. NO SK-3	REV: 1

BOX EAVE FRAME RAFTER STRUCTURE



TYPICAL SIDE ELEVATION
SCALE: NTS



TYPICAL END ELEVATION
SCALE: NTS

**MOORE AND ASSOCIATES
ENGINEERING AND CONSULTING, INC.**

DRAWN BY: AM

CHECKED BY: WSM

PROJECT MGR: WSM

CLIENT: SHED CENTRAL

SHED CENTRAL
3648 W. US HIGHWAY 421
WILKESBORO, NC 28697

30'-0" x 15'-0" ENCLOSED STRUCTURE

DATE: 12-31-18

SCALE: NTS

SHT. 3A

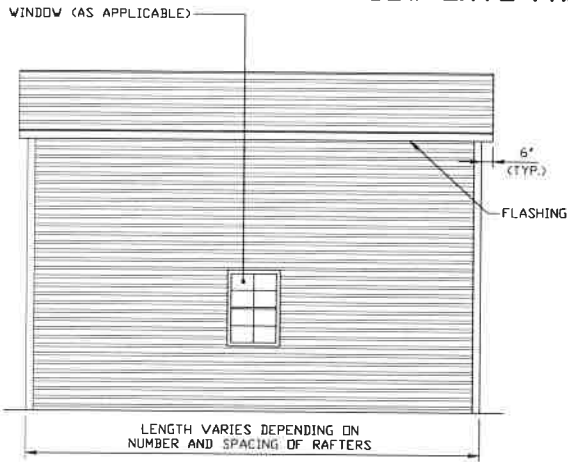
DWG. NO SK-3

**JOB NO 18196S/
18362S**

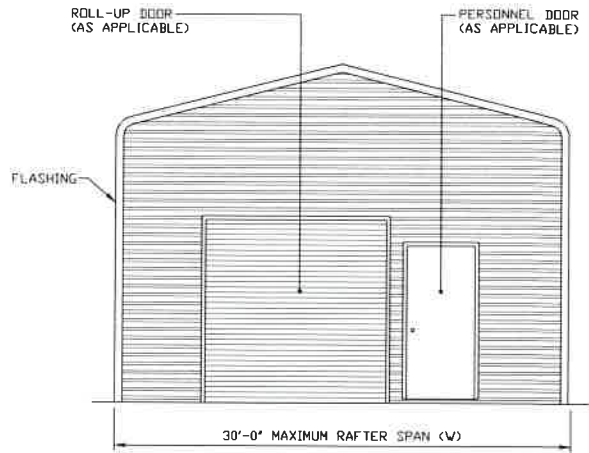
REV: 1

THIS DOCUMENT IS THE PROPERTY OF MOORE AND ASSOCIATES ENGINEERING AND CONSULTING. THE UNAUTHORIZED REPRODUCTION, COPYING, OR OTHERWISE USE OF THIS DOCUMENT IS STRICTLY PROHIBITED AND ANY INFRINGEMENT THEREUPON MAY BE SUBJECT TO LEGAL ACTION.

BOW EAVE FRAME RAFTER STRUCTURE



TYPICAL SIDE ELEVATION
SCALE: NTS



TYPICAL END ELEVATION
SCALE: NTS

**MOORE AND ASSOCIATES
ENGINEERING AND CONSULTING, INC.**

DRAWN BY: AM

CHECKED BY: WSM

PROJECT MGR: WSM

CLIENT: SHED CENTRAL

SHED CENTRAL
3648 W. US HIGHWAY 421
WILKESBORO, NC 28697
30'-0" x 15'-0" ENCLOSED STRUCTURE

DATE: 12-31-18

SHT. 3B

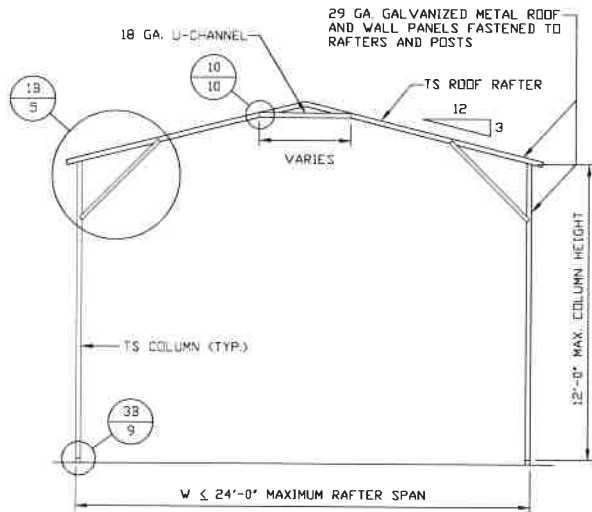
SCALE: NTS

DWG. NO: SK-3

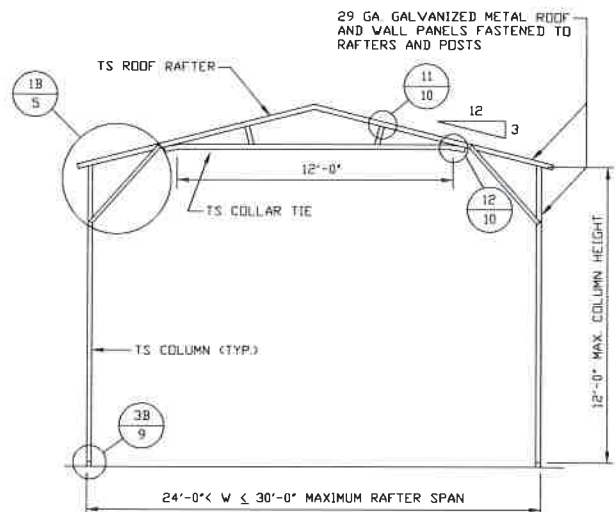
**JOB NO: 18196S/
18362S**

REV: 1

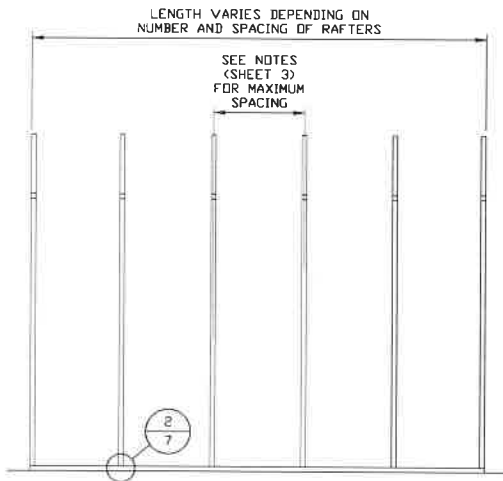
THIS DOCUMENT IS THE PROPERTY OF MOORE AND ASSOCIATES ENGINEERING AND CONSULTING. THE UNAUTHORIZED REPRODUCTION, COPYING, OR OTHERWISE USE OF THIS DOCUMENT IS STRICTLY PROHIBITED AND ANY INFRINGEMENT THEREUPON MAY BE SUBJECT TO LEGAL ACTION.



TYPICAL RAFTER/COLUMN FRAME SECTION
SCALE: NTS



TYPICAL RAFTER/COLUMN FRAME SECTION
SCALE: NTS



TYPICAL RAFTER/COLUMN SIDE FRAMING SECTION
SCALE: NTS

**MOORE AND ASSOCIATES
ENGINEERING AND CONSULTING, INC.**

DRAWN BY: AM

CHECKED BY: VSM

PROJECT MGR: VSM

CLIENT: SHED CENTRAL

SHED CENTRAL
3648 W. US HIGHWAY 421
WILKESBORO, NC 28697
30'-0" x 15'-0" ENCLOSED STRUCTURE

DATE: 12-31-18

SHT. 4

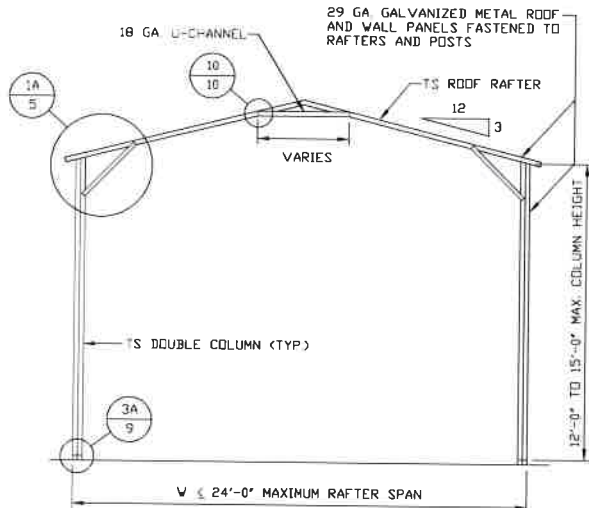
SCALE: NTS

DWG. NO: SK-3

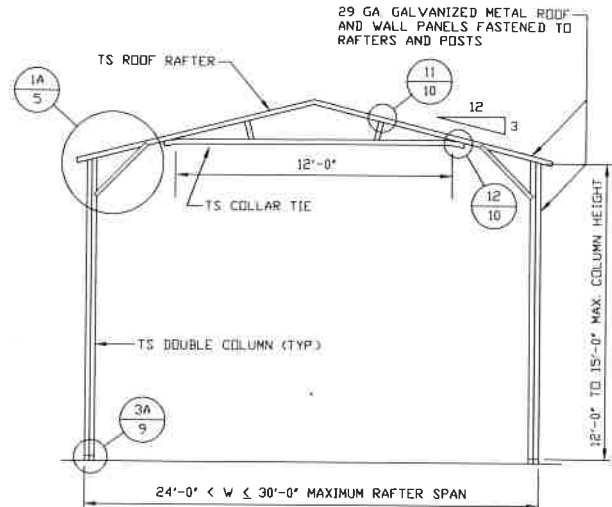
**JOB NO: 18196S/
18362S**

REV: 1

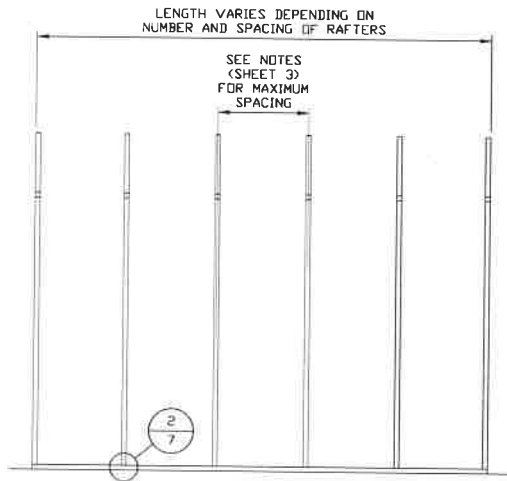
THIS DOCUMENT IS THE PROPERTY OF MOORE AND ASSOCIATES ENGINEERING AND CONSULTING. THE UNAUTHORIZED REPRODUCTION, COPYING, OR OTHERWISE USE OF THIS DOCUMENT IS STRICTLY PROHIBITED AND ANY INFRINGEMENT THEREUPON MAY BE SUBJECT TO LEGAL ACTION.



TYPICAL RAFTER/COLUMN FRAME SECTION
SCALE: NTS



TYPICAL RAFTER/COLUMN FRAME SECTION
SCALE: NTS



TYPICAL RAFTER/COLUMN SIDE FRAMING SECTION
SCALE: NTS

**MOORE AND ASSOCIATES
ENGINEERING AND CONSULTING, INC.**

DRAWN BY: AM

CHECKED BY: WSM

PROJECT MGR: WSM

CLIENT: SHED CENTRAL

SHED CENTRAL
3648 W. US HIGHWAY 421
WILKESBORO, NC 28697
30'-0" x 15'-0" ENCLOSED STRUCTURE

DATE: 12-31-18

SHT. 4A

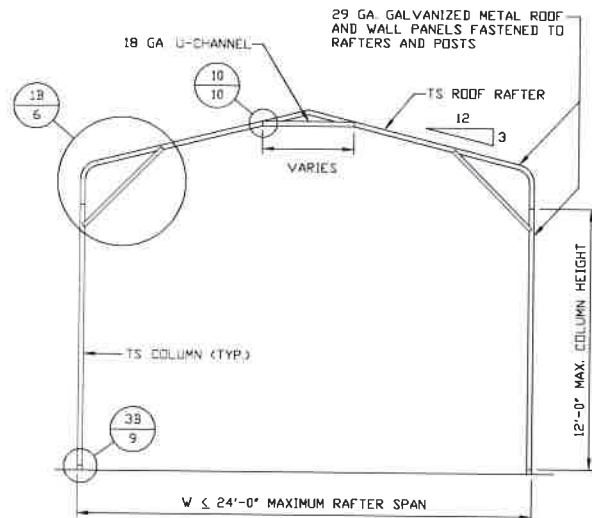
SCALE: NTS

DWG. NO: SK-3

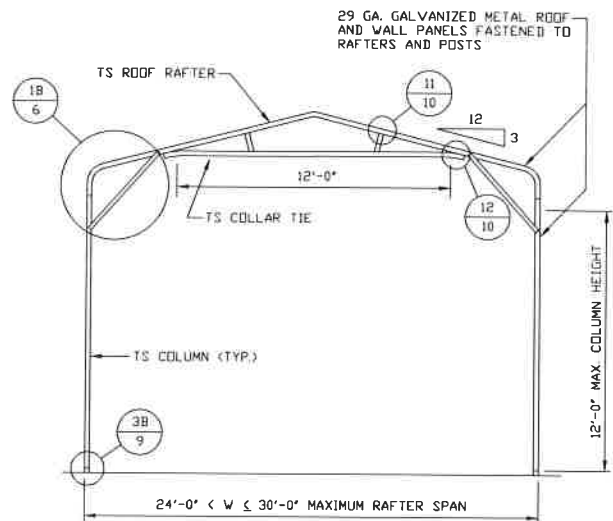
JOB NO: 18196S/
18362S

REV: 1

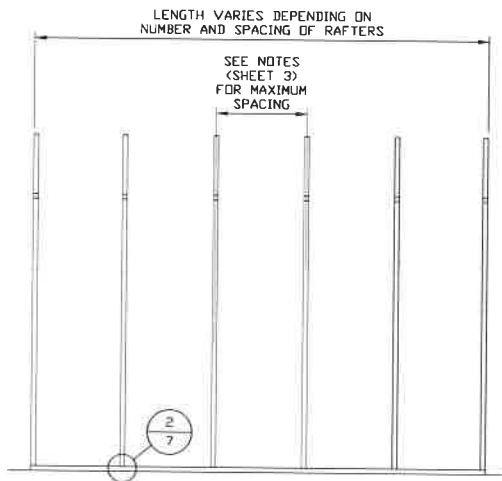
THIS DOCUMENT IS THE PROPERTY OF MOORE AND ASSOCIATES ENGINEERING AND CONSULTING. THE UNAUTHORIZED REPRODUCTION, COPYING, OR OTHERWISE USE OF THIS DOCUMENT IS STRICTLY PROHIBITED AND ANY INFRINGEMENT THEREUPON MAY BE SUBJECT TO LEGAL ACTION.



TYPICAL RAFTER/COLUMN FRAME SECTION
SCALE: NTS



TYPICAL RAFTER/COLUMN FRAME SECTION
SCALE: NTS



TYPICAL RAFTER/COLUMN SIDE FRAMING SECTION
SCALE: NTS

**MOORE AND ASSOCIATES
ENGINEERING AND CONSULTING, INC.**

DRAWN BY: AM

CHECKED BY: WSM

PROJECT MGR: WSM

CLIENT: SHED CENTRAL

SHED CENTRAL
3648 W. US HIGHWAY 421
WILKESBORO, NC 28697
30'-0" x 15'-0" ENCLOSED STRUCTURE

DATE: 12-31-18

SHT. 4B

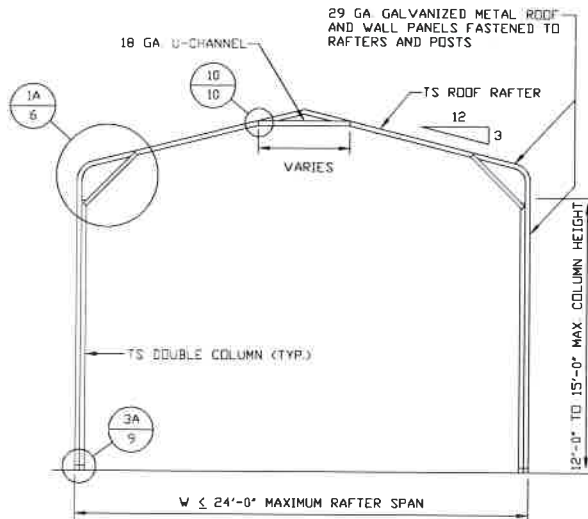
SCALE: NTS

DWG. NO: SK-3

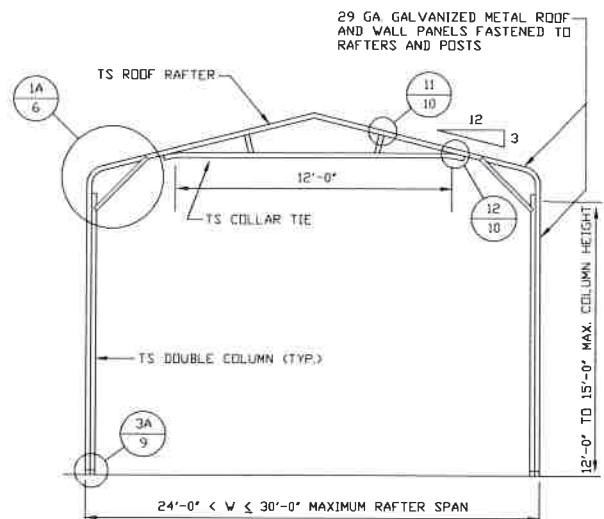
JOB NO: 18196S/
18362S

REV: 1

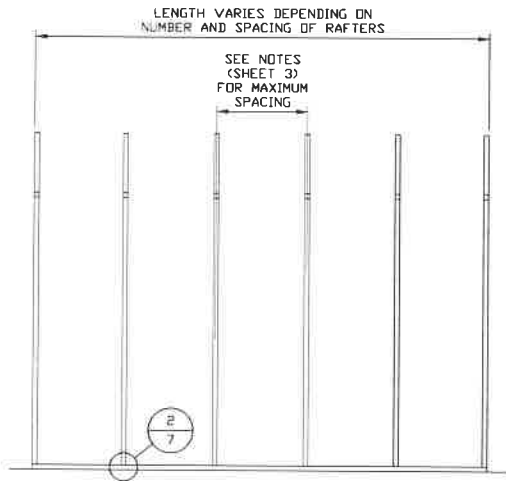
THIS DOCUMENT IS THE PROPERTY OF MOORE AND ASSOCIATES ENGINEERING AND CONSULTING. THE UNAUTHORIZED REPRODUCTION, COPYING, OR OTHERWISE USE OF THIS DOCUMENT IS STRICTLY PROHIBITED AND ANY INFRINGEMENT THEREUPON MAY BE SUBJECT TO LEGAL ACTION.



TYPICAL RAFTER/COLUMN FRAME SECTION
SCALE: NTS



TYPICAL RAFTER/COLUMN FRAME SECTION
SCALE: NTS



TYPICAL RAFTER/COLUMN SIDE FRAMING SECTION
SCALE: NTS

**MOORE AND ASSOCIATES
ENGINEERING AND CONSULTING, INC.**

DRAWN BY: AM

CHECKED BY: WSM

PROJECT MGR: WSM

CLIENT: SHED CENTRAL

SHED CENTRAL
3648 W. US HIGHWAY 421
WILKESBORO, NC 28697
30'-0" x 15'-0" ENCLOSED STRUCTURE

DATE: 12-31-18

SHT. 4C

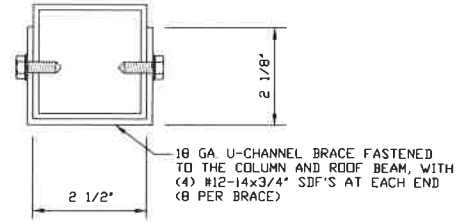
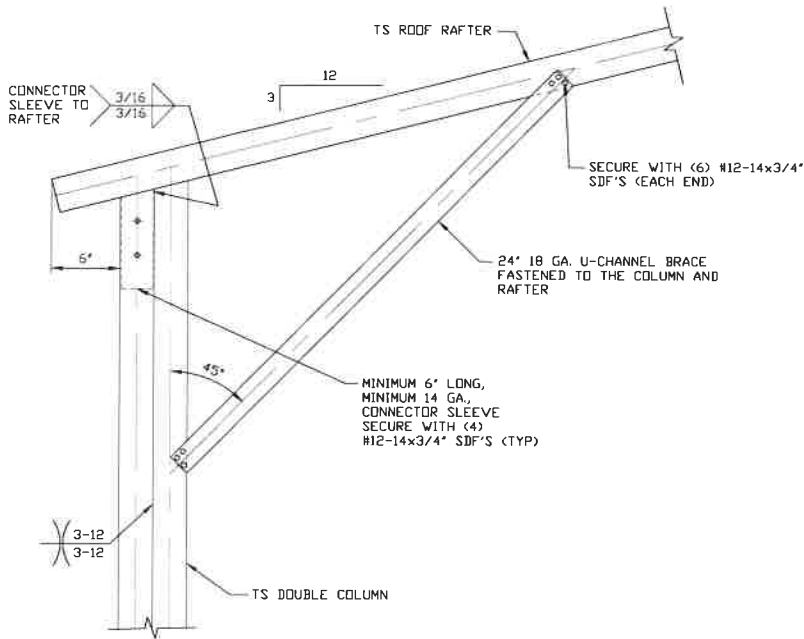
SCALE: NTS

DWG. NO: SK-3

**JOB NO: 18196S/
18362S**

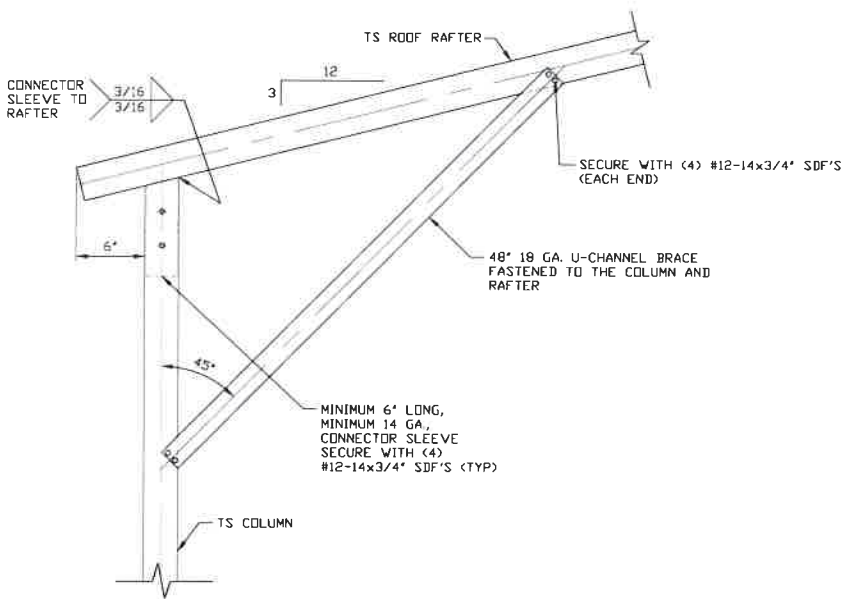
REV: 1

THIS DOCUMENT IS THE PROPERTY OF MOORE AND ASSOCIATES ENGINEERING AND CONSULTING. THE UNAUTHORIZED REPRODUCTION, COPYING, OR OTHERWISE USE OF THIS DOCUMENT IS STRICTLY PROHIBITED AND ANY INFRINGEMENT THEREUPON MAY BE SUBJECT TO LEGAL ACTION.



BRACE SECTION
SCALE: NTS

1A
BOX EAVE RAFTER/CORNER POST CONNECTION DETAIL
FOR HEIGHTS 12'-0" < TO <= 15'-0"
SCALE: NTS



1B
BOX EAVE RAFTER/CORNER POST CONNECTION DETAIL
FOR HEIGHTS <= 12'-0"
SCALE: NTS

**MOORE AND ASSOCIATES
ENGINEERING AND CONSULTING, INC.**

DRAWN BY: AM

CHECKED BY: WSM

PROJECT MGR: WSM

CLIENT: SHED CENTRAL

SHED CENTRAL
3648 W. US HIGHWAY 421
WILKESBORO, NC 28697
30'-0" x 15'-0" ENCLOSED STRUCTURE

DATE: 12-31-18

SHT. 5

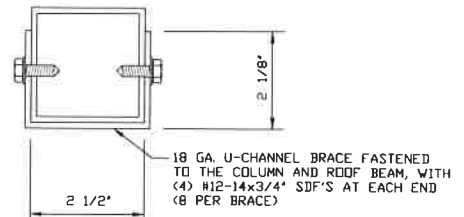
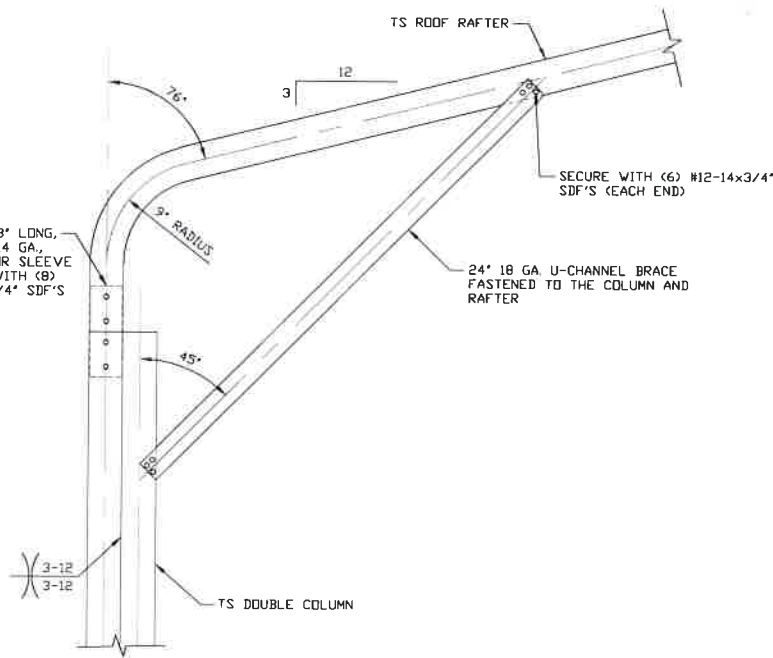
SCALE: NTS

DWG. NO: SK-3

**JOB NO: 18196S/
18362S**

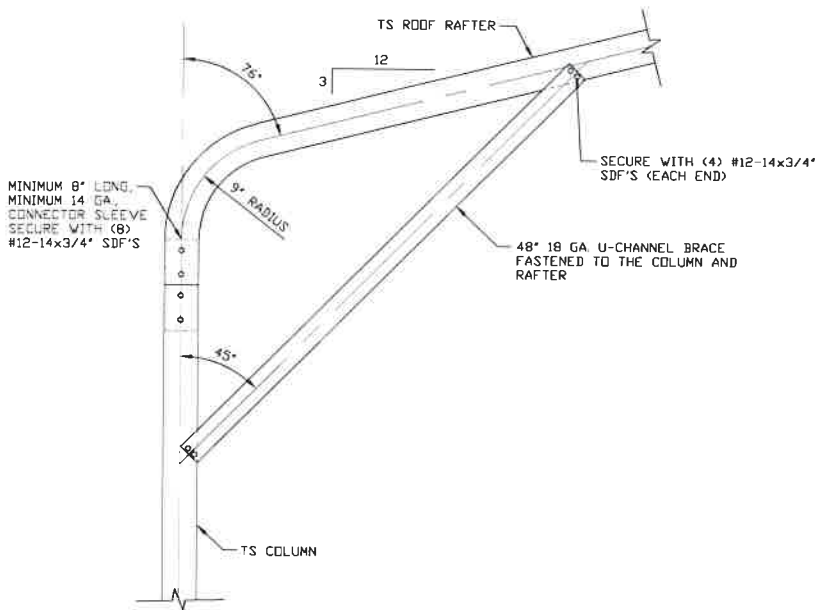
REV: 1

THIS DOCUMENT IS THE PROPERTY OF MOORE AND ASSOCIATES ENGINEERING AND CONSULTING. THE UNAUTHORIZED REPRODUCTION, COPYING, OR OTHERWISE USE OF THIS DOCUMENT IS STRICTLY PROHIBITED AND ANY INFRINGEMENT THEREUPON MAY BE SUBJECT TO LEGAL ACTION.



BRACE SECTION
SCALE: NTS

1A
BOX EAVE RAFTER/CORNER POST CONNECTION DETAIL
FOR HEIGHTS 12'-0" < TO <= 15'-0"
SCALE: NTS



1B
BOX EAVE RAFTER/CORNER POST CONNECTION DETAIL
FOR HEIGHTS <= 12'-0"
SCALE: NTS

MOORE AND ASSOCIATES
ENGINEERING AND CONSULTING, INC.

DRAWN BY: AM

CHECKED BY: WSM

PROJECT MGR: WSM

CLIENT: SHED CENTRAL

SHED CENTRAL
3648 W. US HIGHWAY 421
WILKESBORO, NC 28697
30'-0" x 15'-0" ENCLOSED STRUCTURE

DATE: 12-31-18

SHT. 6

SCALE: NTS

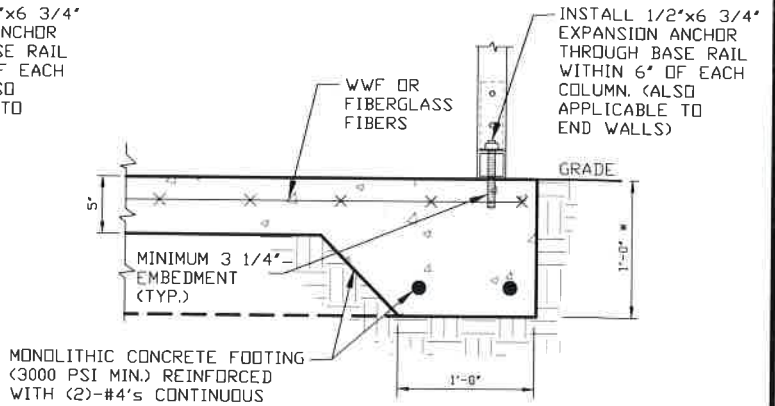
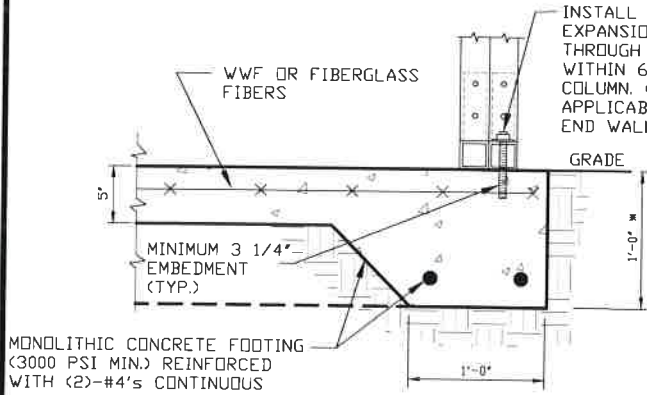
DWG. NO: SK-3

**JOB NO: 18196S/
18362S**

REV: 1

THIS DOCUMENT IS THE PROPERTY OF MOORE AND ASSOCIATES ENGINEERING AND CONSULTING. THE UNAUTHORIZED REPRODUCTION, COPYING, OR OTHERWISE USE OF THIS DOCUMENT IS STRICTLY PROHIBITED AND ANY INFRINGEMENT THEREUPON MAY BE SUBJECT TO LEGAL ACTION.

BASE RAIL ANCHORAGE OPTIONS



2A

CONCRETE MONOLITHIC SLAB BASE RAIL ANCHORAGE

SCALE: NTS
MINIMUM ANCHOR EDGE DISTANCE IS 4".
* COORDINATE WITH LOCAL CODES/ORD.

2B

CONCRETE SLAB BASE RAIL ANCHORAGE

SCALE: NTS
MINIMUM ANCHOR EDGE DISTANCE IS 4".
* COORDINATE WITH LOCAL CODES/ORD.

GENERAL NOTES

NOTE: CONCRETE MONOLITHIC SLAB DESIGN BASED ON MINIMUM SOIL BEARING CAPACITY OF 1,500 PSF.

CONCRETE:

CONCRETE SHALL HAVE A MINIMUM SPECIFIED COMPRESSIVE STRENGTH OF 3,000 PSI AT 28 DAYS.

COVER OVER REINFORCING STEEL:

FOR FOUNDATIONS, MINIMUM CONCRETE COVER OVER REINFORCING BARS SHALL BE PER ACI-318:

3" IN FOUNDATIONS WHERE THE CONCRETE IS CAST AGAINST AND PERMANENTLY IN CONTACT WITH THE EARTH OR EXPOSED TO THE EARTH OR WEATHER, AND 1 1/2" ELSEWHERE.

REINFORCING STEEL:

THE TURNDOWN REINFORCING STEEL SHALL BE ASTM A615 GRADE 60. THE SLAB REINFORCEMENT SHALL BE WELDED WIRE FABRIC MEETING ASTM A185 OR FIBERGLASS FIBER REINFORCEMENT.

REINFORCEMENT MAY BE BENT IN THE SHOP OR THE FIELD PROVIDED:

1. REINFORCEMENT IS BENT COLD.
2. THE DIAMETER OF THE BEND, MEASURED ON THE INSIDE OF THE BAR, IS NOT LESS THAN SIX-BAR DIAMETERS.
3. REINFORCEMENT PARTIALLY EMBEDDED IN CONCRETE SHALL NOT BE FIELD BENT.

HELIX ANCHOR NOTES:

1. FOR VERY DENSE AND/OR CEMENTED SANDS, COARSE GRAVEL AND COBBLES, CALICHE, PRELOADED SILTS AND CLAYS, USE MINIMUM (2) 4" HELICES WITH MINIMUM 30" EMBEDMENT OR SINGLE 6" HELIX WITH MINIMUM 50" EMBEDMENT
2. FOR CORAL USE MINIMUM (2) 4" HELICES WITH MINIMUM 30" EMBEDMENT OR SINGLE 6" HELIX WITH MINIMUM 50" EMBEDMENT.
3. FOR MEDIUM DENSE COARSE SANDS, SANDY GRAVELS, VERY STIFF SILTS, AND CLAYS USE MINIMUM (2) 4" HELICES WITH MINIMUM 30 INCH EMBEDMENT OR SINGLE 6" HELIX WITH MINIMUM 50" EMBEDMENT.
4. FOR LOOSE TO MEDIUM DENSE SANDS, FIRM TO STIFF CLAYS AND SILTS ALLUVIAL FILL, USE MINIMUM (2) 6" HELICES WITH MINIMUM 50" EMBEDMENT.
5. FOR VERY LOSE TO MEDIUM DENSE SANDS, FIRM TO STIFFER CLAYS AND SILTS, ALLUVIAL FILL, USE MINIMUM (2) 8" HELICES WITH MINIMUM 60" EMBEDMENT.

**MOORE AND ASSOCIATES
ENGINEERING AND CONSULTING, INC.**

DRAWN BY: AM

CHECKED BY: WSM

PROJECT MGR: WSM

CLIENT: SHED CENTRAL

SHED CENTRAL
3648 W. US HIGHWAY 421
WILKESBORO, NC 28697

30'-0" x 15'-0" ENCLOSED STRUCTURE

DATE: 12-31-18

SHT. 7

SCALE: NTS

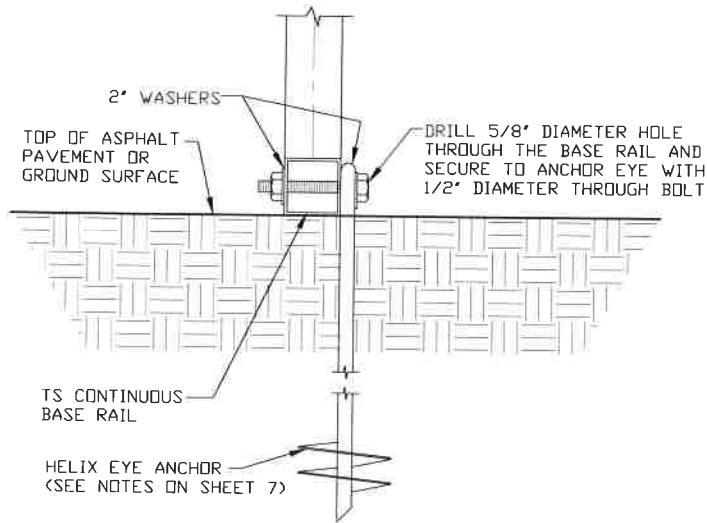
DWG. NO: SK-3

JOB NO: 18196S/
18362S

REV: 1

THIS DOCUMENT IS THE PROPERTY OF MOORE AND ASSOCIATES ENGINEERING AND CONSULTING. THE UNAUTHORIZED REPRODUCTION, COPYING, OR OTHERWISE USE OF THIS DOCUMENT IS STRICTLY PROHIBITED AND ANY INFRINGEMENT THEREUPON MAY BE SUBJECT TO LEGAL ACTION.

BASE RAIL ANCHORAGE OPTIONS



2C

GROUND BASE HELIX ANCHORAGE
 SCALE: NTS

**MOORE AND ASSOCIATES
ENGINEERING AND CONSULTING, INC.**

DRAWN BY: AM

CHECKED BY: WSM

PROJECT MGR: WSM

CLIENT: SHED CENTRAL

SHED CENTRAL
 3648 W. US HIGHWAY 421
 WILKESBORO, NC 28697

30'-0" x 15'-0" ENCLOSED STRUCTURE

DATE: 12-31-18

SCALE: NTS

**JOB NO: 18196S/
18362S**

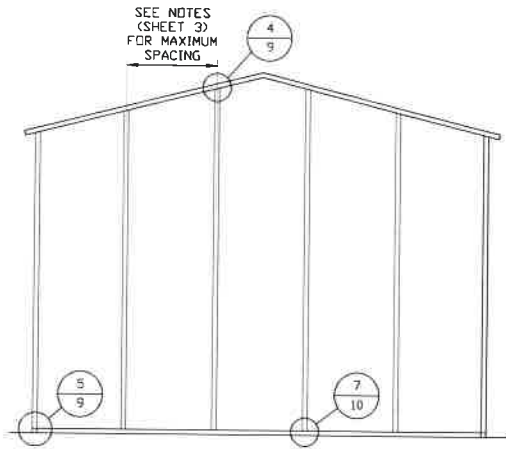
SHT. 7A

DWG. NO: SK-3

REV: 1

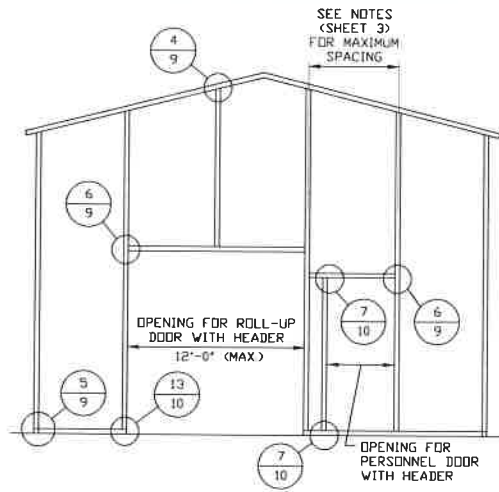
THIS DOCUMENT IS THE PROPERTY OF MOORE AND ASSOCIATES ENGINEERING AND CONSULTING. THE UNAUTHORIZED REPRODUCTION, COPYING, OR OTHERWISE USE OF THIS DOCUMENT IS STRICTLY PROHIBITED AND ANY INFRINGEMENT THEREUPON MAY BE SUBJECT TO LEGAL ACTION.

BOX EAVE RAFTER END WALL AND SIDE WALL OPENINGS



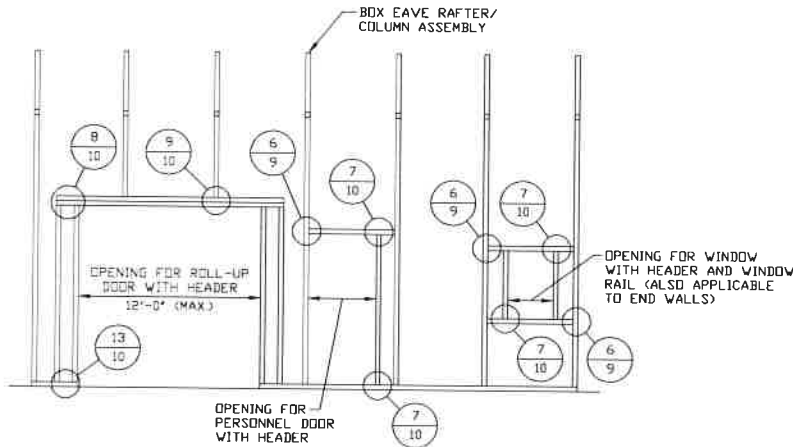
**TYPICAL BOX EAVE RAFTER
END WALL FRAMING SECTION**

SCALE: NTS



**TYPICAL BOX EAVE RAFTER END
WALL OPENINGS FRAMING SECTION**

SCALE: NTS



**TYPICAL BOX EAVE RAFTER
SIDE WALL OPENINGS FRAMING SECTION**

SCALE: NTS

**MOORE AND ASSOCIATES
ENGINEERING AND CONSULTING, INC.**

DRAWN BY: AM

CHECKED BY: WSM

PROJECT MGR: WSM

CLIENT: SHED CENTRAL

SHED CENTRAL
3648 W. US HIGHWAY 421
WILKESBORO, NC 28697

30'-0" x 15'-0" ENCLOSED STRUCTURE

DATE: 12-31-18

SHT. 8

SCALE: NTS

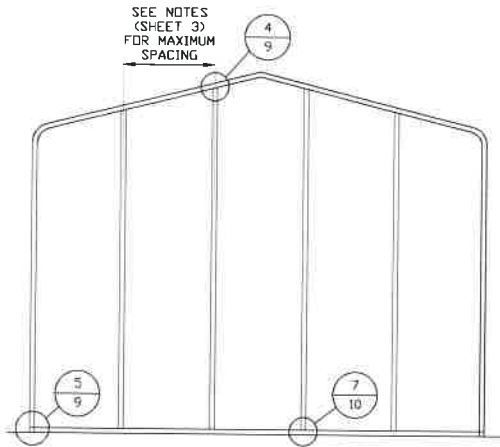
DWG. NO SK-3

**JOB NO 18196S/
18362S**

REV: 1

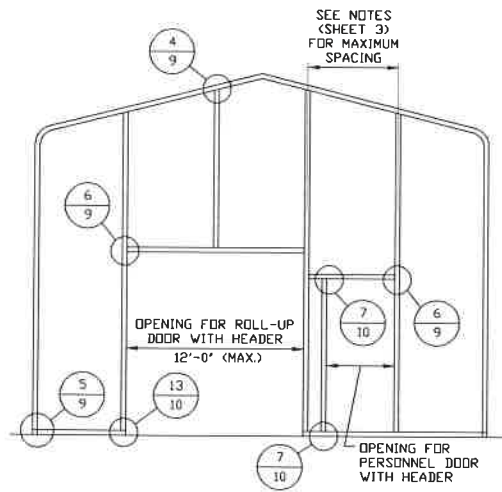
THIS DOCUMENT IS THE PROPERTY OF MOORE AND ASSOCIATES ENGINEERING AND CONSULTING. THE UNAUTHORIZED REPRODUCTION, COPYING, OR OTHERWISE USE OF THIS DOCUMENT IS STRICTLY PROHIBITED AND ANY INFRINGEMENT THEREUPON MAY BE SUBJECT TO LEGAL ACTION.

BOX EAVE RAFTER END WALL AND SIDE WALL OPENINGS



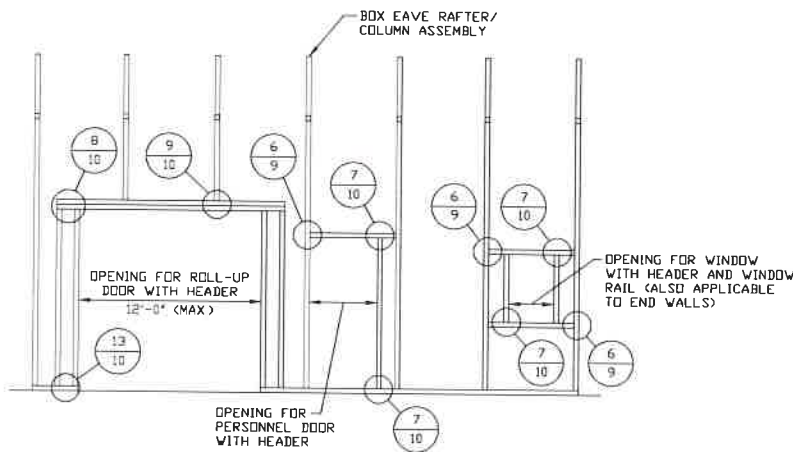
**TYPICAL BOX EAVE RAFTER
END WALL FRAMING SECTION**

SCALE: NTS



**TYPICAL BOX EAVE RAFTER END
WALL OPENINGS FRAMING SECTION**

SCALE: NTS



**TYPICAL BOX EAVE RAFTER
SIDE WALL OPENINGS FRAMING SECTION**

SCALE: NTS

**MOORE AND ASSOCIATES
ENGINEERING AND CONSULTING, INC.**

DRAWN BY: AM

CHECKED BY: WSM

PROJECT MGR: WSM

CLIENT: SHED CENTRAL

SHED CENTRAL
3648 W. US HIGHWAY 421
WILKESBORO, NC 28697
30'-0"X15'-0" ENCLOSED STRUCTURE

DATE: 12-31-18

SHT. 8A

SCALE: NTS

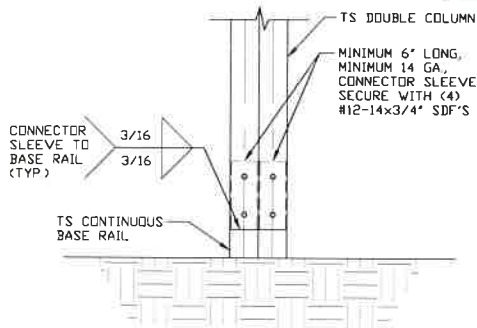
DWG. NO: SK-3

JOB NO: 18196S/
18362S

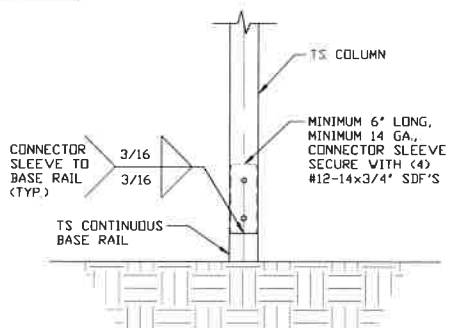
REV: 1

THIS DOCUMENT IS THE PROPERTY OF MOORE AND ASSOCIATES ENGINEERING AND CONSULTING. THE UNAUTHORIZED REPRODUCTION, COPYING, OR OTHERWISE USE OF THIS DOCUMENT IS STRICTLY PROHIBITED AND ANY INFRINGEMENT THEREUPON MAY BE SUBJECT TO LEGAL ACTION.

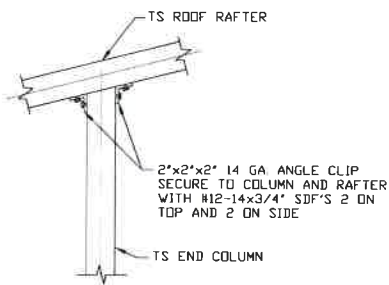
CONNECTION DETAILS



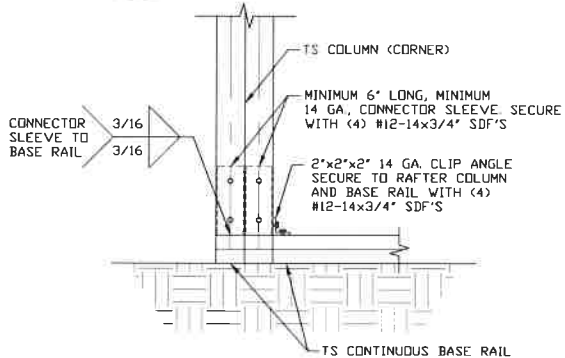
3A **POST/BASE RAIL CONNECTION DETAIL**
SCALE: NTS



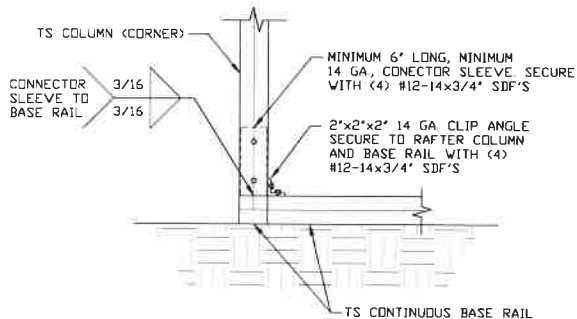
3B **POST/BASE RAIL CONNECTION DETAIL**
SCALE: NTS



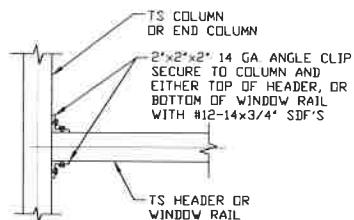
4 **END COLUMN/RAFTER CONNECTION DETAIL**
SCALE: NTS



5A **END COLUMN/BASE RAIL CONNECTION DETAIL**
SCALE: NTS



5B **END COLUMN/BASE RAIL CONNECTION DETAIL**
SCALE: NTS



6 **COLUMN OR WINDOW RAIL TO POST CONNECTION DETAIL**
SCALE: NTS

**MOORE AND ASSOCIATES
ENGINEERING AND CONSULTING, INC.**

DRAWN BY: AM
CHECKED BY: WSM

SHED CENTRAL
3648 W. US HIGHWAY 421
WILKESBORO, NC 28697
30'-0" x 15'-0" ENCLOSED STRUCTURE

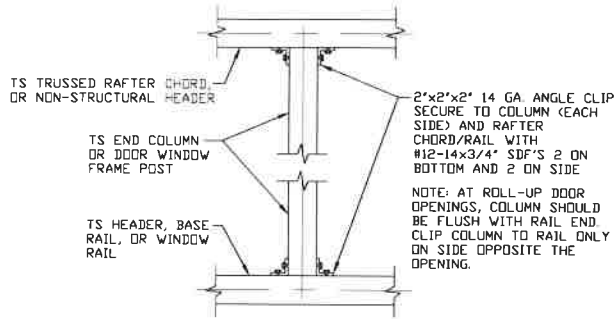
PROJECT MGR: WSM
CLIENT: SHED CENTRAL

DATE: 12-31-18
SHT. 9

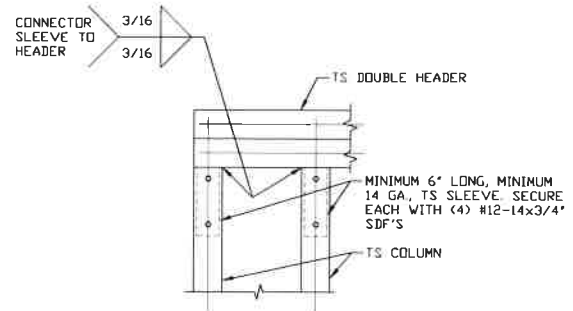
SCALE: NTS
DWG. NO: SK-3
JOB NO: 18196S/18362S
REV: 1

THIS DOCUMENT IS THE PROPERTY OF MOORE AND ASSOCIATES ENGINEERING AND CONSULTING. THE UNAUTHORIZED REPRODUCTION, COPYING, OR OTHERWISE USE OF THIS DOCUMENT IS STRICTLY PROHIBITED AND ANY INFRINGEMENT THEREUPON MAY BE SUBJECT TO LEGAL ACTION.

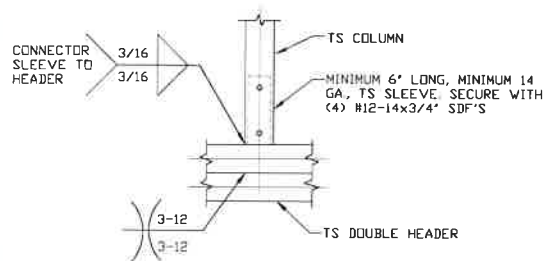
CONNECTION DETAILS



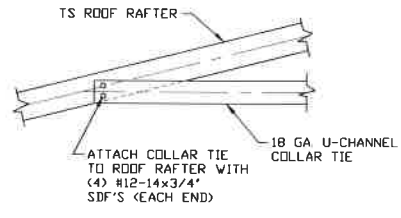
7 COLUMN TO HEADER, BASE RAIL, OR WINDOW RAIL CONNECTION DETAIL
SCALE: NTS



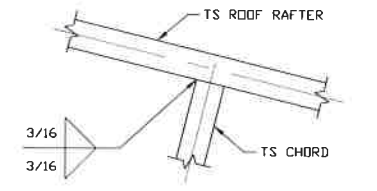
8 DOUBLE HEADER/COLUMN CONNECTION DETAIL
SCALE: NTS



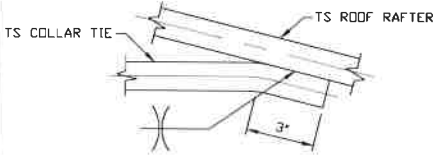
9 COLUMN/DOUBLE HEADER CONNECTION DETAIL
SCALE: NTS



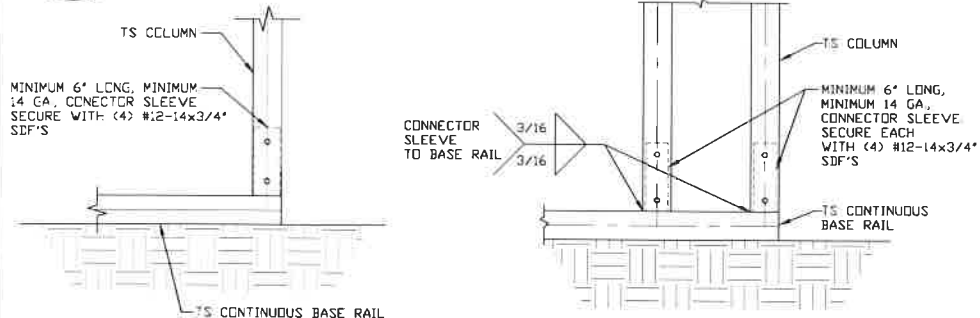
10 COLLAR TIE CONNECTION DETAIL
SCALE: NTS



11 RAFTER TO CHORD CONNECTION DETAIL
SCALE: NTS



12 COLLAR TIE CONNECTION DETAIL
SCALE: NTS



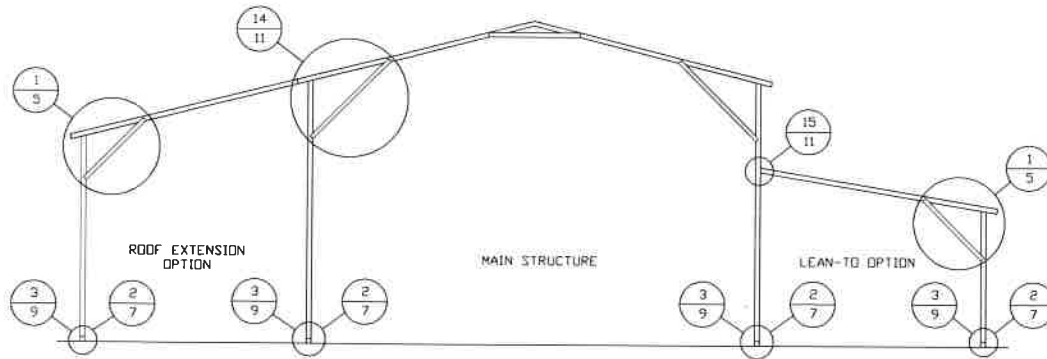
13 COLUMN/BASE RAIL CONNECTION DETAIL
SCALE: NTS

13A COLUMN/BASE RAIL CONNECTION DETAIL
SCALE: NTS

MOORE AND ASSOCIATES ENGINEERING AND CONSULTING, INC.	DRAWN BY: AM	SHED CENTRAL 3648 W. US HIGHWAY 421 WILKESBORO, NC 28697		
	CHECKED BY: WSM	30'-0" x 15'-0" ENCLOSED STRUCTURE		
PROJECT MGR: WSM	DATE: 12-31-18	SCALE: NTS	JOB NO: 18196S/ 18362S	
CLIENT: SHED CENTRAL	SHT. 10	DWG. NO: SK-3	REV: 1	

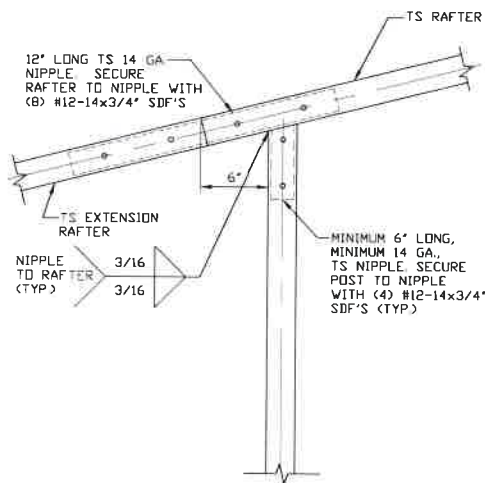
THIS DOCUMENT IS THE PROPERTY OF MOORE AND ASSOCIATES ENGINEERING AND CONSULTING. THE UNAUTHORIZED REPRODUCTION, COPYING, OR OTHERWISE USE OF THIS DOCUMENT IS STRICTLY PROHIBITED AND ANY INFRINGEMENT THEREUPON MAY BE SUBJECT TO LEGAL ACTION.

BOX EAVE RAFTER LEAN-TO OPTIONS



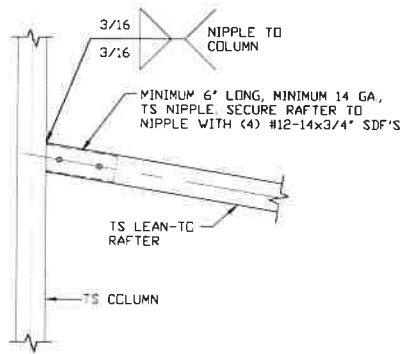
TYPICAL BOX EAVE RAFTER LEAN-TO OPTIONS FRAMING SECTION (BOTH OPTIONS SHOWN)

SCALE: NTS
 MAXIMUM WIDTH OF ROOF EXTENSION AND LEAN-TO OPTION IS 12'-0".



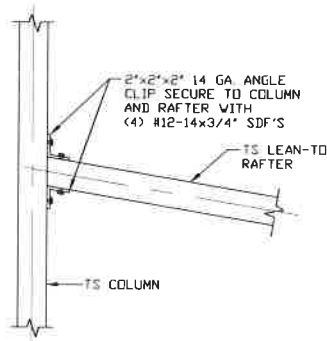
14 ROOF EXTENSION RAFTER/CORNER POST DETAIL FOR WIDTHS $\leq 12'-0''$

SCALE: NTS



15A LEAN-TO RAFTER TO RAFTER POST CONNECTION DETAIL FOR WIDTHS $\leq 12'-0''$

SCALE: NTS



15B LEAN-TO RAFTER TO RAFTER POST CONNECTION DETAIL FOR WIDTHS $\leq 12'-0''$

SCALE: NTS

**MOORE AND ASSOCIATES
 ENGINEERING AND CONSULTING, INC.**

DRAWN BY: AM

CHECKED BY: VSM

PROJECT MGR: VSM

CLIENT: SHED CENTRAL

SHED CENTRAL
 3648 W. US HIGHWAY 421
 WILKESBORO, NC 28697
 30'-0" x 15'-0" ENCLOSED STRUCTURE

DATE: 12-31-18

SHT. 11

SCALE: NTS

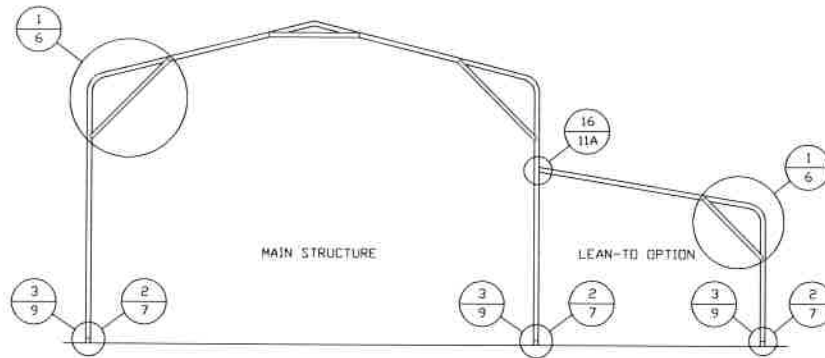
DWG. NO: SK-3

JOB NO: 18196S/
 18362S

REV: 1

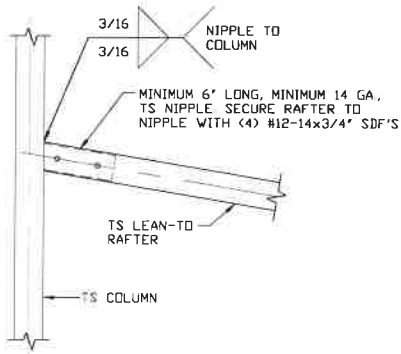
THIS DOCUMENT IS THE PROPERTY OF MOORE AND ASSOCIATES ENGINEERING AND CONSULTING. THE UNAUTHORIZED REPRODUCTION, COPYING, OR OTHERWISE USE OF THIS DOCUMENT IS STRICTLY PROHIBITED AND ANY INFRINGEMENT THEREUPON MAY BE SUBJECT TO LEGAL ACTION.

BOW EAVE RAFTER LEAN-TO OPTIONS



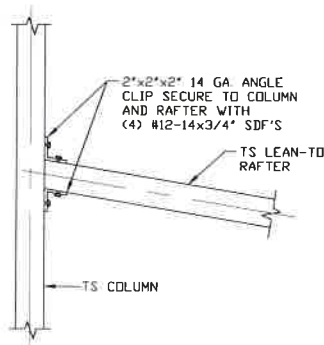
TYPICAL BOW EAVE RAFTER LEAN-TO OPTIONS FRAMING SECTION

SCALE: NTS
MAXIMUM WIDTH OF LEAN-TO OPTION IS 12'-0".



16A LEAN-TO RAFTER TO
RAFTER POST
CONNECTION DETAIL
FOR WIDTHS $\leq 12'-0"$

SCALE: NTS



16B LEAN-TO RAFTER
TO RAFTER POST
CONNECTION DETAIL
FOR WIDTHS $\leq 12'-0"$

SCALE: NTS

**MOORE AND ASSOCIATES
ENGINEERING AND CONSULTING, INC.**

DRAWN BY: AM

CHECKED BY: VSM

PROJECT MGR: VSM

CLIENT: SHED CENTRAL

SHED CENTRAL
3648 W. US HIGHWAY 421
WILKESBORO, NC 28697
30'-0" x 15'-0" ENCLOSED STRUCTURE

DATE: 12-31-18

SHT. 11A

SCALE: NTS

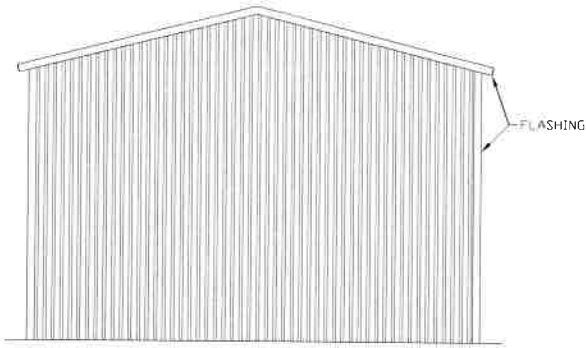
DWG. NO SK-3

**JOB NO 18196S/
18362S**

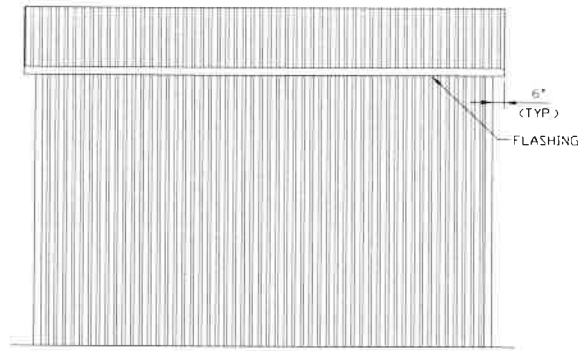
REV: 1

THIS DOCUMENT IS THE PROPERTY OF MOORE AND ASSOCIATES ENGINEERING AND CONSULTING. THE UNAUTHORIZED REPRODUCTION, COPYING, OR OTHERWISE USE OF THIS DOCUMENT IS STRICTLY PROHIBITED AND ANY INFRINGEMENT THEREUPON MAY BE SUBJECT TO LEGAL ACTION.

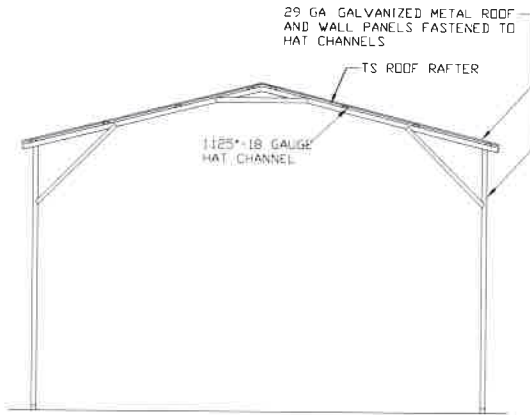
VERTICAL ROOF/SIDING OPTION



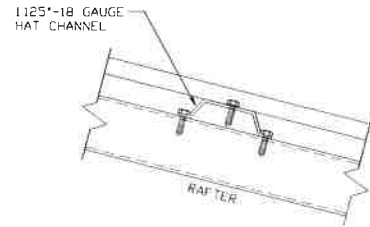
**TYPICAL END ELEVATION
VERTICAL ROOF/SIDING**
SCALE: NTS



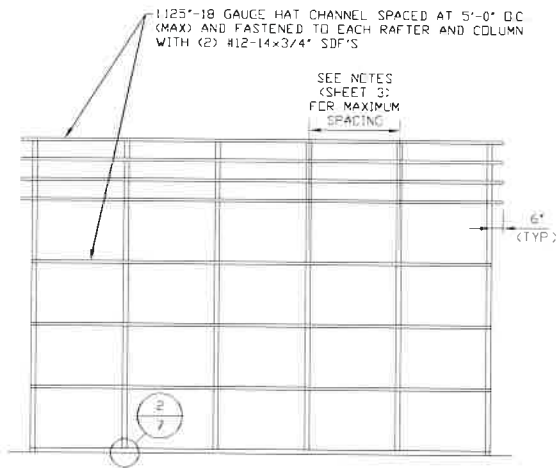
**TYPICAL SIDE ELEVATION
VERTICAL ROOF/SIDING**
SCALE: NTS



**TYPICAL SECTION
VERTICAL ROOF/SIDING OPTION**
SCALE: NTS



PANEL ATTACHMENT
(ALTERNATE FOR VERTICAL ROOF PANELS)
SCALE: NTS



**TYPICAL FRAMING SECTION
VERTICAL ROOF/SIDING OPTION**
SCALE: NTS

**MOORE AND ASSOCIATES
ENGINEERING AND CONSULTING, INC.**

DRAWN BY: AM

CHECKED BY: WSM

PROJECT MGR: WSM

CLIENT: SHED CENTRAL

SHED CENTRAL
3648 W. US HIGHWAY 421
WILKESBORO, NC 28697
30'-0" x 15'-0" ENCLOSED STRUCTURE

DATE: 12-31-18

SCALE: NTS

**JOB NO: 18196S/
18362S**

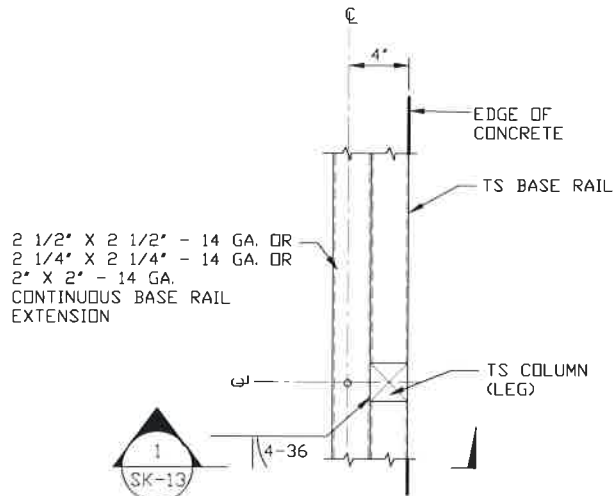
SHT. 12

DWG. NO: SK-3

REV: 1

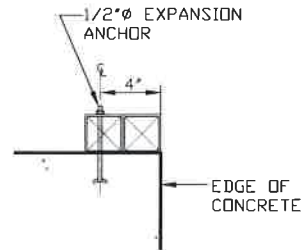
THIS DOCUMENT IS THE PROPERTY OF MOORE AND ASSOCIATES ENGINEERING AND CONSULTING. THE UNAUTHORIZED REPRODUCTION, COPYING, OR OTHERWISE USE OF THIS DOCUMENT IS STRICTLY PROHIBITED AND ANY INFRINGEMENT THEREUPON MAY BE SUBJECT TO LEGAL ACTION.

ADDITIONAL BASE RAIL ANCHORAGE OPTION



TYPICAL ANCHOR DETAIL WHEN BASE RAIL IS NEAR EDGE OF CONCRETE

SCALE: NTS



SECTION 1
SCALE: NTS

**MOORE AND ASSOCIATES
ENGINEERING AND CONSULTING, INC.**

DRAWN BY: AM

CHECKED BY: WSM

PROJECT MGR: WSM

CLIENT: SHED CENTRAL

SHED CENTRAL
3648 W. US HIGHWAY 421
WILKESBORO, NC 28697
30'-0" x 15'-0" ENCLOSED STRUCTURE

DATE: 12-31-18

SCALE: NTS

DWG. NO: SK-3

**JOB NO: 18196S/
18362S**

SHT. 13

REV: 1

THIS DOCUMENT IS THE PROPERTY OF MOORE AND ASSOCIATES ENGINEERING AND CONSULTING. THE UNAUTHORIZED REPRODUCTION, COPYING, OR OTHERWISE USE OF THIS DOCUMENT IS STRICTLY PROHIBITED AND ANY INFRINGEMENT THEREUPON MAY BE SUBJECT TO LEGAL ACTION.