

- GENERAL NOTES**
- REFER TO GENERAL PROJECT NOTES ON COVER SHEET
 - FURNITURE NOT IN CONTRACTOR'S SCOPE, FOR REFERENCE ONLY

- KEYNOTES**
- REMOVE EXISTING DOUBLE POWER RECEPTACLES
 - NEW RECEPTACLES TO BE SET BACK 18" FROM PARTITION WALLS
 - REMOVE EXISTING SWITCHES AND SET NEW SWITCHES AT 48" AFF. TYP.
 - NEW 15A 15A BREAKERS
 - REMOVE EXISTING RECEPTACLES AND INSTALL NEW RECEPTACLES
 - REMOVE EXISTING SWITCHES AND INSTALL NEW SWITCHES
 - REMOVE EXISTING RECEPTACLES AND INSTALL NEW RECEPTACLES

- SYMBOLS LEGEND**
- ⊕ DUPLEX RECEPTACLE
 - ⊕ DUPLEX RECEPTACLE MOUNTED HEIGHT
 - ↔ FLOORING DIRECTION
 - ⊕ ELEVATION SYMBOL

NOTE:
ALL DIMENSIONS UNLESS OTHERWISE NOTED ARE IN FEET AND INCHES. DIMENSIONS IN PARENTHESES ARE IN MILLIMETERS. DIMENSIONS IN PARENTHESES ARE TO BE USED ONLY IN CASE OF DISCREPANCY BETWEEN DIMENSIONS IN FEET AND INCHES.

1	FINISH	EDGE FOR THE FIN.
2	FINISH	EDGE FOR THE FIN.
3	FINISH	EDGE FOR THE FIN.
4	FINISH	EDGE FOR THE FIN.
5	FINISH	EDGE FOR THE FIN.
6	FINISH	EDGE FOR THE FIN.
7	FINISH	EDGE FOR THE FIN.
8	FINISH	EDGE FOR THE FIN.
9	FINISH	EDGE FOR THE FIN.
10	FINISH	EDGE FOR THE FIN.
11	FINISH	EDGE FOR THE FIN.
12	FINISH	EDGE FOR THE FIN.
13	FINISH	EDGE FOR THE FIN.
14	FINISH	EDGE FOR THE FIN.
15	FINISH	EDGE FOR THE FIN.
16	FINISH	EDGE FOR THE FIN.
17	FINISH	EDGE FOR THE FIN.
18	FINISH	EDGE FOR THE FIN.
19	FINISH	EDGE FOR THE FIN.
20	FINISH	EDGE FOR THE FIN.
21	FINISH	EDGE FOR THE FIN.
22	FINISH	EDGE FOR THE FIN.
23	FINISH	EDGE FOR THE FIN.
24	FINISH	EDGE FOR THE FIN.
25	FINISH	EDGE FOR THE FIN.
26	FINISH	EDGE FOR THE FIN.
27	FINISH	EDGE FOR THE FIN.
28	FINISH	EDGE FOR THE FIN.
29	FINISH	EDGE FOR THE FIN.
30	FINISH	EDGE FOR THE FIN.
31	FINISH	EDGE FOR THE FIN.
32	FINISH	EDGE FOR THE FIN.
33	FINISH	EDGE FOR THE FIN.
34	FINISH	EDGE FOR THE FIN.
35	FINISH	EDGE FOR THE FIN.
36	FINISH	EDGE FOR THE FIN.
37	FINISH	EDGE FOR THE FIN.
38	FINISH	EDGE FOR THE FIN.
39	FINISH	EDGE FOR THE FIN.
40	FINISH	EDGE FOR THE FIN.
41	FINISH	EDGE FOR THE FIN.
42	FINISH	EDGE FOR THE FIN.
43	FINISH	EDGE FOR THE FIN.
44	FINISH	EDGE FOR THE FIN.
45	FINISH	EDGE FOR THE FIN.
46	FINISH	EDGE FOR THE FIN.
47	FINISH	EDGE FOR THE FIN.
48	FINISH	EDGE FOR THE FIN.
49	FINISH	EDGE FOR THE FIN.
50	FINISH	EDGE FOR THE FIN.
51	FINISH	EDGE FOR THE FIN.
52	FINISH	EDGE FOR THE FIN.
53	FINISH	EDGE FOR THE FIN.
54	FINISH	EDGE FOR THE FIN.
55	FINISH	EDGE FOR THE FIN.
56	FINISH	EDGE FOR THE FIN.
57	FINISH	EDGE FOR THE FIN.
58	FINISH	EDGE FOR THE FIN.
59	FINISH	EDGE FOR THE FIN.
60	FINISH	EDGE FOR THE FIN.
61	FINISH	EDGE FOR THE FIN.
62	FINISH	EDGE FOR THE FIN.
63	FINISH	EDGE FOR THE FIN.
64	FINISH	EDGE FOR THE FIN.
65	FINISH	EDGE FOR THE FIN.
66	FINISH	EDGE FOR THE FIN.
67	FINISH	EDGE FOR THE FIN.
68	FINISH	EDGE FOR THE FIN.
69	FINISH	EDGE FOR THE FIN.
70	FINISH	EDGE FOR THE FIN.
71	FINISH	EDGE FOR THE FIN.
72	FINISH	EDGE FOR THE FIN.
73	FINISH	EDGE FOR THE FIN.
74	FINISH	EDGE FOR THE FIN.
75	FINISH	EDGE FOR THE FIN.
76	FINISH	EDGE FOR THE FIN.
77	FINISH	EDGE FOR THE FIN.
78	FINISH	EDGE FOR THE FIN.
79	FINISH	EDGE FOR THE FIN.
80	FINISH	EDGE FOR THE FIN.
81	FINISH	EDGE FOR THE FIN.
82	FINISH	EDGE FOR THE FIN.
83	FINISH	EDGE FOR THE FIN.
84	FINISH	EDGE FOR THE FIN.
85	FINISH	EDGE FOR THE FIN.
86	FINISH	EDGE FOR THE FIN.
87	FINISH	EDGE FOR THE FIN.
88	FINISH	EDGE FOR THE FIN.
89	FINISH	EDGE FOR THE FIN.
90	FINISH	EDGE FOR THE FIN.
91	FINISH	EDGE FOR THE FIN.
92	FINISH	EDGE FOR THE FIN.
93	FINISH	EDGE FOR THE FIN.
94	FINISH	EDGE FOR THE FIN.
95	FINISH	EDGE FOR THE FIN.
96	FINISH	EDGE FOR THE FIN.
97	FINISH	EDGE FOR THE FIN.
98	FINISH	EDGE FOR THE FIN.
99	FINISH	EDGE FOR THE FIN.
100	FINISH	EDGE FOR THE FIN.

ells
interior design

SMITH RESIDENCE
7501 N. 116th Ave. • K.C. MO

FLOOR PLAN

SMITH-A100



DO NOT SCALE THIS DRAWING

KEYNOTES

- 100 POLYMER FINISHED FUNKED WOOD GRAIN BOARD EXTEND FROM BASE FLOOR TO CEILING MATCH OTHER SIDING
- 101 SLATWOOD FINISH
- 102 5/8" PAINTED WOOD SHELVES ELEVATED 1" FROM PLATWOOD BASE
- 111 KILN DRIED WHITE OAK
- 120 LOW VOC TEMPERED GLOSS FINISHED PARTICULATE FREE PLATE
- 130 FINISHED 2" TOPNER
- 140 FINISHED 2" BENCH TOP CABINET, FINISHED PLATEWORK BASE
- 150 4" SQUARE OFFICE PAD PLUSH
- 160 KILN DRIED WHITE OAK
- 171 PLATEWORK MATCHING HEAD
- 180 FINISHED 2" COORDINATING SHELVES PAINTED TO MATCH BENCHWARE
- 200 BUILT IN SHELVES
- 201 MIRROR
- 202 40" ATTACHE BAG HANGER HEAD WITH HANGING HOLES



NOTE:

1. ALL CHANGES TO REVISIONS ARE IDENTIFIED WITH A TRIANGLE AND AN ALPHABETIC LETTERING SYSTEM. ONLY THE ORIGINAL NUMBERED REVISIONS THROUGH THE LAST REVISION ARE TO BE CONSIDERED. ALL OTHERS SHALL BE DELETED.

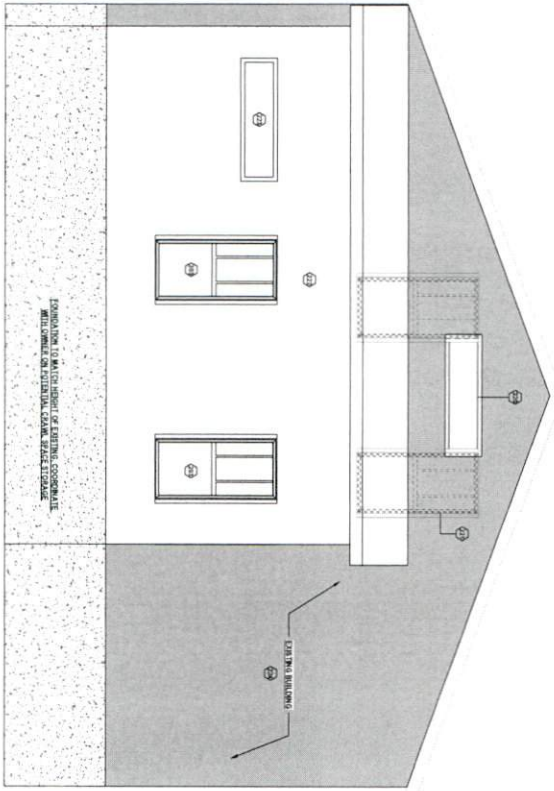
NO.	DATE	BY	DESCRIPTION



SMITH RESIDENCE
7074 140th St, Shawnee, MO 64288

DRAWING TITLE
INTERIOR ELEVATIONS

DRAWING NUMBER
SMITH-A200



1 EXTERIOR - EAST ELEVATION
SCALE: 1/2" = 1'-0"



2 EXTERIOR - SOUTH ELEVATION
SCALE: 1/2" = 1'-0"

NOTES:

1. ALL DIMENSIONS ARE TO FACE UNLESS OTHERWISE NOTED.
2. FINISHES TO BE DETERMINED BY THE ARCHITECT.
3. ALL MATERIALS TO BE APPROVED BY THE ARCHITECT.
4. ALL MATERIALS TO BE INSTALLED IN ACCORDANCE WITH THE MANUFACTURER'S INSTRUCTIONS.
5. ALL MATERIALS TO BE INSTALLED IN ACCORDANCE WITH THE MANUFACTURER'S INSTRUCTIONS.
6. ALL MATERIALS TO BE INSTALLED IN ACCORDANCE WITH THE MANUFACTURER'S INSTRUCTIONS.
7. ALL MATERIALS TO BE INSTALLED IN ACCORDANCE WITH THE MANUFACTURER'S INSTRUCTIONS.
8. ALL MATERIALS TO BE INSTALLED IN ACCORDANCE WITH THE MANUFACTURER'S INSTRUCTIONS.
9. ALL MATERIALS TO BE INSTALLED IN ACCORDANCE WITH THE MANUFACTURER'S INSTRUCTIONS.
10. ALL MATERIALS TO BE INSTALLED IN ACCORDANCE WITH THE MANUFACTURER'S INSTRUCTIONS.








SMITH RESIDENCE
2021 10th St. N.W. | Seattle, WA 98107

PROJECT TITLE
EXTERIOR ELEVATIONS

DATE: 11/11/2021
SMITH-H-001

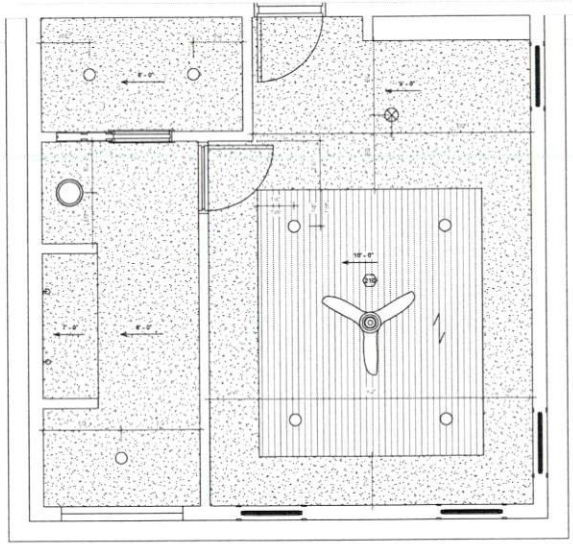


REFLECTED CEILING PLAN LEGEND

-  CEILING FAN
-  4" OR 6" RECESSED CAN LIGHTING
-  LIGHT EXHAUST FAN
-  PENDANT LIGHT FIXTURE - FLUSH MOUNT
-  WALL SCONCE

KEYNOTES

(1) RECESSED TO BE APPLIED TO CEILING METAL PER (2) & (3) ONLY.



1 REFLECTED CEILING PLAN
SCALE: 1/2" = 1'-0"

NOTE:
ALL CURRENT REVISIONS ARE IDENTIFIED WITH A NUMBER AND AN ALPHA OR NUMERIC CHARACTER. ALL PREVIOUS UNANNOUNCED REVISIONS WILL REMAIN AND ONLY CHANGE REVISIONS SHOULD BE DESIGNATED.

NO.	DATE	BY	REVISION



SMITH RESIDENCE
7011 14th St, Omaha, NE 68188

DRAWING TITLE
REFLECTED CEILING PLAN

OWNER/CLIENT
SMITH-A401



REVISIONS

REVISIONS TO THESE DRAWINGS ARE IDENTIFIED WITH A TRIANGLE AND NO NUMBER OF REVISIONS CHARACTERISTICS. THE NUMBER OF REVISIONS REQUIRED FOR THIS PROJECT WILL BE INDICATED ONLY ON THE DRAWING SHEETS. THE NUMBER OF REVISIONS TO BE MADE WILL BE INDICATED IN THE REVISIONS SECTION.

NO.	DATE	DESCRIPTION	BY

© 2010 ELLS INTERIOR DESIGN, INC. ALL RIGHTS RESERVED.
 DRAWING NO. SMTH-3D-01 (PARTIAL)
 PROJECT NO. SMTH-3D-01 (PARTIAL)



SMITH RESIDENCE
7211 VAN ALLEN, SEASIDE, NC 28586

EXTERIOR VIEWS

SMTH-3D

DO NOT SCALE THIS DRAWING