



REFERENCE:
 DEED BOOK 4327, PAGE 530
 PLAT CABINET 2000, SLIDE 435
 HARNETT COUNTY REGISTRY
 ACREAGE DETERMINED
 BY COORDINATE METHOD.
 NOT INTENDED TO BE PREPARED
 FOR RECORDATION IN ACCORDANCE
 WITH G. S. 47-30 AS AMENDED.
 CORPORATE LICENSE NO. C-1987

I certify that this map was drawn under my supervision from an actual survey made under my supervision; that the boundaries not surveyed are indicated as drawn from information shown hereon; that the ratio of precision or positional accuracy is 1/10,000+; and that this map meets the requirements of The Standards of Practice for Land Surveying in North Carolina (21 NCAC 56.1600).
 Further:
 I hereby certify that the premises shown & described hereon, do not lie in a F.E.M.A. designated 100 year flood plain area.

J. T. LEWIS, PLS NO. 5771
 DATE: JUNE 5, 2026

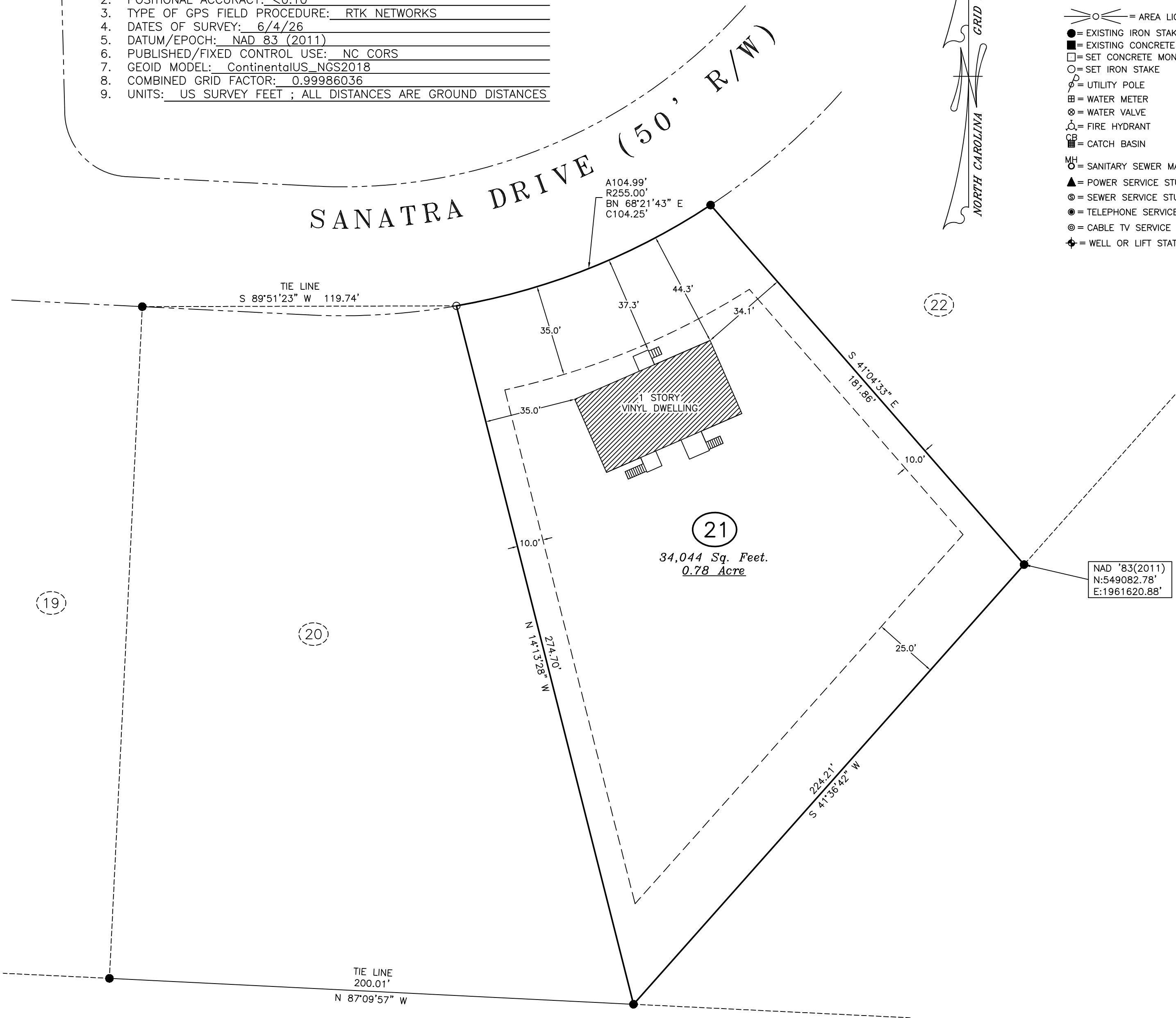


I, J. TREY LEWIS, CERTIFY THAT THIS MAP WAS DRAWN UNDER MY SUPERVISION FROM AN ACTUAL GPS SURVEY MADE UNDER MY SUPERVISION AND THE FOLLOWING INFORMATION WAS USED TO PERFORM THE SURVEY.

1. CLASS OF SURVEY: CLASS A
2. POSITIONAL ACCURACY: <0.10'
3. TYPE OF GPS FIELD PROCEDURE: RTK NETWORKS
4. DATES OF SURVEY: 6/4/26
5. DATUM/EPOCH: NAD 83 (2011)
6. PUBLISHED/FIXED CONTROL USE: NC CORS
7. GEOID MODEL: ContinentalUS_NGS2018
8. COMBINED GRID FACTOR: 0.99986036
9. UNITS: US SURVEY FEET ; ALL DISTANCES ARE GROUND DISTANCES

UNLESS OTHERWISE DENOTED,

- - - - - = FENCE
- sf - sf - sf - sf - sf - sf - = SILT FENCE
- — — — — = BOUNDARY LINE
- — — — — = OTHER SURVEYED LINE
- - - - - = RIGHT-OF-WAY LINE
- - - - - = EASEMENT LINE
- - - - - = NON-SURVEYED LINE
- E - E - E - E - E - E - = POWER LINE
- = AREA LIGHT
- = EXISTING IRON STAKE
- = EXISTING CONCRETE MONUMENT
- = SET CONCRETE MONUMENT
- = SET IRON STAKE
- ⊕ = UTILITY POLE
- ⊗ = WATER METER
- ⊙ = WATER VALVE
- ⊕ = FIRE HYDRANT
- CB = CATCH BASIN
- MH = SANITARY SEWER MANHOLE
- ▲ = POWER SERVICE STUB
- ⊙ = SEWER SERVICE STUB
- ⊙ = TELEPHONE SERVICE STUB
- ⊙ = CABLE TV SERVICE STUB
- ⊕ = WELL OR LIFT STATION



SURVEY FOR
VETS BUY HOUSES NC LLC
 LOT NO. 21, SECTION THREE
 LONGHORN ESTATES
 JOHNSONVILLE TOWNSHIP, HARNETT COUNTY,
 NORTH CAROLINA
 JUNE 5, 2026 -- SCALE 1"=30'
 STEPHEN R. SHEFFIELD & ASSOCIATES, P.A.
 155 ALLISON PAGE ROAD, SUITE C
 ABERDEEN, NORTH CAROLINA

