

Footing size (in.)	Footing max. load (lbs.) for 8" x 16" pier		
	1500 PSF	2000 PSF	2500 PSF
*16x16x6	2.5K	3.4K	4.3K
*20x20x6	4.0K	5.3K	6.7K
24x24x8	5.6K	7.6K	9.6K
30x30x10	8.5K	11.7K	14.8K
36x36x12	12.4K	16.7K	20.7K
42x42x14	16.5K	22.4K	28.2K
48x48x14	21.2K	N/A	N/A

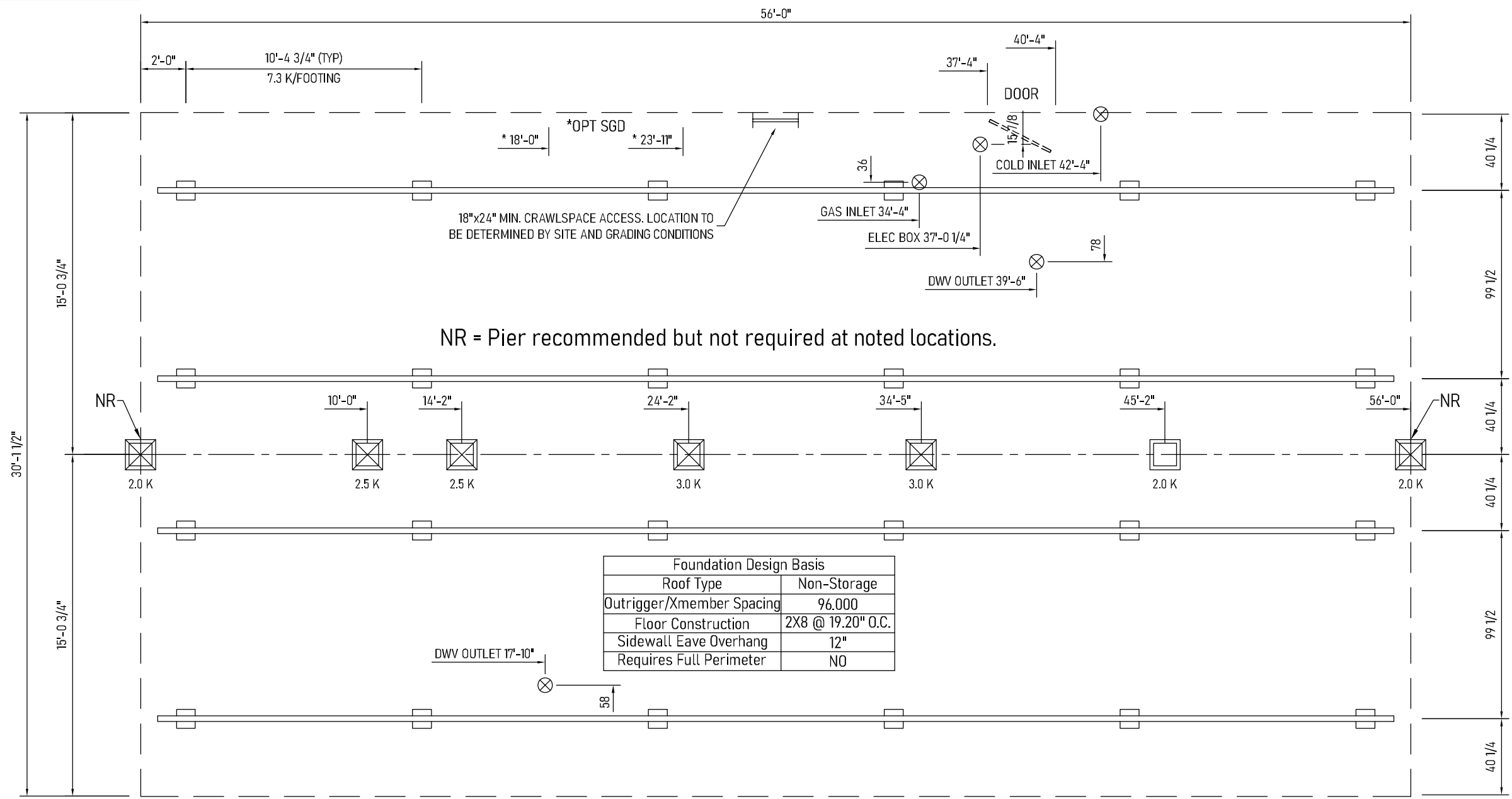
* = A 4" thick pre-cast footer of equivalent width and length may be used in place of a 6" thick cast in place footer.
 Footer size must be designed by others to site conditions if noted kip load exceeds capacities listed above

COLUMNS & FOOTINGS MUST BE RATED TO MEET THE CENTER LINE LOADS LISTED

GROUND SNOW LOAD
20 PSF

Kip loads noted are based on allowable stress design (ASD).
 Capacity of supports (columns, footings, etc.) must exceed noted Kip loads.
 Any changes to this plan that effect the foundation in any way will be the sole responsibility of the builder/dealer.

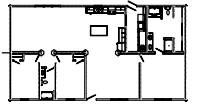
REFER TO INSTALLATION MANUAL FOR PERIMETER PIER BLOCKING REQUIREMENTS. PERIMETER PIER BLOCKINGS & FOOTERS ARE REQUIRED (RATED FOR 2.0K MIN) ON BOTH SIDES OF ALL EXTERIOR DOORS LOCATED IN THE SIDEWALLS (OR SEE ALTERNATE FLOOR REINFORCEMENT) AND ANY OPENING(S) IN THE SIDEWALL OF 4' OR MORE INCLUDING PATIO DOORS, RECESSED ENTRIES, BAY WINDOWS, BUMPOUTS AND PORCHES.



Foundation Design Basis	
Roof Type	Non-Storage
Outrigger/Xmember Spacing	96.000
Floor Construction	2X8 @ 19.20" O.C.
Sidewall Eave Overhang	12"
Requires Full Perimeter	NO

- CRAWLSPACE NOTES -

- CRAWLSPACE MUST BE VENTILATED PER IRC 408.1 AND IRC 408.2 (ONE VENTILATING OPENING TO BE WITHIN 3' OF EACH CORNER OF BUILDING. 1 SQ. FT. NET AREA PER EACH 150 SQ FT OF FOUNDATION AREA). REFER TO HUD INSTALLATION MANUAL FOR MORE INFORMATION.
- WIDTH DIMENSIONS SHOWN INCLUDE A 3/4" ALLOWANCE PER HOME SECTION FOR HOMES WITH FACTORY-INSTALLED O.S.B. ON THE MARRIAGE WALL MATE LINE. THIS ALLOWANCE TAKES INTO ACCOUNT THE 7/16" O.S.B. MATERIAL INSTALLED ON EACH MARRIAGE WALL PLUS ALLOWANCE DUE TO OTHER FACTORS. IF HOME DOES NOT INCLUDE O.S.B. ON THE MARRIAGE WALL MATE LINE, FOUNDATION WIDTH IS TO BE SIZED EQUAL TO ACTUAL MANUFACTURED FLOOR WIDTH. LESSER DIMENSION, IF SHOWN, INDICATES ACTUAL FLOOR WIDTH. THESE DIMENSIONS DO NOT ALLOW FOR ANY VARIANCE THAT MAY OCCUR IN SITE INSTALLATION SUCH AS GAPPING, OFF CENTER SET OR OTHER FIELD-ENCOUNTERED VARIABLES. ANY ADJUSTMENTS NEEDED IN FOUNDATION WIDTH DUE TO SUCH VARIANCES ARE AT THE DISCRETION OF THE INSTALLER.
- REFER TO INSTALLATION INSTRUCTIONS FOR ALL OTHER INFORMATION NOT COVERED BY THIS DRAWING. INSTALL PIER AND FOOTING AT EACH CORNER OF SIDEWALL WALK-OUT BAY WINDOW UNITS. CONCRETE COMPRESSIVE STRENGTH (FC): 3000 PSI MINIMUM.
- FOR DEVIATIONS &/OR OTHER FOUNDATION DESIGNS CONSULT A LOCAL PROFESSIONAL ENGINEER & YOUR LOCAL BUILDING OFFICIAL.



Builder: CAVCO of North Carolina	Callout: 3256	Revisions: 05/25/23 315	Scale: 3/16" = 1'-0"	Date: 02/15/2023	Cust: -	Model/Eng. No.: 32563
Title: 99.5 I-Beam Pier Blocking		Drawn By: GT	Reference: NONE		Dtr: -	C99.5-20#
					S/N: .	Pg.: 1