

EXISTING FRAMING PLAN

1/4" = 1'-0"

* Engineers seal does not include construction means, methods, techniques, sequences, procedures or safety precaution.
 * Any deviations or discrepancies on plans are to be brought to the immediate attention of Tyndall Engineering & Design, P.A. Failure to do so will void Tyndall Engineering & Design, P.A. liability.
 * Please review these documents carefully. Tyndall Engineering & Design, P.A. will interpret that all dimensions, recommendations, etc. presented in these documents were deemed acceptable once construction begins.

TYNDALL
 ENGINEERING & DESIGN, P.A.



T 919 775-1200 • F 919 775-9688
 250 Shipwash Drive • Garner • North Carolina • 27539
 www.tyndallengineering.com

Client:
ROSE FERGUSON

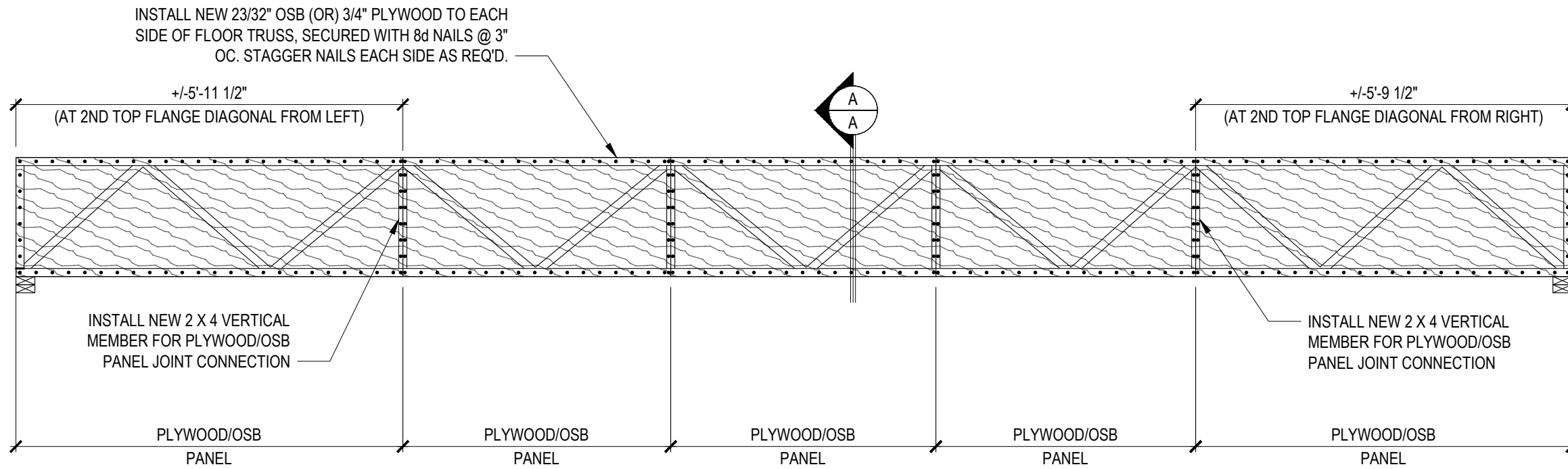
Plant:
 155 BLUE PINE DRIVE
 SPRING LAKE, NC



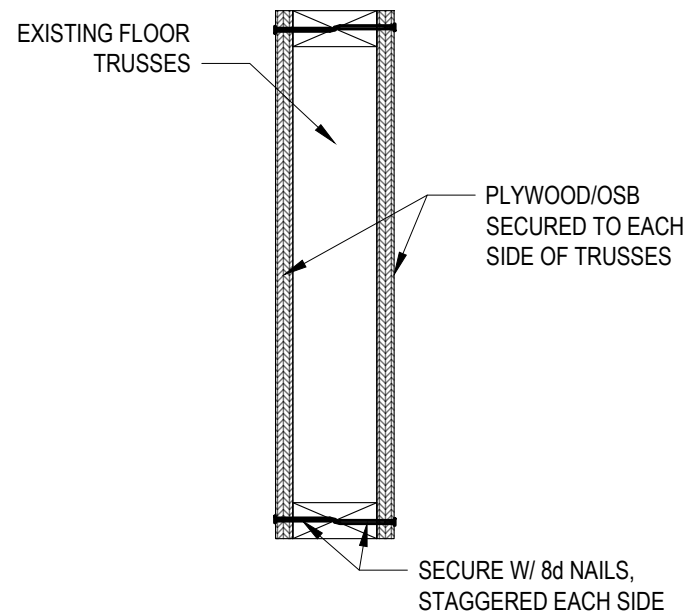
Project #: 2301-020116
 Date: 02/09/23
 Engineered By: AM
 DWG. Checked By: AWL
 Scale: SEE PLAN

REVISIONS		
No.	Date	Remarks
△		
△		
△		

Sheet Number
S1
 1 of 9



24'-0" & 24'-4" TRUSSES
1/2" = 1'-0"



SECTION A-A
1-1/2" = 1'-0"

* Engineers seal does not include construction means, methods, techniques, sequences, procedures or safety precaution.
 * Any deviations or discrepancies on plans are to be brought to the immediate attention of Tyndall Engineering & Design, P.A. Failure to do so will void Tyndall Engineering & Design, P.A. liability.
 * Please review these documents carefully. Tyndall Engineering & Design, P.A. will interpret that all dimensions, recommendations, etc. presented in these documents were deemed acceptable once construction begins.

TYNDALL
ENGINEERING & DESIGN, P.A.

1919 775-1200 • F 919 775-9688
 280 Shipwash Drive • Garner • North Carolina • 27539
 www.tyndallengineering.com

Client: ROSE FERGUSON

Plant: 155 BLUE PINE DRIVE
SPRING LAKE, NC

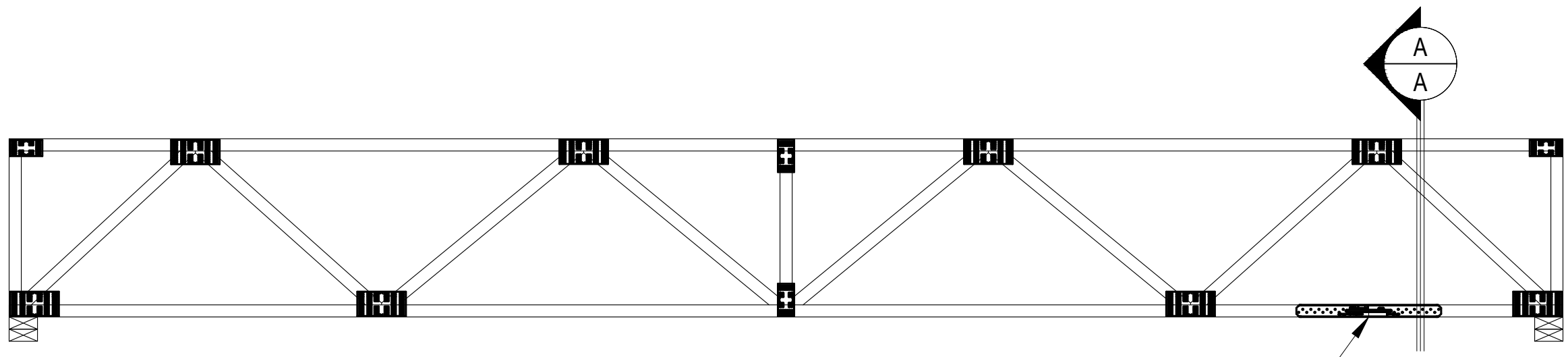


Project #: 2301-020116
 Date: 02/09/23
 Engineered By: AM
 DWG. Checked By: AWL
 Scale: SEE PLAN

REVISIONS		
No.	Date	Remarks

Sheet Number
S2.1
3 of 9

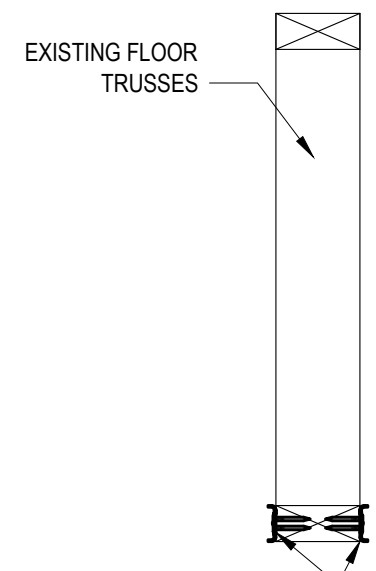
* Engineers seal does not include construction means, methods, techniques, sequences, procedures or safety precaution.
 * Any deviations or discrepancies on plans are to be brought to the immediate attention of Tyndall Engineering & Design, P.A. Failure to do so will void Tyndall Engineering & Design, P.A. liability.
 * Please review these documents carefully. Tyndall Engineering & Design, P.A. will interpret that all dimensions, recommendations, etc. presented in these documents were deemed acceptable once construction begins.



INSTALL SIMP. CTS18 STRAPS TO EACH SIDE OF SPLICE, SECURED W/ 10 NAILS (0.148" X 1-1/2")

16'-0" TRUSSES

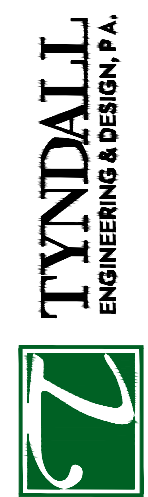
3/4" = 1'-0"



SIMP. CTS18 STRAPS, SECURED TO EACH SIDE AT FLANGE SPLICE LOCATION

SECTION A-A

1-1/2" = 1'-0"

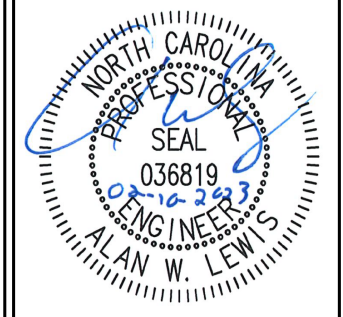


TYNDALL
ENGINEERING & DESIGN, P.A.

T 919 775-1200 • F 919 775-9688
 280 Shipwash Drive • Garner • North Carolina • 27539
 www.tyndallengineering.com

Client:
ROSE FERGUSON

Plant:
155 BLUE PINE DRIVE
SPRING LAKE, NC

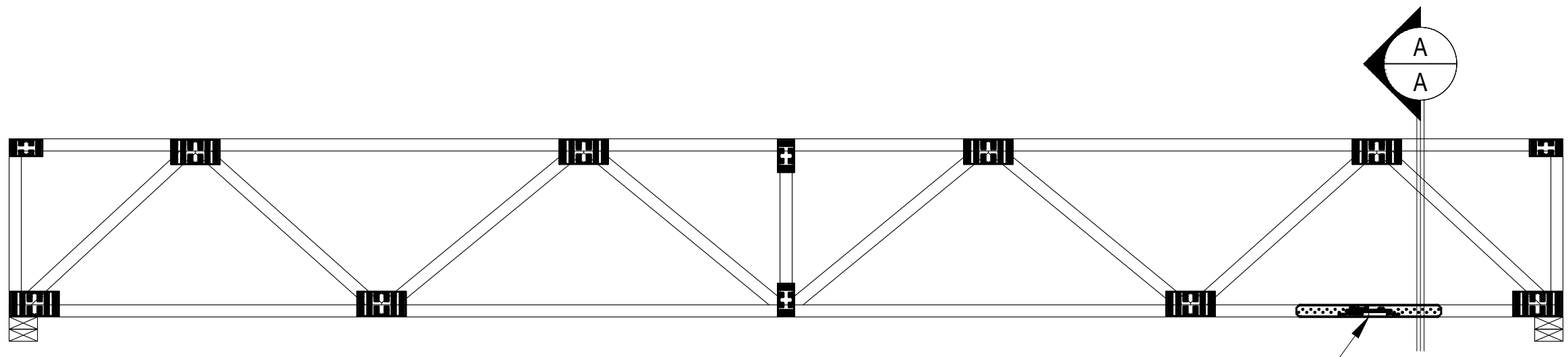


Project #: 2301-020116
 Date: 02/09/23
 Engineered By: AM
 DWG. Checked By: AWL
 Scale: SEE PLAN

REVISIONS		
No.	Date	Remarks
△		
△		
△		

Sheet Number
S2.2
 4 of 9

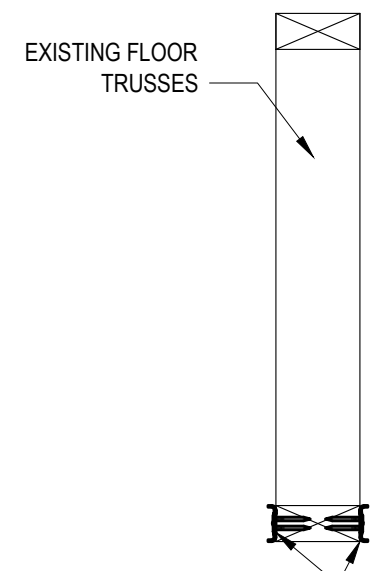
* Engineers seal does not include construction means, methods, techniques, sequences, procedures or safety precaution.
 * Any deviations or discrepancies on plans are to be brought to the immediate attention of Tyndall Engineering & Design, P.A. Failure to do so will void Tyndall Engineering & Design, P.A. liability.
 * Please review these documents carefully. Tyndall Engineering & Design, P.A. will interpret that all dimensions, recommendations, etc. presented in these documents were deemed acceptable once construction begins.



INSTALL SIMP. CTS18 STRAPS TO EACH SIDE OF SPLICE, SECURED W/ 10 NAILS (0.148" X 1-1/2")

16'-0" TRUSSES

3/4" = 1'-0"



SIMP. CTS18 STRAPS, SECURED TO EACH SIDE AT FLANGE SPLICE LOCATION

SECTION A-A

1-1/2" = 1'-0"

TYNDALL
ENGINEERING & DESIGN, P.A.



T 919 775-1200 • F 919 775-9688
 Garner • North Carolina • 27839
 www.tyndallengineering.com

Client:
ROSE FERGUSON

Plant:
155 BLUE PINE DRIVE
SPRING LAKE, NC



Project #: 2301-020116
 Date: 02/09/23
 Engineered By: AM
 DWG. Checked By: AWL
 Scale: SEE PLAN

REVISIONS		
No.	Date	Remarks

Sheet Number
S3.1
 6 of 9

* Engineers seal does not include construction means, methods, techniques, sequences, procedures or safety precaution.
 * Any deviations or discrepancies on plans are to be brought to the immediate attention of Tyndall Engineering & Design, P.A. Failure to do so will void Tyndall Engineering & Design, P.A. liability.
 * Please review these documents carefully. Tyndall Engineering & Design, P.A. will interpret that all dimensions, recommendations, etc. presented in these documents were deemed acceptable once construction begins.

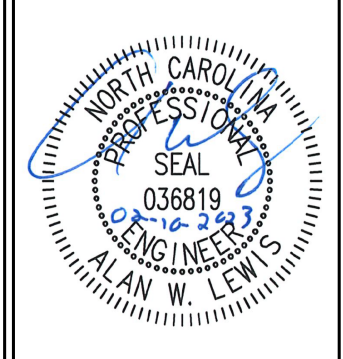
TYNDALL
 ENGINEERING & DESIGN, P.A.



± 919 775-1200 • ± 919 775-9686
 Failure to do so will void Tyndall Engineering & Design, P.A. liability.
 250 Shipwash Drive • Garner • North Carolina • 27529
 www.tyndallengineering.com

Client:
ROSE FERGUSON

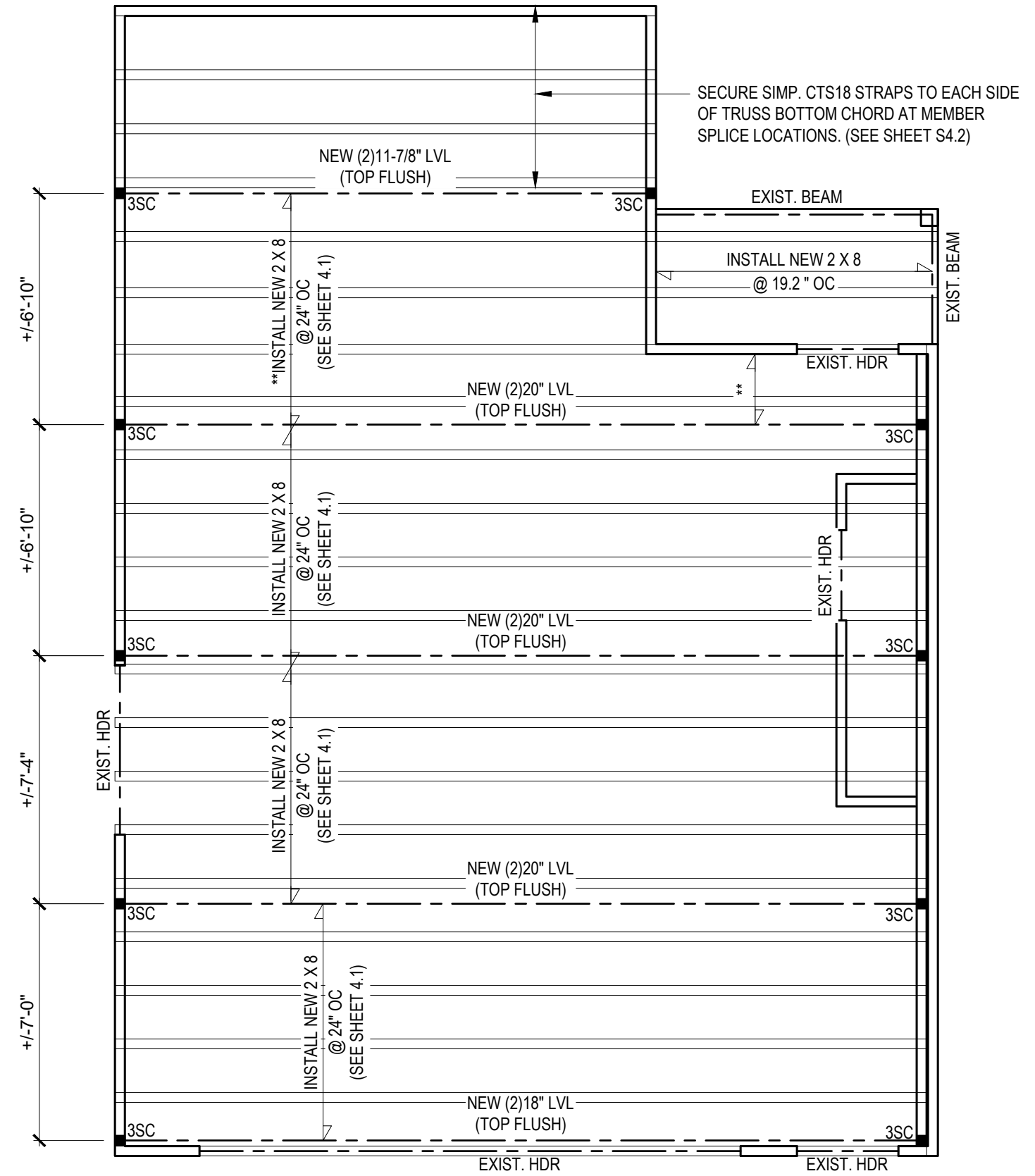
Plant:
 155 BLUE PINE DRIVE
 SPRING LAKE, NC



Project #: 2301-020116
 Date: 02/09/23
 Engineered By: AM
 DWG. Checked By: AWL
 Scale: SEE PLAN

REVISIONS		
No.	Date	Remarks

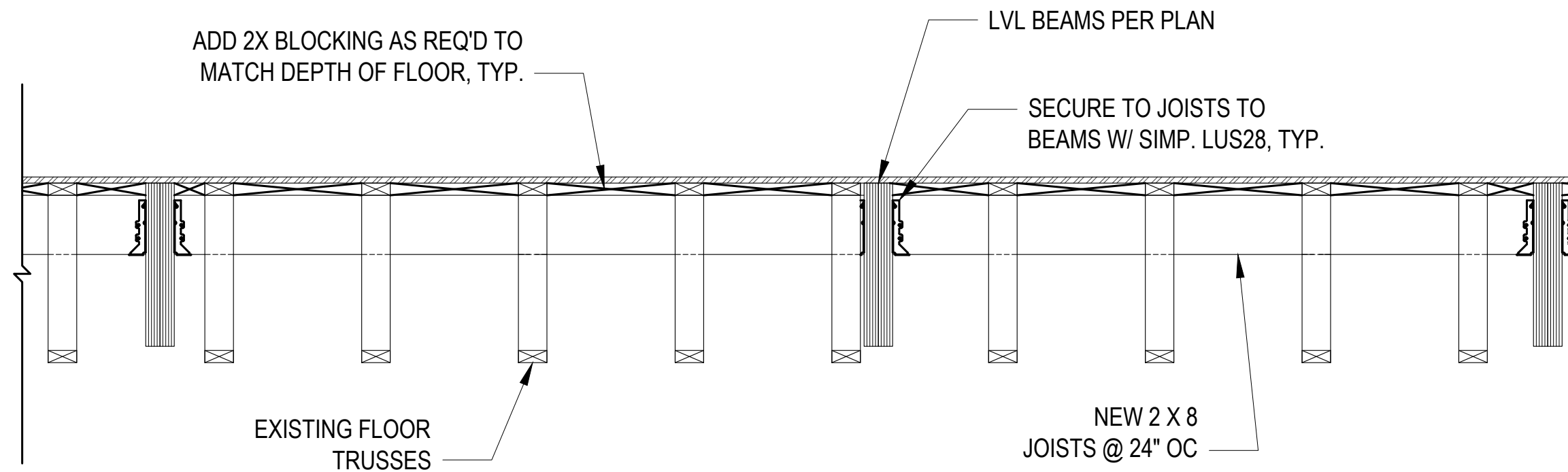
Sheet Number
S4
 7 of 9



NOTE:
 DURING THE SITE VISIT, THERE WAS VISIBLE EVIDENCE THAT WATER WAS LEAKING THROUGH THE FLOOR SHEATHING ABOVE. THE BUILDER IS TO ENSURE THAT THE FLOOR JOISTS ARE PROPERLY WATERPROOFED AND THERE IS NO MOISTURE BETWEEN THE JOISTS AND THE FLOOR SHEATHING ABOVE.

REPAIR OPTION 3 PLAN

1/4" = 1'-0"



NEW LVL BEAM INSTALLATION

SCALE: 3/4" = 1'-0"

* Engineers seal does not include construction means, methods, techniques, sequences, procedures or safety precaution.
 * Any deviations or discrepancies on plans are to be brought to the immediate attention of Tyndall Engineering & Design, P.A. Failure to do so will void Tyndall Engineering & Design, P.A. liability.
 * Please review these documents carefully. Tyndall Engineering & Design, P.A. will interpret that all dimensions, recommendations, etc. presented in these documents were deemed acceptable once construction begins.

TYNDALL
ENGINEERING & DESIGN, P.A.



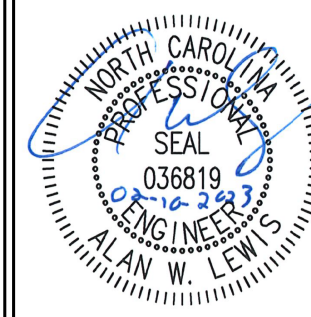
T 919 775-1200 • F 919 775-9688
 Garner • North Carolina • 27839
 www.tyndallengineering.com

Client:

ROSE FERGUSON

Plant:

155 BLUE PINE DRIVE
 SPRING LAKE, NC



Project #:

2301-020116

Date:

02/09/23

Engineered By:

AM

DWG. Checked By:

AWL

Scale:

SEE PLAN

REVISIONS

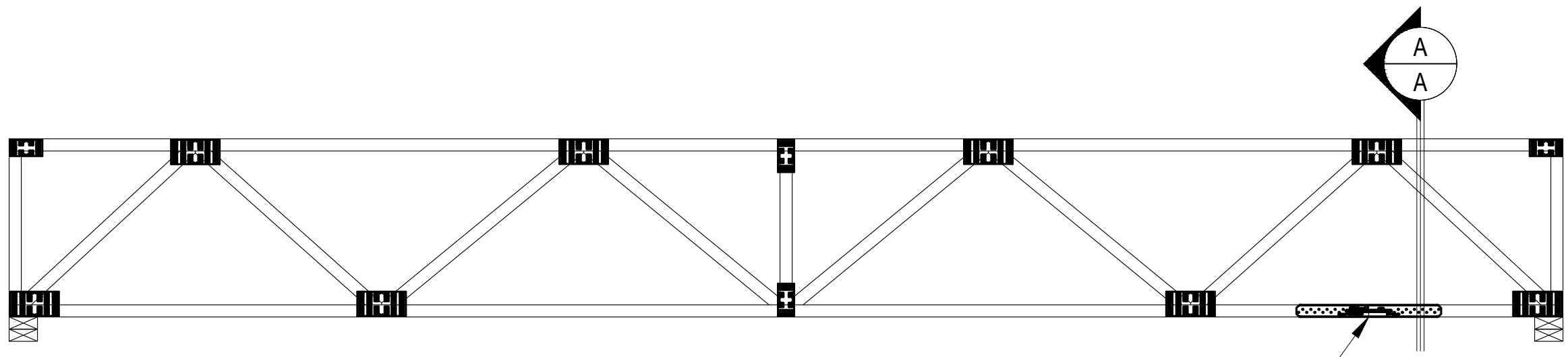
No.	Date:	Remarks
△		
△		
△		

Sheet Number

S4.1

8 of 9

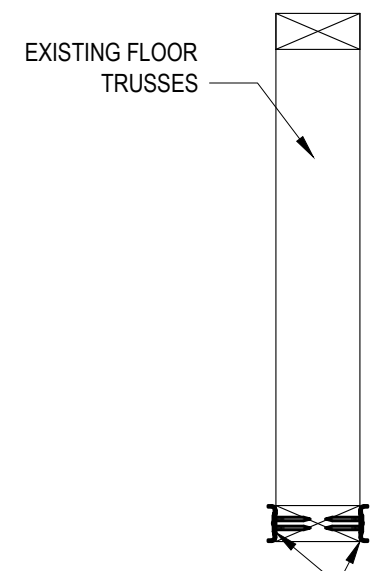
* Engineers seal does not include construction means, methods, techniques, sequences, procedures or safety precaution.
 * Any deviations or discrepancies on plans are to be brought to the immediate attention of Tyndall Engineering & Design, P.A. Failure to do so will void Tyndall Engineering & Design, P.A. liability.
 * Please review these documents carefully. Tyndall Engineering & Design, P.A. will interpret that all dimensions, recommendations, etc. presented in these documents were deemed acceptable once construction begins.



INSTALL SIMP. CTS18 STRAPS TO EACH SIDE OF SPLICE, SECURED W/ 10 NAILS (0.148" X 1-1/2")

16'-0" TRUSSES

3/4" = 1'-0"



SIMP. CTS18 STRAPS, SECURED TO EACH SIDE AT FLANGE SPLICE LOCATION

SECTION A-A

1-1/2" = 1'-0"

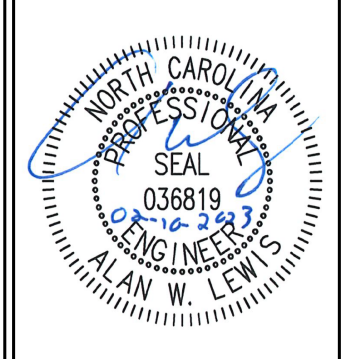
TYNDALL
ENGINEERING & DESIGN, P.A.



T 919 775-1200 • F 919 775-9688
 Garner • North Carolina • 27834
 www.tyndallengineering.com

Client:
ROSE FERGUSON

Plant:
155 BLUE PINE DRIVE
SPRING LAKE, NC



Project #: 2301-020116
 Date: 02/09/23
 Engineered By: AM
 DWG. Checked By: AWL
 Scale: SEE PLAN

REVISIONS		
No.	Date:	Remarks
△		
△		
△		

Sheet Number
S4.2
 9 of 9