

OWNER/A

N/A

CHESTER L. KIZER

DB 531 PG. 275 - PIN #

DB 804 PG. 822 - PIN #

DB 726 PG. - PIN #

DB 420 PG. - PIN #

TRACT 1

6.000 ACRES GROSS

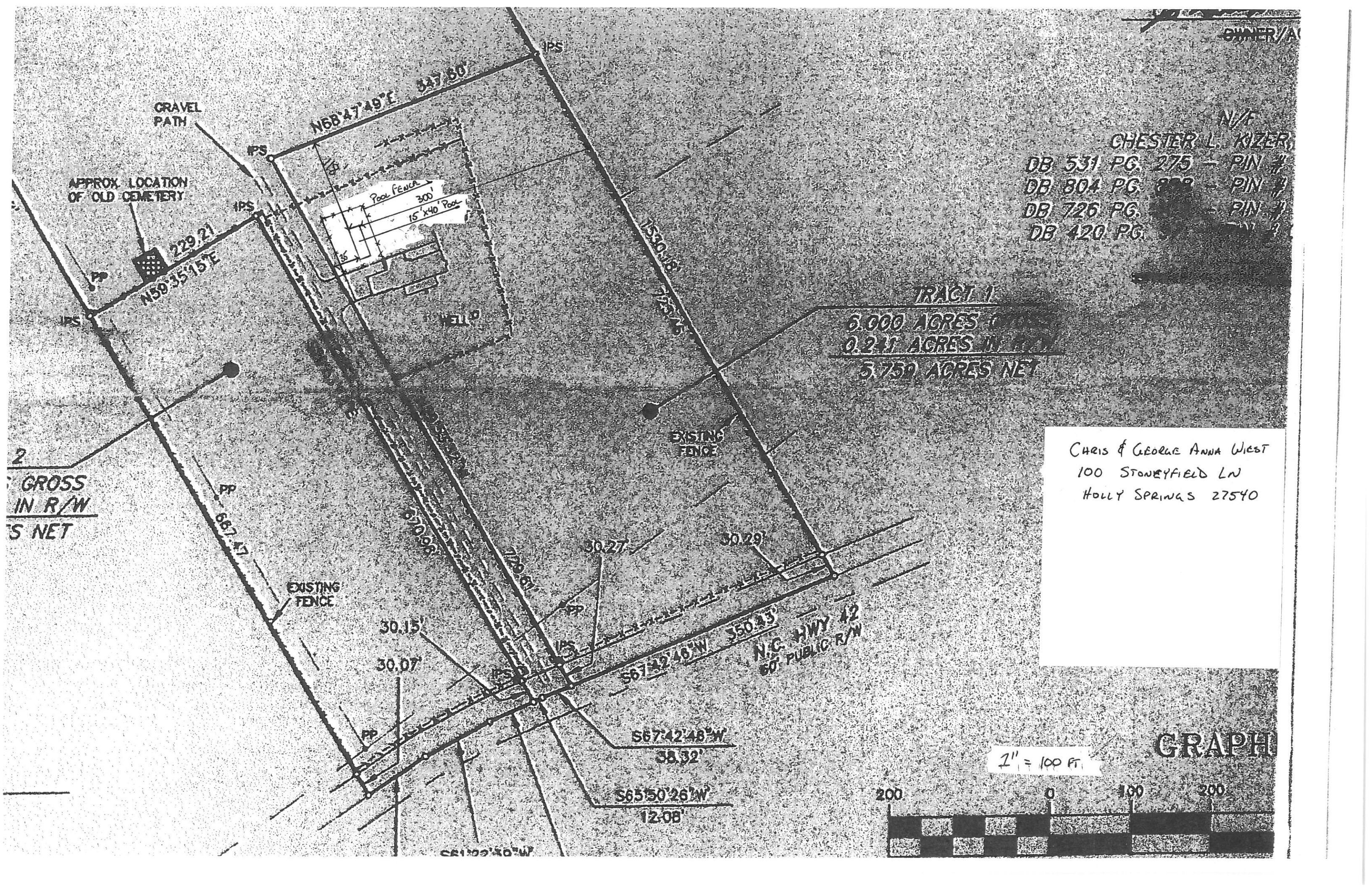
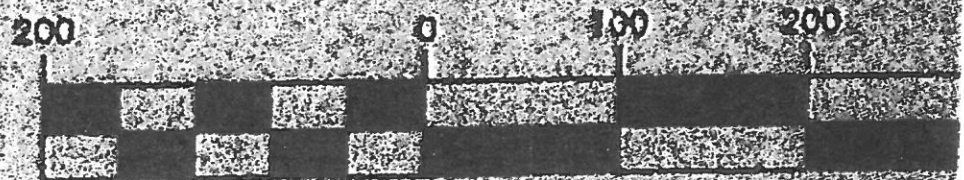
0.241 ACRES IN R/W

5.759 ACRES NET

CHRIS & GEORGE ANNA WEST  
100 STONEYFIELD LN  
HOLLY SPRINGS 27540

GRAPH

1" = 100 FT.



GRAVEL PATH

APPROX. LOCATION OF OLD CEMETERY

N68°47'49"E 347.60'

229.21'  
N59°35'15"E

Pool Fence  
300'  
15' x 40' Pool

EXISTING FENCE

EXISTING FENCE

GROSS IN R/W  
S NET

N.C. HWY 42  
60' PUBLIC R/W

S67°42'48"W  
38.32'

S65°50'26"W  
12.08'

S61°22'30"W

30.15'  
30.07'

30.27'

30.29'

687.47'

670.96'

726.61'

S67°42'48"W  
350.43'

1530.18'  
715.75'

1/8'

35'

1/8'

1/8'

1/8'

1/8'

1/8'

1/8'

1/8'

1/8'

1/8'

1/8'

1/8'

IPS

IPS

IPS

IPS

PP

PP

PP

PP

PP

IPS

IPS

IPS

IPS

IPS

IPS

PP

PP

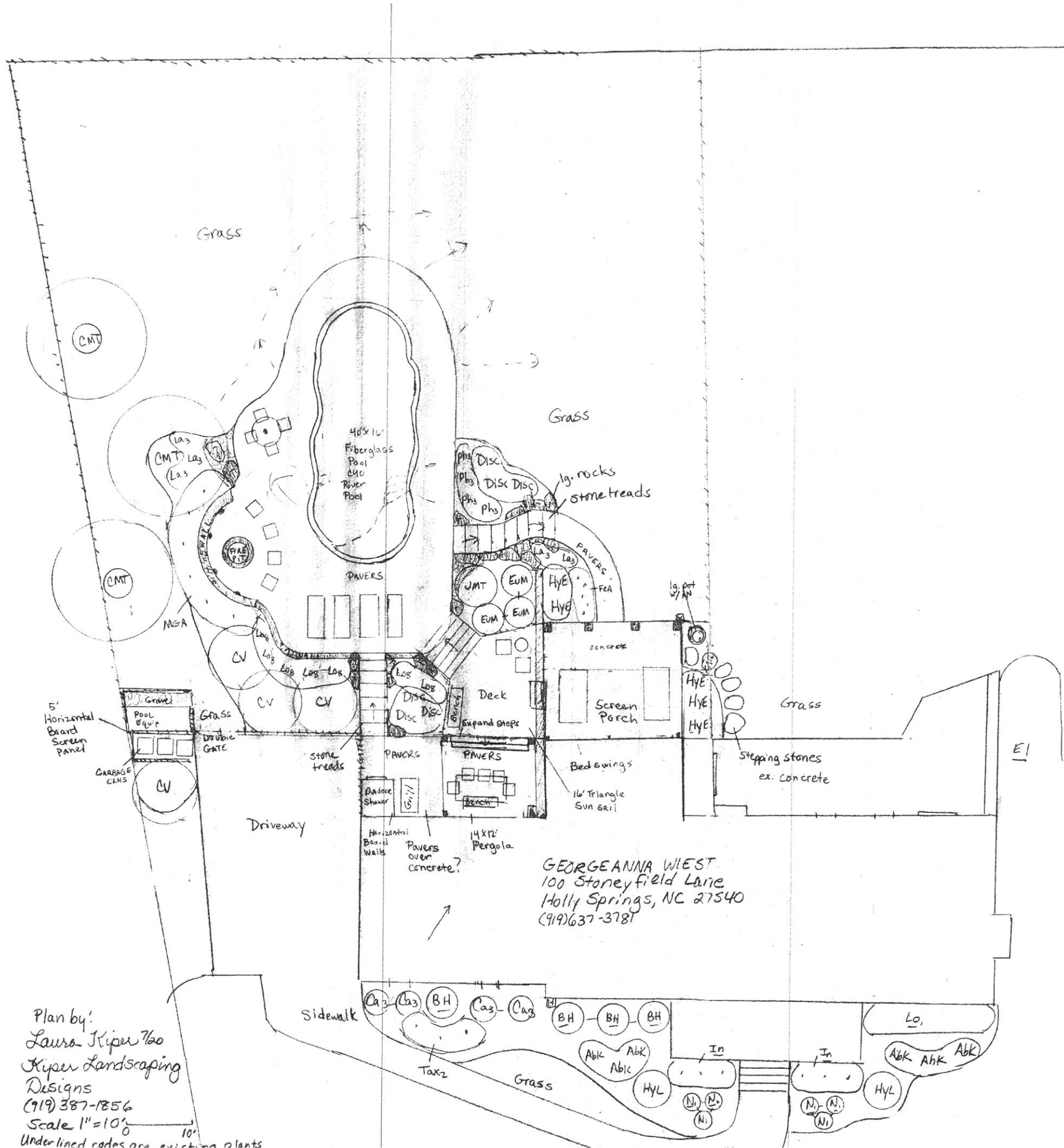
PP

PP

PP

PP





GEORGEANNA WIEST  
 100 Stoneyfield Lane  
 Holly Springs, NC 27540  
 (919) 637-3781

Plan by:  
 Laura Kiper 760  
 Kiper Landscaping  
 Designs  
 (919) 387-1856  
 Scale 1" = 10'  
 Underlined codes are existing plants