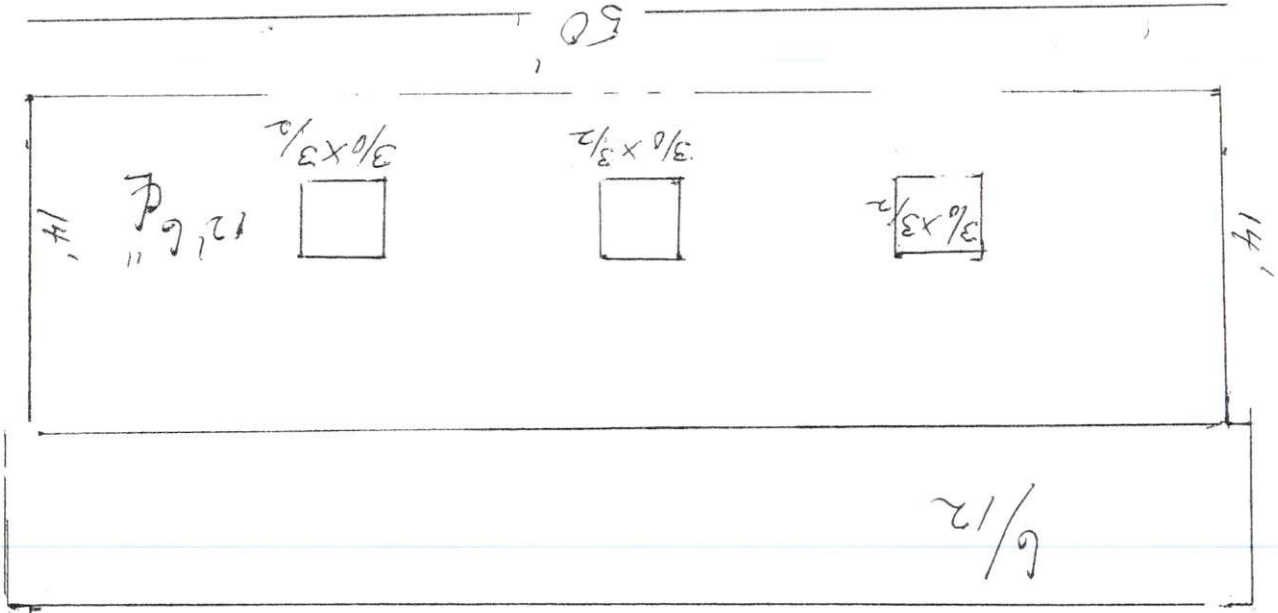
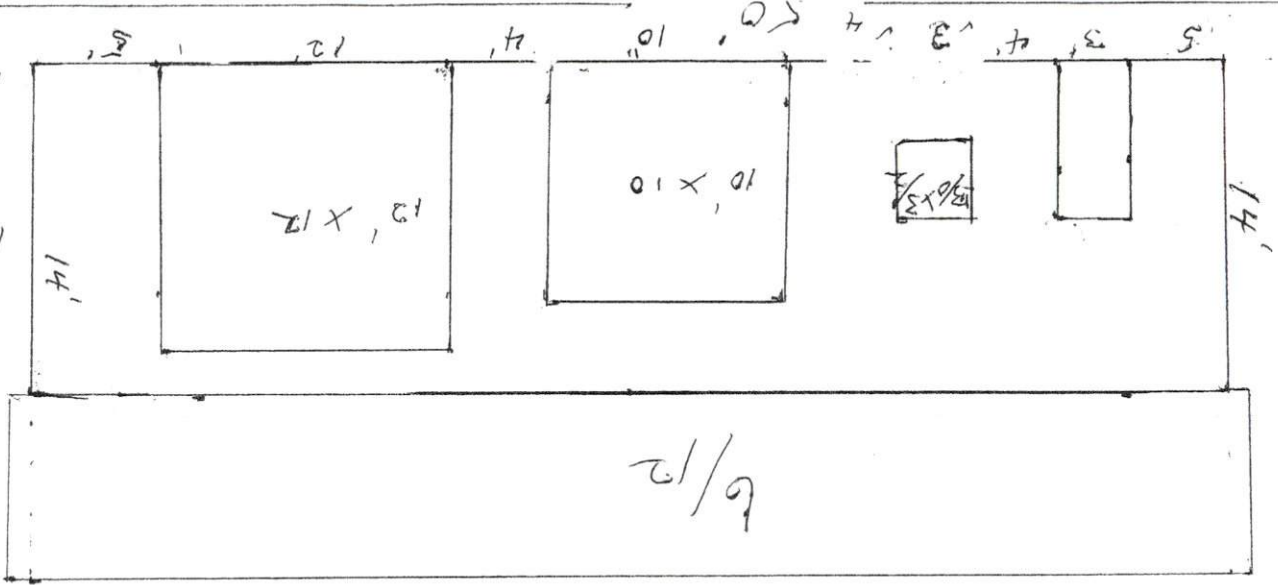


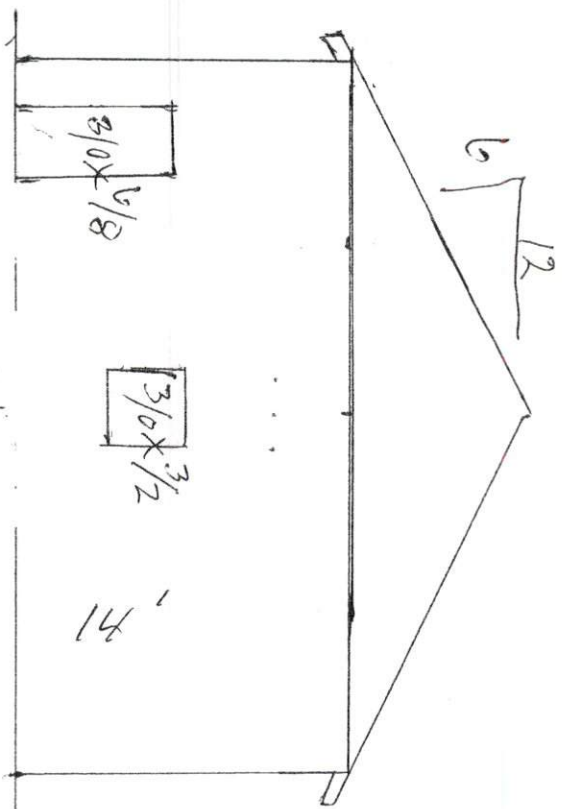
J JACKSON JOHNSON JOB



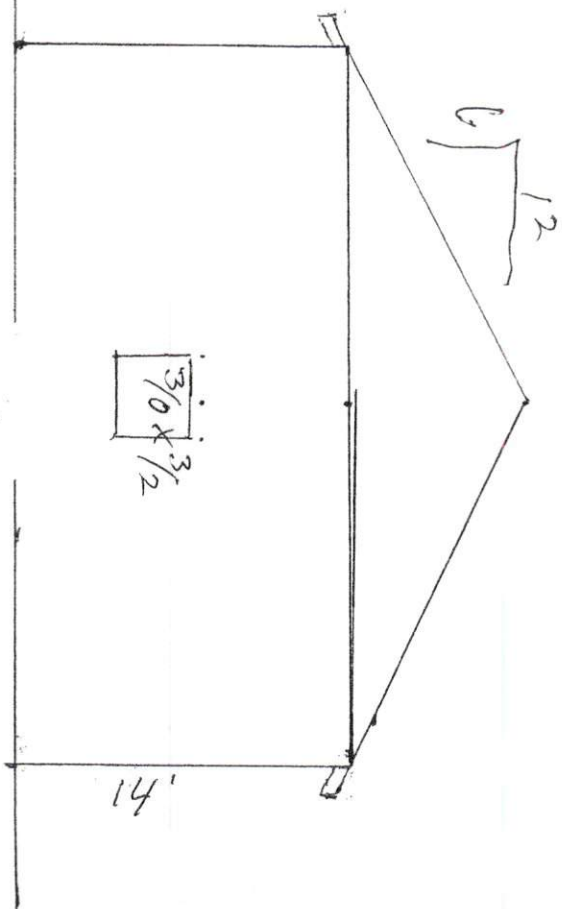
REAR ELEV.
1/8" = 1'



FRONT ELEV.
1/8" = 1'



LEFT END ELEV.



RIGHT END ELEV.

$1/8" = 1'$

29 GA. METAL
ON WALLS
2x4 30" OC

6x6 TREATED POST
12' OC

14' HIGH

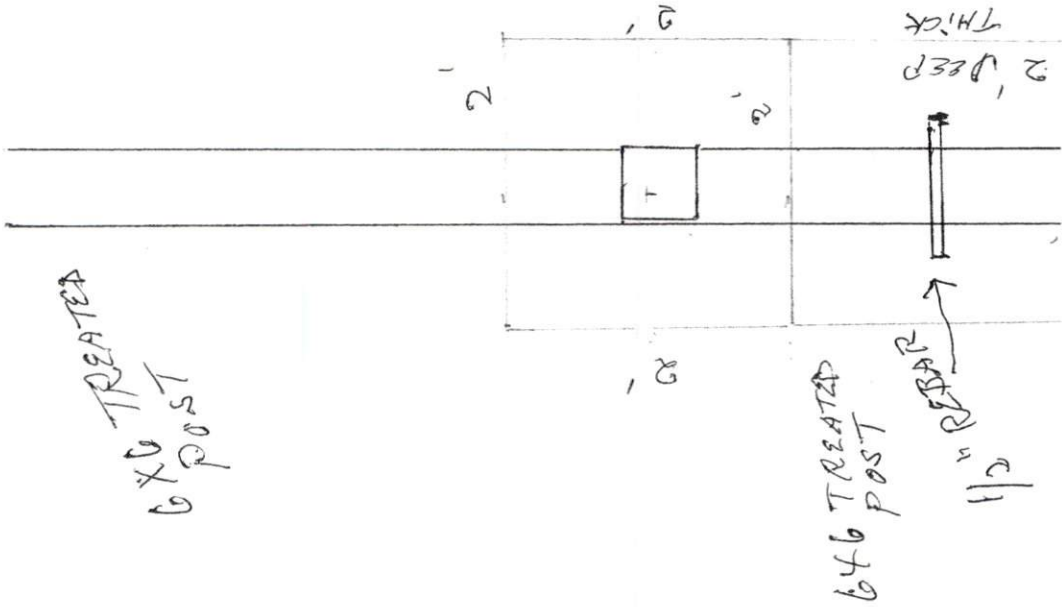
DOUBLE 2x10 BEAM

2x4 30" OC

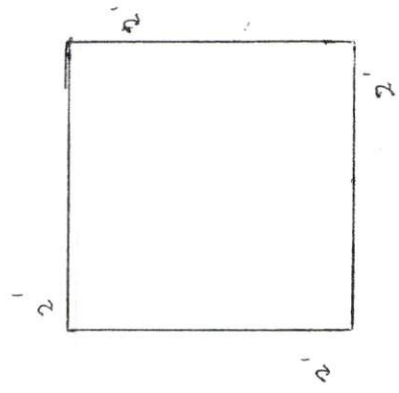
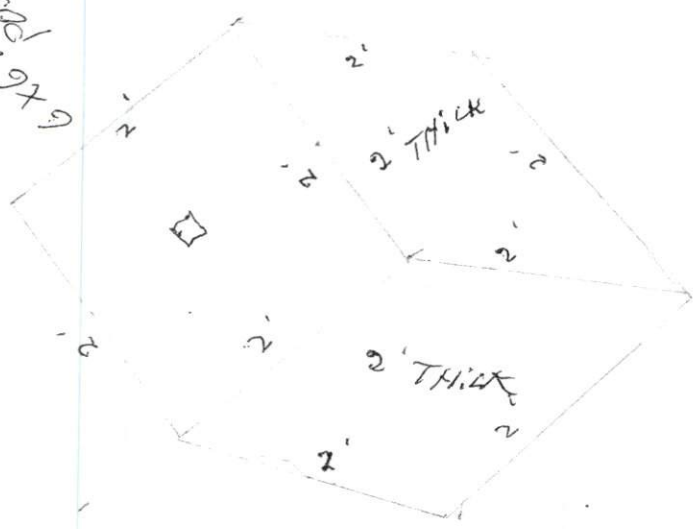
ROOF TRUSSES 24" OC

29 GA. RIB LOC METAL

6x6 TREATED POST
12' OC



6x6 TREATED
POST



$$3\frac{1}{4}'' = 1'$$

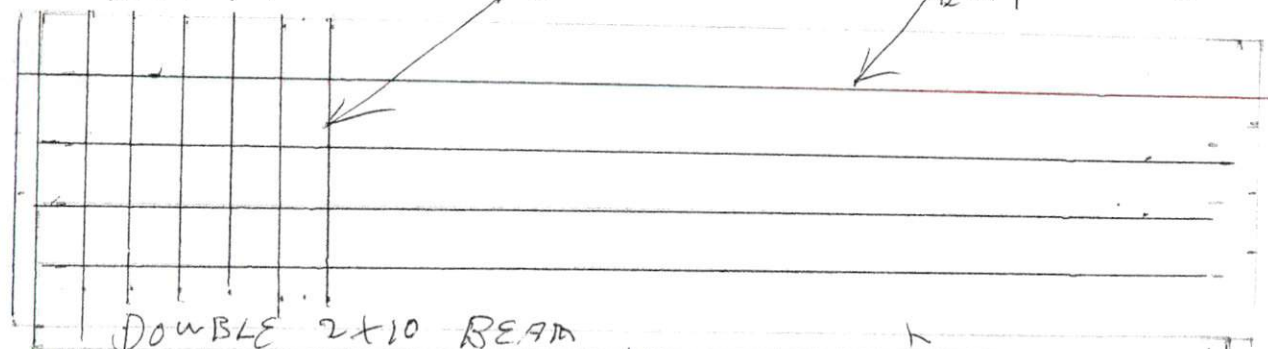
6x6 TREATED POST
12' OC

ROOF TRUSSES
24' OC

29 GA. RIB LOC METAL

ROOF TRUSSES 24" OC

2x4 30" OC



DOUBLE 2x10 BEAM

6x6 TREATED POST
12' OC

2x4 30' OC
ON WALLS

29 GA. METAL

14' 4" H:SH

4" CONCRETE

3000 PSI