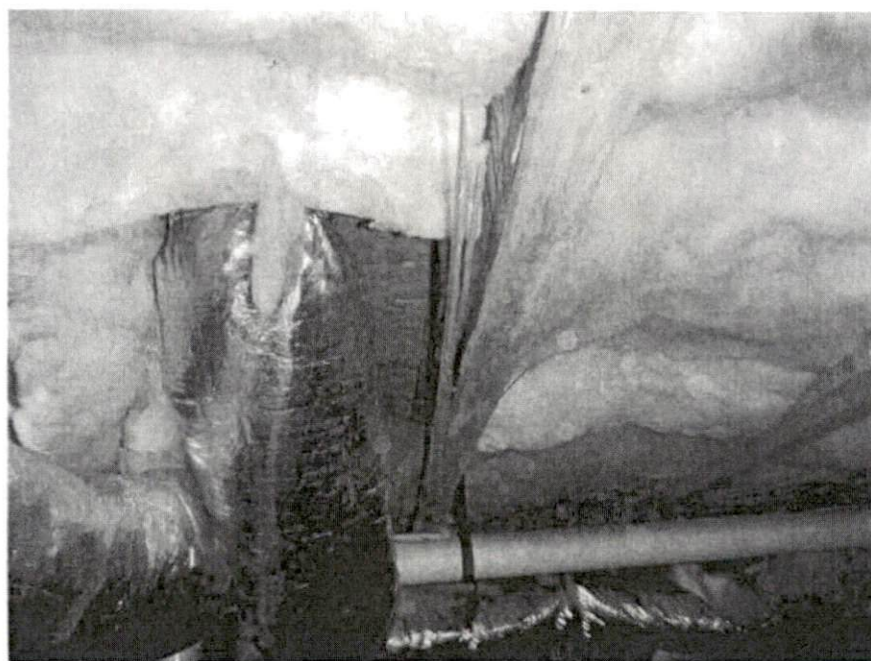


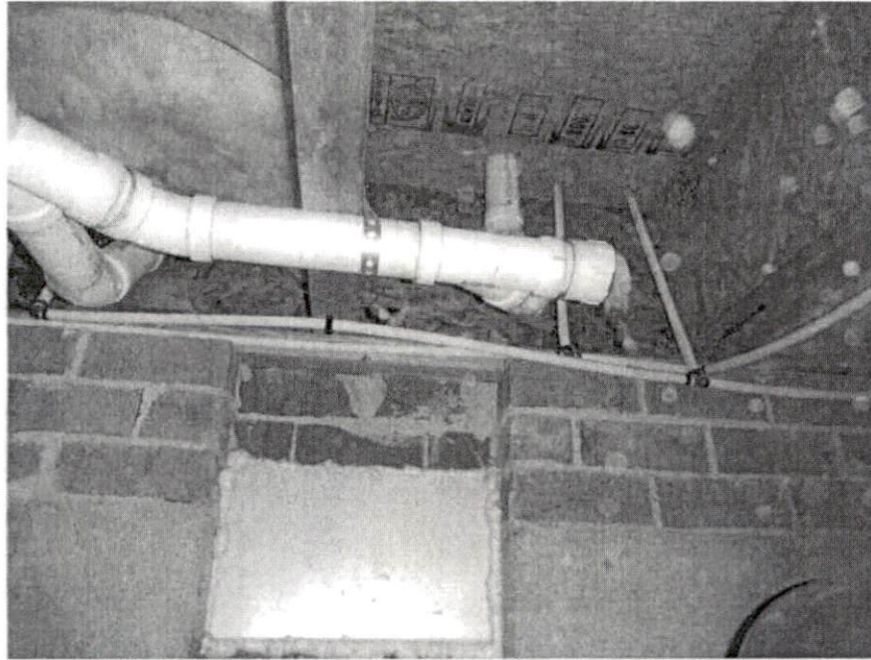
PICTURE ADDENDUM



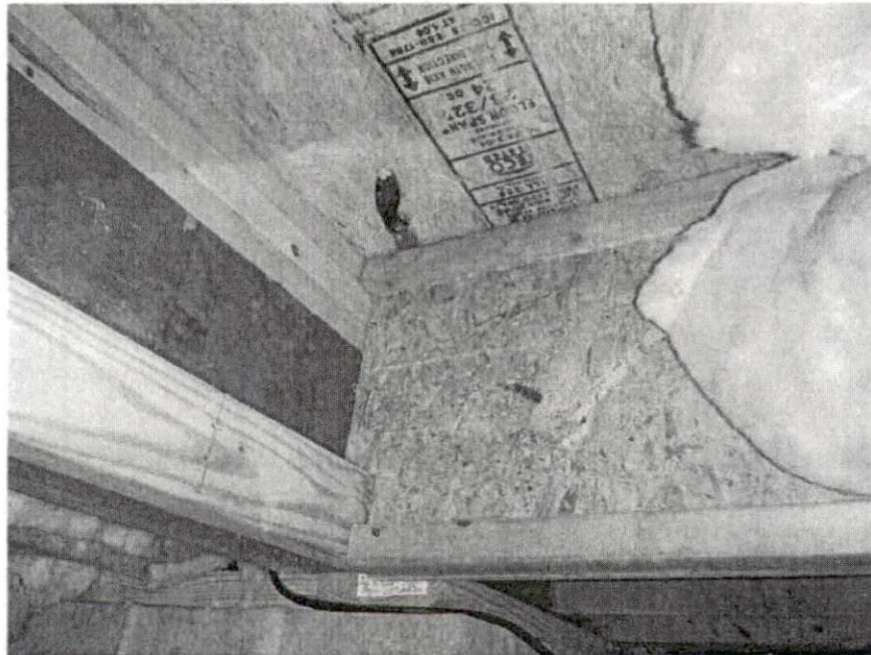
*Picture 1 – 111 Cedar Ln.  
Sanford, NC*



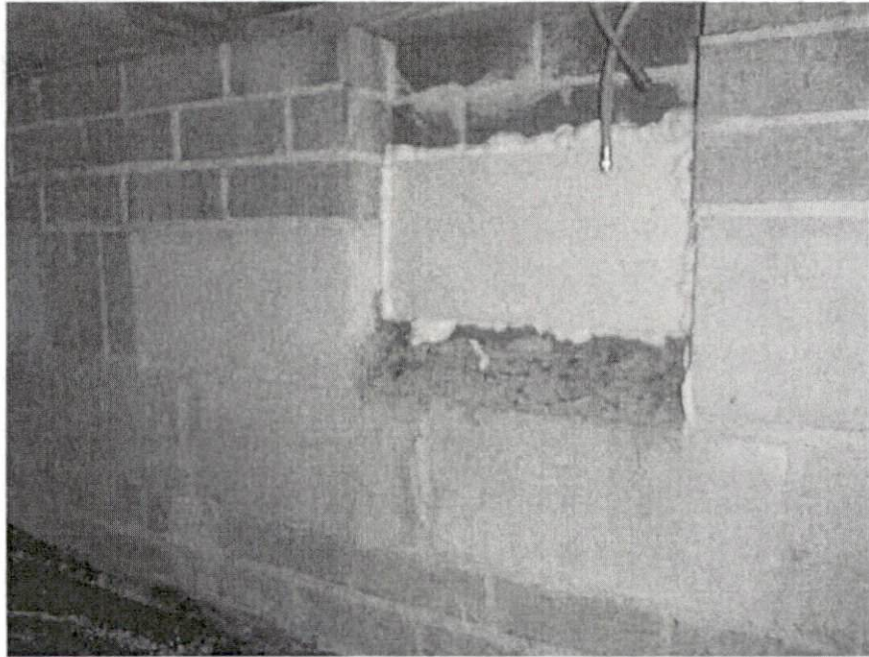
*Picture 2 – I-joint with damaged bottom chord*



*Picture 3 – Joist supported on sill plate over vent opening*



*Picture 4 – Example of notched and improperly supported i-joist at back foundation wall bump-out*



*Picture 5 – Example of sealed perimeter vent in partially closed crawlspace*



*Picture 6 – Standing water at back foundation wall*



*Picture 7 – Inadequately sloped exterior grade at back of home*



*Picture 8 – Example of roof gutter downspout installed for discharge at foundation*