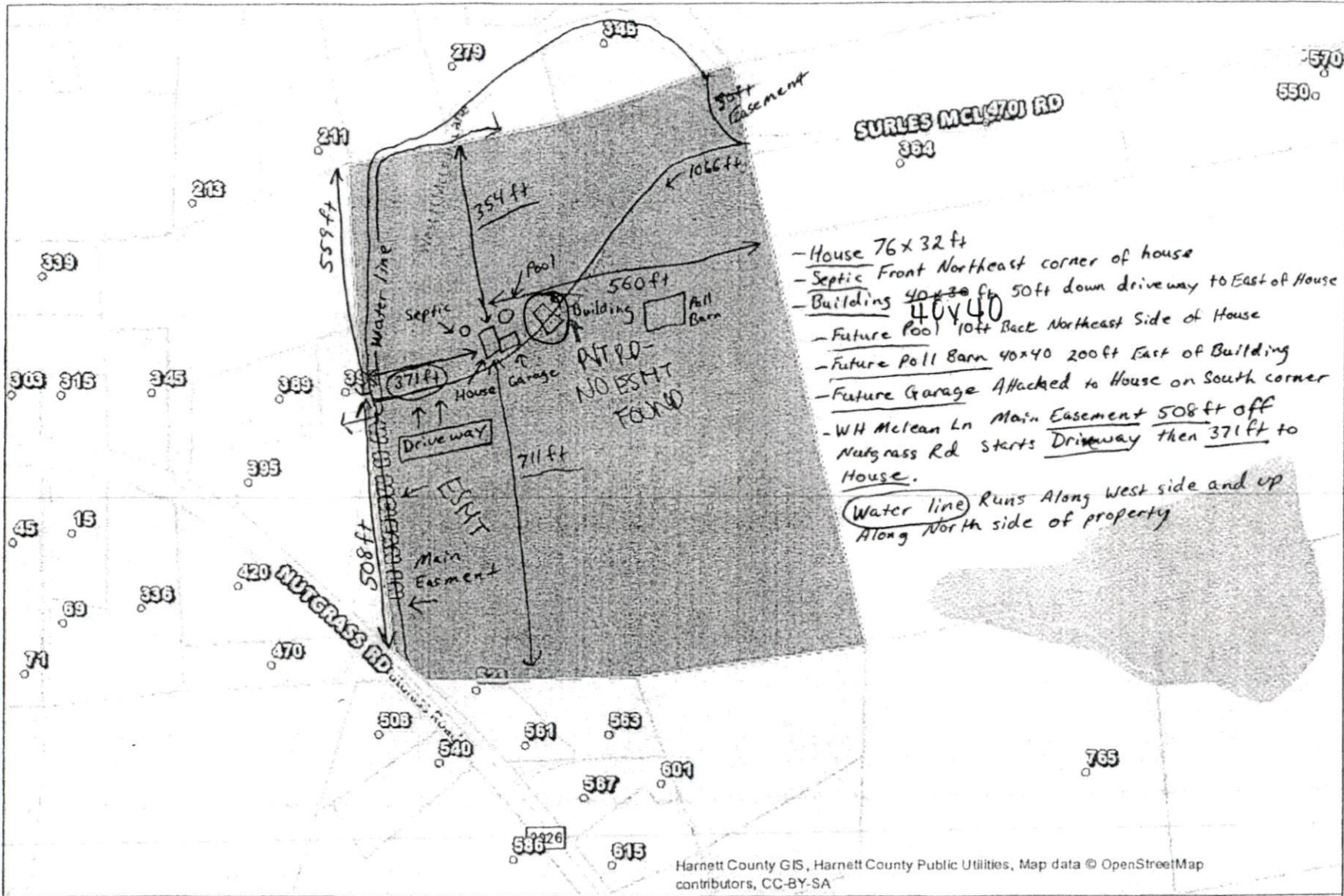


Harnett GIS

NOT FOR LEGAL USE



- House 76 x 32 ft
- Septic Front Northeast corner of house
- Building 40 x 30 ft 50ft down driveway to East of House
- Future Pool 10ft Back Northeast Side of House
- Future Poll Barn 40x40 200ft East of Building
- Future Garage Attached to House on South corner
- Wt Mclean Ln Main Easement 508ft off Nutgrass Rd starts Driveway then 371ft to House.
- (Water line) Runs Along West side and up Along North side of property

Harnett County GIS, Harnett County Public Utilities, Map data © OpenStreetMap contributors, CC-BY-SA



GIS/E-911 Addressing  
November 29, 2021

	Surrounding County Boundaries	<b>Major Roads</b>	<b>Mile_Markers</b>
	City Limits		
	Address Numbers		
	Airport		

