

COMMENTS:

LANDSCAPE POSITIONS

- R-RIDGE
- S-SHOULDER SLOPE
- L-LINEAR SLOPE
- FS-FOOT SLOPE
- N-NOSE SLOPE
- H-HEAD SLOPE
- CC-CONCLAVE SLOPE
- CV-CONVEX SLOPE
- T-TERRACE
- FP-FLOOD PLAN

STRUCTURE

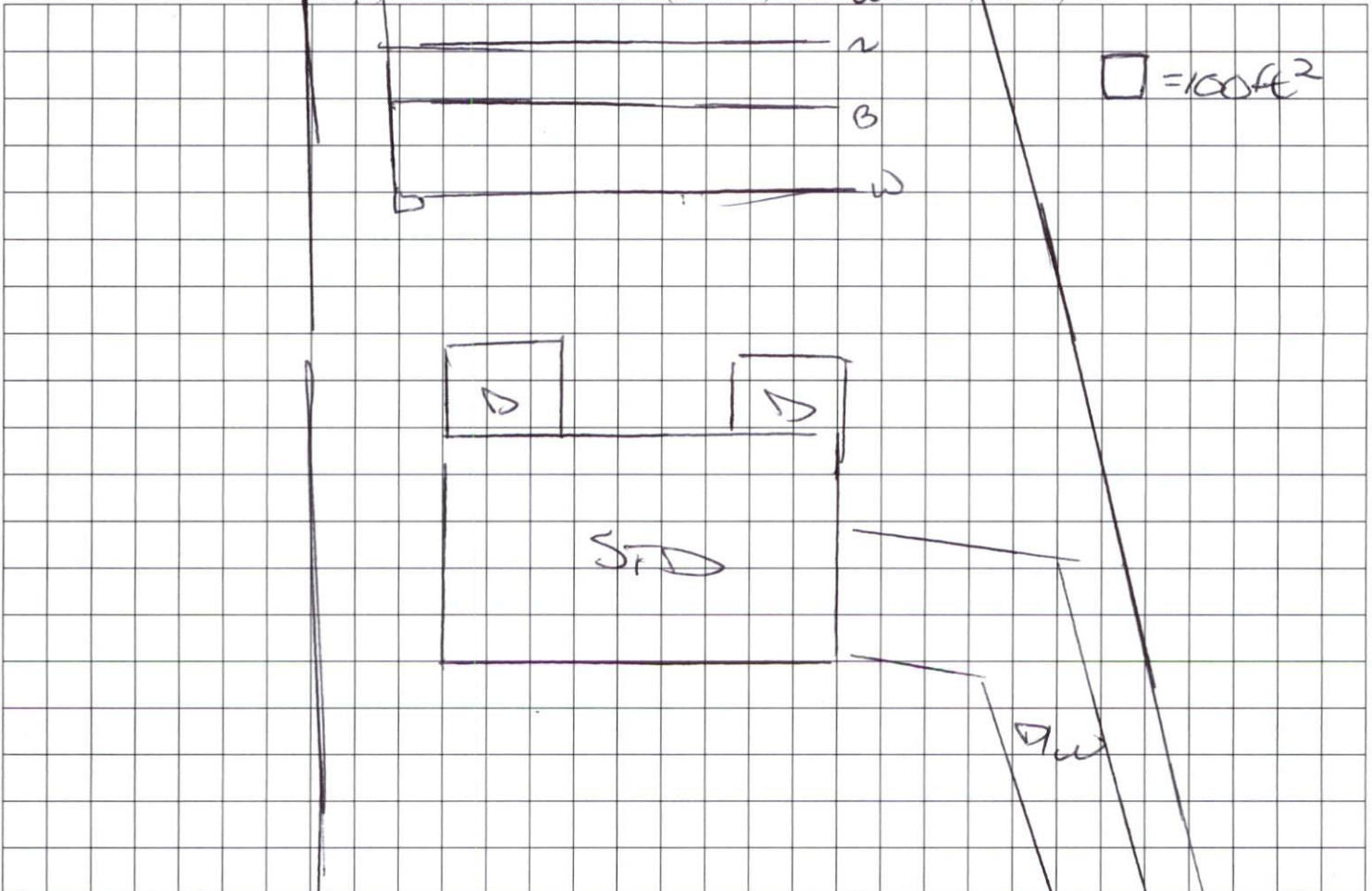
- SG-SINGLE GRAIN
- M-MASSIVE
- CR-CRUMB
- GR-GRANULAR
- SBK-SUBANGULAR BLOCKY
- ABK-ANGULAR BLOCKY
- PL-PLATY
- PR-PRISMATIC

| GROUP | TEXTURES | .1955 LTAR | CONSISTENCE MOIST | WET |
|-------|---|------------|--|--|
| I | S-SAND LS-LOAMY SAND | 1.2 - 0.8 | VFR-VERY FRIABLE FR-FRIABLE | NS-NON-STICKY SS-SLIGHTLY STICKY |
| II | SL-SANDY LOAM L-LOAM | 0.8 - 0.6 | FI-FIRM VFI-VERY FIRM EFI-EXTREMELY FIRM | S-STICKY VS-VERY STICKY NP-NON-PLASTIC SP-SLIGHTLY STICKY |
| III | SI-SILT SIL-SILT LOAM CL-CLAY LOAM SCL-SANDY CLAY LOAM | 0.6 - 0.3 | | P-PLASTIC VP-VERY PLASTIC |
| IV | SIC-SILTY CLAY C-CLAY SC-SANDY CLAY | 0.4 - 0.1 | | |

MINERALOGY
SLIGHTLY EXPANSIVE
EXPANSIVE



Show profile locations and other site features (dimensions, references or benchmark, and North)



NC 42