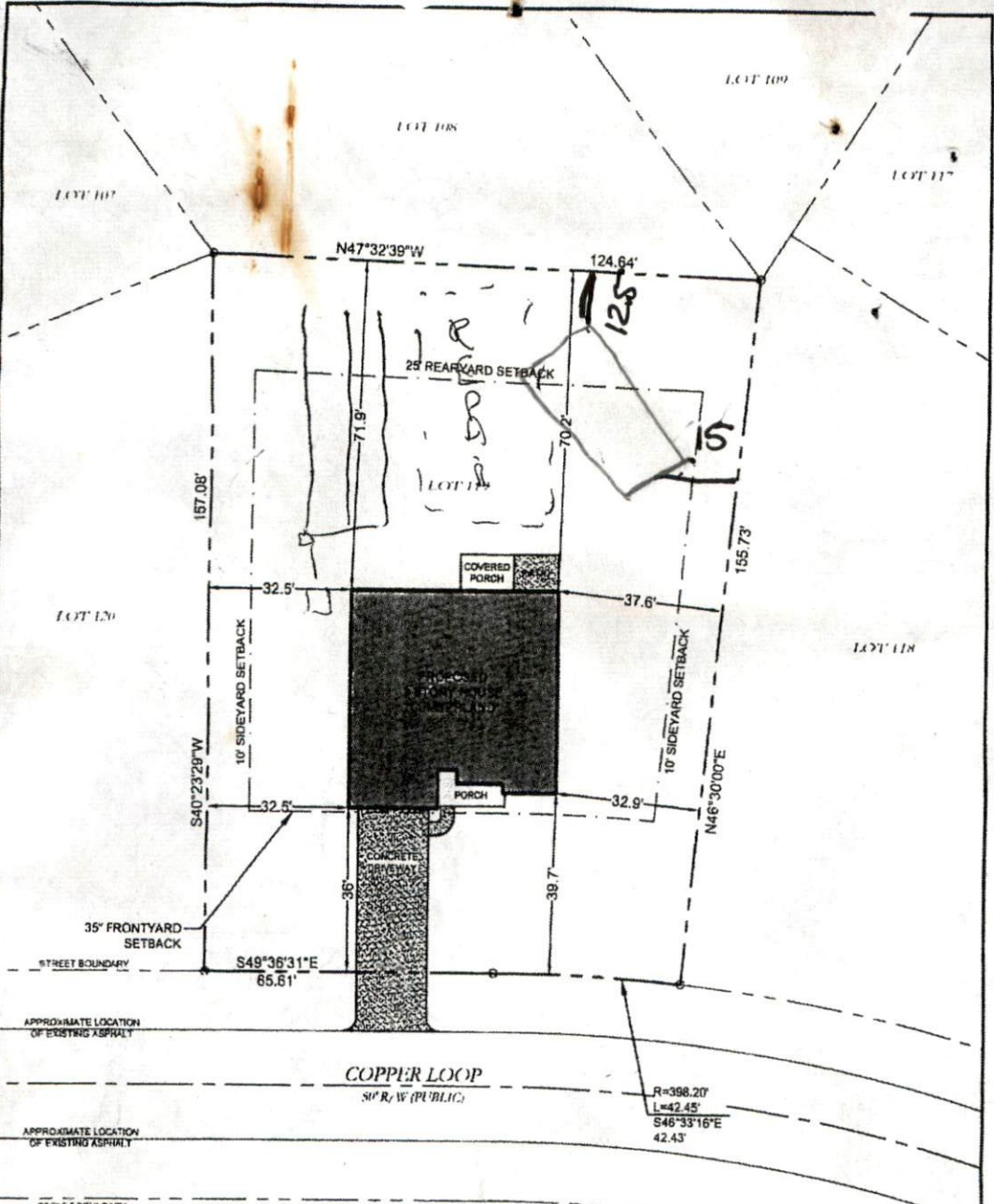


0-28 GS S.F.
 0-28 OS S.F.
 3x50' (3x24')



SITE PLAN APPROVAL
 DISTRICT RA20R USE SFD
 #BEDROOMS 4

LOT DATA
 PAR ID: 9586-99-2646
 ZONING DISTRICT: RA-20R (HARNETT CO)
 LOT AREA = 18,071± SQ. FT. OR 0.41± ACRE
 8.12.14 [Signature]

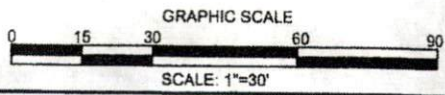
IMPERVIOUS SURFACE AREA FOR THIS LOT = 3,188± SQ. FT.
 HOUSE = 2,112± SQ. FT.
 CONCRETE DRIVE = 788± SQ. FT.
 FRONT PORCH = 88± SQ. FT.
 REAR PORCH = 96± SQ. FT.
 PATIO = 80± SQ. FT.
 SIDEWALK = 25± SQ. FT.

PARCEL IS LOCATED IN FLOOD ZONE X, AS DETERMINED BY FEMA FLOOD PANEL 3720958800J, DATED OCTOBER 3, 2008.

PREPARED FOR:
 H&H ONSITE HOMES
 2919 BREEZEWOOD AVE
 SUITE 300
 FAYETTEVILLE, NC 28303



PRELIMINARY DRAWING
 DO NOT USE FOR
 CONSTRUCTION,
 RECORDATION,
 CONVEYANCES, OR
 SALES.



THE SUMMIT, SECTION 3, MAP BOOK 2006, PAGE 1118

PARAMOUNTE
 ENGINEERING INC
 9111 Olander Drive, N.L., 28401 910-791-6707 - NC License # C-2846

Date :	8/4/14
Scale:	1"=30'
Drawn :	GLM
Chk:	DME
Proj. No:	14255.PE-110

PROPOSED SITE PLAN
 LOT 119
 29 COPPER LOOP
 BARBEQUE TOWNSHIP
 HARNETT COUNTY, NC