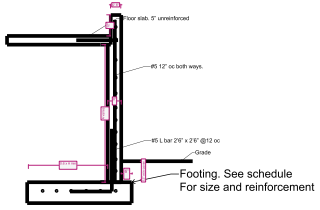
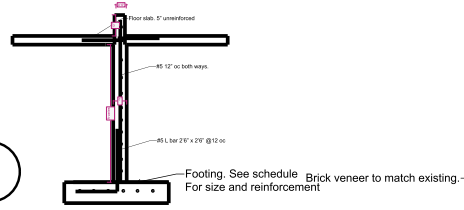


Face board and soffit details  
To match existing house

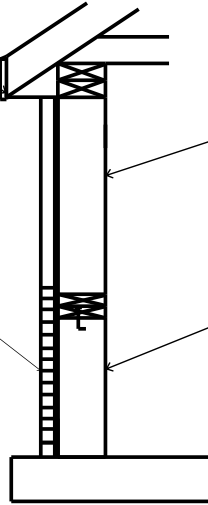
1



2



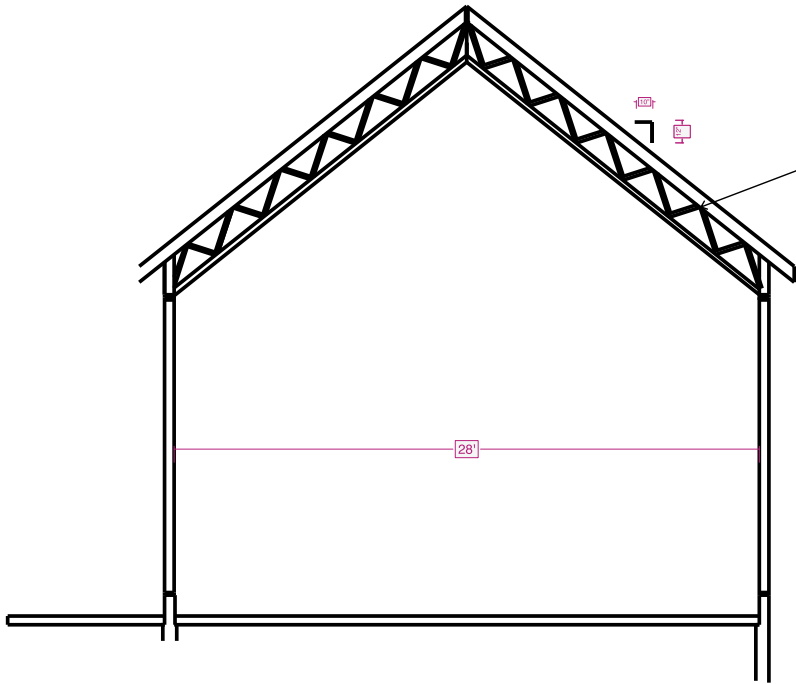
5



2x6@ 16"oc stud wall r20 insulation  
Work shop interior painted metal  
Storage 1/2 " drywall

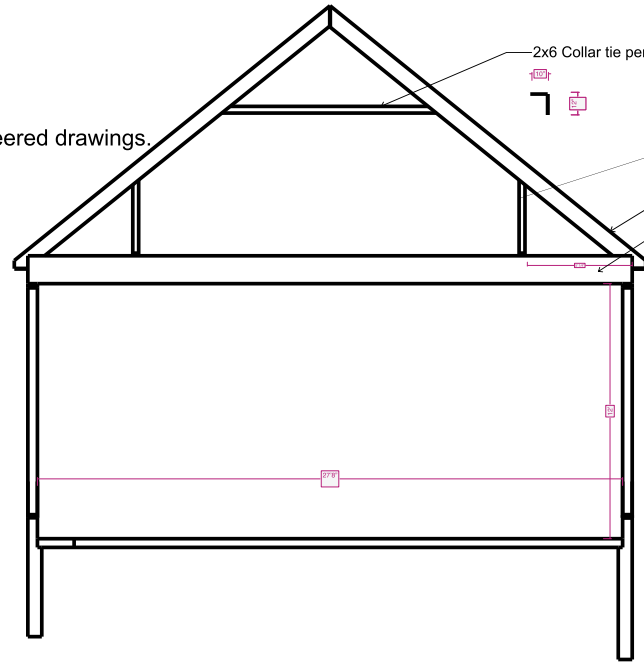
Foundation wall  
See detail

3



Parallel Cord truss. See attached engineered drawings.

4



2x6 Collar tie per code.  
2x8 SPF #2 Rafter @ 16oc  
Truss Joist see attached engineered drawings.  
3/4" T&G plywood