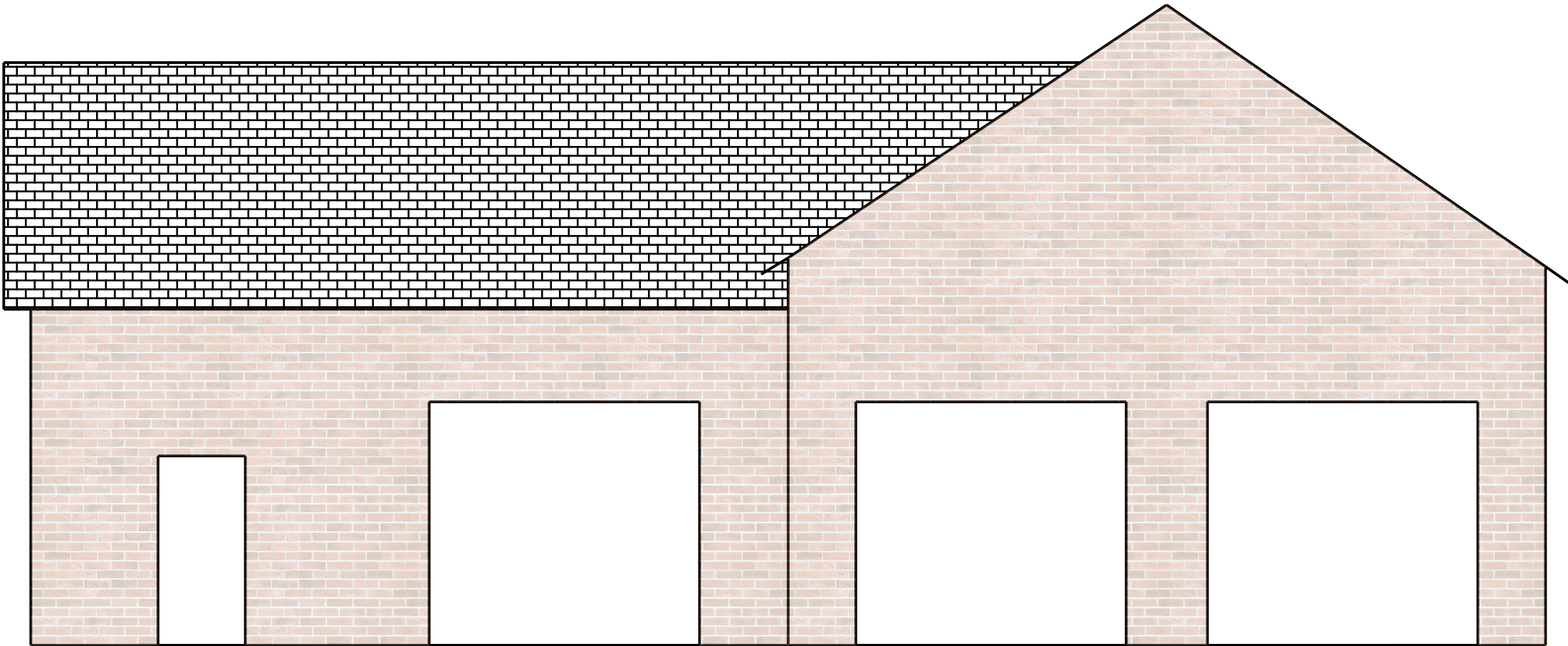
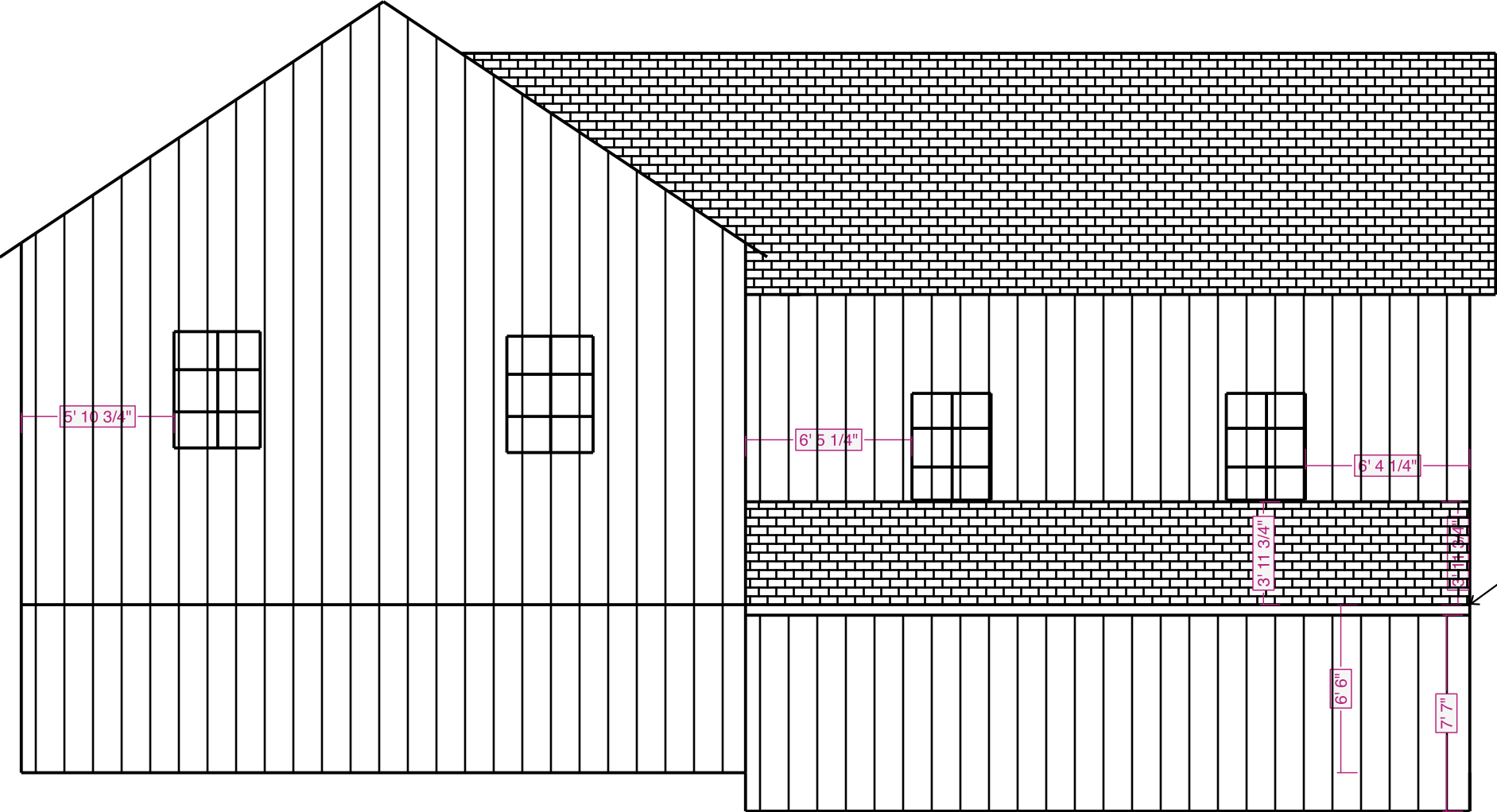
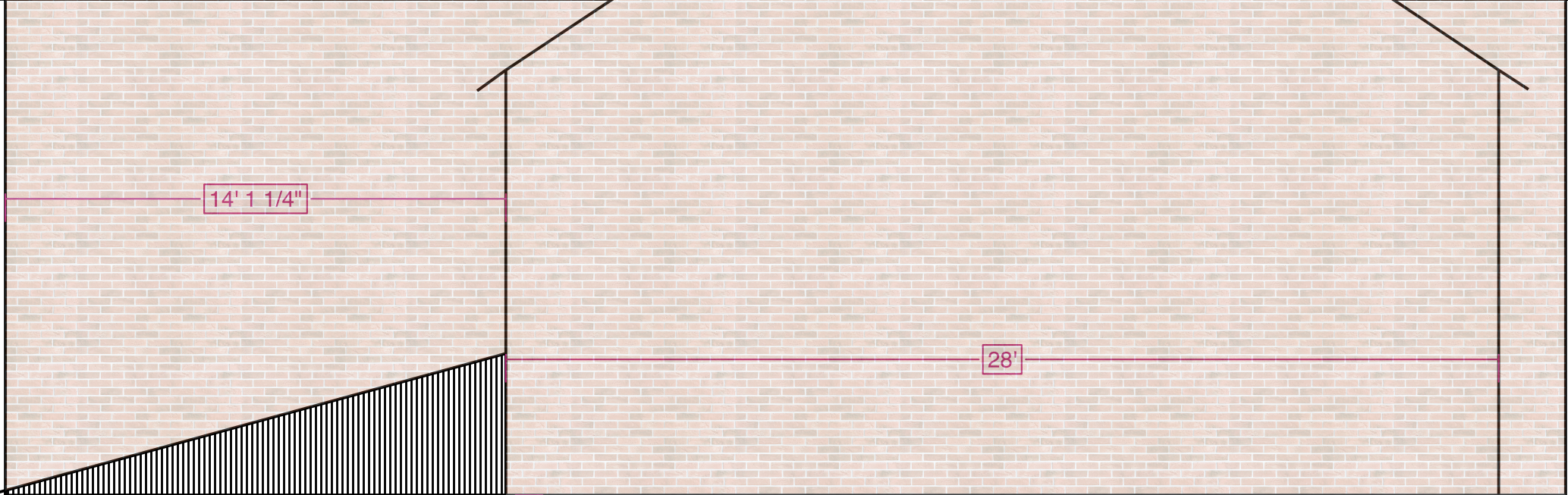
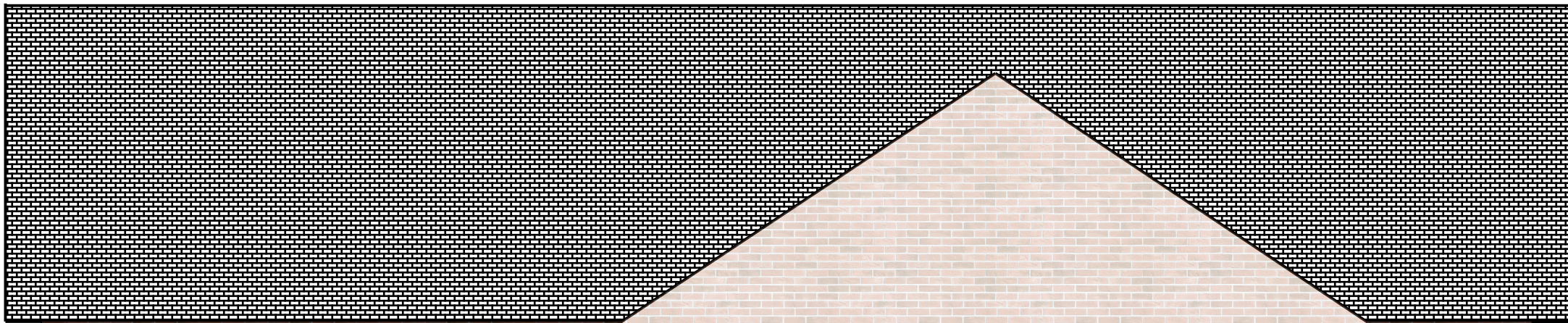


See Notes





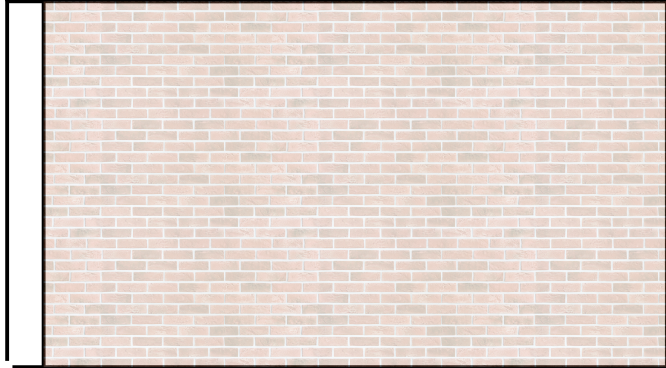
Finish Floor

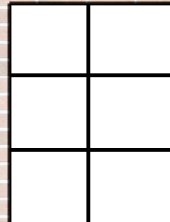
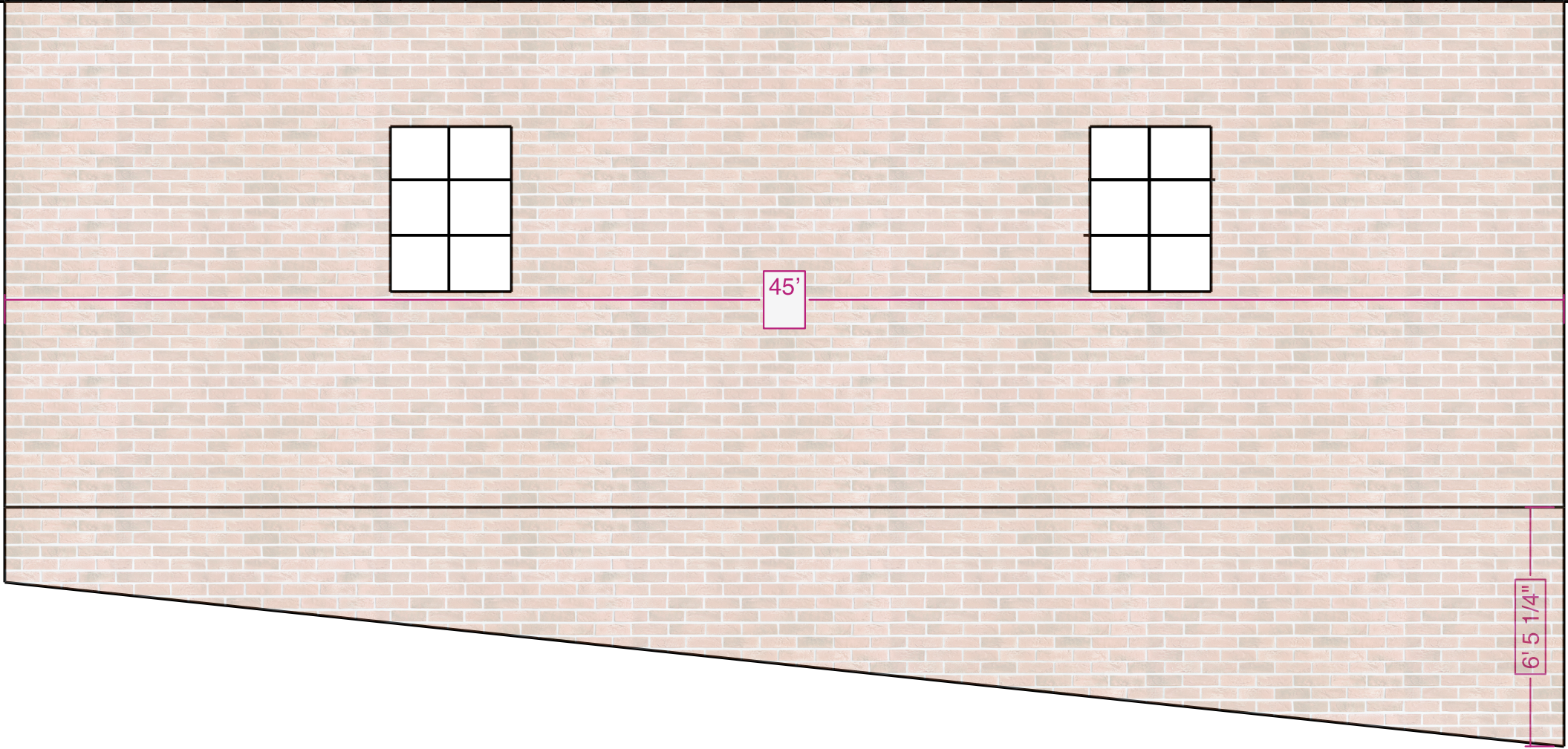
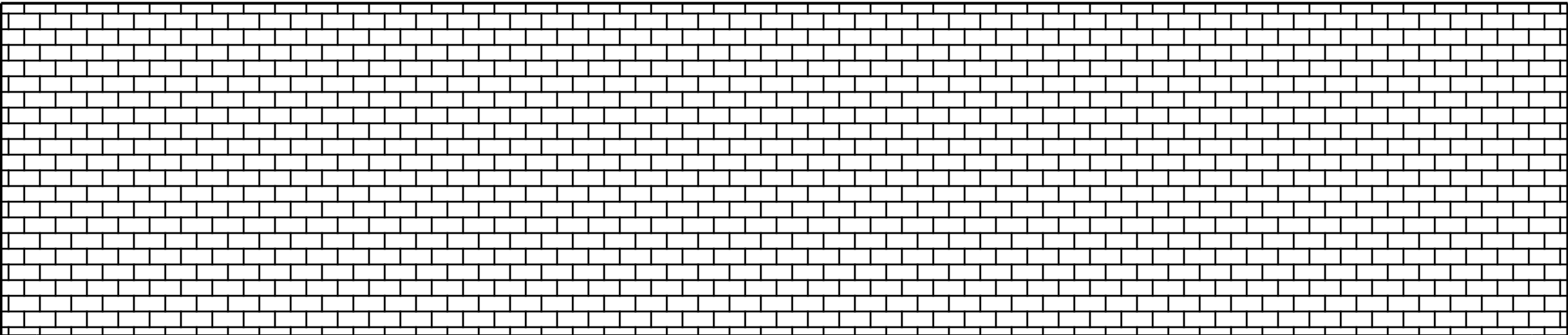


14' 1 1/4"

28'

7' 10"





45'

6' 5 1/4"

14'
Open Lean to equipment storage
Roof only.

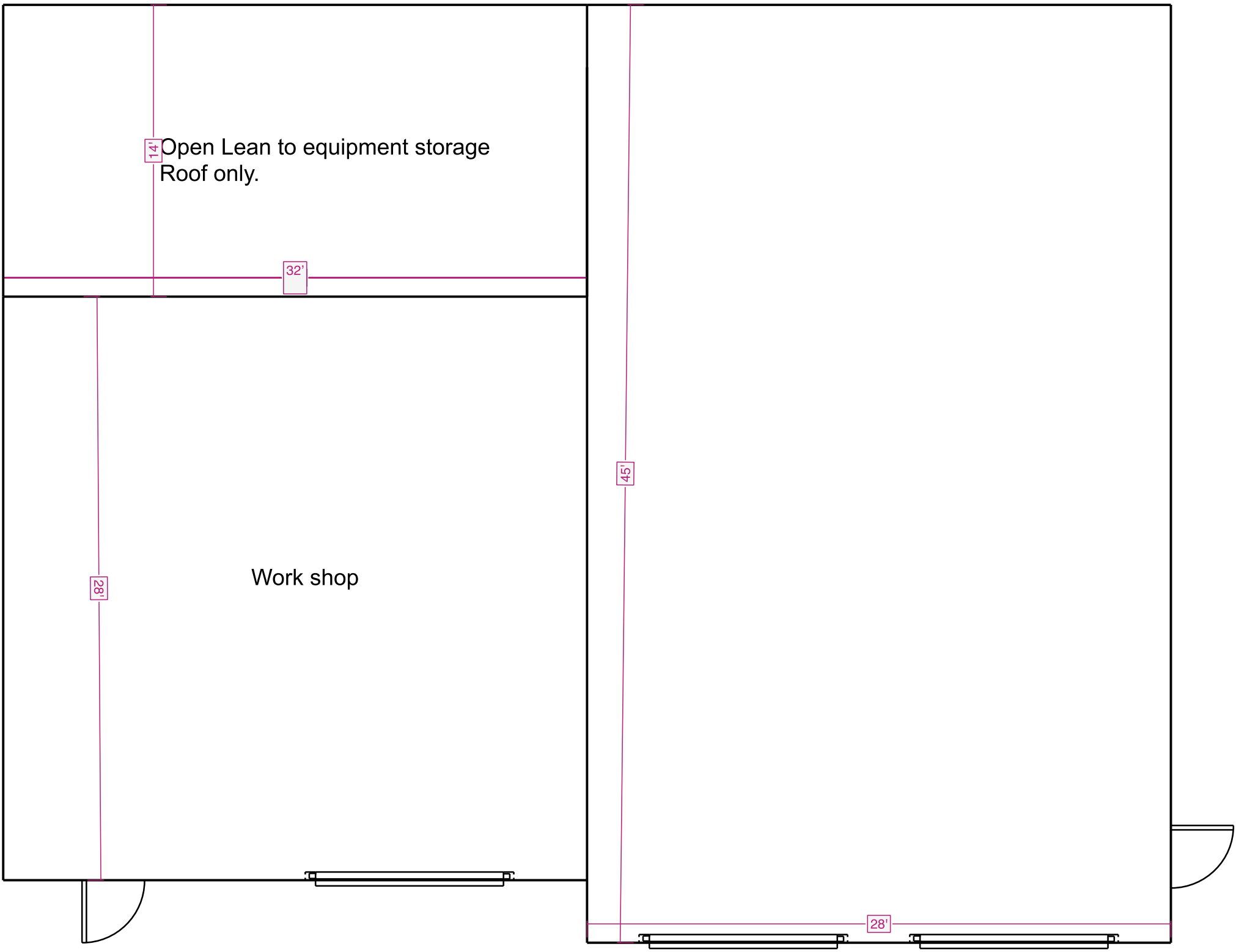
32'

18'

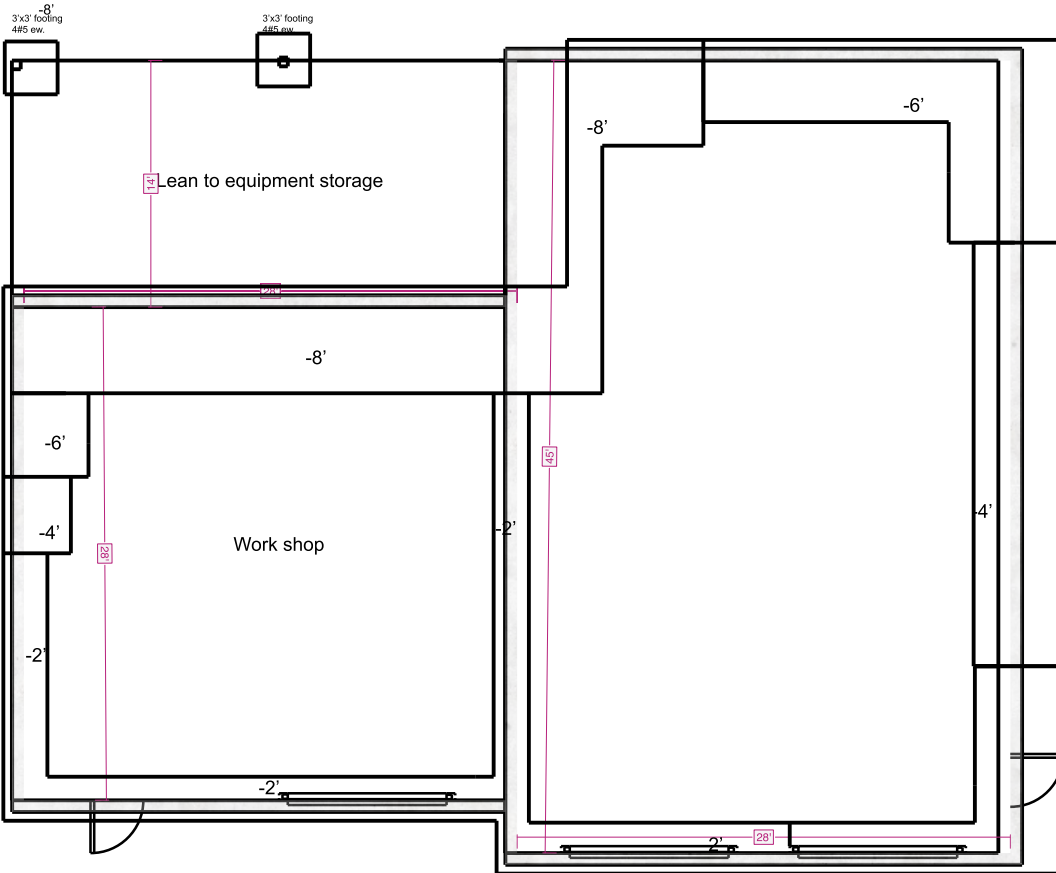
Work shop

45'

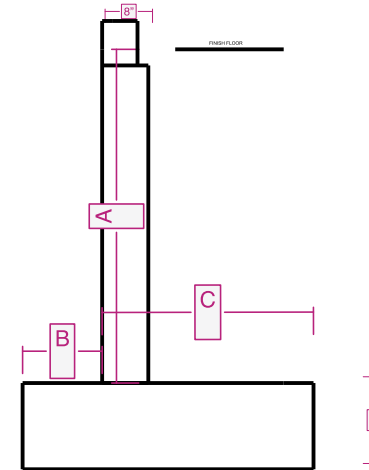
28'



Footing depths/ step
 Locations are approximate
 Contractor to insure min 12"
 ground cover at all footings



5" unreinforced concrete slab
 Saw cuts at 12 foot max



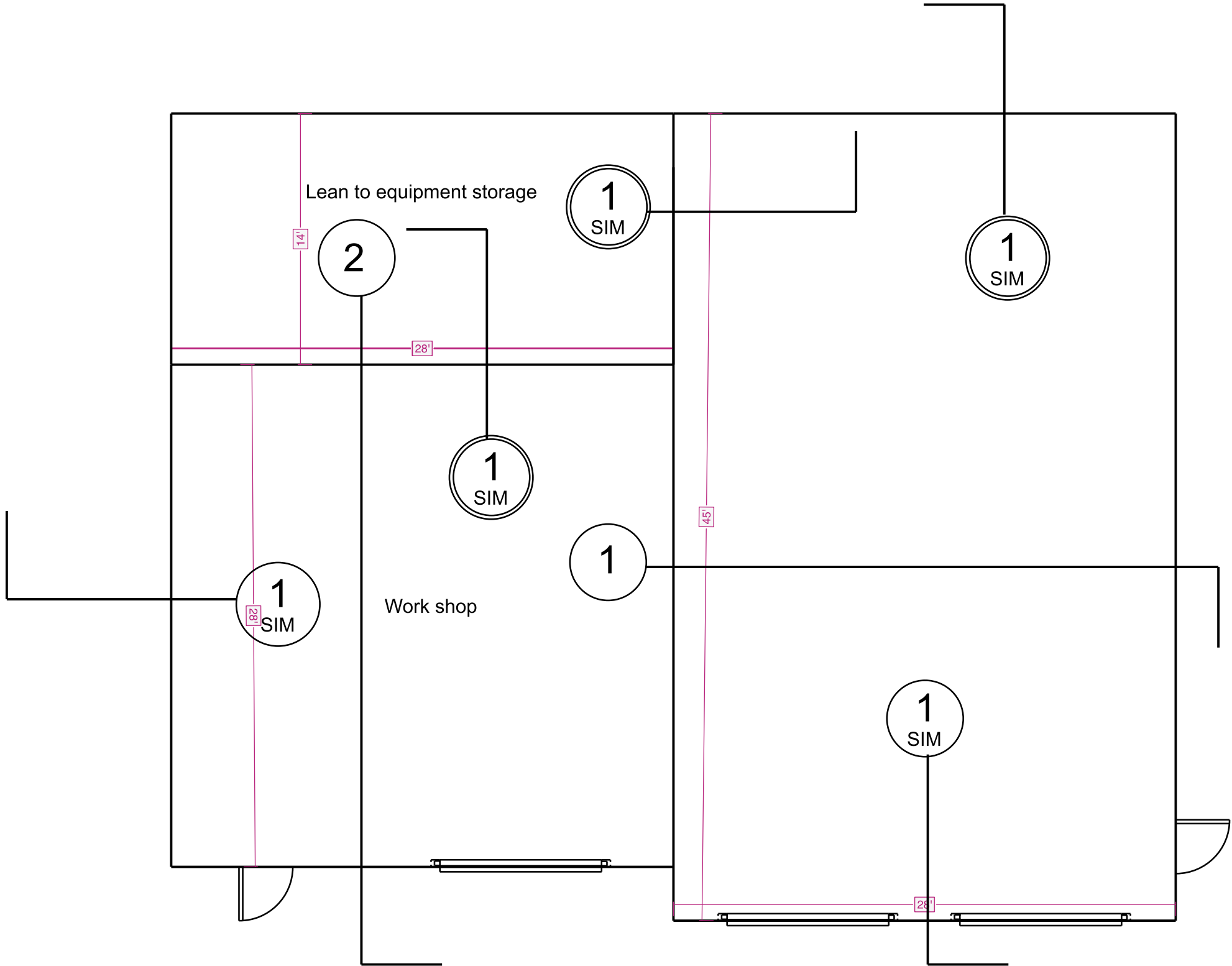
2018 NCRC Table
 404.1.2 may also be
 used for design. This
 table exceeds code
 minimums.

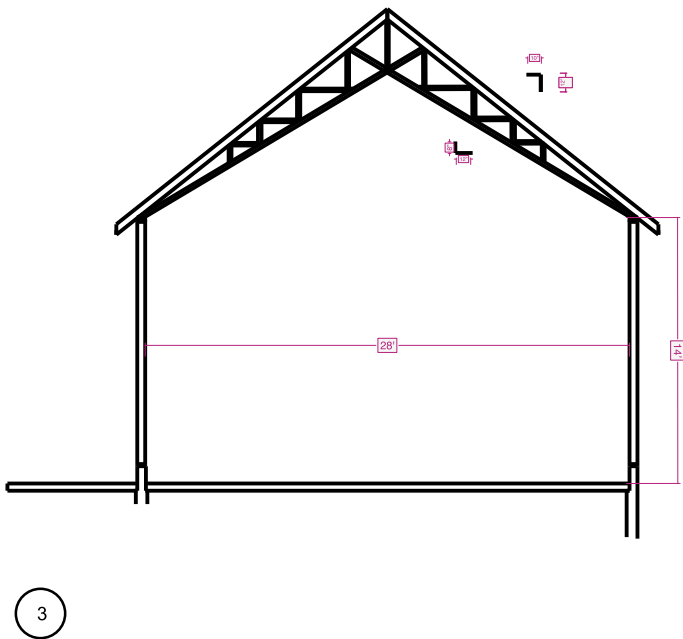
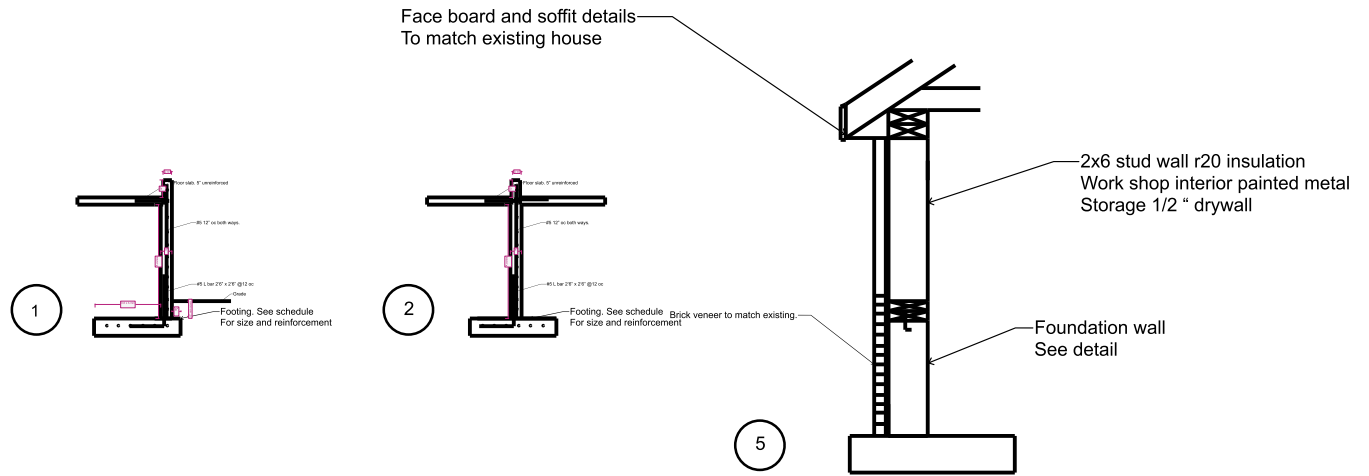
RETAINING FOOTINGS

A	B	C	Footing T&B Traverse bars #5@ 10"	Wall
2'	6"	2'0"	3x#5	#5@12"
4'	1'	3'0"	4x#5	#5@12"
6'	1'6"	4'6"	6x#5	#5@10"
8'	2'6"	4'6"	7x#5	#5@10" _{EF}

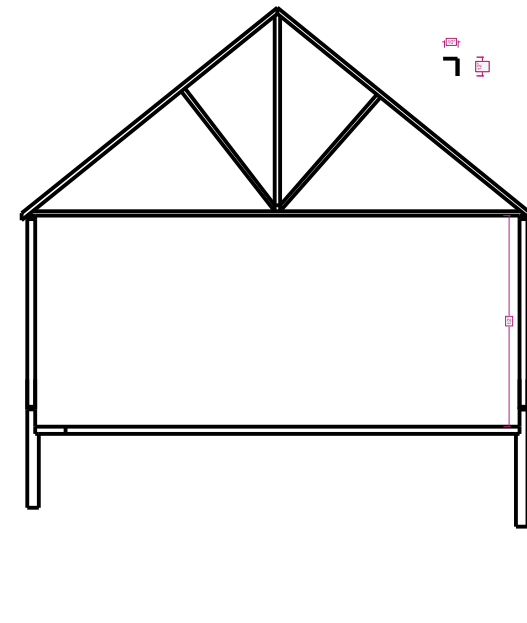
UNRETAINING FOOTINGS

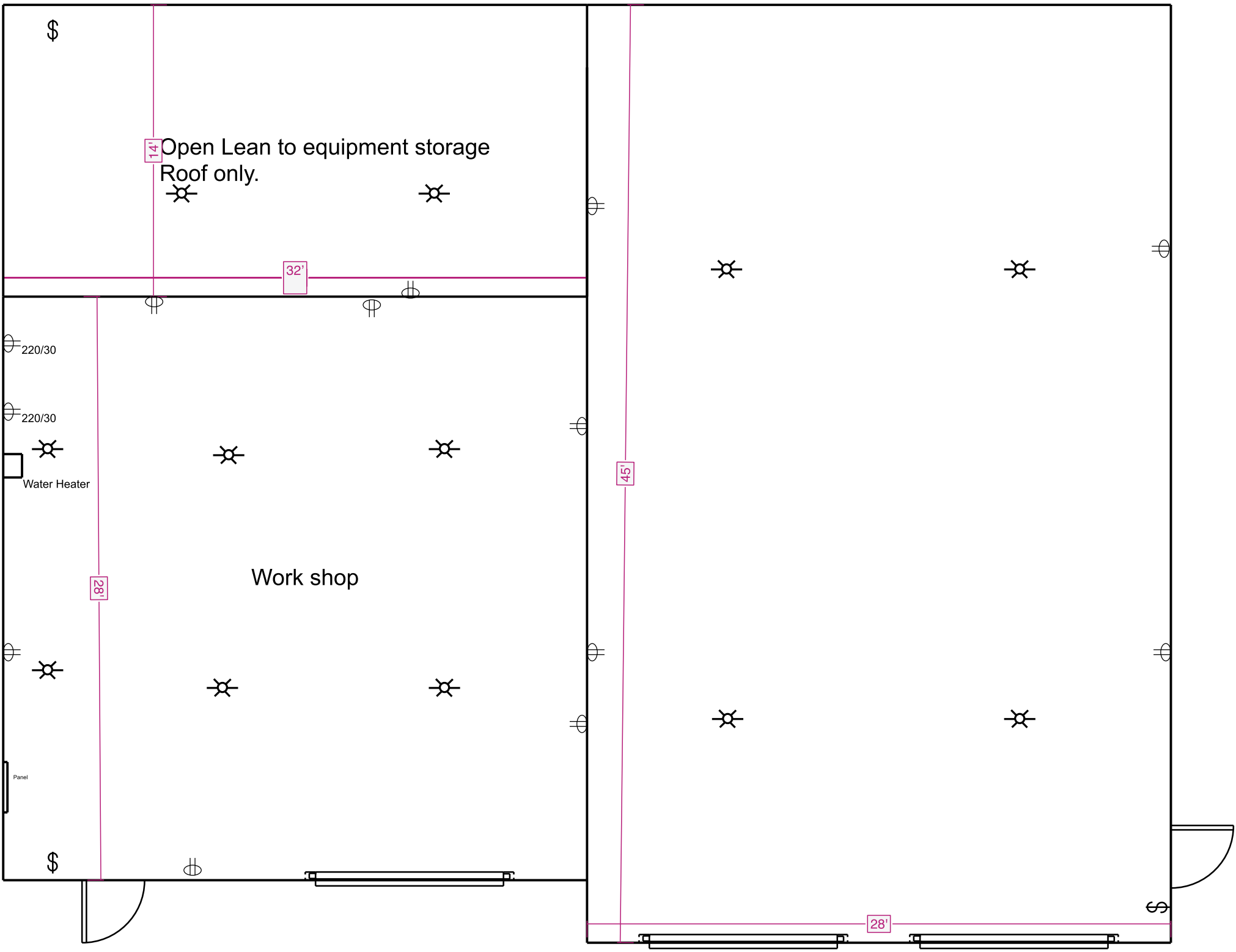
2'	8"	1'4"	3#5	#5 @10"
----	----	------	-----	---------





Provide
engineered truss
drawings at first
inspection.





\$

14' Open Lean to equipment storage
Roof only.

32'

18'

45'

28'

220/30

220/30

Water Heater

Work shop

Panel

\$

\$