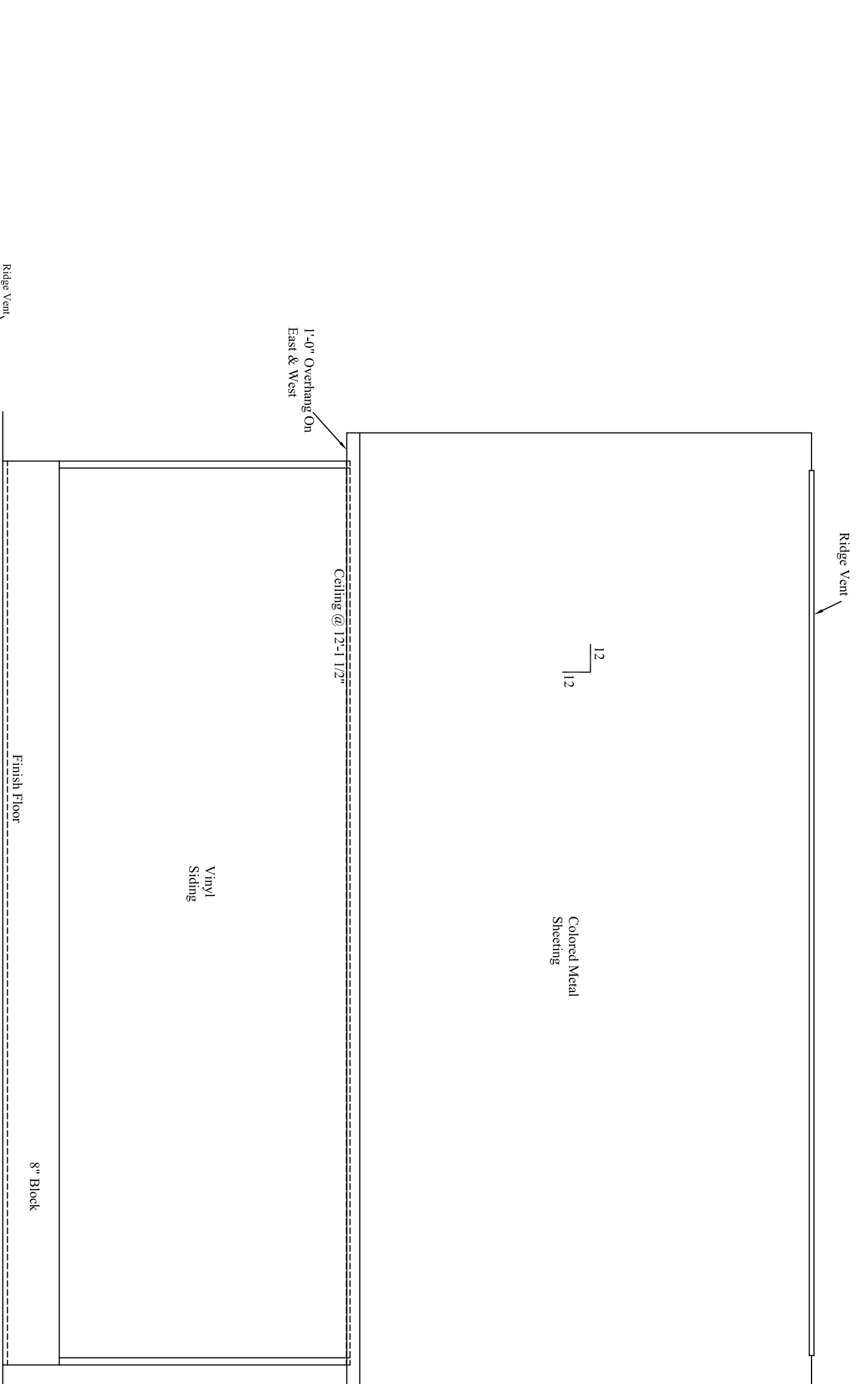
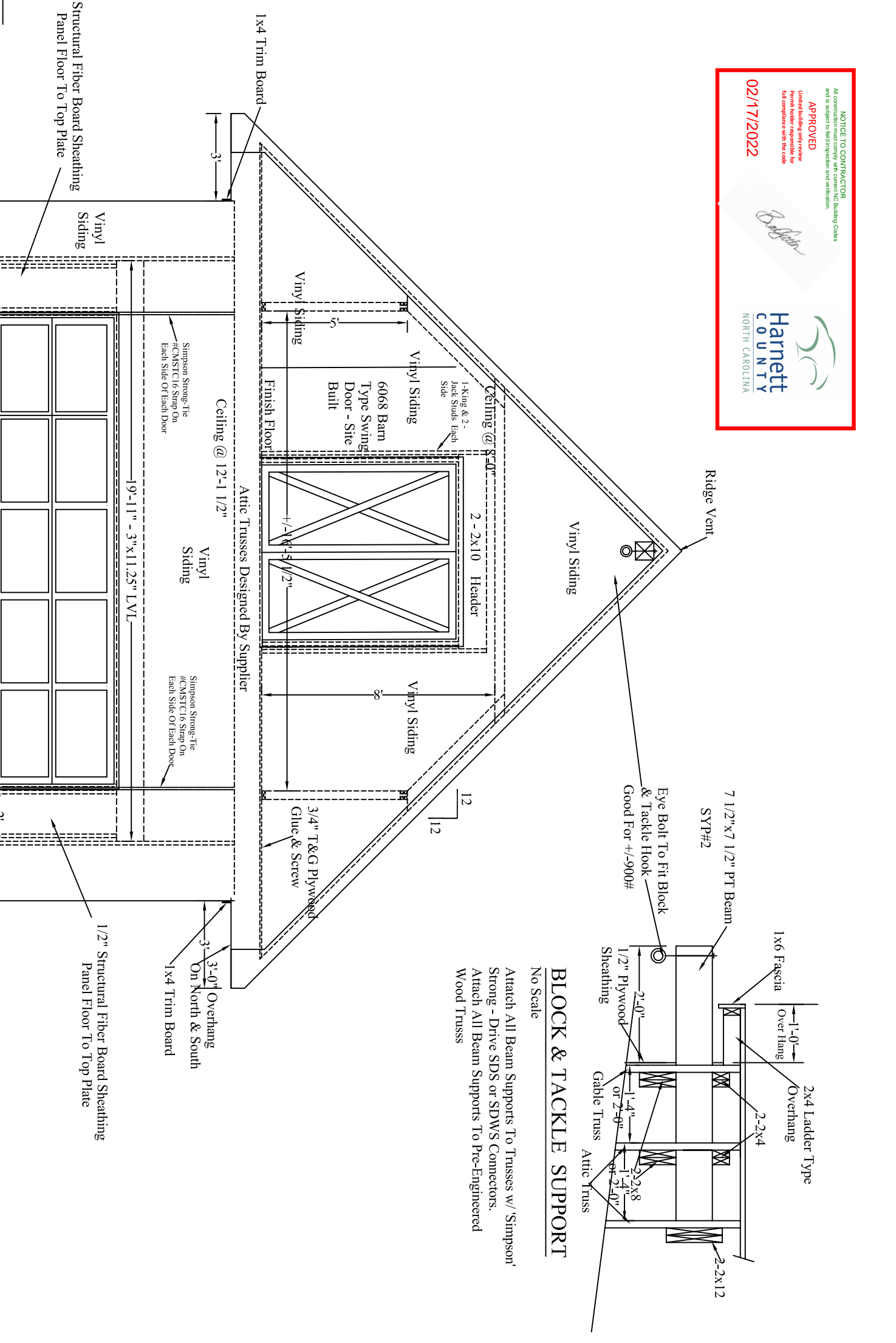


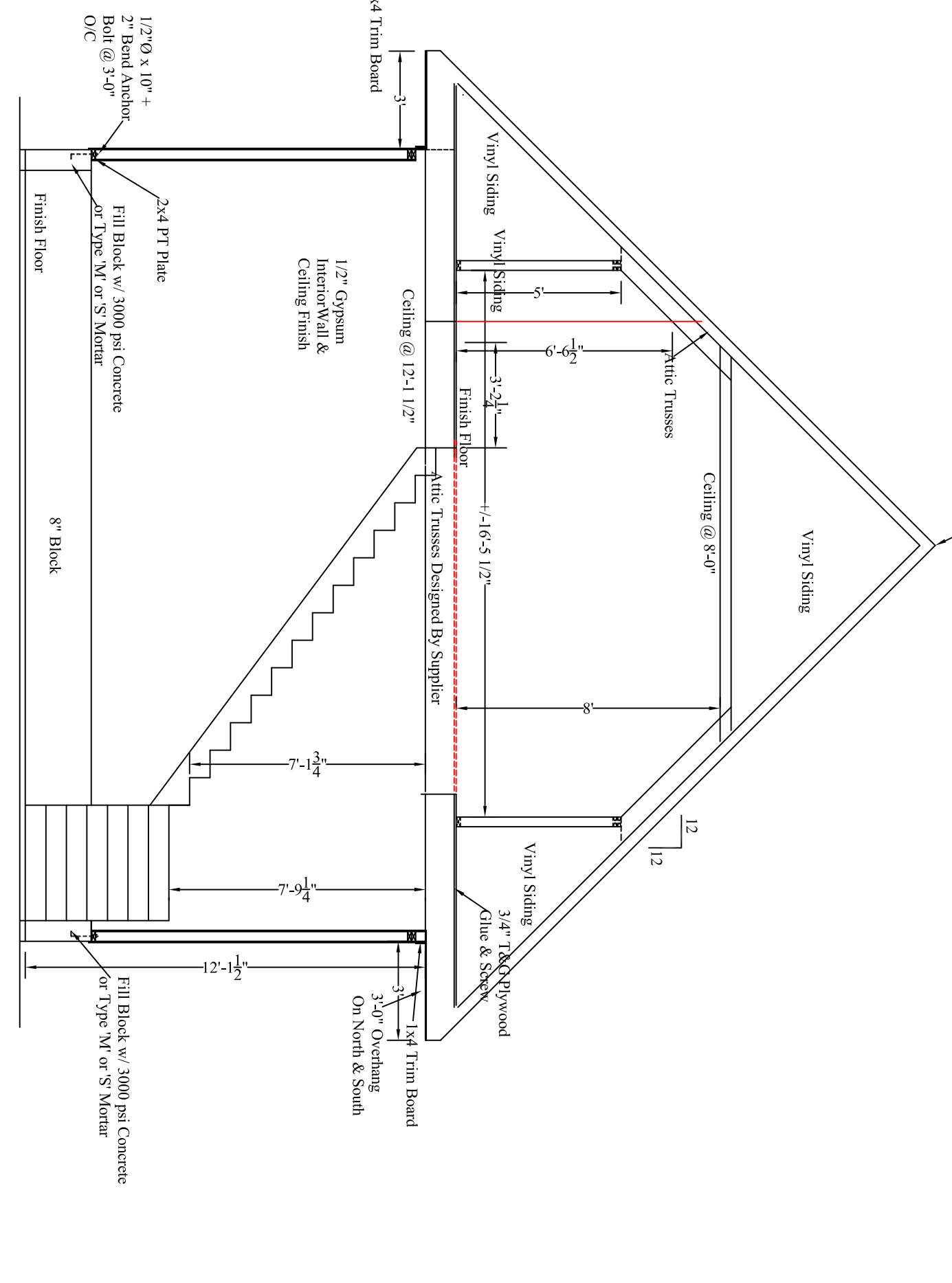
SOUTH SIDE ELEVATION
Scale: 1/4" = 1'-0"



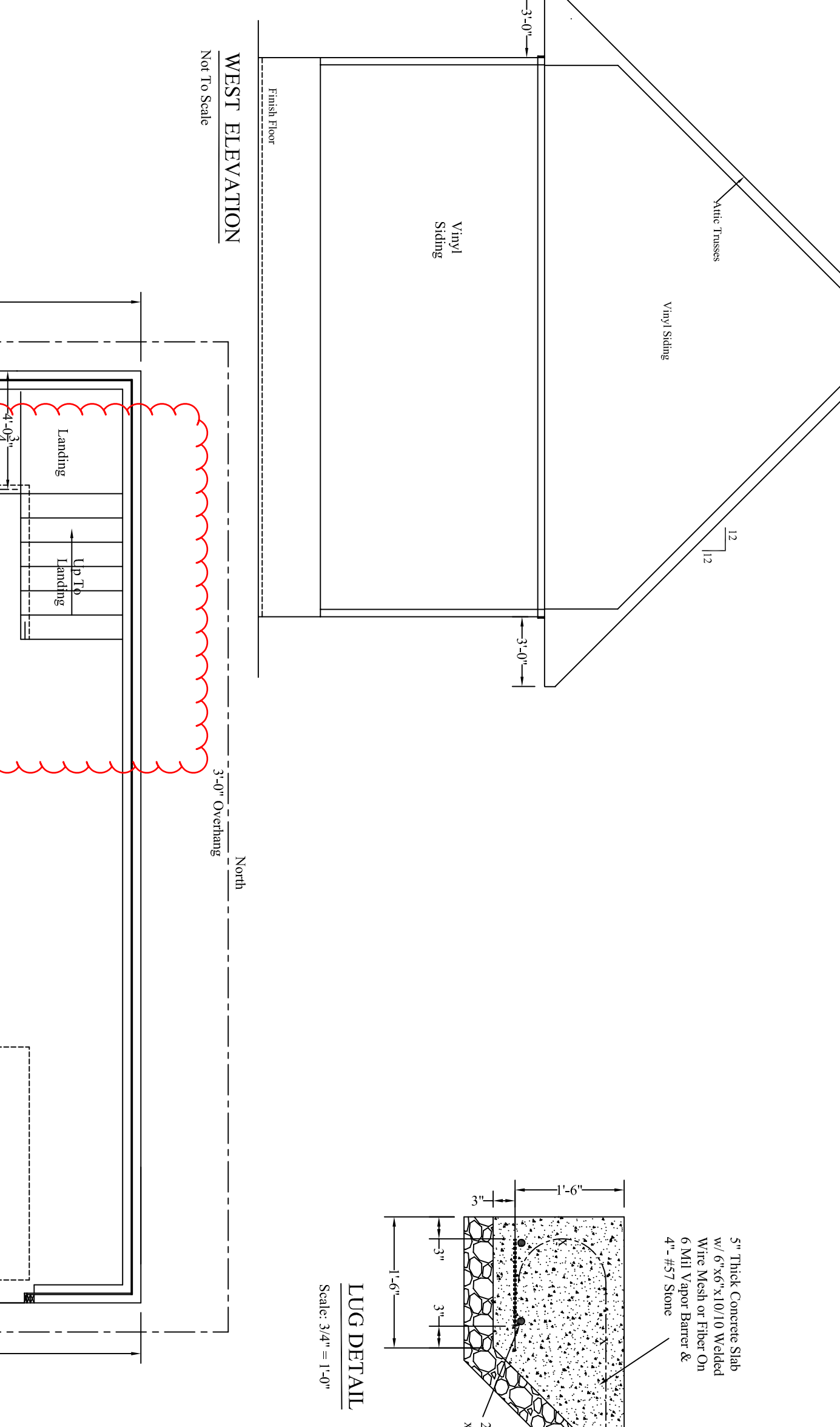
NORTH SIDE ELEVATION
Scale: 1/4" = 1'-0"



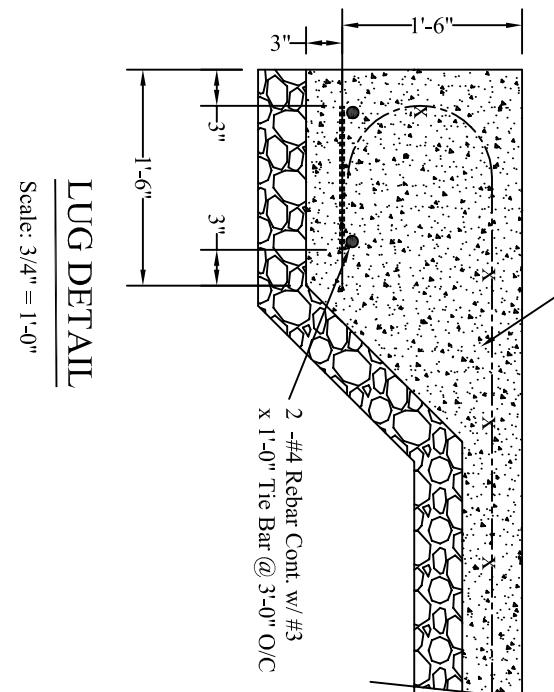
EAST ELEVATION
Scale: 1/4" = 1'-0"



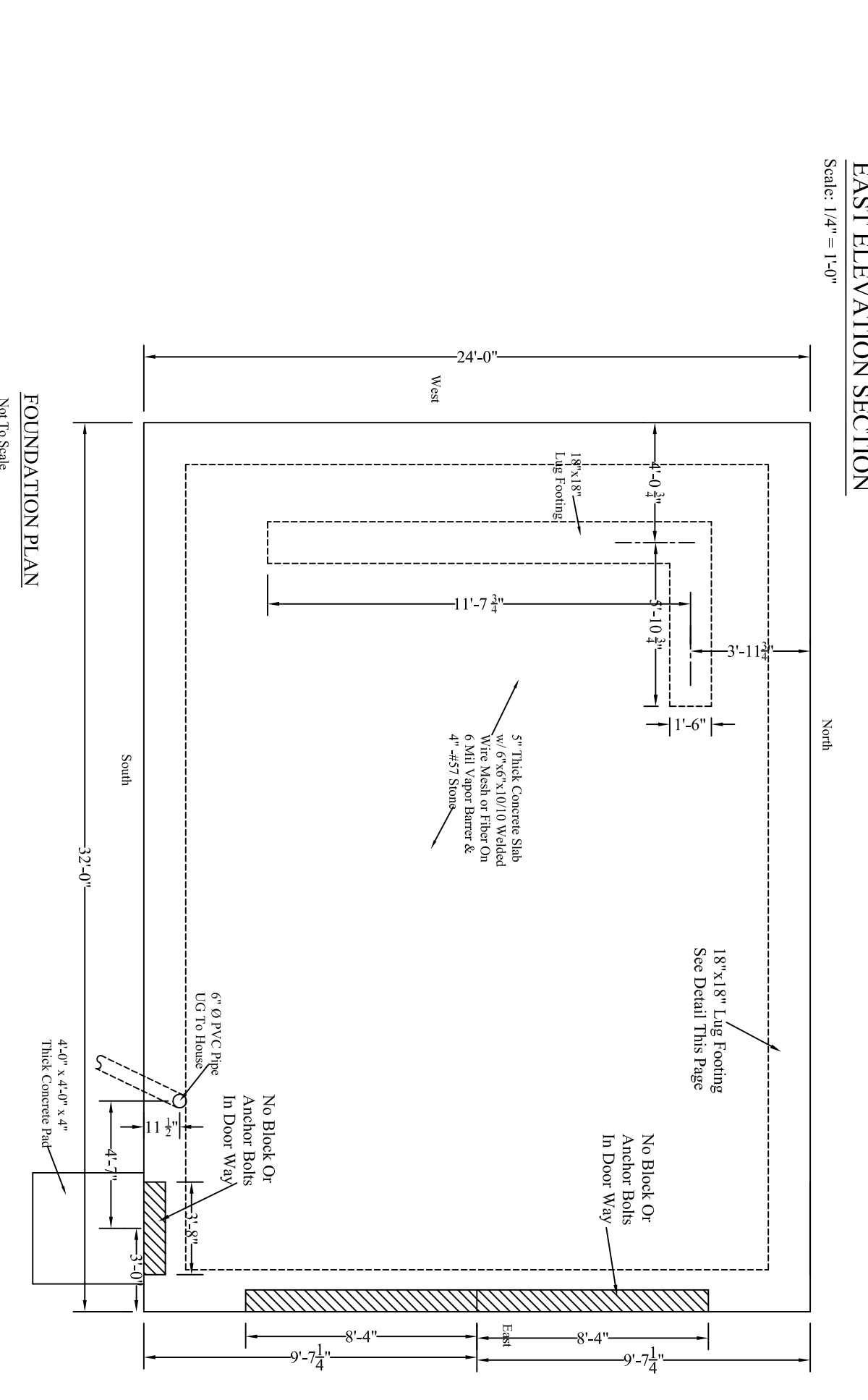
EAST ELEVATION SECTION
Scale: 1/4" = 1'-0"



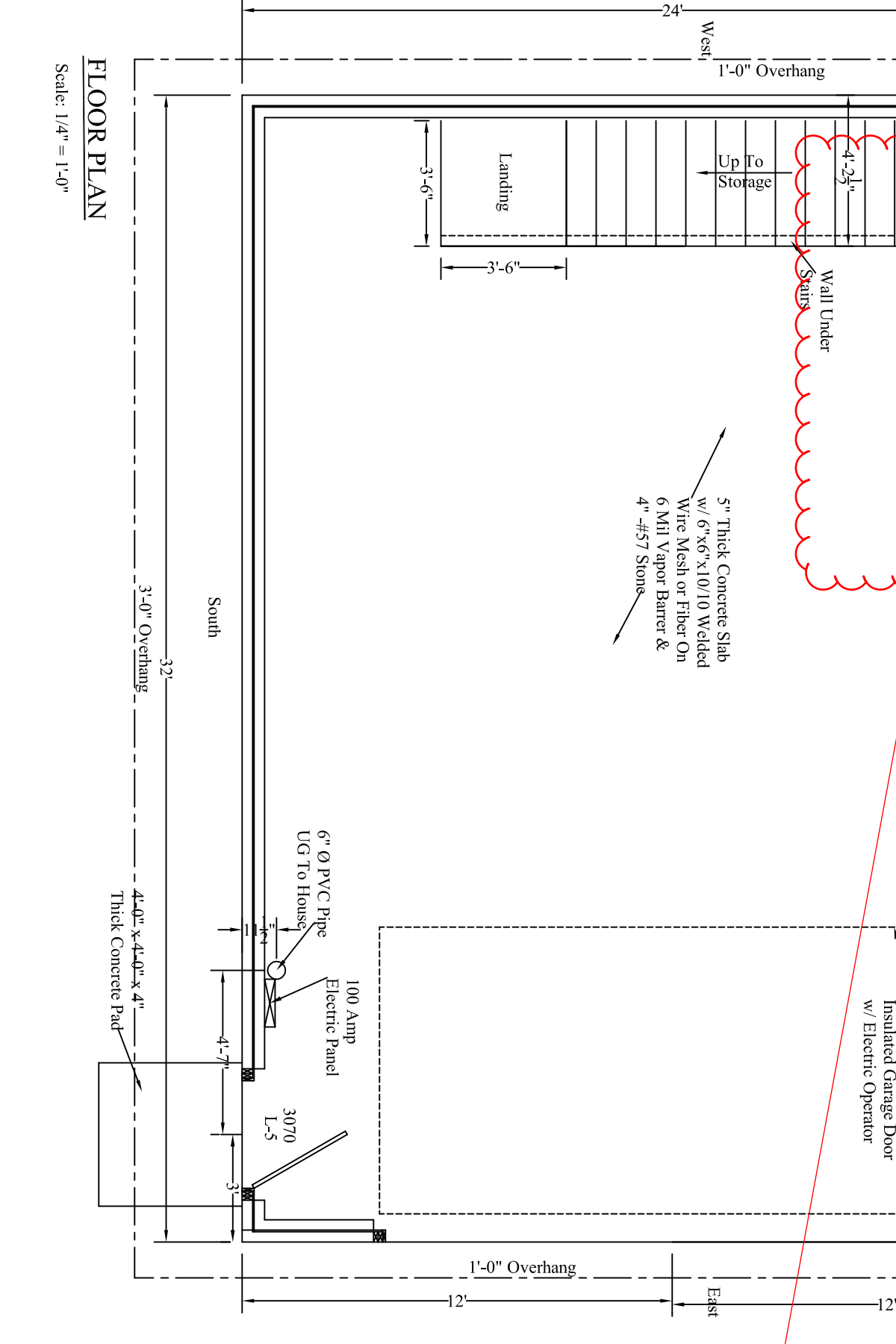
WEST ELEVATION
Not To Scale



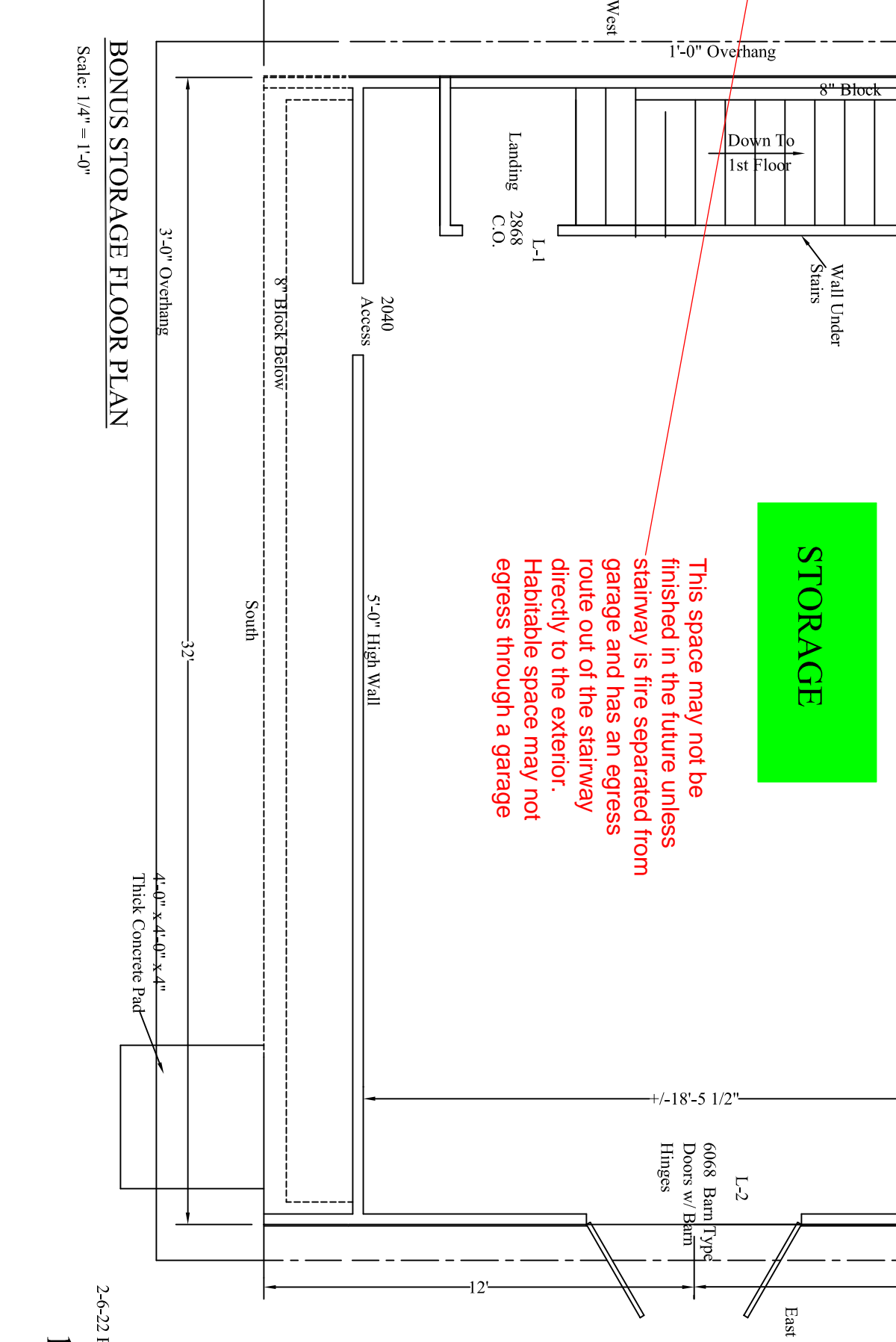
LUG DETAIL
Scale: 3/4" = 1'-0"



FOUNDATION PLAN
Not To Scale



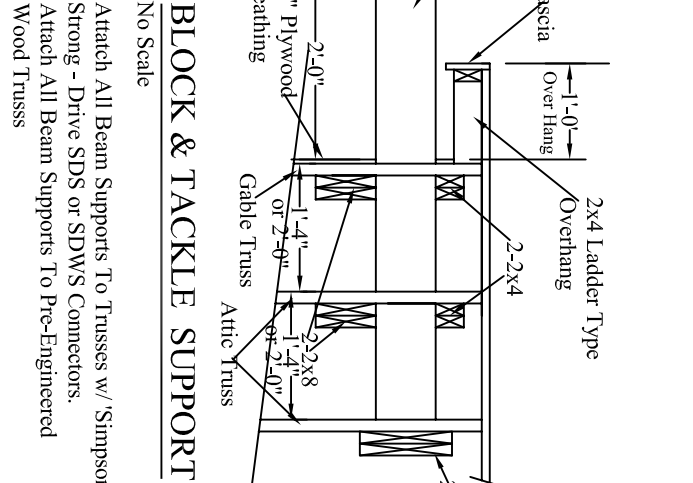
FLOOR PLAN
Scale: 1/4" = 1'-0"



BONNIS STORAGE FLOOR PLAN
Scale: 1/4" = 1'-0"

STORAGE
This space may not be finished in the future unless stairway is fire separated from garage and has an egress route out to the exterior. Habitable space may not egress through a garage.

- WOOD LINTELS**
- 2nd Floor Of 2 Story House
 - L-1 - 4'-6" Span - Use 2x10 w/ 2 Jacks
 - L-2 - 6'-3" Span - Use 2x10 w/ 2 Jacks
 - L-3 - 7'-3" Span - Use 2x12 w/ 2 Jacks
 - L-4 - 8'-0" Span - Use 2x12 w/ 2 Jacks & 3 Jacks
- 1st Floor Of 2 Story House**
- L-5 - 4'-6" Span - Use 2x8 w/ 2 Jacks
 - L-6 - 6'-0" Span - Use 2x8 w/ 2 Jacks
 - L-7 - 6'-3" Span - Use 2x12 w/ 2 Jacks
 - L-8 - 7'-0" Span - Use 2x12 w/ 1/2" Plywood & 3 Jacks



BLOCK & TACKLE SUPPORT
Not Scale
Attach All Beam Supports To Trusses w/ Simpson' Attach All Beam Supports To Pre-Engineered Wood Truss

