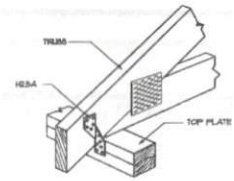


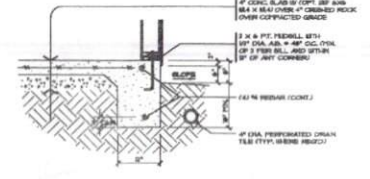
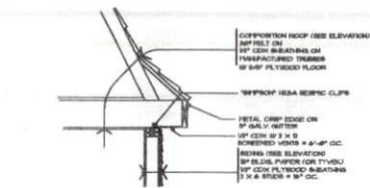
GABLE END DETAIL
NOT TO SCALE

ELECTRICAL LEGEND

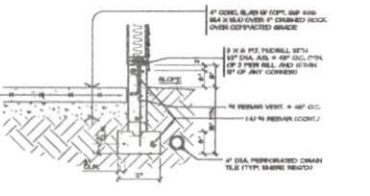
5	BATCH SINGLE POLE
⊕	BATCH 3-WAY
⊖	COMPLEX OUTLET
⊕	200 VOLT OUTLET
⊕	8' FLUORESCENT FIXTURE
⊕	4' FLUORESCENT FIXTURE
⊕	STANDARD INCANDESCENT
⊕	RECESSED INCANDESCENT
⊕	SERVICE PANEL
⊕	SMOKE DETECTOR
⊕	EXHAUST FAN VENTED TO EXTERIOR
⊕	CASET HEATER



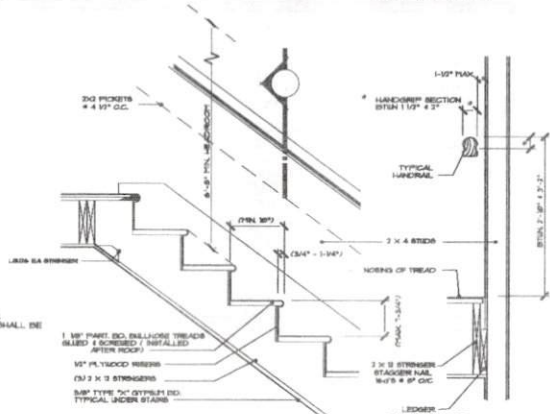
SIMPSON' H2.5A DETAIL
NOT TO SCALE



TYPICAL WALL SECTION
NOT TO SCALE

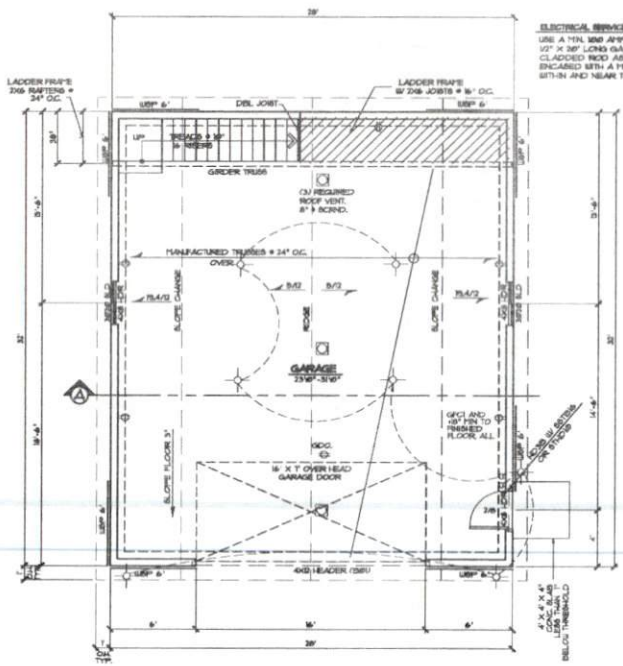


ALTERNATE FOUNDATION SECTION
NOT TO SCALE



STAIR DETAIL
1" = 1'-0"

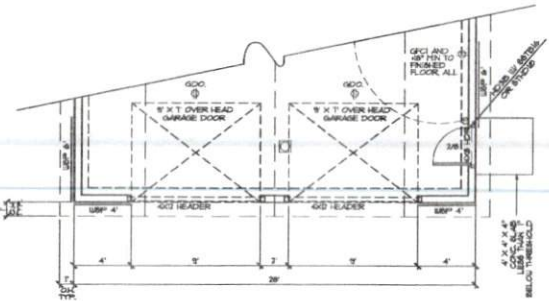
SECTION



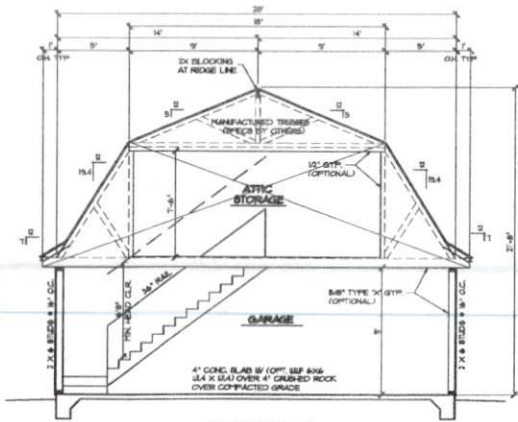
FOUNDATION, FLOOR AND ROOF PLAN
1/4" = 1'-0"

WOOD STRUCTURAL PANEL DEFINITION

A WOOD STRUCTURAL PANEL, CONSTRUCTED AS PER CURRENT EDITION "IRC (2003)"
STRUCTURAL PANEL, INSULATING RIB, IS, ISORIC U, SOLID PLYWOOD
ONE SIDE NAIL SP 8d @ 8" O.C. ON THE EDGES AND
16d @ 12" O.C. IN THE FIELD.
PROVIDE FRAMING PREFERS AT OPENINGS. USE EXTERIOR GLUE PLYWOOD.
PROVIDE FRAMING PREFERS OR BLOCKING AT EDGES OF ALL PLYWOOD SHEETS.
PROVIDE ANCHOR BOLTS AT EACH END OF EACH BRACE PANEL.
SEE TYPICAL WALL DETAIL.



FOUNDATION, FLOOR AND ROOF PLAN
TWO DOOR OPTION
1/4" = 1'-0"



SECTION A
1/4" = 1'-0"

22665 S.W. Conifer Drive
Sherwood, Or. 97140
www.cadnw.com

Custom Home Design
CAD NorthWest

Phone: (503) 625-6330

PLAN NUMBER:
G2832A

28' X 32' TWO CAR GARAGE PLAN

SHEET
2 of 2

THE CONTRACTOR IS TO CHECK AND VERIFY ACCURACY AND SEE COMMENTS BEFORE BEGINNING CONSTRUCTION. THE OWNER AGREES THAT CAD NORTHWEST SHALL BE LIABLE FOR COSTS ON CHANGES RESULTING FROM CHANGES MADE BY THE CONTRACTOR. THE CONTRACTOR SHALL MAINTAIN RECORDS OF ALL CHANGES AND PRESENT THEM TO THE ARCHITECT.

MATERIAL LIST

G2832A Garage Plan

Standard W/ Truss Roof

This estimate is designed solely to provide the customer with a rough estimate of the amount of material used in the given project. The material estimate is based on normal and typical building and construction techniques. The actual amount of material used may vary from this estimate due to a number of factors. Consequently, no representation or warranty has been made that the amount of material used will not vary from the estimate.

	ITEM	CALC	SIZE	LENGTH	O.C.	QTY	
1	MAIN EXT STUDS		2X6	95.09	16"	75	EA
2	MAIN TREATED SILL		2X6			101	LF
3	MAIN EXT PLATES		2X6			224	LF
4	HEADER, (Ext Main Garage Door)	B01	4X12	17'		1	EA
5	HEADER, (Ext Main Door)	N/A	4X8	4'		1	EA
6	HEADER, (Main Window)	N/A	4X8	4'		2	EA
7	TRUSSES				24"	15	EA
8	TRUSSES (Ends)					2	EA
9	EAVE BLOCKING		2X	22.5"	24"	32	EA
10	H2.5 RAFTER TIE				24"	34	EA
11	ROOF SHEATH		1/2" CDX			1320	SF
12	ROOF FELT		30# Felt			1320	SF
13	ROOFING					1320	SF
14	MAIN EXT WALL S.R. (Optional)		1/2" GYP.			841	SF
15	MAIN CEILING S.R. (Optional)		1/2" GYP.			896	SF
16	EXT WALL SHEATH		1/2" CDX			1005	SF
17	EXT WALL VAPOR		15# Felt			1005	SF
18	EXT SIDING (See Plan)		Varies			1005	SF
19	CONCRETE (Footing)		12" X 20"			7.41	CY
20	CONCRETE (Floor)		4"			11.06	CY
21	ANCHOR BOLTS		1/2"		48"	26	EA
22	WIRE MESH		6X6 W1.4 X W1.4			896	SF

G2832A Garage Plan

Garage Door Header

B01

Date: 10/02/08

Selection **4x 12 DF-L #2** **Lu = 0.0 Ft**

Conditions NDS 2001
 Min Bearing Area R1= 2.0 in² R2= 2.0 in² DL Defl 0.07 in

Data

Beam Span	16.0 ft	Reaction 1 LL	960 #	Reaction 2 LL	960 #
Beam Wt per ft	9.57 #	Reaction 1 TL	1229 #	Reaction 2 TL	1229 #
Bm Wt Included	153 #	Maximum V	1229 #		
Max Moment	4914 #'	Max V (Reduced)	1085 #		
TL Max Defl	L / 240	TL Actual Defl	L / 564		
LL Max Defl	L / 360	LL Actual Defl	L / 722		

Attributes

	Section (in ³)	Shear (in ²)	TL Defl (in)	LL Defl
Actual	73.83	39.38	0.34	0.27
Critical	59.57	9.04	0.80	0.53
Status	OK	OK	OK	OK
Ratio	81%	23%	43%	50%

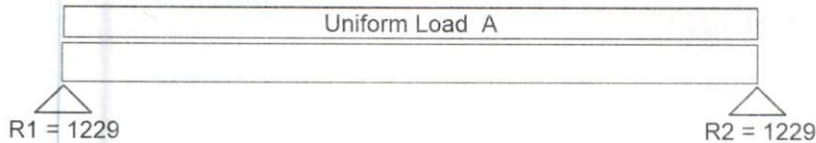
Values

	Fb (psi)	Fv (psi)	E (psi x mil)	Fc _⊥ (psi)
Base Values	900	180	1.6	625
Base Adjusted	990	180	1.6	625

Adjustments

CF Size Factor	1.100			
Cd Duration	1.00	1.00		
Cr Repetitive	1.00			
Ch Shear Stress		N/A		
Cm Wet Use	1.00	1.00	1.00	1.00
CI Stability	1.0000	Rb = 0.00	Le = 0.00 Ft	Kbe = 0.0

Loads Uniform LL: 120 Uniform TL: 144 = A



Uniform and partial uniform loads are lbs per lineal ft.



Custom Home Design

CAD NorthWest

February 1, 2022

Josh Jernigan
753 Tilghman Rd
Coats, NC 27521

Dear Josh Jernigan,

These are your original documents for you to copy and modify for your project. We recommend that you keep your originals and give only copies to contractors and planning departments. Some copy services will need permission to duplicate our copyrighted material. This letter is verification that you have permission to copy these drawings. If you have any questions or comments, please call us.

If you would like to remodel or build a new or custom home in the future, Cad Northwest offers the best PRICE, QUALITY, PERFORMANCE, and DELIVERY!

Cad Northwest has continued to grow steadily, and at the end of 2021 we finished our 31th successful year!

To maximize our services, we are continually trying to improve Cad Northwest. We have added new equipment and computer software to increase quality and achieve faster turn-around times. We have the flexibility of a small company to quickly make changes that will benefit you with exactly what you want.

We would like to encourage you to call Cad Northwest when you begin your future home design project. Contact us for an instant quote at (503) 625-6330. Please check out our web site, "<http://www.cadnw.com/>" for more information.

Cordially,

Tom Easton

Enclosures:

- Garage Plans
- Invoice

How to Use These Plans

Make copies of these plans for modifying, giving to contractors for bids, and giving to your planning department. Keep the master drawings so that you may make new copies in the future. Take the master drawings and the invoice or letter, allowing permission to copy, to a blue printing shop for copying. A typical copy is about \$1.30 per sheet at the blue print shop and \$3.00 at Kinko's.

Our plans are construction blueprints drawn to basic architectural drafting standards. They are not detailed, step by step, instructions. There are many "how to" books available that describe the carpentry techniques required to construct a building. They are available at Home Depot, Lowe's, on-line book stores, and some hardware stores.

Many minor changes can be made to our plans and still obtain a permit in most areas of the U.S. Changing the ceiling height, pitch of the roof, moving a window or door, or changing the size of a window or door are minor changes. The strictness of planning departments varies greatly. Most rural areas are lenient. Large cities are more strict. Areas in California and Florida are very strict. Minor changes are not allowed in the strictest areas. Talk to your planning department and ask if the minor change you are considering will be acceptable with out a full redraw of the plans.

There are several ways to modify these plans. For simple changes, erasing and adding new text is sufficient. Use an ink eraser to remove the existing text. Redraw with ink or dark pencil. Whiteout can be used to erase paper copies. Entire details can be removed by covering with a piece of paper the appropriate size before recopying. We provide building options on the plans. Some planning departments do not want options on the plans. Decide which options you are going to use and remove the unused options from the plans.

Our stock plan package includes a basic materials list, which may be used to estimate the cost of materials. It lists major wood components, concrete, and hold-downs and is an approximation of the materials used. Always verify the accuracy of the materials list before ordering components. Some components cannot be returned to the supplier without a restocking charge.

Beam calculations are provided with most plans. Beams longer than 10' have a calculation to show that they are of sufficient strength to withstand the load applied. These are not required for some planning departments and we do not send them with plans sent to California. The planning department will require truss engineering for truss roof plans. These are obtained from the truss manufacturer and are part of their package. Hand made trusses will require engineering from an engineer licensed in your state. We do not design trusses.

Take the required number of plan copies, copies of the beam calculations (if required), and copies of the truss engineering (if a truss roof) to the planning department to apply for a permit. Provide competing contractors with a copy of the plans and the materials list. They will be able to bid on the same exact building and provide the most accurate quotes.