



OLD HICKORY BUILDINGS, LLC

P.O. BOX 331973
MURFREESBORO, TN 37133

PIERS:

1. A CONCRETE FOUNDATION MAY BE REQUIRED FOR BUILDINGS OVER 400 SQUARE FEET. THE PROPERTY OWNER IS SOLELY RESPONSIBLE FOR VERIFYING FOUNDATION REQUIREMENTS WITH THEIR LOCAL BUILDING DEPARTMENT AND PROVIDING ANY REQUIRED FOUNDATIONS PRIOR TO BUILDING DELIVERY. OLD HICKORY BUILDINGS IS NOT RESPONSIBLE FOR THE DESIGN OR PLACEMENT OF ANY REQUIRED CONCRETE FOUNDATIONS.

2. PIERS ARE NOT REQUIRED WHEN THE SKIDS CAN BE SUPPORTED ON FIRM, LEVEL GROUND. PIERS ALONG INTERIOR SKIDS SHALL BE ORIENTED WITH THE LONG SIDE PERPENDICULAR TO THE SKID. PIERS ALONG THE OUTSIDE SKIDS OF BUILDINGS WITH 4 SKIDS ARE PERMITTED TO BE ORIENTED WITH THE LONG SIDE PARALLEL TO THE SKID PROVIDED THAT THE PIERS ALONG THE INTERIOR SKID ARE ORIENTED PERPENDICULAR TO THE SKID.

3. PIERS SHALL TYPICALLY BE 8"x8"x16" OPEN CELL OR SOLID CONCRETE BLOCKS, DRY STACKED TO A MAXIMUM HEIGHT OF 36". THE BLOCK IN CONTACT WITH THE GROUND AT EACH PIER SHALL BE A 4"x8"x16" SOLID BLOCK. OPEN CELL BLOCKS AND 2" THICK SOLID BLOCKS ARE NOT TO BE USED AS THE BASE OF ANY PIERS. OPEN CELL BLOCKS ARE TO BE PLACED ON TOP OF SOLID BLOCKS AS NEEDED WITH THE OPEN CELLS RUNNING VERTICALLY AND MUST NOT BE PLACED ON THEIR SIDE.

CORNER PIERS OVER 20" TALL SHALL BE DOUBLE STACKED CONCRETE BLOCKS. TIE DOUBLE STACKED BLOCKS BY ALTERNATING THE DIRECTION OF BLOCKS ON EACH ROW.

4. OLD HICKORY BUILDINGS IS NOT RESPONSIBLE FOR THE PREPARATION OF THE PROPOSED SITE. IT IS THE PROPERTY OWNER'S RESPONSIBILITY TO DETERMINE IF SITE CONDITIONS ARE SUITABLE TO SUPPORT THE STRUCTURE.

5. PIERS SHOWN ON SHEET S-1 ARE CONCEPTUAL AND MAY NOT REFLECT ACTUAL CONDITIONS. THE PIER LAYOUT MAY BE ADJUSTED AS NEEDED BASED ON SITE CONDITIONS, PROVIDED THAT THE MAXIMUM SPACING SHOWN IS NOT EXCEEDED.

GENERAL NOTES:

1. STRUCTURE HAS BEEN DESIGNED IN ACCORDANCE WITH THE 2018 NORTH CAROLINA RESIDENTIAL CODE (NCRC) AND THE 2018 NORTH CAROLINA BUILDING CODE (NCBC).
2. ALL MATERIALS AND CONSTRUCTION SHALL BE IN ACCORDANCE WITH THE ABOVE CODES AT THE TIME OF MANUFACTURE.
3. DRAWINGS SHALL NOT BE SCALED FOR DIMENSIONS.
4. STRUCTURES ARE CLASSIFIED AS "MINOR STORAGE FACILITIES" (RISK CATEGORY I) PER NCBC TABLE 1604.5 AND SHOULD NOT BE USED FOR HUMAN HABITATION.
5. SIDING FASTENERS SHALL NOT BE INSTALLED IN PANEL SIDING GROOVES IN THE FIELD OF THE PANEL OR WHEN THE SIDING GROOVES OCCUR AT CUT EDGES OF THE SIDING PANEL.
6. STRUCTURES SHOULD HAVE 25 YEAR RATED FIBERGLASS/ ASPHALT SHINGLES OR 29 GA METAL ROOFING OVER WOOD SHEATHING.
7. WOOD FRAMING SHALL COMPLY WITH THE ANS/AWC "NATIONAL DESIGN SPECIFICATION (NDS) FOR WOOD CONSTRUCTION", 2015.
8. ALL ROOF DECKING IS TO BE 7/16" OSB.
9. ALL SIDING IS TO BE 5/8" TREATED T1-11 PLYWOOD, 5/8" LP SMART PANEL, OR LP DUTCH LAP SIDING. 7/16" OSB WALL SHEATHING IS TO BE INSTALLED ON ALL WALLS USING DUTCH LAP SIDING.
10. ALL FLOOR JOISTS ARE TO BE PRESSURE TREATED SYP #2, OR BETTER, UNLESS NOTED OTHERWISE. FLOOR JOISTS FOR 10' WIDE BUILDINGS ARE TO BE SYP #1, OR BETTER.

11. ALL UN-TREATED WOOD FRAMING IS TO BE SPF #2 OR BETTER.
12. ALL EXTERIOR NAILS ARE TO BE ZINC COATED.
13. ALL FLOOR DECKING IS TO BE 5/8" OR 3/4" PLYWOOD OR ENGINEERED FLOORING.
14. ALL SKIDS ARE TO BE 4x6 PRESSURE TREATED, RATED FOR GROUND CONTACT.
15. SECTIONS AND DETAILS SHOWN ARE INTENDED TO BE TYPICAL AND SHALL APPLY AT ALL SIMILAR LOCATIONS, UNLESS NOTED OTHERWISE.

ITEMS BY OTHERS:

THE FOLLOWING ITEMS ARE TO BE SUPPLIED AND INSTALLED BY OTHERS. THESE ITEMS MAY BE SUBJECT TO LOCAL JURISDICTION APPROVAL. OLD HICKORY BUILDINGS IS NOT RESPONSIBLE FOR THESE ITEMS.

1. THE COMPLETE FOUNDATION AND TIE-DOWN SYSTEM
2. RAMPS, STAIRS, AND GENERAL ACCESS
3. ELECTRICAL SERVICE HOOKUP

DESIGN CRITERIA:

1. RISK CATEGORY I
2. FLOOR LIVE LOAD: 40 PSF
3. ROOF LIVE LOAD: 20 PSF (REDUCIBLE PER NCBC 1607.12.2.1)
4. SNOW LOADS ARE BASED ON THE FOLLOWING:
GROUND SNOW LOAD, P_g = 20 PSF
FLAT ROOF SNOW LOAD, P_f = 14 PSF
EXPOSURE FACTOR, C_e = 1.0
IMPORTANCE FACTOR, I = 0.8
THERMAL FACTOR, C_t = 1.2
5. WIND LOADS ARE BASED ON THE FOLLOWING:
V_{ult} = 115 MPH
RISK CATEGORY I
EXPOSURE CATEGORY B
INTERNAL PRESSURE COEFFICIENT:
GC_{pi} = ±0.18
COMPONENTS & CLADDING:
ROOF-ZONE 1 = 10.0, -13.1 PSF
ROOF-ZONE 2 = 10.0, -22.7 PSF
ROOF-ZONE 3 = 10.0, -33.6 PSF
WALL-ZONE 4 = 14.3, -15.5 PSF
WALL-ZONE 5 = 14.3, -19.1 PSF

NOTE: C&C WIND PRESSURES SHOWN ARE FOR A 10 SQUARE FOOT EFFECTIVE AREA (A_e) AND MAY BE REDUCED FOR LARGER AREAS AS ALLOWED BY CODE.

LOFTED BARN--NORTH CAROLINA--2018 NCBC



5-10-21



PROJECT NO:	
DATE:	04-16-2021
DRAWN BY:	KLN
CHECKED BY:	KLN
REVISION:	05-10-2021

SHEET NUMBER	S-0-LB
SCALE: NONE	



2-10-21

LOFTED BARN--NORTH CAROLINA--2018 NCBC

OLD HICKORY BUILDINGS



REVISION:	02-10-2021
CHECKED BY:	KLN
DRAWN BY:	KLN
DATE:	04-18-2021
PROJECT NO.:	

3-01B

SCALE: NONE

SHEET NUMBER

2. ELECTRICAL SERVICE HOOKUP.
3. RAMPS, STAIRS, AND GENERAL ACCESS
4. THE COMPLETE FOUNDATION AND THE DOWN SYSTEM

10. ALL FLOOR JOISTS ARE TO BE PRESURE TREATED
8. ALL SIDING IS TO BE #2 TREATED T-11 PLYWOOD.
9. ALL ROOF DECKING IS TO BE #2 OSB.
7. WOOD FRAMING SHALL COMPLY WITH THE ANGLAW NATIONAL DESIGN SPECIFICATION (NDS) FOR WOOD CONSTRUCTION, 2018.

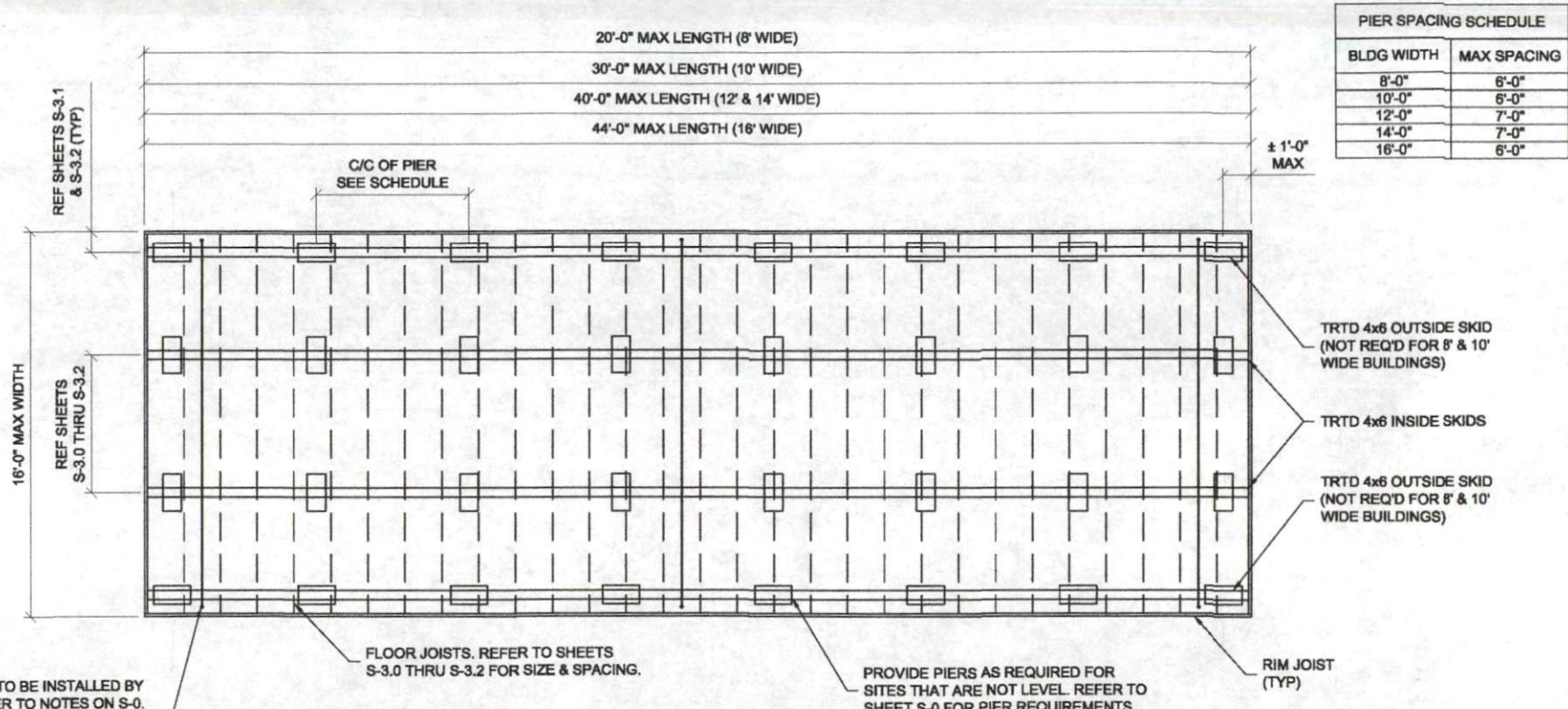
1. STRUCTURES SHOULD HAVE 28 YEAR RATED FIBERGLASS ASPHALT SHINGLES OR 28 GA METAL ROOFING OVER WOOD SHEDTING.
2. STRUCTURES SHALL NOT BE INSTALLED IN PANEL SIDING GROOVES IN THE FIELD OF THE PANEL OR WHEN THE SIDING GROOVES OCCUR AT CUT EDGES OF THE SIDING PANEL.
3. SIDING FASTENERS SHALL NOT BE INSTALLED IN PANEL SIDING FACILITIES (Risk Category I) PER NCBC TABLE 1604.6 AND SHOULD NOT BE USED FOR HUMAN HABITATION.
4. STRUCTURES ARE CLASSIFIED AS "MINOR STORAGE MANUFACTURE ACCORDANCE WITH THE ABOVE CODES AT THE TIME OF 5. ALL MATERIALS AND CONSTRUCTION SHALL BE IN ACCORDANCE WITH THE 2018 NORTH CAROLINA RESIDENTIAL CODE (NCRC) AND THE 2018 NORTH CAROLINA BUILDING CODE (NCBC).
GENERAL NOTES:
1. STRUCTURE HAS BEEN DESIGNED IN ACCORDANCE WITH

UNLESS NOTED OTHERWISE.
18. SECTIONS AND DETAILS SHOWN ARE INTENDED TO BE TYPICAL AND SHALL APPLY AT ALL SIMILAR LOCATIONS.
19. ALL SKIDS ARE TO BE 4x6 PRESURE TREATED RATED FOR GROUND CONTACT.
13. ALL FLOOR DECKING IS TO BE #2 OR #1 PLYWOOD OR ENGINEERED FLOORING.
12. ALL EXTERIOR NAILS ARE TO BE ZINC COATED OR BETTER.
11. ALL UN-TREATED WOOD FRAMING IS TO BE 6x6 OR BETTER.

DESIGN CRITERIA
1. RISK CATEGORY I
2. FLOOR LIVE LOAD: 40 PSF
3. ROOF LIVE LOAD: 20 PSF
4. SNOW LOADS ARE BASED ON THE FOLLOWING:
GROUND SNOW LOAD, $P_g = 20$ PSF
FLAT ROOF SNOW LOAD, $P_f = 14$ PSF
EXPOSURE FACTOR, $C_e = 1.0$
IMPORTANCE FACTOR, $I = 0.8$
THERMAL FACTOR, $C_t = 1.2$
5. WIND LOADS ARE BASED ON THE FOLLOWING:
Risk Category I
Exposure Category B
Internal Pressure Coefficient:
 $C_{pi} = 0.18$
Components & Cladding:
Roof-Zone 1 = 10.0, 10.1 PSF
Roof-Zone 2 = 10.0, 10.1 PSF
Roof-Zone 3 = 10.0, 10.1 PSF
Wall-Zone 4 = 14.3, 14.5 PSF
Wall-Zone 5 = 14.3, 14.5 PSF

SPACING SHOWN IS NOT EXCEEDED.
2. PIERS SHOWN ON SHEET 2-1 ARE CONCEPTUAL AND MAY NOT REFLECT ACTUAL CONDITIONS. THE PIER LAYOUT MAY BE ADJUSTED AS NEEDED BASED ON SITE CONDITIONS, PROVIDED THAT THE MAXIMUM SPACING SHOWN IS NOT EXCEEDED.
3. PIERS SHALL TYPICALLY BE BARRER OPEN CELL OR SOLID CONCRETE BLOCKS, ONLY STACKED TO A MAXIMUM HEIGHT OF 36". THE BLOCK IN CONTACT WITH THE GROUND AT EACH PIER SHALL BE A 4"x8"x16" SOLID BLOCK. OPEN CELL BLOCKS AND 2" THICK SOLID BLOCKS ARE NOT TO BE USED AS THE BASE OR ANY PIERS. OPEN CELL BLOCKS ARE TO BE PLACED ON TOP OF SOLID BLOCKS AS NEEDED WITH THE OPEN CELLS RUNNING VERTICALLY AND MUST NOT BE PLACED ON THEIR SIDE.
4. OLD HICKORY BUILDINGS IS NOT RESPONSIBLE FOR THE PREPARATION OF THE PROPOSED SITE. IT IS THE PROPERTY OWNERS RESPONSIBILITY TO DETERMINE IF SITE CONDITIONS ARE SUITABLE TO SUPPORT THE STRUCTURE.
5. PIERS SHALL TYPICALLY BE BARRER OPEN CELL OR SOLID CONCRETE BLOCKS, ONLY STACKED TO A MAXIMUM HEIGHT OF 36". THE BLOCK IN CONTACT WITH THE GROUND AT EACH PIER SHALL BE A 4"x8"x16" SOLID BLOCK. OPEN CELL BLOCKS AND 2" THICK SOLID BLOCKS ARE NOT TO BE USED AS THE BASE OR ANY PIERS. OPEN CELL BLOCKS ARE TO BE PLACED ON TOP OF SOLID BLOCKS AS NEEDED WITH THE OPEN CELLS RUNNING VERTICALLY AND MUST NOT BE PLACED ON THEIR SIDE.
6. CORNER PIERS OVER 36" TALL SHALL REDOUBLE STACKED CONCRETE BLOCKS. THE DOUBLE STACKED BLOCK BY ALTERATING THE DIRECTION OF BLOCKS ON EACH ROW.
7. A CONCRETE FOUNDATION MAY BE REQUIRED FOR BUILDINGS OVER 400 SQUARE FEET. THE PROPERTY OWNER IS SOLELY RESPONSIBLE FOR VERIFYING FOUNDATION REQUIREMENTS WITH THEIR LOCAL BUILDING DEPARTMENT AND PROVIDING ANY REQUIRED FOUNDATIONS PRIOR TO BUILDING DELIVERY. OLD HICKORY BUILDINGS IS NOT RESPONSIBLE FOR THE DESIGN OR PLACEMENT OF ANY REQUIRED CONCRETE FOUNDATIONS.
8. PIERS ARE NOT REQUIRED WHEN THE SKIDS CAN BE SUPPORTED ON FIRM LEVEL GROUND. PIERS ALONG INTERIOR SKIDS SHALL BE ORIENTED WITH THE LONG SIDE PERPENDICULAR TO THE SKID. PIERS ALONG THE OUTSIDE SKIDS OF BUILDINGS WITH 4 SKIDS ARE PERMITTED TO BE ORIENTED WITH THE LONG SIDE PARALLEL TO THE SKID PROVIDED THAT THE PIERS ALONG THE INTERIOR SKID ARE ORIENTED PERPENDICULAR TO THE SKID.

OLD HICKORY BUILDINGS, LLC
P.O. BOX 331973
MURREESBORO, TN 37133



PIER SPACING SCHEDULE	
BLDG WIDTH	MAX SPACING
8'-0"	6'-0"
10'-0"	6'-0"
12'-0"	7'-0"
14'-0"	7'-0"
16'-0"	6'-0"

FLOOR FRAMING PLAN

BUILDING TIE-DOWN TO BE INSTALLED BY THE CUSTOMER. REFER TO NOTES ON S-0. THE QUANTITY OF TIE-DOWNS SHOWN ON THIS PLAN ARE CONCEPTUAL AND MAY NOT REFLECT THE ACTUAL REQUIRED QUANTITY. SEE THE SCHEDULE ON SHEET S-2 FOR THE REQUIRED TIE-DOWN QUANTITY AND LOAD RATING BASED ON THE BUILDING LENGTH (TYP)



4-16-21

LOFTED BARN--NORTH CAROLINA--2018 NCBC



PROJECT NO:	
DATE:	04-16-2021
DRAWN BY:	KLN
CHECKED BY:	KLN
REVISION:	

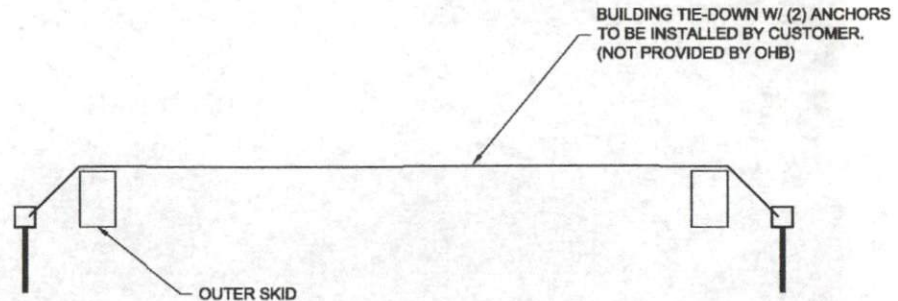
SHEET NUMBER
S-1-LB
SCALE: NOT TO SCALE

UPLIFT ANCHORAGE SCHEDULE

BLDG LENGTH	8' WIDE BLDGS		10' WIDE BLDGS		12' WIDE BLDGS		14' WIDE BLDGS		16' WIDE BLDGS	
	NUMBER OF TIE-DOWNS	REQ'D ANCHOR CAPACITY	NUMBER OF TIE-DOWNS	REQ'D ANCHOR CAPACITY	NUMBER OF TIE-DOWNS	REQ'D ANCHOR CAPACITY	NUMBER OF TIE-DOWNS	REQ'D ANCHOR CAPACITY	NUMBER OF TIE-DOWNS	REQ'D ANCHOR CAPACITY
8'-0"	2	350#	-	-	-	-	-	-	-	-
10'-0"	2	400#	2	350#	-	-	-	-	-	-
12'-0"	2	450#	2	450#	2	350#	-	-	-	-
14'-0"	2	550#	2	500#	2	400#	2	350#	-	-
16'-0"	3	400#	3	400#	2	450#	2	400#	2	400#
18'-0"	3	450#	3	450#	2	500#	2	450#	2	450#
20'-0"	3	500#	3	500#	2	550#	2	500#	2	500#
22'-0"	-	-	3	550#	3	450#	2	550#	2	550#
24'-0"	-	-	4	450#	3	450#	3	400#	3	400#
26'-0"	-	-	4	450#	3	500#	3	450#	3	450#
28'-0"	-	-	4	500#	3	550#	3	500#	3	500#
30'-0"	-	-	4	550#	4	450#	3	500#	3	500#
32'-0"	-	-	-	-	4	450#	3	550#	3	550#
34'-0"	-	-	-	-	4	500#	4	450#	4	450#
36'-0"	-	-	-	-	4	500#	4	450#	4	450#
38'-0"	-	-	-	-	4	550#	4	500#	4	500#
40'-0"	-	-	-	-	4	550#	4	500#	4	500#
42'-0"	-	-	-	-	-	-	-	-	4	550#
44'-0"	-	-	-	-	-	-	-	-	4	550#

NOTES:

- 1) TIE-DOWNS AND ANCHORS ARE TO BE SUPPLIED AND INSTALLED BY THE CUSTOMER. OLD HICKORY BUILDINGS IS NOT RESPONSIBLE FOR THE TIE-DOWN SYSTEM. REFER TO NOTE SHEET S-0.
- 2) THE SCHEDULE INDICATES THE RECOMMENDED NUMBER OF BUILDING TIE-DOWNS TO BE INSTALLED BY THE CUSTOMER. EACH TIE-DOWN SYSTEM SHALL HAVE AN ANCHOR AT EACH END. EACH TIE-DOWN COMPONENT IS TO BE RATED FOR AT LEAST THE CAPACITY SHOWN IN THE SCHEDULE.
- 3) AT A MINIMUM, PROVIDE A TIE-DOWN NEAR EACH END OF THE BUILDING. REMAINING TIE-DOWNS (IF REQUIRED) SHOULD BE EVENLY SPACED ALONG THE ENTIRE LENGTH OF BUILDING.



4-16-21

LOFTED BARN--NORTH CAROLINA--2018 NCBC



PROJECT NO:
DATE: 04-16-2021
DRAWN BY: KLN
CHECKED BY: KLN
REVISION:

SHEET NUMBER

S-2-LB

SCALE: NONE

4-10-01



REVISION:
 CHECKED BY: KGI
 DRAWN BY: KGI
 DATE: 04-18-2024
 PROJECT NO:

SHEET NO. 2-5-17
 SHEET NUMBER

LOFTED BARI-NORTH SAHOPIA--2018 ISBC

OF BUILDING
 LIE-DOWNS (IF REQUIRED) SHOULD BE EVENLY PLACED ALONG THE ENTIRE LENGTH
 3) AT A MINIMUM, PROVIDE A LIE-DOWN NEAR EACH END OF THE BUILDING, REMAINING

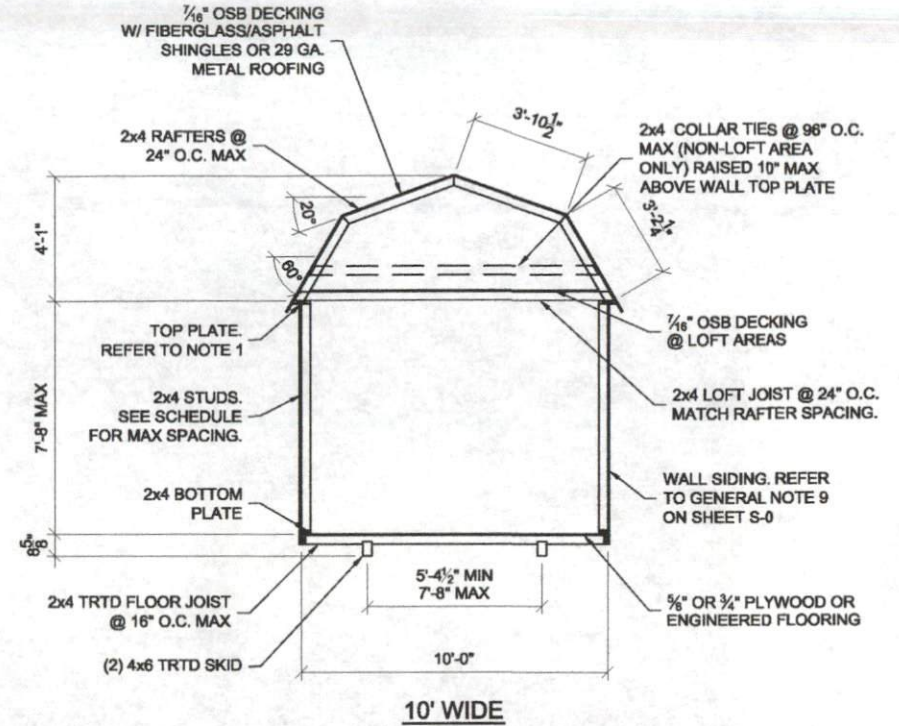
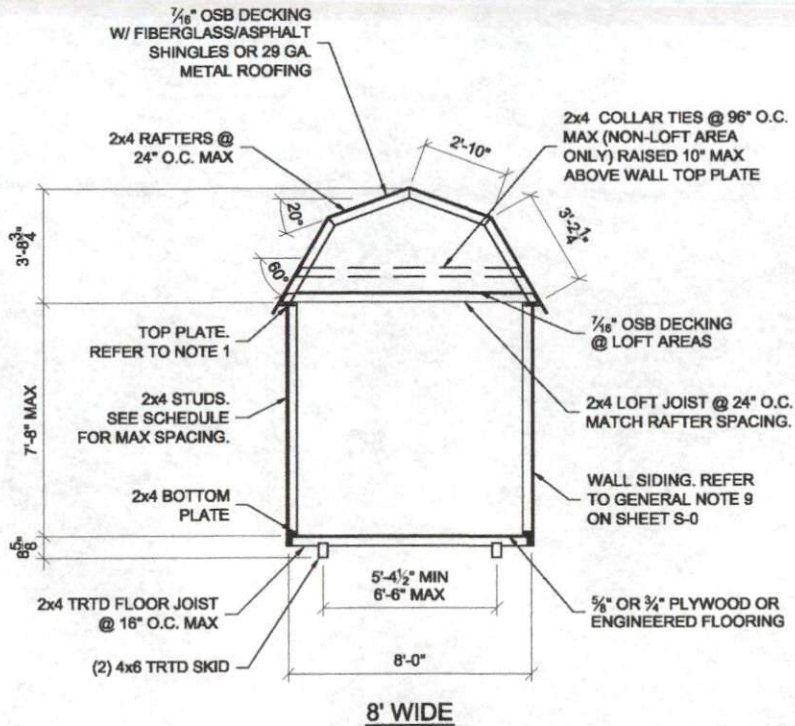
SCHEDULE
 EACH LIE-DOWN COMPONENT IS TO REMAIN FOR AT LEAST THE CAPACITY SHOWN IN THE
 INSTALLED BY THE SUPPLIER. EACH LIE-DOWN PARTEN SHALL HAVE AN ANCHOR AT EACH END
 4) THE SCHEDULE INDICATES THE RECOMMENDED NUMBER OF BUILDING LIE-DOWNS TO BE

BARREN. REFER TO NOTE SHEET 2-0
 SUPPLIER OLD NICKONIA BUILDINGS IS NOT RESPONSIBLE FOR THE LIE-DOWN
 4) LIE-DOWNS AND ANCHORS ARE TO BE SUPPLIED AND INSTALLED BY THE
 NOTES



(NOT PROVIDED BY OWNER)
 TO BE INSTALLED BY SUPPLIER
 BUILDING LIE-DOWN WITH ANCHORS

16'-0"									4	200#
15'-0"									4	200#
14'-0"									4	200#
13'-0"									4	200#
12'-0"									4	200#
11'-0"									4	200#
10'-0"									4	200#
9'-0"									4	200#
8'-0"									4	200#
7'-0"									4	200#
6'-0"									4	200#
5'-0"									4	200#
4'-0"									4	200#
3'-0"									4	200#
2'-0"									4	200#
1'-0"									4	200#
0'-0"									4	200#
16'-0"									4	200#
15'-0"									4	200#
14'-0"									4	200#
13'-0"									4	200#
12'-0"									4	200#
11'-0"									4	200#
10'-0"									4	200#
9'-0"									4	200#
8'-0"									4	200#
7'-0"									4	200#
6'-0"									4	200#
5'-0"									4	200#
4'-0"									4	200#
3'-0"									4	200#
2'-0"									4	200#
1'-0"									4	200#
0'-0"									4	200#
16'-0"									4	200#
15'-0"									4	200#
14'-0"									4	200#
13'-0"									4	200#
12'-0"									4	200#
11'-0"									4	200#
10'-0"									4	200#
9'-0"									4	200#
8'-0"									4	200#
7'-0"									4	200#
6'-0"									4	200#
5'-0"									4	200#
4'-0"									4	200#
3'-0"									4	200#
2'-0"									4	200#
1'-0"									4	200#
0'-0"									4	200#
16'-0"									4	200#
15'-0"									4	200#
14'-0"									4	200#
13'-0"									4	200#
12'-0"									4	200#
11'-0"									4	200#
10'-0"									4	200#
9'-0"									4	200#
8'-0"									4	200#
7'-0"									4	200#
6'-0"									4	200#
5'-0"									4	200#
4'-0"									4	200#
3'-0"									4	200#
2'-0"									4	200#
1'-0"									4	200#
0'-0"									4	200#
16'-0"									4	200#
15'-0"									4	200#
14'-0"									4	200#
13'-0"									4	200#
12'-0"									4	200#
11'-0"									4	200#
10'-0"									4	200#
9'-0"									4	200#
8'-0"									4	200#
7'-0"									4	200#
6'-0"									4	200#
5'-0"									4	200#
4'-0"									4	200#
3'-0"									4	200#
2'-0"									4	200#
1'-0"									4	200#
0'-0"									4	200#
16'-0"									4	200#
15'-0"									4	200#
14'-0"									4	200#
13'-0"									4	200#
12'-0"									4	200#
11'-0"									4	200#
10'-0"									4	200#
9'-0"									4	200#
8'-0"									4	200#
7'-0"									4	200#
6'-0"									4	200#
5'-0"									4	200#
4'-0"									4	200#
3'-0"									4	200#
2'-0"									4	200#
1'-0"									4	200#
0'-0"									4	200#
16'-0"									4	200#
15'-0"									4	200#
14'-0"									4	200#
13'-0"									4	200#
12'-0"									4	200#
11'-0"									4	200#
10'-0"									4	200#
9'-0"									4	200#
8'-0"									4	200#
7'-0"									4	200#
6'-0"									4	200#
5'-0"									4	200#
4'-0"									4	200#
3'-0"									4	200#
2'-0"									4	200#
1'-0"									4	200#
0'-0"									4	200#
16'-0"									4	200#
15'-0"									4	200#
14'-0"									4	200#
13'-0"									4	200#
12'-0"									4	200#
11'-0"									4	200#
10'-0"									4	200#
9'-0"									4	200#
8'-0"									4	200#
7'-0"									4	200#
6'-0"									4	200#
5'-0"									4	200#
4'-0"									4	200#
3'-0"									4	200#
2'-0"									4	200#
1'-0"									4	200#
0'-0"									4	200#
16'-0"									4	200#
15'-0"									4	200#
14'-0"									4	200#
13'-0"									4	200#
12'-0"									4	200#
11'-0"									4	200#
10'-0"									4	200#
9'-0"									4	200#
8'-0"									4	200#
7'-0"									4	200#
6'-0"									4	200#
5'-0"									4	200#
4'-0"									4	200#
3'-0"									4	200#
2'-0"									4	200#
1'-0"									4	200#
0'-0"									4	200#
16'-0"									4	200#
15'-0"									4	200#
14'-0"									4	200#
13'-0"									4	200#
12'-0"									4	200#
11'-0"									4	200#
10'-0"									4	200#
9'-0"									4	200#
8'-0"									4	200#
7'-0"									4	200#
6'-0"									4	200#
5'-0"									4	200#
4'-0"									4	200#
3'-0"									4	200#
2'-0"									4	200#
1'-0"									4	200#
0'-0"									4	200#
16'-0"									4	200#
15'-0"									4	200#
14'-0"									4	200#
13'-0"									4	200#
12'-0"									4	200#
11'-0"									4	200#
10'-0"									4	200#
9'-0"									4	200#
8'-0"									4	200#
7'-0"									4	200#
6'-0"									4	200#
5'-0"									4	200#
4'-0"									4	200#
3'-0"									4	200#
2'-0"									4	200#
1'-0"									4	200#
0'-0"									4	200#
16'-0"									4	200#
15'-0"									4	200#
14'-0"									4	200#



- NOTES: 1. PROVIDE A DOUBLE TOP PLATE ALONG THE SIDE WALLS WHEN THE RAFTER SPACING DOES NOT MATCH THE WALL STUD SPACING.
 2. ACTUAL SKID SPACING MAY VARY PROVIDED THAT THE CENTER TO CENTER SPACING IS WITHIN THE MAX/MIN SPACING STATED.
 3. 2x6 FRAMING MAY BE SUBSTITUTED FOR THE 2x4 FRAMING SHOWN. THE SPACING OF THE 2x6 FRAMING SHALL BE AS SHOWN FOR THE 2x4.

BUILDING SECTIONS

WALL STUD SPACING SCHEDULE (REFER TO NOTE 1)	
WALL SIDING	STUD SPACING
5/8" T1-11 PLYWOOD	24" MAX
3/8" LP SMART PANEL	16" MAX
LP DUTCH LAP w/ OSB SHEATHING	16" MAX



4-16-21

LOFTED BARN--NORTH CAROLINA--2018 NCBC



PROJECT NO:	
DATE:	04-16-2021
DRAWN BY:	KLN
CHECKED BY:	KLN
REVISION:	

SHEET NUMBER
S-30-LB
 SCALE: 1/4" = 1'-0"



4-16-21

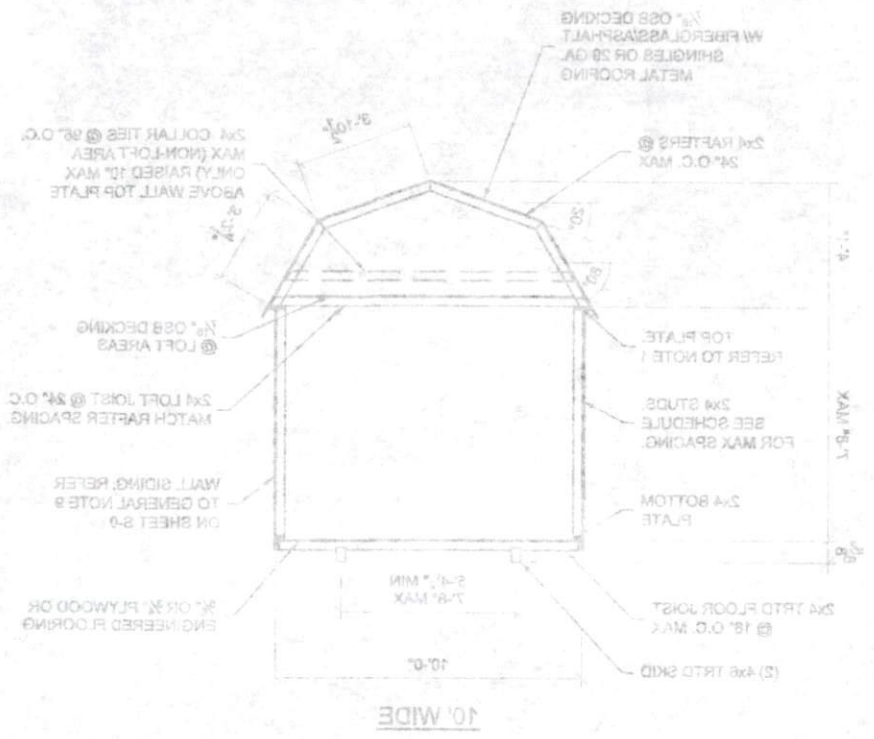
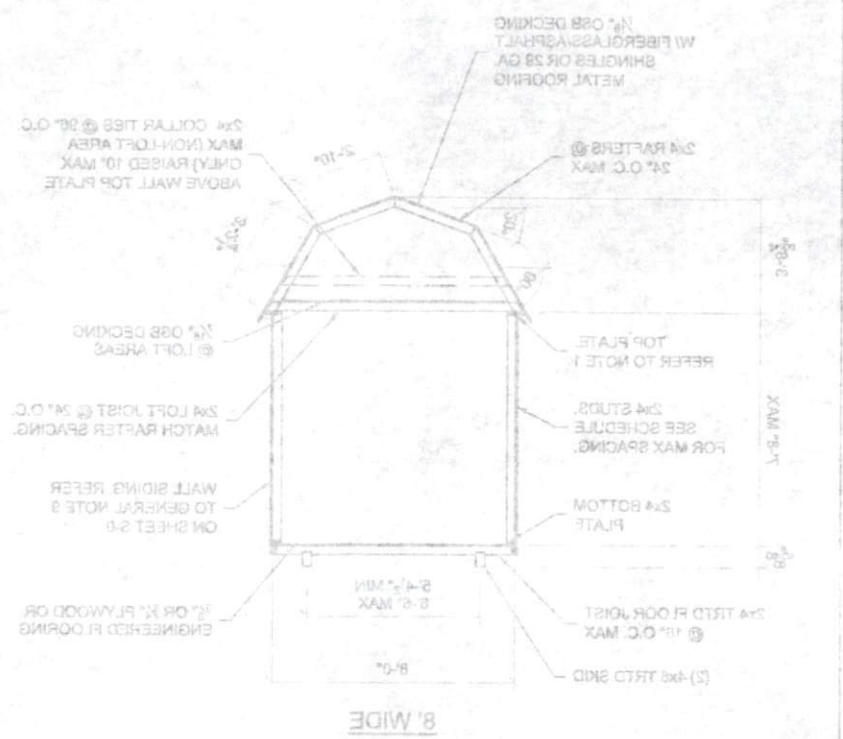
LOFTED BARN--NORTH CAROLINA--2018 NCBC

REVISION	
CHECKED BY: KLN	
DRAWN BY: KLN	
DATE: 04-18-2021	
PROJECT NO:	
SHEET NUMBER	3-30-LB

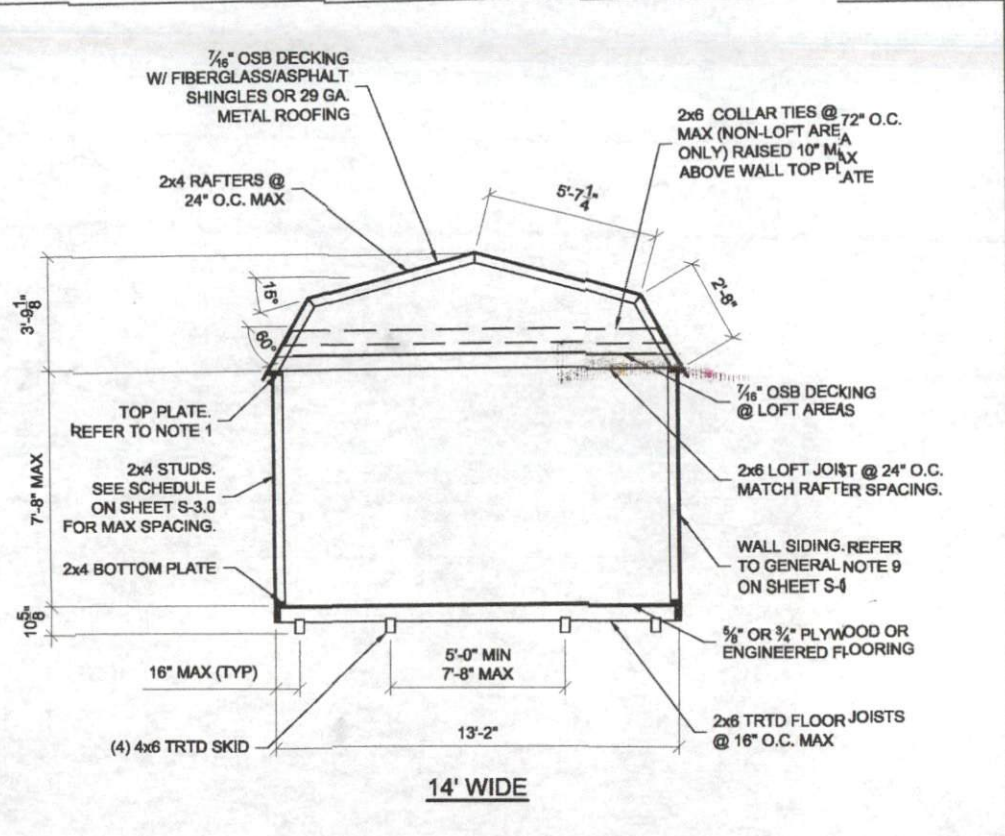
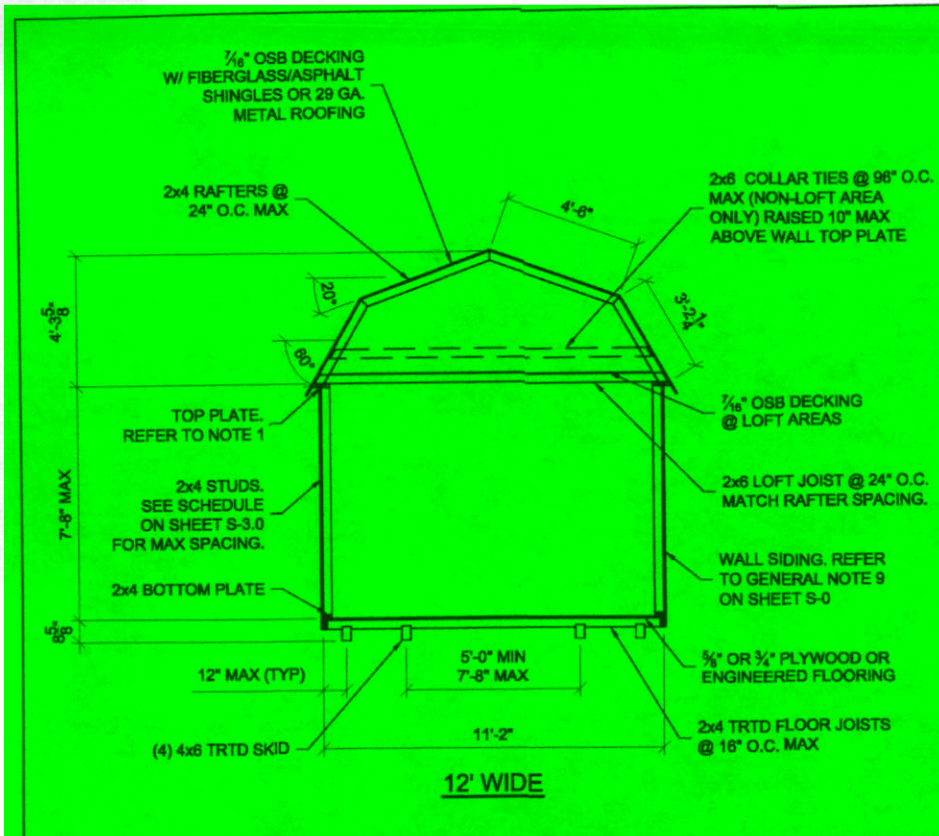


NOTES: 1. PROVIDE A DOUBLE TOP PLATE ALONG THE SIDE WALLS WHEN THE RAFTER SPACING DOES NOT MATCH THE WALL STUD SPACING.
 2. ACTUAL STUD SPACING MAY VARY PROVIDED THAT THE CENTER TO CENTER SPACING IS WITHIN THE MAXIMUM SPACING STATED.
 3. 2x6 FRAMING MAY BE SUBSTITUTED FOR THE 2x4 FRAMING SHOWN. THE SPACING OF THE 2x6 FRAMING SHALL BE AS SHOWN FOR THE 2x4.

BUILDING SECTIONS



WALL STUD SPACING SCHEDULE (REFER TO NOTE 1)	
WALL SIDING	
1/2" LP SMART PANEL	18" MAX
1/2" OR 3/4" PLYWOOD OR ENGINEERED R. COREING	24" MAX
STUD SPACING	



BUILDING SECTIONS

- NOTES: 1. PROVIDE A DOUBLE TOP PLATE ALONG THE SIDE WALLS WHEN THE RAFTER SPACING DOES NOT MATCH THE WALL STUD SPACING.
 2. ACTUAL SKID SPACING MAY VARY PROVIDED THAT THE CENTER TO CENTER SPACING IS WITHIN THE MAX/MIN SPACING STATED.
 3. 2x6 FRAMING MAY BE SUBSTITUTED FOR THE 2x4 FRAMING SHOWN. THE SPACING OF THE 2x6 FRAMING SHALL BE AS SHOWN FOR THE 2x4.

LOFTED BARN--NORTH CAROLINA--2018 NCBC

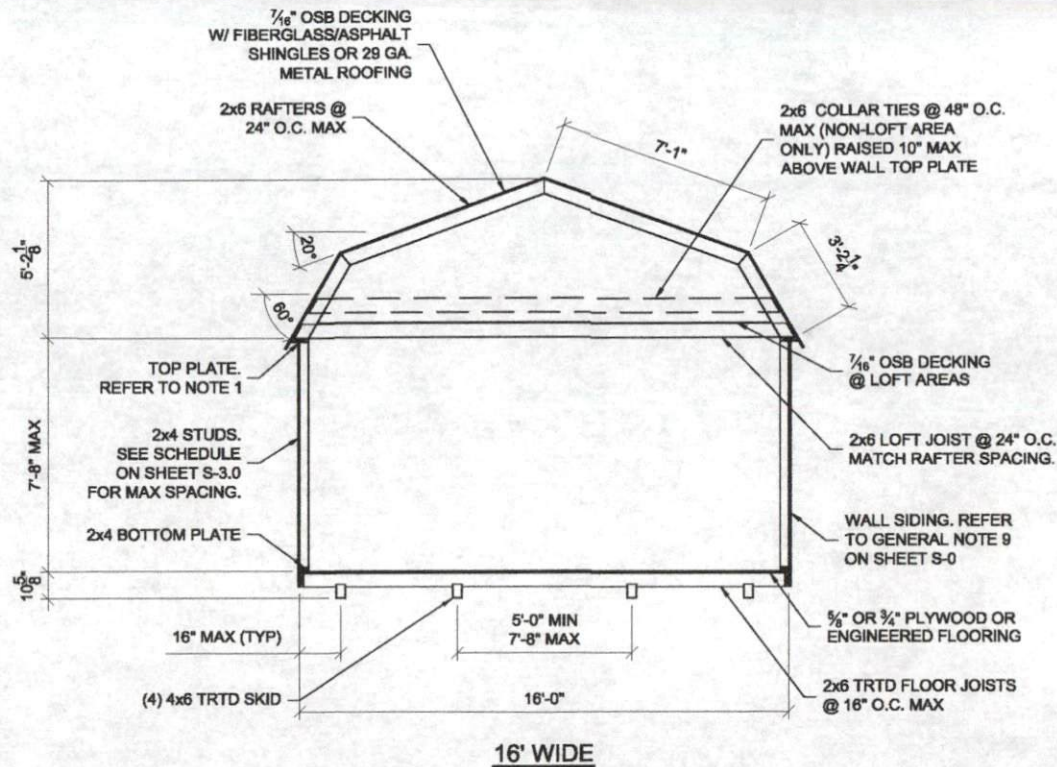


4-16-21



PROJECT NO:	
DATE:	04-16-2021
DRAWN BY:	KLN
CHECKED BY:	KLN
REVISION:	

SHEET NUMBER	
S-31-LB	
SCALE:	1/4" = 1'-0"



- NOTES: 1. PROVIDE A DOUBLE TOP PLATE ALONG THE SIDE WALLS WHEN THE RAFTER SPACING DOES NOT MATCH THE WALL STUD SPACING.
 2. ACTUAL SKID SPACING MAY VARY PROVIDED THAT THE CENTER TO CENTER SPACING IS WITHIN THE MAX/MIN SPACING STATED.
 3. 2x6 FRAMING MAY BE SUBSTITUTED FOR THE 2x4 FRAMING SHOWN. THE SPACING OF THE 2x6 FRAMING SHALL BE AS SHOWN FOR THE 2x4.

BUILDING SECTIONS



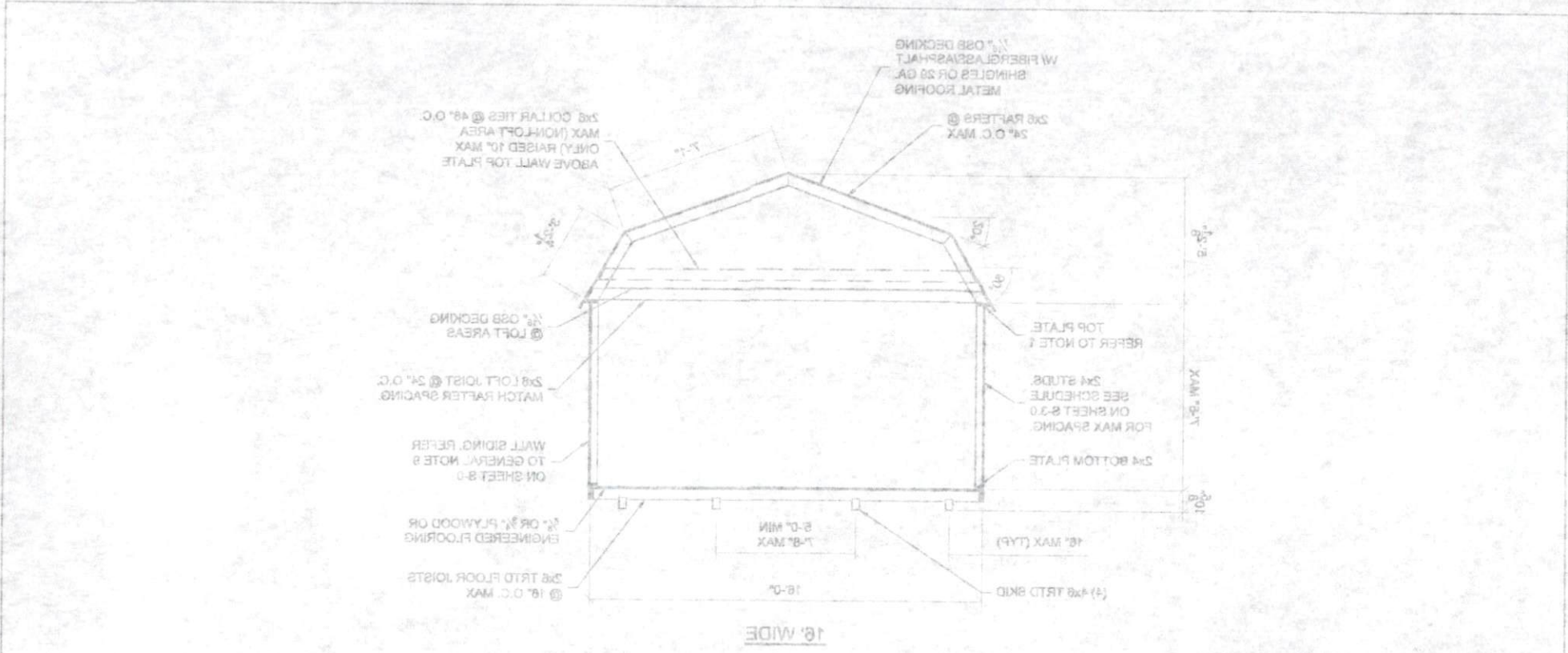
4-16-21

LOFTED BARN--NORTH CAROLINA--2018 NCBC



PROJECT NO:	
DATE:	04-16-2021
DRAWN BY:	KLN
CHECKED BY:	KLN
REVISION:	

SHEET NUMBER	
S-32-LB	
SCALE:	1/4" = 1'-0"



BUILDING SECTIONS

NOTES: 1. PROVIDE A DOUBLE TOP PLATE ALONG THE SIDE WALLS WHEN THE RAFTER SPACING DOES NOT MATCH THE WALL STUD SPACING.
 2. ACTUAL SKID SPACING MAY VARY PROVIDED THAT THE CENTER TO CENTER SPACING IS WITHIN THE MAXIMUM SPACING STATED.
 3. 2x8 FRAMING MAY BE SUBSTITUTED FOR THE 2x4 FRAMING SHOWN. THE SPACING OF THE 2x8 FRAMING SHALL BE AS SHOWN FOR THE 2x4

LOFTED BARN--NORTH CAROLINA--2018 NCBC



4-12-21

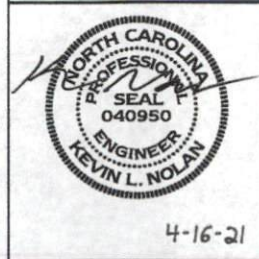
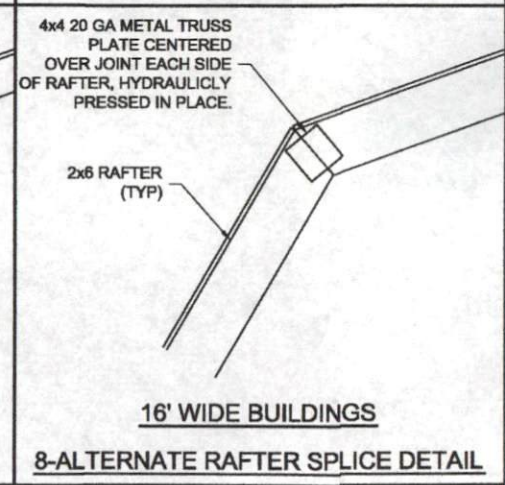
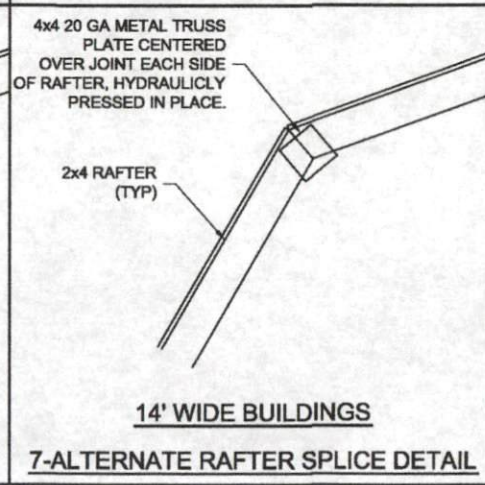
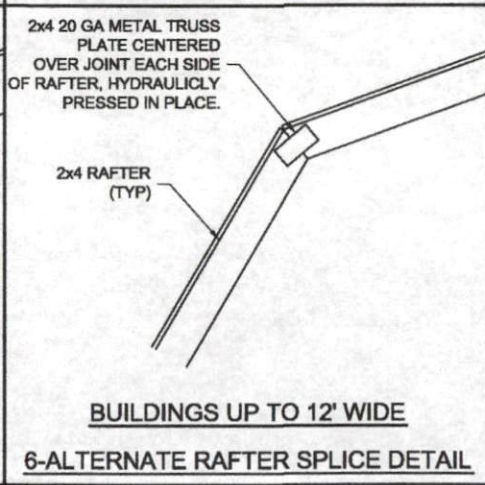
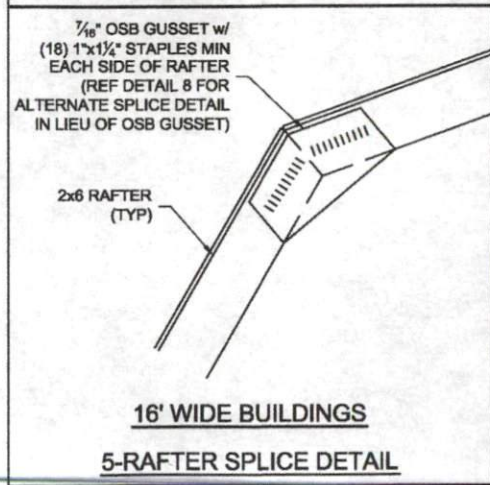
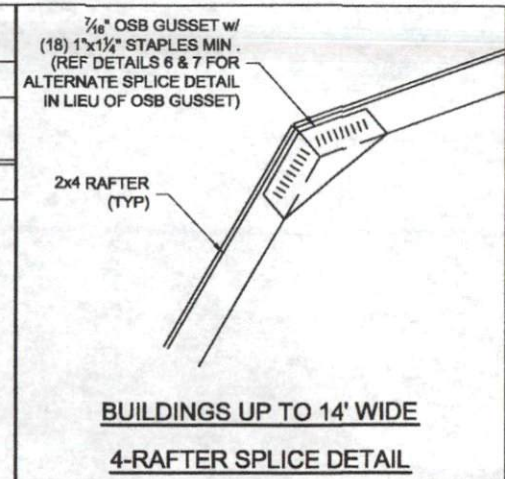
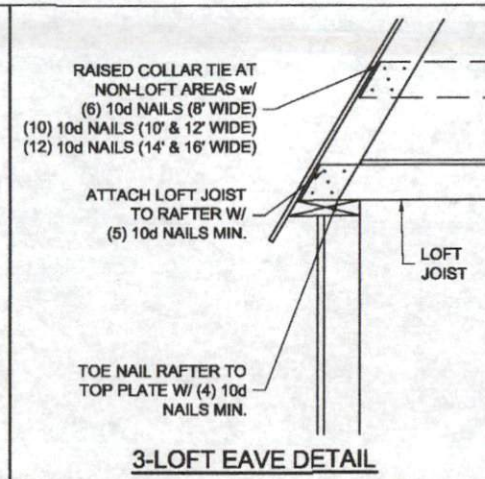
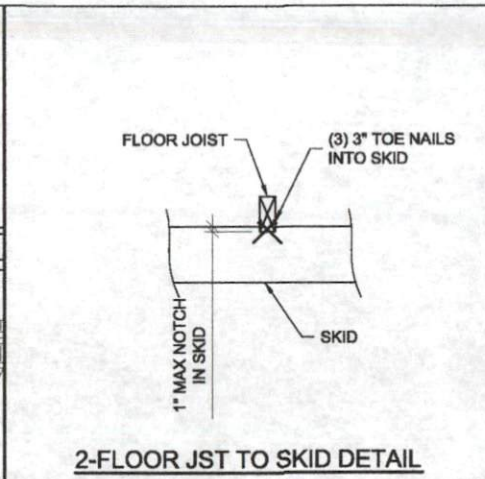
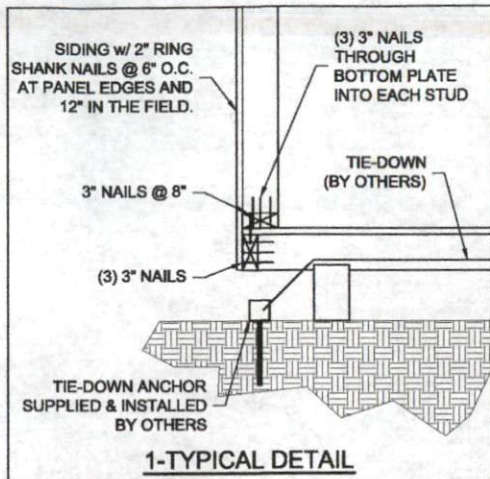


REVISION:	CHECKED BY: KLN
	DRAWN BY: KLN
	DATE: 04-16-2021
PROJECT NO.:	

SCALE: 1/4" = 1'-0"

SHEET NUMBER

2-35-1B



LOFTED BARN--NORTH CAROLINA--2018 NCBC



PROJECT NO:	
DATE:	04-16-2021
DRAWN BY:	KLN
CHECKED BY:	KLN
REVISION:	

SHEET NUMBER	S-4.0-LB
SCALE:	1"=1'-0"



H-16-21

LOFTED BARN--NORTH CAROLINA--2018 NCBC

PROJECT NO.	04-16-2021
DATE	
DRAWN BY:	KLN
CHECKED BY:	KLN
REVISION	



SCALE: 1"=1'-0"

2-40-1B

SHEET NUMBER

8- RAFTER SPICE DETAIL

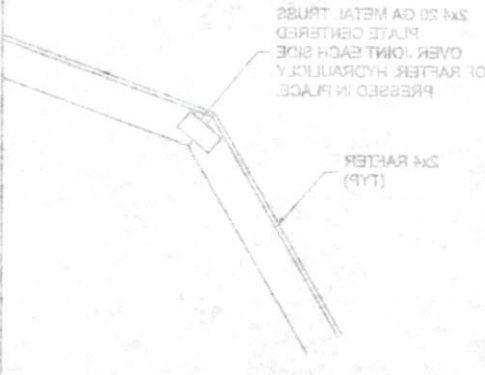


16' WIDE BUILDINGS

IN LIEU OF OSB GUSSET W/ (16) 1"x1/2" STAPLES MIN EACH SIDE OF RAFTER (SEE DETAIL 6 FOR ALTERNATE SPICE DETAIL)

2x8 RAFTER (TYP)

8- ALTERNATE RAFTER SPICE DETAIL

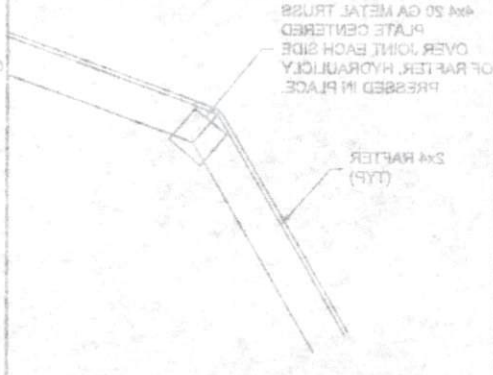


BUILDINGS UP TO 12' WIDE

IN LIEU OF OSB GUSSET W/ (16) 1"x1/2" STAPLES MIN OVER JOINT EACH SIDE OF RAFTER HYDRAULICALLY PRESSED IN PLACE

2x6 RAFTER (TYP)

7- ALTERNATE RAFTER SPICE DETAIL

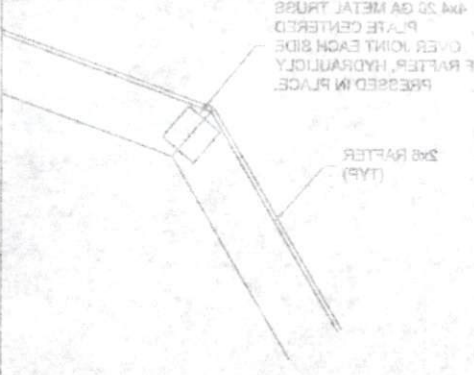


14' WIDE BUILDINGS

IN LIEU OF OSB GUSSET W/ (16) 1"x1/2" STAPLES MIN OVER JOINT EACH SIDE OF RAFTER HYDRAULICALLY PRESSED IN PLACE

2x6 RAFTER (TYP)

8- ALTERNATE RAFTER SPICE DETAIL

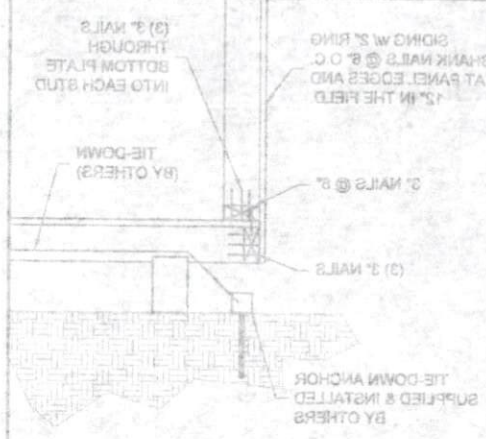


16' WIDE BUILDINGS

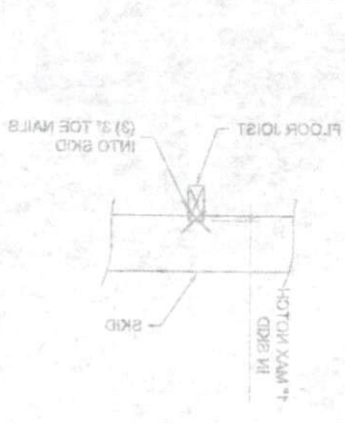
IN LIEU OF OSB GUSSET W/ (16) 1"x1/2" STAPLES MIN OVER JOINT EACH SIDE OF RAFTER HYDRAULICALLY PRESSED IN PLACE

2x8 RAFTER (TYP)

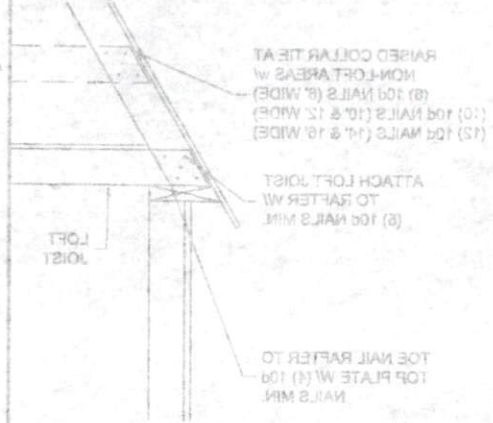
1- TYPICAL DETAIL



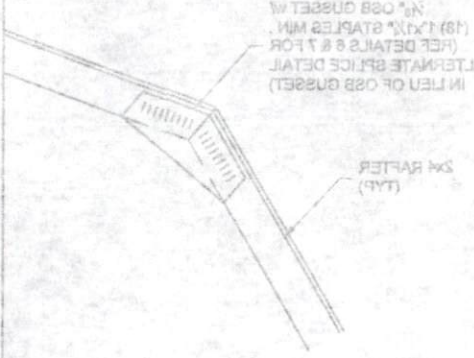
2- FLOOR JOIST TO SKID DETAIL



3- LOFT EAVE DETAIL

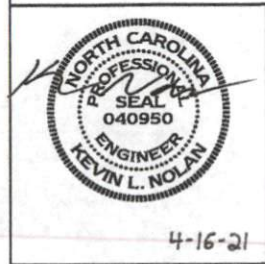
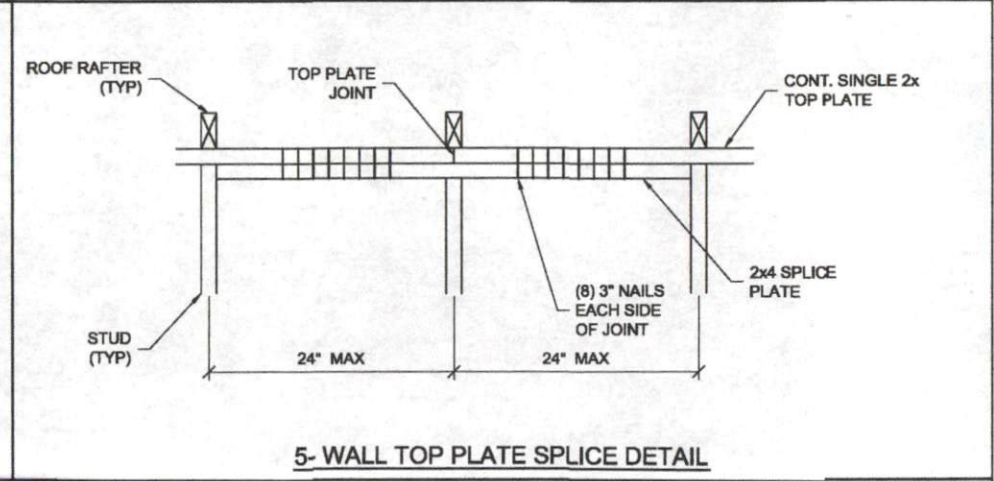
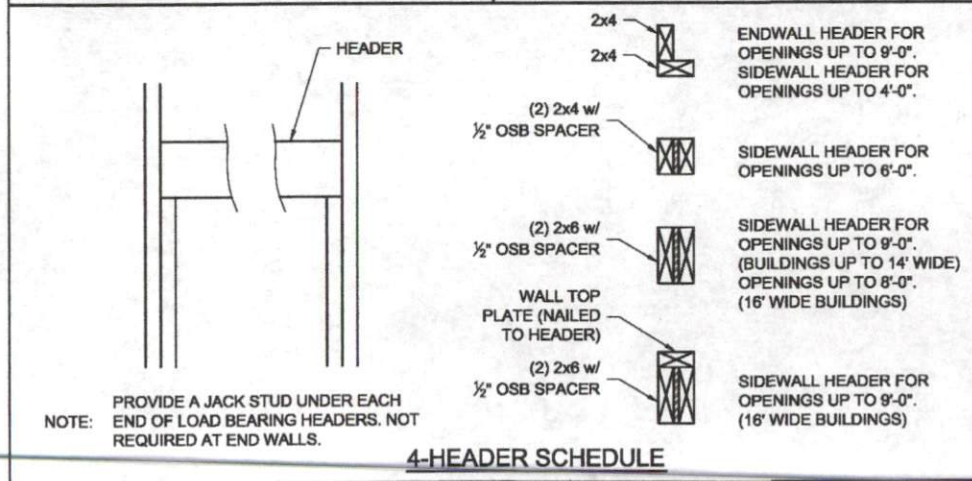
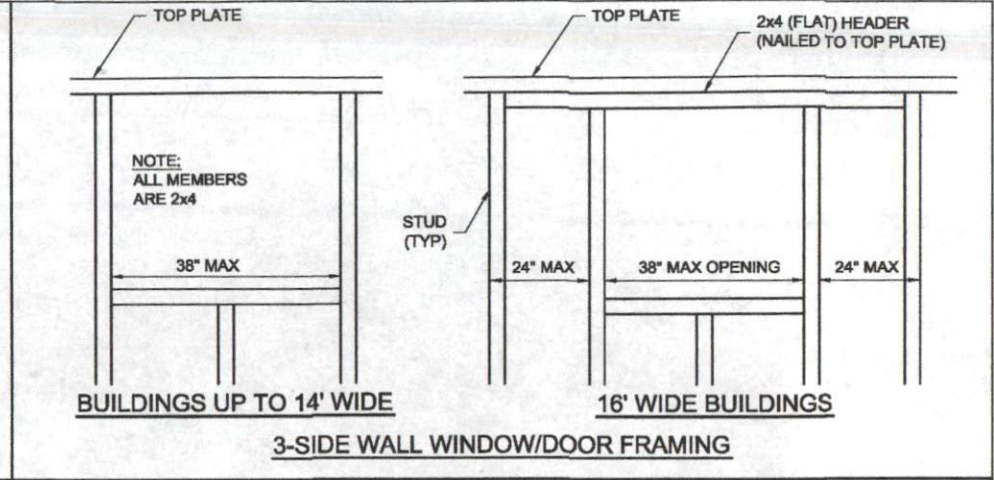
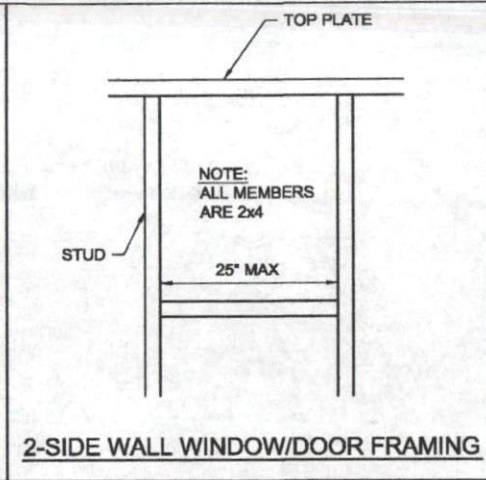
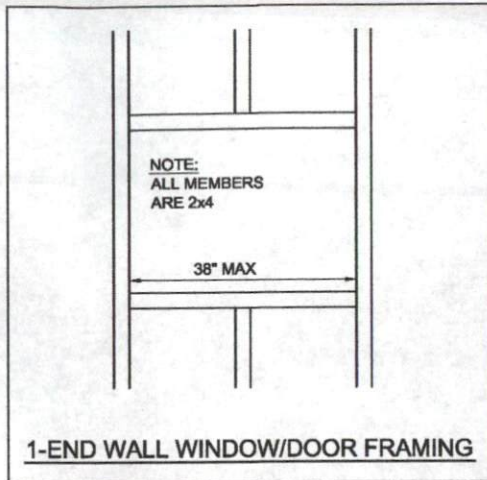


4- RAFTER SPICE DETAIL
BUILDINGS UP TO 14' WIDE



IN LIEU OF OSB GUSSET W/ (16) 1"x1/2" STAPLES MIN (SEE DETAIL 6 & 7 FOR ALTERNATE SPICE DETAIL)

2x6 RAFTER (TYP)



LOFTED BARN--NORTH CAROLINA--2018 NCBC



PROJECT NO:	
DATE:	04-16-2021
DRAWN BY:	KLN
CHECKED BY:	KLN
REVISION:	

SHEET NUMBER	S-41-LB
SCALE:	1"=1'-0"



4-18-21



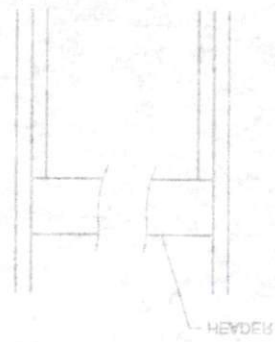
REVISION:	
CHECKED BY:	KGI
DRAWN BY:	KGI
DATE:	04-18-2021
PROJECT NO.:	

SCALE: 1/4"=1'-0"
2-A-1-B
 SHEET NUMBER

LOFTED BARI--NORTH CAROLINA--2018 NCBC

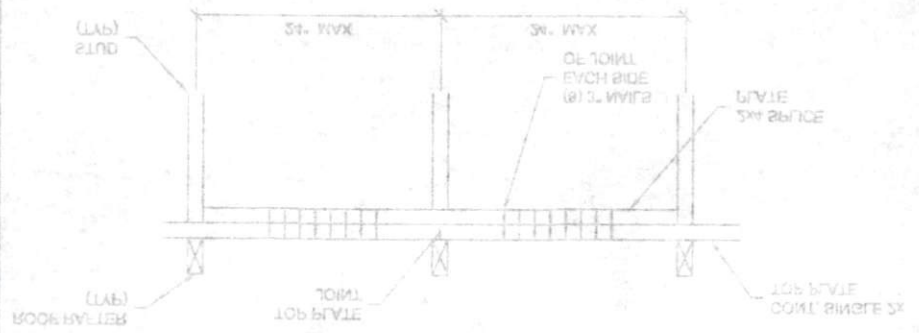
4-HEADER SCHEDULE

NOTE: RECEIVED W/ END W/TT'S. END OF LOFT BEARING HEADERS NOT PROVIDE A LOCK STUD UNDER EACH

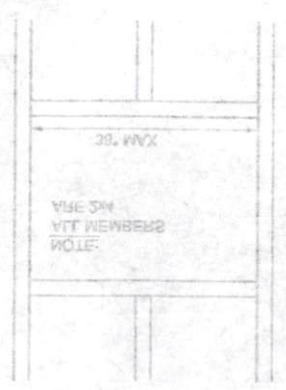


- 1/2" OSG SPACER (2) 3/4" W/TT TO HEADER / PLATE (IMAGED W/TT TOP) (16" WIDE BUILDINGS) OPENINGS UP TO 8'-0" SIDEWALL HEADER FOR
- 3/4" OSG SPACER (2) 3/4" W/TT TO HEADER / PLATE (IMAGED W/TT TOP) (14" WIDE BUILDINGS) OPENINGS UP TO 14' WIDE SIDEWALL HEADER FOR
- 1" OSG SPACER (2) 3/4" W/TT TO HEADER / PLATE (IMAGED W/TT TOP) OPENINGS UP TO 8'-0" SIDEWALL HEADER FOR
- 1 1/2" OSG SPACER (2) 3/4" W/TT TO HEADER / PLATE (IMAGED W/TT TOP) OPENINGS UP TO 4'-0" SIDEWALL HEADER FOR OPENINGS UP TO 8'-0" ENDWALL HEADER FOR

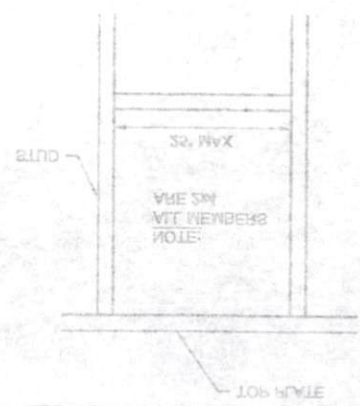
2-WALL TOP PLATE SPICE DETAIL



1-END WALL WINDOW/DOOR FRAMING

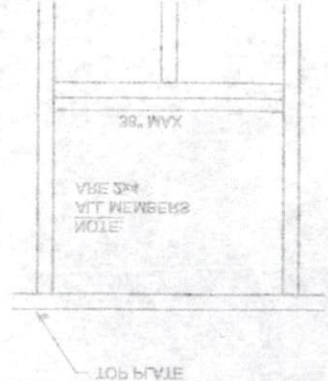


2-SIDE WALL WINDOW/DOOR FRAMING



3-SIDE WALL WINDOW/DOOR FRAMING

BUILDINGS UP TO 14' WIDE



16' WIDE BUILDINGS

