

STRUCTURAL DESIGN

ENCLOSED BUILDING

**MAXIMUM 30'-0" WIDE X 14'- 0" EAVE HEIGHT-
BOX EAVE FRAME AND BOW FRAME**

14 January 2021

Revision 0

M&A Project No. 20320S

Prepared for:

Russell L Smith-CarportsNSheds, LLC

1644 Bartley Rd.

Lagrange, GA 30240

Prepared by:

Moore and Associates Engineering and Consulting, Inc.

1009 East Avenue

North Augusta, SC 29841

401 S. Main Street, Suite 200

Mount Airy, NC 27030

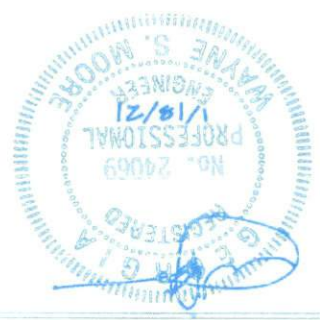


**MOORE AND ASSOCIATES
ENGINEERING AND CONSULTING**

DATE: 1-14-21	DATE: 1-14-21	DATE: 1-14-21	DATE: 1-14-21
PROJECT: NEW VSM	PROJECT: NEW VSM	PROJECT: NEW VSM	PROJECT: NEW VSM
CHECKED BY: PSH	CHECKED BY: PSH	CHECKED BY: PSH	CHECKED BY: PSH
ISSUED BY: LT	ISSUED BY: LT	ISSUED BY: LT	ISSUED BY: LT

MOORE AND ASSOCIATES
ENGINEERING AND CONSULTING, INC.

CARRIQUETSHEIDS, LLC
158 GATHERHOUSE LN.
DOHSON, NC 27017



DRAWING INDEX

SHEET 1	PE SEAL COVER SHEET
SHEET 2	DRAWING INDEX
SHEET 3	INSTALLATION NOTES AND SPECIFICATIONS
SHEET 4	TYPICAL SIDE AND END ELEVATIONS
SHEET 5	TYPICAL RAFTER/COLUMN FRAME AND SIDE FRAMING SECTION (BOX EAVE RAFTER)
SHEET 5A	TYPICAL RAFTER/COLUMN FRAME AND SIDE FRAMING SECTION (BOX EAVE RAFTER)
SHEET 6	COLUMN CONNECTION DETAILS (BOX EAVE RAFTER)
SHEET 7	TYPICAL RAFTER/COLUMN FRAME AND SIDE FRAMING SECTION (BOW EAVE RAFTER)
SHEET 7A	TYPICAL RAFTER/COLUMN FRAME AND SIDE FRAMING SECTION (BOW EAVE RAFTER)
SHEET 8	COLUMN CONNECTION DETAILS (BOW EAVE RAFTER)
SHEET 9	BASE RAIL ANCHORAGE OPTIONS
SHEET 10	TYPICAL END WALL AND SIDE WALL FRAMING SECTIONS (BOX EAVE RAFTER)
SHEET 11	TYPICAL END WALL AND SIDE WALL FRAMING SECTIONS (BOW EAVE RAFTER)
SHEET 12	CONNECTION DETAILS
SHEET 13	CONNECTION DETAILS
SHEET 14	LEAN-TO OPTIONS (BOX EAVE RAFTER)
SHEET 15	LEAN-TO OPTIONS (BOW EAVE RAFTER)
SHEET 16	VERTICAL ROOF/SIDING OPTION END AND SIDE ELEVATION AND SECTION (BOX EAVE RAFTER)
SHEET 17	SIDE WALL AND END WALL HEADER OPTIONS

MOORE AND ASSOCIATES ENGINEERING AND CONSULTING, INC.	DRAWN BY: LT	CARPORTSNSHEDS, LLC 158 GATEHOUSE LN. DOBSON, NC 27017		
	CHECKED BY: PDH	30'-0" x 14'-0" ENCLOSED STRUCTURE		
THIS DOCUMENT IS THE PROPERTY OF MOORE AND ASSOCIATES ENGINEERING AND CONSULTING. THE UNAUTHORIZED REPRODUCTION, COPYING, OR OTHERWISE USE OF THIS DOCUMENT IS STRICTLY PROHIBITED AND ANY INFRACTION THEREUPON MAY BE SUBJECT TO LEGAL ACTION.	PROJECT MGR: WSM	DATE: 1-14-21	SCALE: NTS	JOB NO: 202005
	CLIENT: CARPORTSNSHEDS	SHT. 2	DWG. NO: SK-3	REV: 0

INSTALLATION NOTES AND SPECIFICATIONS

1. DESIGN IS FOR MAXIMUM 30'-0" WIDE x 14'-0" EAVE HEIGHT ENCLOSED STRUCTURES.
2. DESIGN WAS DONE IN ACCORDANCE WITH THE 2018 NORTH CAROLINA BUILDING CODE, 2018 INTERNATIONAL BUILDING CODE (IBC) 2015 IBC AND 2012 IRC.
3. DESIGN LOADS ARE AS FOLLOWS:
 - A) DEAD LOAD = 15 PSF
 - B) LIVE LOAD = 12 PSF
 - C) GROUND SNOW LOAD = 30 PSF (< 24'-0"), 35 PSF (24'-0" < W < 30'-0")

NOTE: UNBALANCED SNOW LOAD DUE TO DRIFTING HAS NOT BEEN EVALUATED.
4. 3-SECOND GUST ULTIMATE WIND SPEED (V_{ULT}) = < 140 MPH (NOMINAL WIND SPEED = < 108 MPH)
5. MAXIMUM RAFTER/COLUMN AND END COLUMN SPACING = 50 FEET (UNLESS NOTED OTHERWISE)
6. ENDWALL COLUMNS (POSTS) AND SIDE WALL COLUMNS ARE EQUIVALENT IN SIZE AND SPACING (UNLESS NOTED OTHERWISE).
7. RISK CATEGORY I
8. WIND EXPOSURE CATEGORY B.
9. SPECIFICATIONS APPLICABLE TO 29 GAUGE METAL PANELS FASTENED DIRECTLY TO 2-1/2" x 2-1/2" - 14 GAUGE TUBE STEEL (TS) FRAMING MEMBERS (UNLESS NOTED OTHERWISE). 2-1/4" x 2-1/4" - 12 GAUGE TS MAY BE USED AS OPTIONAL FRAMING MEMBERS.
10. AVERAGE FASTENER SPACING ON-CENTERS ALONG RAFTERS OR HAT CHANNELS, AND COLUMNS (INTERIOR OR END) = 10 INCHES.
11. FASTENERS CONSIST OF #12-14x3/4" SELF-DRILLING FASTENER (SDF), USE CONTROL SEAL WASHER WITH EXTERIOR FASTENERS. SPECIFICATIONS APPLICABLE ONLY FOR MEAN ROOF HEIGHT OF 16 FEET OR LESS, AND ROOF SLOPES OF 14" (3:12 PITCH) OR LESS. SPACING REQUIREMENTS FOR OTHER ROOF HEIGHTS AND/OR SLOPES MAY VARY. ROOF SLOPES LESS THAN 3:12 REQUIRE USE OF JOINT SEALANT.
12. ANCHORS SHALL BE INSTALLED THROUGH BASE RAIL WITHIN 6" OF EACH COLUMN.
13. STANDARD GROUND ANCHORS (SOIL NAILS) CONSIST OF #4 REBAR W/ WELDED NUT x 30" LONG AND MAY ONLY BE USED IN CONJUNCTION WITH OTHER (OPTIONAL) ANCHOR DEVICES AND ONLY IN SUITABLE SOILS. OPTIONAL ANCHORAGE MAY BE USED IN SUITABLE SOILS AND MUST BE USED IN UNSUITABLE SOILS AS NOTED. COORDINATE WITH LOCAL CODES/ORDINANCES REGARDING MINIMUM LENGTH FOR FROST DEPTH PROTECTION.
14. WIND FORCES GOVERN OVER SEISMIC FORCES. SEISMIC PARAMETERS ANALYZED ARE:
 - SOIL STIFF CLASS = D
 - RISK CATEGORY I
 - R = 3.25 $I_E = 10$
 - $S_{DS} = 2.039 g$ $V = 0.5W$
 - $S_{D1} = 1.258 g$

**MOORE AND ASSOCIATES
ENGINEERING AND CONSULTING, INC.**

DRAWN BY: LT

CHECKED BY: PDH

PROJECT MGR: WSM

CLIENT: CARPORTSNSHEDS

CARPORTSNSHEDS, LLC
158 GATEHOUSE LN.
DOBSON, NC 27017

30'-0" x 14'-0" ENCLOSED STRUCTURE

DATE: 1-14-21

SCALE: NTS

JOB NO: 20320S

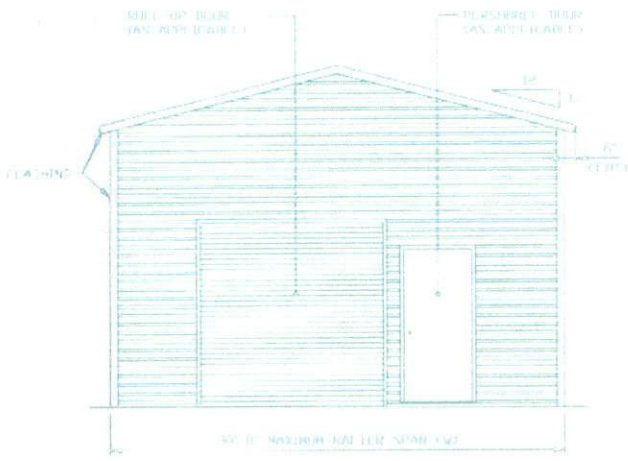
SHT. 3

DWG. NO: SK-3

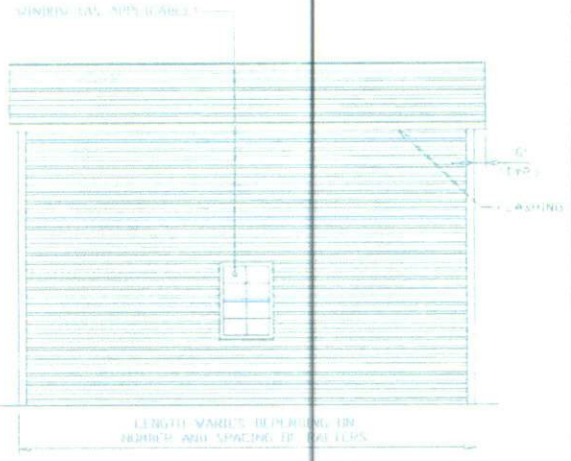
REV: 0

THIS DOCUMENT IS THE PROPERTY OF MOORE AND ASSOCIATES ENGINEERING AND CONSULTING. THE UNAUTHORIZED REPRODUCTION, COPYING, OR OTHERWISE USE OF THIS DOCUMENT IS STRICTLY PROHIBITED AND ANY INFRINGEMENT THEREUPON MAY BE SUBJECT TO LEGAL ACTION.

BOX EAVE FRAME RAFTER STRUCTURE

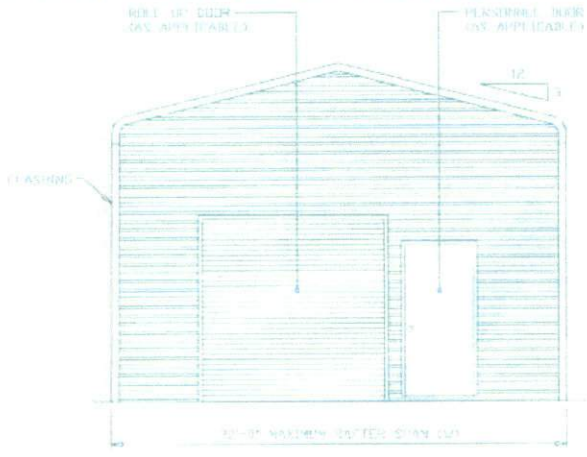


TYPICAL END ELEVATION
SCALE: NTS

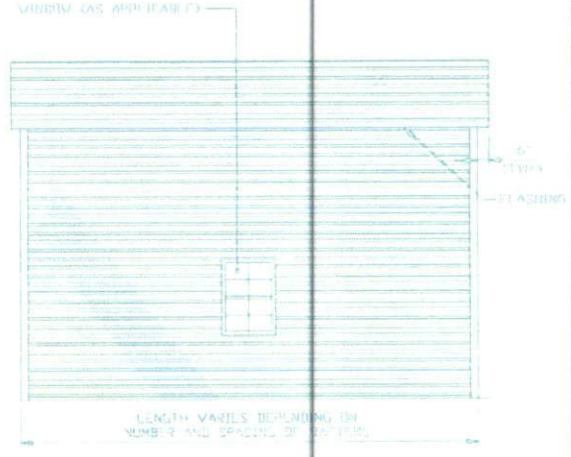


TYPICAL SIDE ELEVATION
SCALE: NTS

BOX EAVE FRAME RAFTER STRUCTURE

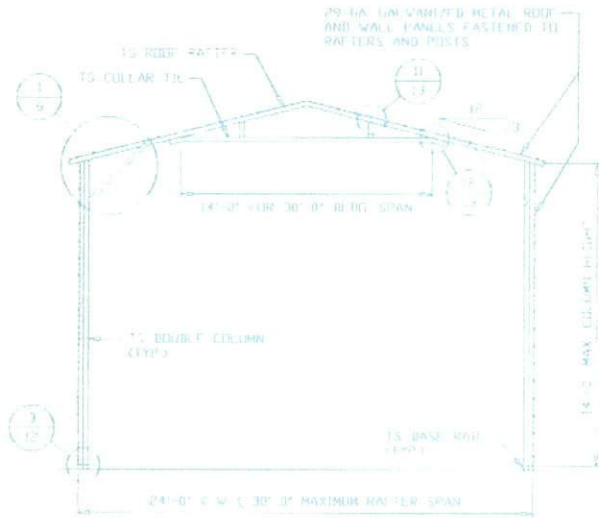


TYPICAL END ELEVATION
SCALE: NTS

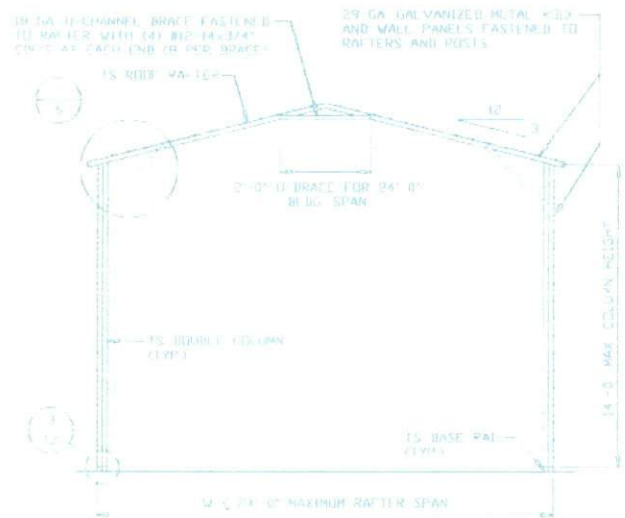


TYPICAL SIDE ELEVATION
SCALE: NTS

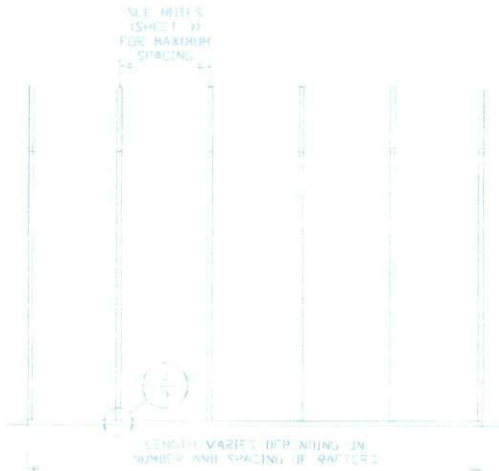
<p>MOORE AND ASSOCIATES ENGINEERING AND CONSULTING, INC.</p>	DRAWN BY: LT	<p>CARPORTS/SHEDS, LLC 108 GATEHOUSE LN. DOBSON, NC 27017</p>		
	CHECKED BY: PWH	<p>30'-0" X 10'-0" ENCLOSED STRUCTURE</p>		
<p>THIS DOCUMENT IS THE PROPERTY OF MOORE AND ASSOCIATES ENGINEERING AND CONSULTING. THE UNAUTHORIZED REPRODUCTION, COPYING, OR OTHERWISE USE OF THIS DOCUMENT IS STRICTLY PROHIBITED AND ANY INFRACTION THEREUPON MAY BE SUBJECT TO LEGAL ACTION.</p>	PROJECT: HGR VON	DATE: 1-24-20	SCALE: NTS	JOB: HGR 200000
	CLIENT: CARPORTS/SHEDS	SHEET: 4	DATE: NO SK-3	REV: 0



TYPICAL RAFTER/COLUMN FRAME SECTION
SCALE: NTS



TYPICAL RAFTER/COLUMN FRAME SECTION
SCALE: NTS



TYPICAL RAFTER/COLUMN SIDE FRAMING SECTION
SCALE: NTS

**MOORE AND ASSOCIATES
ENGINEERING AND CONSULTING, INC.**

DRAWN BY: LT

CHECKED BY: PDH

PROJECT MGR: WSH

CLIENT: CARPORTS/SHEDS

CARPORTS/SHEDS, LLC

158 GATEHOUSE LN.

DOBSON, NC 27017

30'-0" x 14'-0" ENCLOSED STRUCTURE

DATE: 1-14-21

SCALE: NTS

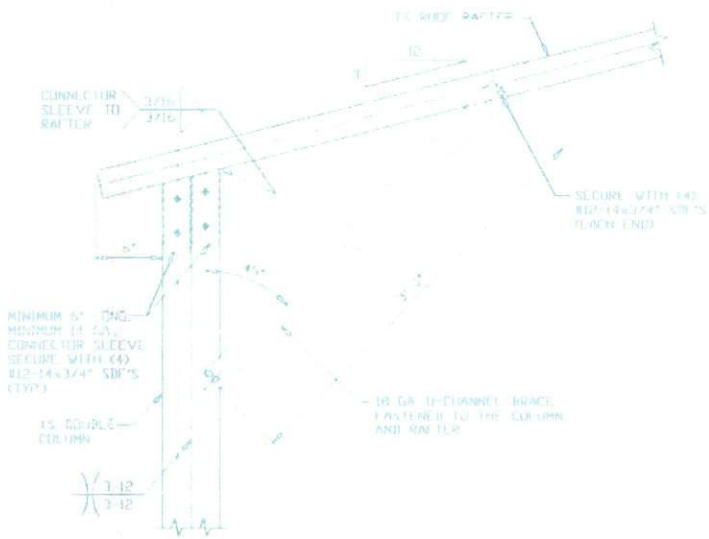
JOB NO: 203005

SHEET: 5

20% HD SK-3

REV: 0

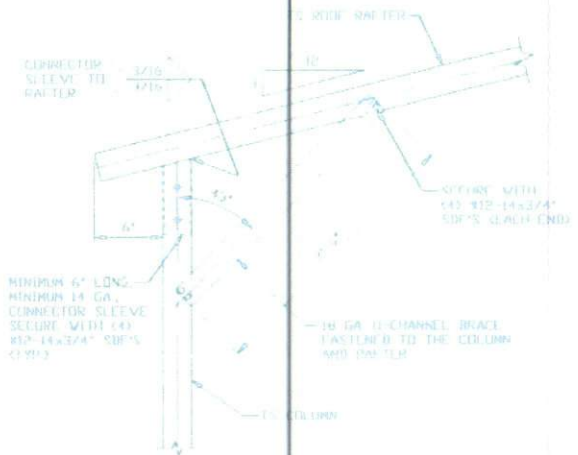
THIS DOCUMENT IS THE PROPERTY OF MOORE AND ASSOCIATES ENGINEERING AND CONSULTING. THE UNAUTHORIZED REPRODUCTION, COPYING, OR OTHERWISE USE OF THIS DOCUMENT IS STRICTLY PROHIBITED AND ANY INFRINGEMENT THEREUPON MAY BE SUBJECT TO LEGAL ACTION.



BOX EAVE RAFTER/CORNER POST CONNECTION DETAIL FOR HEIGHTS 11'-0" < TO ≤ 14'-0"

1

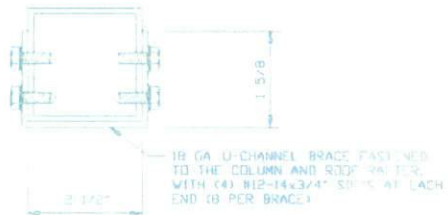
SCALE: NTS



BOX EAVE RAFTER/CORNER POST CONNECTION DETAIL FOR HEIGHTS < 11'-0"

1A

SCALE: NTS



BRACE SECTION
SCALE: NTS

**MOORE AND ASSOCIATES
ENGINEERING AND CONSULTING, INC.**

DRAWN BY: LY

CHECKED BY: PBN

PROJECT MGR: WSH

CLIENT: CAMPBORTNSHEDS

CAMPBORTNSHEDS, LLC
158 GATEHOUSE LN.
DOBSON, NC 27017

30'-0" x 18'-0" ENCLOSED STRUCTURE

DATE: 1-14-92

DRAWN: KYS

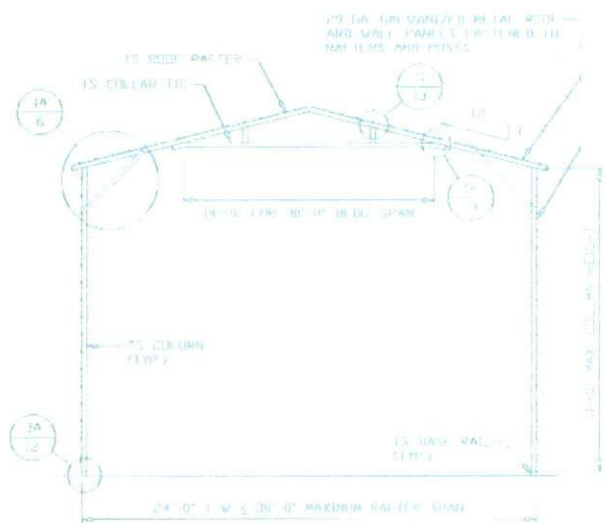
JOB NO: P02815

SHT. 6

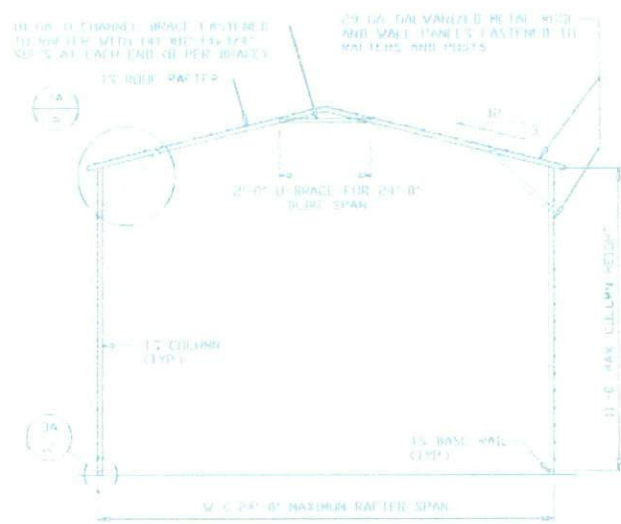
10% NO SK-3

REV: 0

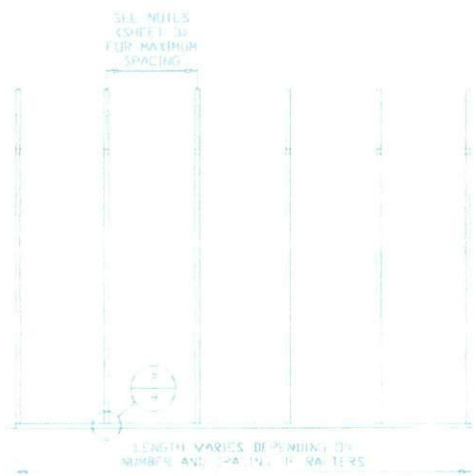
THIS DOCUMENT IS THE PROPERTY OF MOORE AND ASSOCIATES ENGINEERING AND CONSULTING. THE UNAUTHORIZED REPRODUCTION, COPYING, OR OTHERWISE USE OF THIS DOCUMENT IS STRICTLY PROHIBITED AND ANY INFRINGEMENT THEREUPON MAY BE SUBJECT TO LEGAL ACTION.



TYPICAL RAFTER/COLUMN FRAME SECTION
SCALE: NTS



TYPICAL RAFTER/COLUMN FRAME SECTION
SCALE: NTS



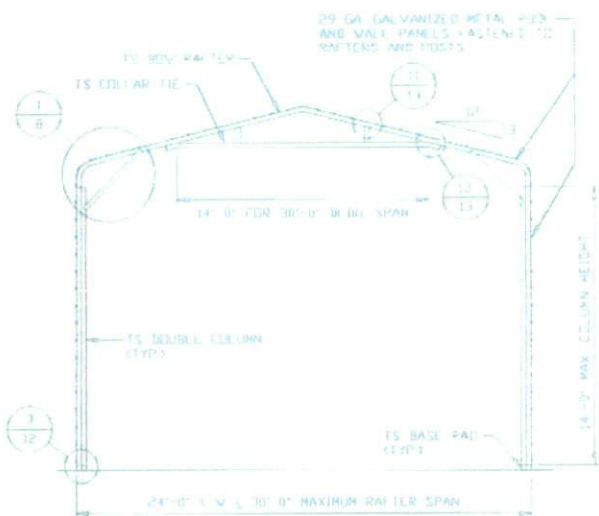
TYPICAL RAFTER/COLUMN SIDE FRAMING SECTION
SCALE: NTS

**MOORE AND ASSOCIATES
ENGINEERING AND CONSULTING, INC.**

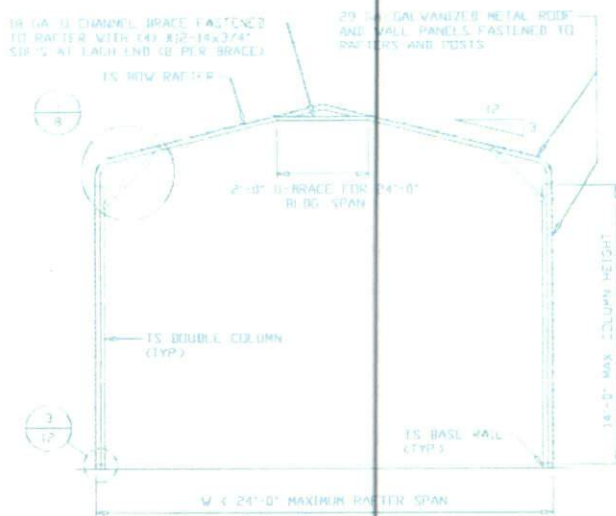
DRAWN BY: LT
CHECKED BY: PDH
PROJECT NO: WSM
CLIENT: CARPORTSHEDS

CARPORTSHEDS, LLC
158 GATEHOUSE LN.
DOBSON, NC 27017
30'-0" x 14'-0" ENCLOSED STRUCTURE
DATE: 1-14-21
SCALE: NTS
JOB NO: 203205
SHT. 5A
DWG. NO. SK-3
REV: 0

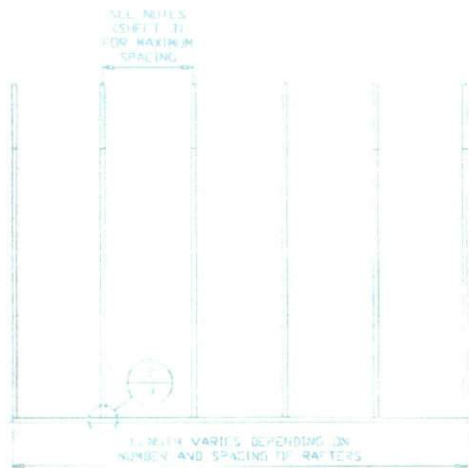
THIS DOCUMENT IS THE PROPERTY OF MOORE AND ASSOCIATES ENGINEERING AND CONSULTING. THE UNAUTHORIZED REPRODUCTION, COPYING, OR OTHERWISE USE OF THIS DOCUMENT IS STRICTLY PROHIBITED AND ANY INFRINGEMENT THEREUPON MAY BE SUBJECT TO LEGAL ACTION.



TYPICAL RAFTER/COLUMN FRAME SECTION
SCALE: NTS



TYPICAL RAFTER/COLUMN FRAME SECTION
SCALE: NTS



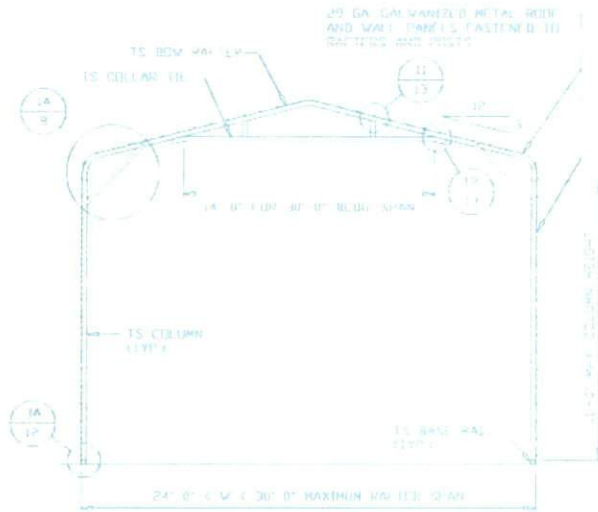
TYPICAL RAFTER/COLUMN SIDE FRAMING SECTION
SCALE: NTS

**MOORE AND ASSOCIATES
ENGINEERING AND CONSULTING, INC.**

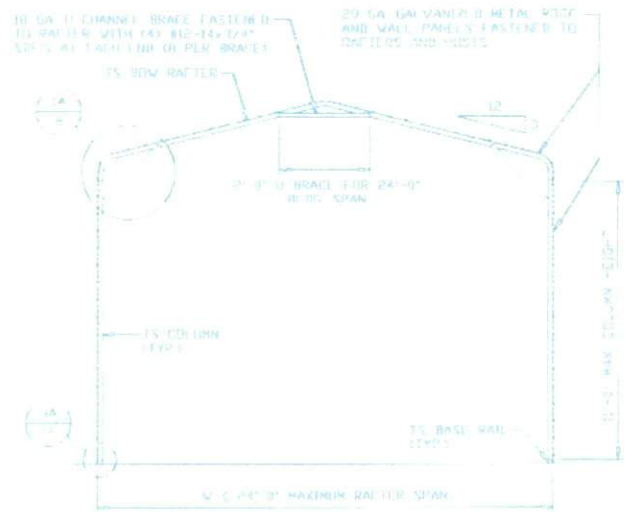
DRAWN BY: LT
CHECKED BY: PIH
PROJECT NO: VSH
CLIENT: CARPORTS/SHEDS

CARPORTS/SHEDS, LLC
158 GATEHOUSE LN.
DOBSON, NC 27017
30'-0" x 11'-0" ENCLOSED STRUCTURE
DATE: 1-14-21
SCALE: NTS
JOB NO: 202005
SHEET: 7
S/C: NO SK-3
REV: 0

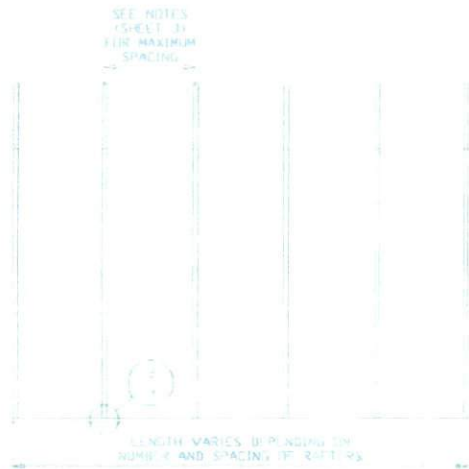
THIS DOCUMENT IS THE PROPERTY OF MOORE AND ASSOCIATES ENGINEERS AND CONSULTANTS, INC. IT IS TO BE USED ONLY FOR THE PROJECT AND SITE SPECIFICALLY IDENTIFIED HEREIN. ANY REUSE OR REPRODUCTION OF THIS DOCUMENT IS STRICTLY PROHIBITED AND ANY REPRODUCTION THEREOF MAY BE SUBJECT TO LEGAL ACTION.



TYPICAL RAFTER/COLUMN FRAME SECTION
SCALE: NTS



TYPICAL RAFTER/COLUMN FRAME SECTION
SCALE: NTS



TYPICAL RAFTER/COLUMN SIDE FRAMING SECTION
SCALE: NTS

**MOORE AND ASSOCIATES
ENGINEERING AND CONSULTING, INC.**

DRAWN BY: LT

CHECKED BY: PJM

PROJECT: HGO WSH

CLIENT: CARPORTS/SHEDS

CARPORTS/SHEDS, LLC

158 GATEHOUSE LN

DOBSON, NC 27017

30'-0" x 14'-0" ENCLOSED STRUCTURE

DATE: 1-15-12

SCALE: NTS

JOB NO: 203205

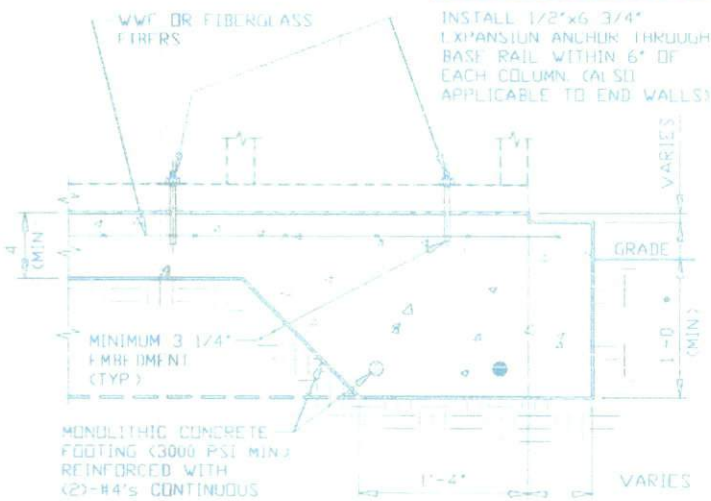
REV: 7A

REV: NO SK-3

REV: D

THIS DOCUMENT IS THE PROPERTY OF MOORE AND ASSOCIATES ENGINEERING AND CONSULTING. THE UNAUTHORIZED REPRODUCTION, COPYING, OR OTHERWISE USE OF THIS DOCUMENT IS STRICTLY PROHIBITED AND ANY INFRINGEMENT THEREUPON MAY BE SUBJECT TO LEGAL ACTION.

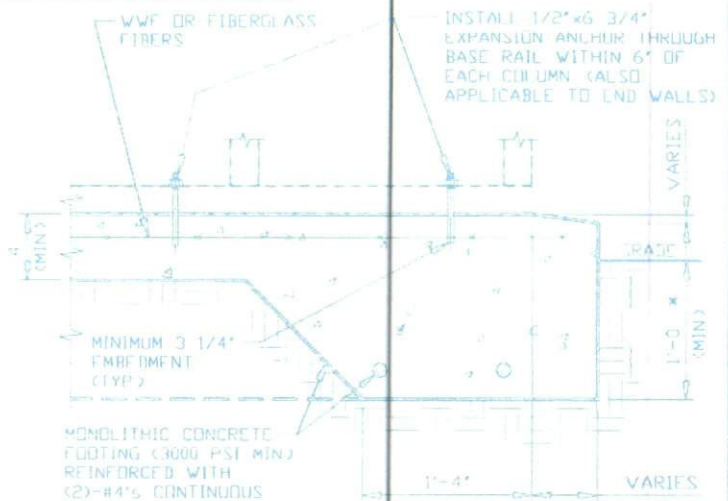
BASE RAIL ANCHORAGE OPTIONS



2

CONCRETE MONOLITHIC SLAB BASE RAIL ANCHORAGE

SCALE: NTS
 MINIMUM ANCHOR EDGE DISTANCE IS 4"
 * COORDINATE WITH LOCAL CODES/ORD
 REGARDING MINIMUM FROST DEPTH REQ



2A

CONCRETE SLAB BASE RAIL ANCHORAGE

SCALE: NTS
 MINIMUM ANCHOR EDGE DISTANCE IS 4"
 * COORDINATE WITH LOCAL CODES/ORD
 REGARDING MINIMUM FROST DEPTH REQ

GENERAL NOTES

NOTE: CONCRETE MONOLITHIC SLAB DESIGN BASED ON MINIMUM SOIL BEARING CAPACITY OF 1,500 PSF

CONCRETE:

CONCRETE SHALL HAVE A MINIMUM SPECIFIED COMPRESSIVE STRENGTH OF 3,000 PSI AT 28 DAYS

COVER OVER REINFORCING STEEL:

FOR FOUNDATIONS, MINIMUM CONCRETE COVER OVER REINFORCING BARS SHALL BE PER ACI-318;
 3" IN FOUNDATIONS WHERE THE CONCRETE IS CAST AGAINST AND PERMANENTLY IN CONTACT WITH THE EARTH OR EXPOSED TO THE EARTH OR WEATHER, AND 1 1/2" ELSEWHERE

REINFORCING STEEL:

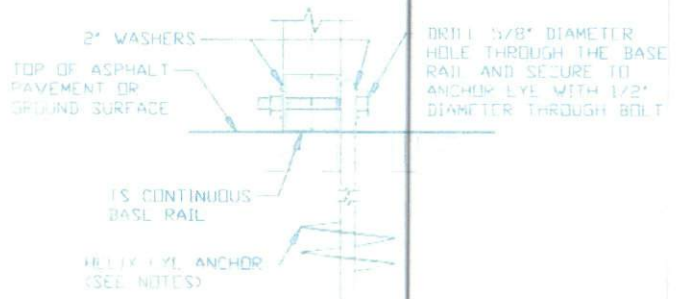
THE TURNDOWN REINFORCING STEEL SHALL BE ASTM A615 GRADE SO THE SLAB REINFORCEMENT SHALL BE WELDED WIRE FABRIC MEETING ASTM A185 OR FIBERGLASS FIBER REINFORCEMENT

REINFORCEMENT MAY BE BENT IN THE SHOP OR THE FIELD PROVIDED:

- 1 REINFORCEMENT IS BENT CORB
- 2 THE DIAMETER OF THE BEND, MEASURED ON THE INSIDE OF THE BAR, IS NOT LESS THAN SIX-BAR DIAMETERS
- 3 REINFORCEMENT PARTIALLY EMBEDDED IN CONCRETE SHALL NOT BE FIELD BENT

HELIX ANCHOR NOTES:

- 1 FOR VERY DENSE AND/OR CEMENTED SANDS, COARSE GRAVEL AND COBBLES, CALICHE, PRELOADED SILTS AND CLAYS, USE MINIMUM (2) 4" HELICES WITH MINIMUM 30" EMBEDMENT OR SINGLE 6" HELIX WITH MINIMUM 50" EMBEDMENT
- 2 FOR CORAL USE MINIMUM (2) 4" HELICES WITH MINIMUM 30" EMBEDMENT OR SINGLE 6" HELIX WITH MINIMUM 50" EMBEDMENT
- 3 FOR MEDIUM DENSE COARSE SANDS, SANDY GRAVELS, VERY STIFF SILTS, AND CLAYS USE MINIMUM (2) 4" HELICES WITH MINIMUM 30 INCH EMBEDMENT OR SINGLE 6" HELIX WITH MINIMUM 50" EMBEDMENT
- 4 FOR LOOSE TO MEDIUM DENSE SANDS, FIRM TO STIFF CLAYS AND SILTS ALLUVIAL FILL, USE MINIMUM (2) 6" HELICES WITH MINIMUM 50" EMBEDMENT
- 5 FOR VERY LOSE TO MEDIUM DENSE SANDS, FIRM TO STIFFER CLAYS AND SILTS, ALLUVIAL FILL, USE MINIMUM (2) 8" HELICES WITH MINIMUM 60" EMBEDMENT



2B

GROUND BASE HELIX ANCHORAGE

SCALE: NTS
 (CAN BE USED FOR ASPHALT)
 * COORDINATE WITH LOCAL CODES/ORD
 REGARDING MINIMUM FROST DEPTH REQ

**MOORE AND ASSOCIATES
ENGINEERING AND CONSULTING, INC.**

DRAWN BY: LT

CHECKED BY: PDH

PROJECT MGR: WSH

CLIENT: CARPORTSNSHEDS

CARPORTSNSHEDS, LLC

158 GATEHOUSE LN.

DOBSON, NC 27017

30'-0" x 14'-0" ENCLOSED STRUCTURE

DATE: 1-14-21

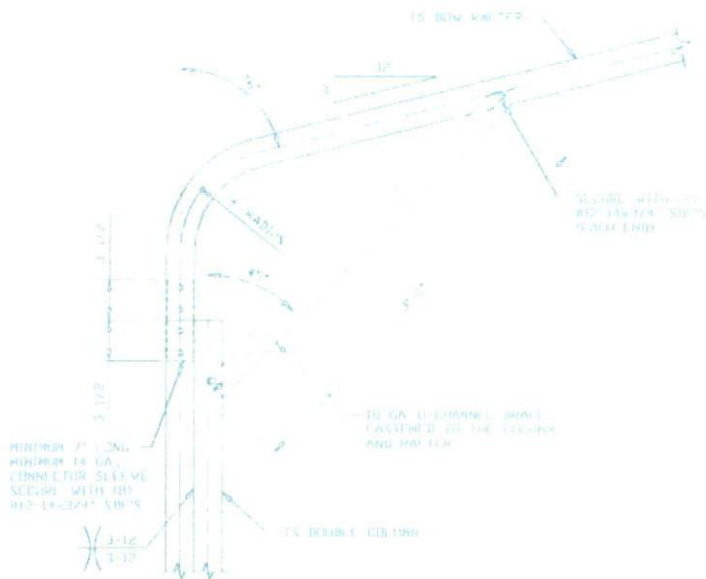
SCALE: NTS

JOB NO: 202205

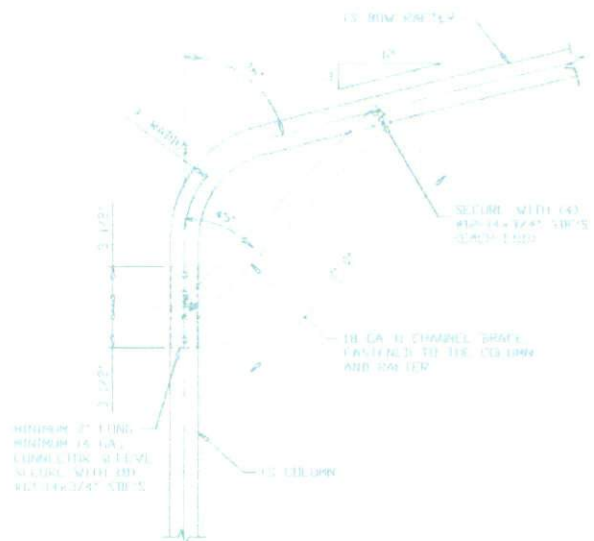
DWG. NO SK-3

REV: 0

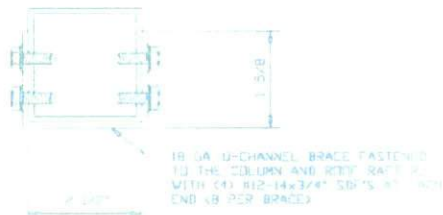
THIS DOCUMENT IS THE PROPERTY OF MOORE AND ASSOCIATES ENGINEERING AND CONSULTING. THE UNAUTHORIZED REPRODUCTION, COPYING, OR OTHERWISE USE OF THIS DOCUMENT IS STRICTLY PROHIBITED AND ANY INFRINGEMENT THEREUPON MAY BE SUBJECT TO LEGAL ACTION.



1 BOW EAVE RAFTER/CORNER POST CONNECTION DETAIL FOR HEIGHTS 11'-0" < TD < 14'-0" SCALE: NTS



1A BOW EAVE RAFTER/CORNER POST CONNECTION DETAIL FOR HEIGHTS < 11'-0" SCALE: NTS



BRACE SECTION SCALE: NTS

MOORE AND ASSOCIATES
ENGINEERING AND CONSULTING, INC.

DRAWN BY: LT

CHECKED BY: PDH

PROJECT: HIGH VIEW

CLIENT: CARPORTS/SHEDS

CARPORTS/SHEDS, LLC

158 GATHOUSE L.N.

DOBSON, NC 27017

30'-0" x 19'-0" ENCLOSED STRUCTURE

DATE: 1-14-21

SCALE: NTS

JEP: NED: EDC: CCS

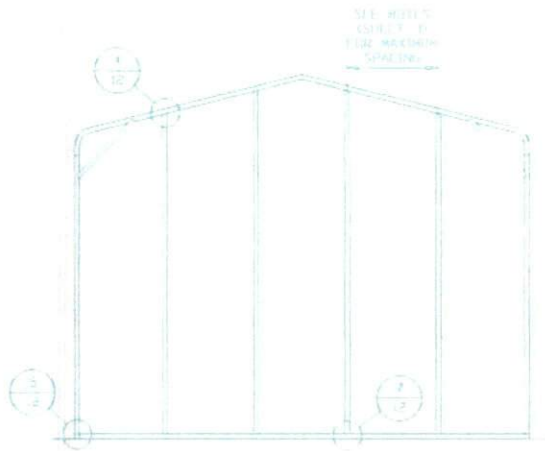
SHT. 0

DWG. NO. SK-3

REV: 0

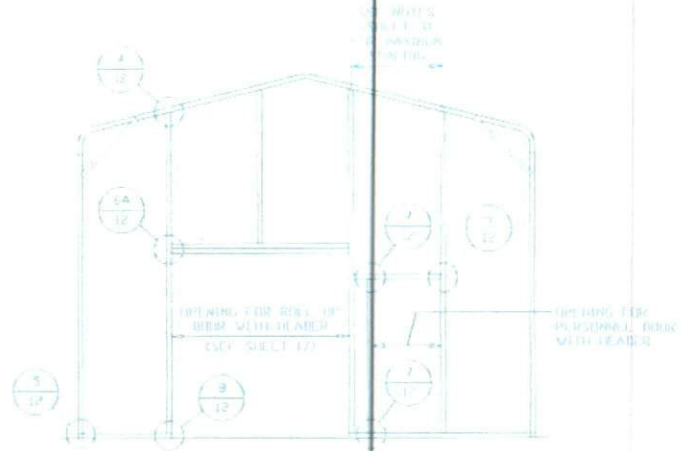
THIS DOCUMENT IS THE PROPERTY OF MOORE AND ASSOCIATES ENGINEERING AND CONSULTING. THE UNAUTHORIZED REPRODUCTION, COPYING, OR OTHERWISE USE OF THIS DOCUMENT IS STRICTLY PROHIBITED AND ANY INFRINGEMENT THEREOF MAY BE SUBJECT TO LEGAL ACTION.

BOW EAVE RAFTER END WALL AND SIDE WALL FRAMING SECTIONS



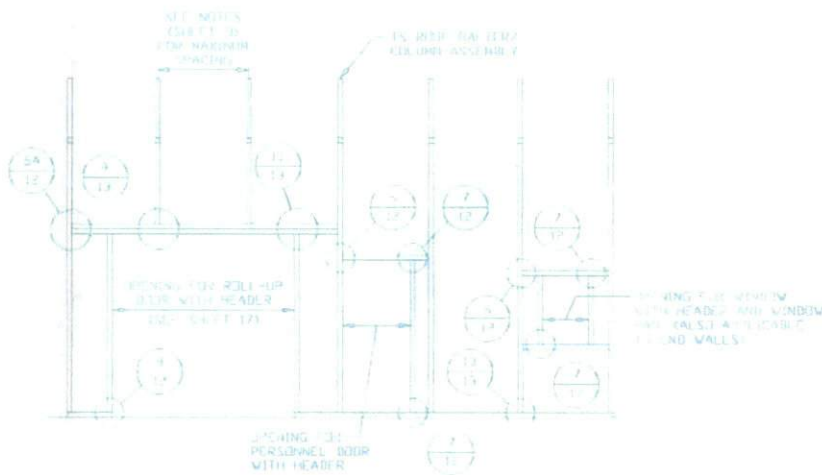
**TYPICAL BOW EAVE RAFTER
END WALL FRAMING SECTION**

SCALE: NTS



**TYPICAL BOW EAVE RAFTER END
WALL OPENINGS FRAMING SECTION**

SCALE: NTS



**TYPICAL BOW EAVE RAFTER
SIDE WALL OPENINGS FRAMING SECTION**

SCALE: NTS

**MOORE AND ASSOCIATES
ENGINEERING AND CONSULTING, INC.**

DRAWN BY: LT

CHECKED BY: PBN

PROJECT: HGR VSH

CLIENT: CAMPBELL/SHIELDS

DATE: 1-14-24

SCALE: NTS

SHT. 11

CAMPBELL/SHIELDS, LLC
100 GATEHOUSE LN.
DORSON, NC 27017
20' 0" x 100' ENCLOSED STRUCTURE

SCALE: NTS

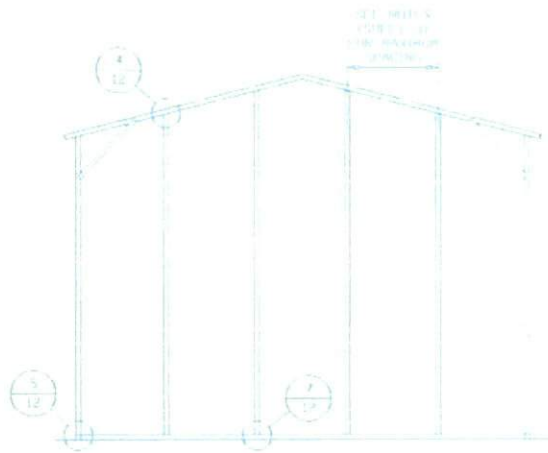
DWG. NO. SK-3

JOB NO. 202205

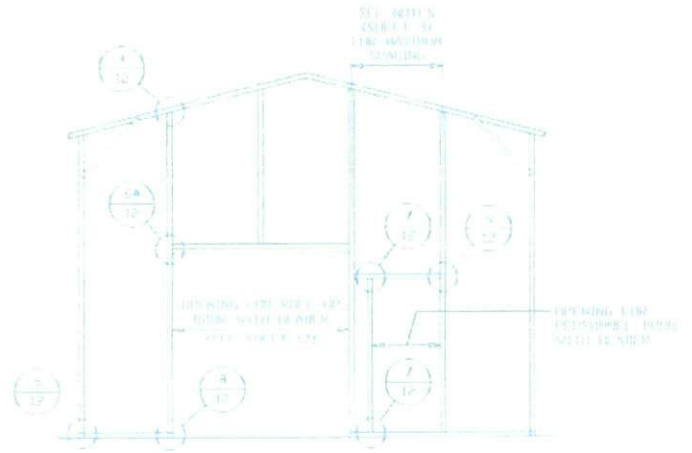
REV. 0

THIS DOCUMENT IS THE PROPERTY OF MOORE AND ASSOCIATES ENGINEERING AND CONSULTING, INC. IT IS TO BE USED ONLY FOR THE PROJECT AND SITE SPECIFICALLY IDENTIFIED HEREIN. IT IS NOT TO BE REPRODUCED, COPIED, OR TRANSMITTED IN ANY FORM OR BY ANY MEANS, ELECTRONIC OR MECHANICAL, INCLUDING PHOTOCOPYING, RECORDING, OR BY ANY INFORMATION STORAGE AND RETRIEVAL SYSTEM, WITHOUT THE WRITTEN PERMISSION OF MOORE AND ASSOCIATES ENGINEERING AND CONSULTING, INC. ANY UNAUTHORIZED REPRODUCTION OR USE OF THIS DOCUMENT IS PROHIBITED AND WILL BE SUBJECT TO LEGAL ACTION.

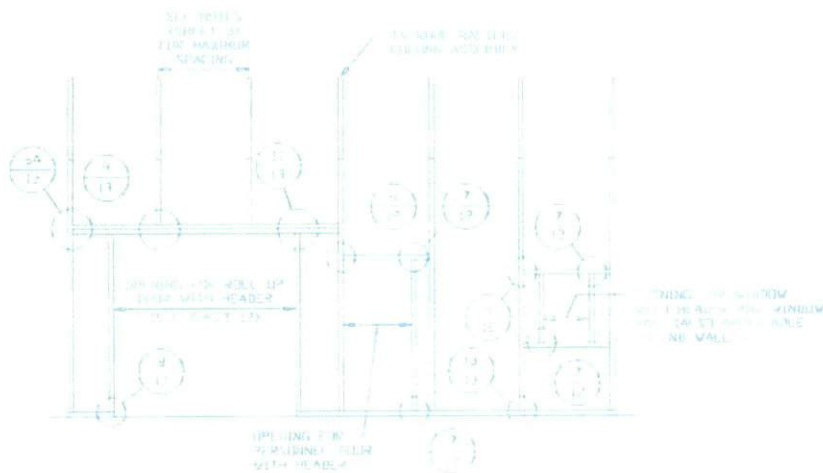
BOX EAVE RAFTER END WALL AND SIDE WALL FRAMING SECTIONS



**TYPICAL BOX EAVE RAFTER
END WALL FRAMING SECTION**
SCALE: NTS



**TYPICAL BOX EAVE RAFTER END
WALL OPENINGS FRAMING SECTION**
SCALE: NTS



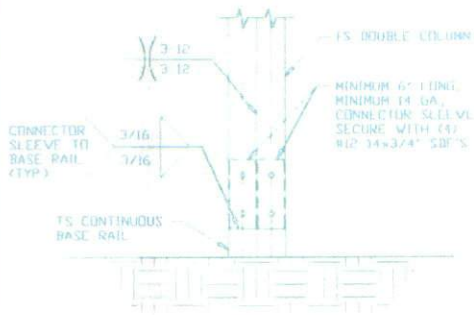
**TYPICAL BOX EAVE RAFTER
SIDE WALL OPENINGS FRAMING SECTION**
SCALE: NTS

**MOORE AND ASSOCIATES
ENGINEERING AND CONSULTING, INC.**

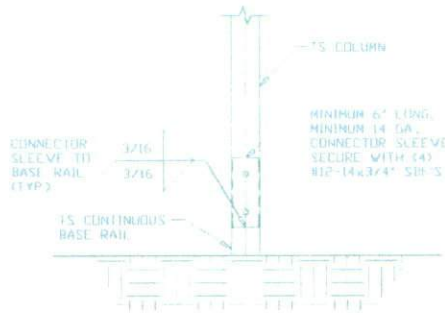
THIS DOCUMENT IS THE PROPERTY OF MOORE AND ASSOCIATES ENGINEERING AND CONSULTING, INC. UNAUTHORIZED REPRODUCTION, COPYING, OR OTHERWISE USE OF THIS DOCUMENT IS STRICTLY PROHIBITED AND ANY IMPROVEMENT THEREUPON MAY BE SUBJECT TO LEGAL ACTION.

DRAWN BY: E.T.		CARPENTERS/SHEDS, LLC	
DESIGNED BY: P.M.H.		158 GATEHOUSE LN. DOBSON, NC 27017	
PROJECT: RED MOON		10' 0" x 12' 0" ENCLOSED STRUCTURE	
DATE: 1-11-24	SCALE: NTS	JOB NO: 002025	
CLIENT: CARPENTERS/SHEDS	SHEET: 10	DWG. NO: SK-3	REV: 0

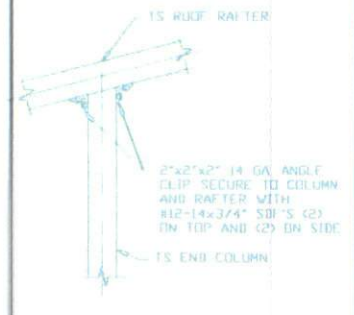
CONNECTION DETAILS



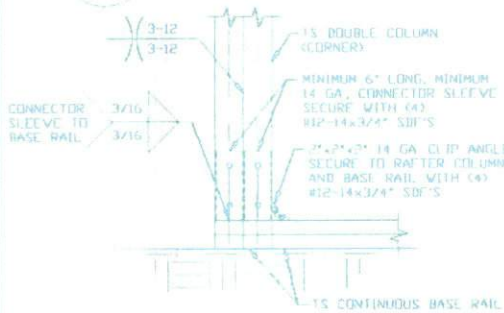
3 POST/BASE RAIL CONNECTION DETAIL
SCALE: NTS



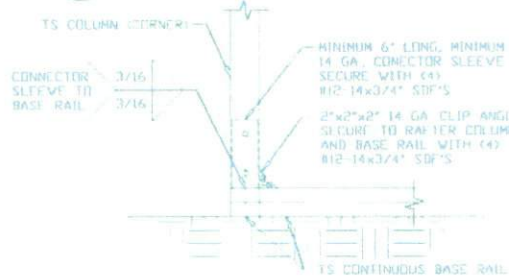
3A POST/BASE RAIL CONNECTION DETAIL
SCALE: NTS



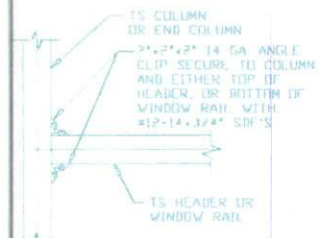
4 END COLUMN/RAFTER CONNECTION DETAIL
SCALE: NTS



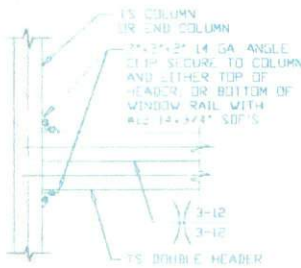
5 END COLUMN/BASE RAIL CONNECTION DETAIL
SCALE: NTS



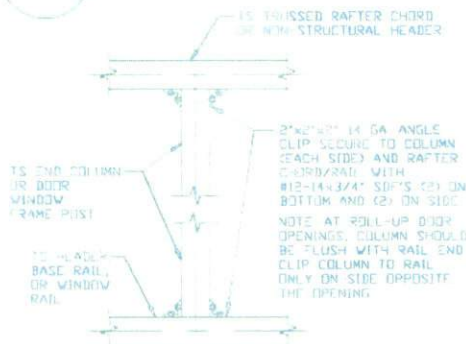
5A END COLUMN/BASE RAIL CONNECTION DETAIL
SCALE: NTS



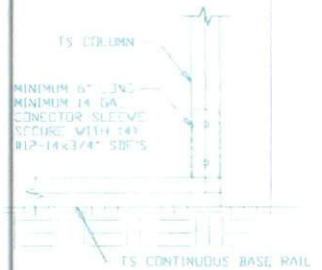
6 COLUMN OR WINDOW RAIL TO POST CONNECTION DETAIL
SCALE: NTS



6A COLUMN/DOUBLE HEADER CONNECTION DETAIL
SCALE: NTS



7 COLUMN TO HEADER, BASE RAIL, OR WINDOW RAIL CONNECTION DETAIL
SCALE: NTS



8 COLUMN/BASE RAIL CONNECTION DETAIL
SCALE: NTS

**MOORE AND ASSOCIATES
ENGINEERING AND CONSULTING, INC.**

DRAWN BY: LT

CHECKED BY: PDH

PROJECT NO: VSM

CLIENT: CARPORTSHEDS

DATE: 1-14-21

SHT. 12

CARPORSHEDS, LLC
158 GATEHOUSE LN.
DOBSON, NC 27017

30'-0" x 14'-0" ENCLOSED STRUCTURE

SCALE: NTS

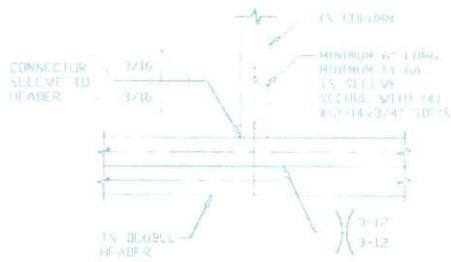
FIG. NO: SK-3

JOB NO: 202005

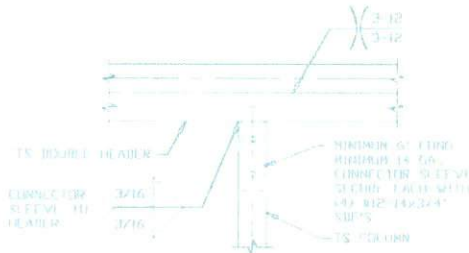
REV: 0

THIS DOCUMENT IS THE PROPERTY OF MOORE AND ASSOCIATES ENGINEERING AND CONSULTING, INC. IT IS TO BE USED ONLY FOR THE PROJECT AND SITE SPECIFICALLY IDENTIFIED HEREIN. ANY REPRODUCTION OR TRANSMISSION OF THIS DOCUMENT IS STRICTLY PROHIBITED AND ANY VIOLATION THEREOF MAY BE SUBJECT TO LEGAL ACTION.

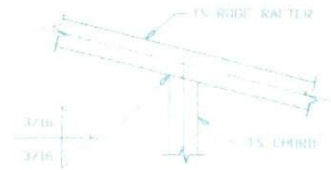
CONNECTION DETAILS



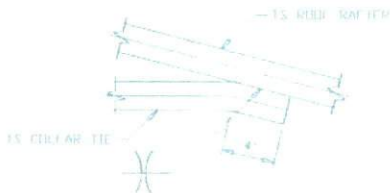
9 COLUMN/DOUBLE HEADER CONNECTION DETAIL
SCALE: NTS



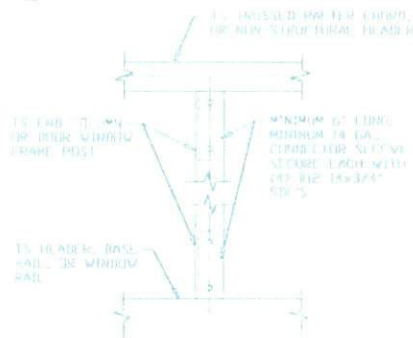
10 DOUBLE HEADER/COLUMN CONNECTION DETAIL
SCALE: NTS



11 RAFTER TO CHORD CONNECTION DETAIL
SCALE: NTS



12 COLLAR TIE CONNECTION DETAIL
SCALE: NTS



13 COLUMN TO HEADER OR BASE RAIL CONNECTION DETAIL
SCALE: NTS

**MOORE AND ASSOCIATES
ENGINEERING AND CONSULTING, INC.**

DRAWN BY: LT

CHECKED BY: PDH

PROJECT MGR: VSN

CLIENT: CARPORTSHEDS

CARPORTSHEDS, LLC
158 GATEHOUSE LN.
DOBSON, NC 27017

30'-0" x 14'-0" ENCLOSED STRUCTURE

DATE: 1-14-21

SWT: 13

SCALE: NTS

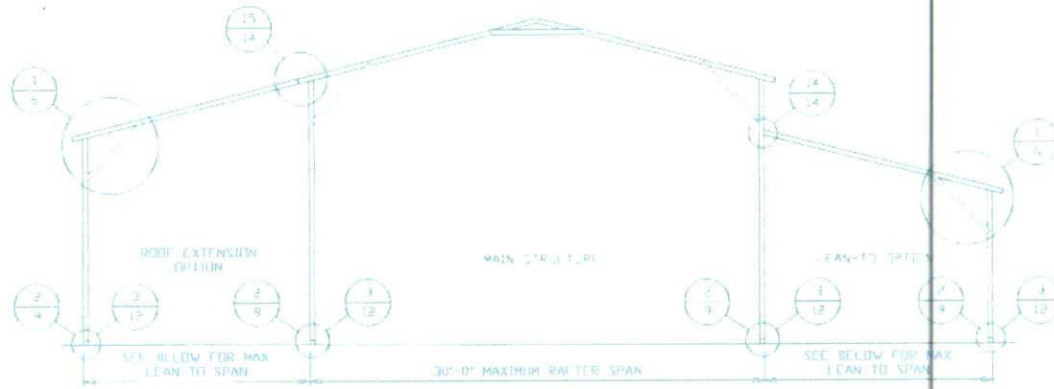
JOB NO: SK-3

JOB NO: 203205

REV: 0

THIS DOCUMENT IS THE PROPERTY OF MOORE AND ASSOCIATES ENGINEERING AND CONSULTING, THE INFORMATION REPRESENTED, EXCEPT AS OTHERWISE INDICATED, IS THE PROPERTY OF MOORE AND ASSOCIATES ENGINEERING AND CONSULTING, THEREFORE IT IS NOT TO BE REPRODUCED OR TRANSMITTED IN ANY FORM OR BY ANY MEANS, ELECTRONIC OR MECHANICAL, WITHOUT THE WRITTEN PERMISSION OF MOORE AND ASSOCIATES ENGINEERING AND CONSULTING, INC.

BOX EAVE RAFTER LEAN-TO OPTIONS

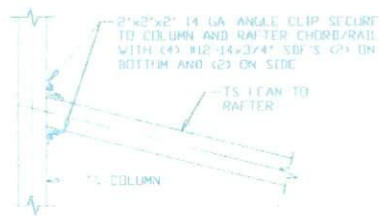


TYPICAL BOX EAVE RAFTER LEAN-TO OPTIONS FRAMING SECTION (BOTH OPTIONS SHOWN)

SCALE: NTS

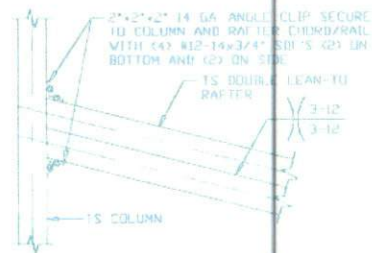
MAIN BUILDING COLUMNS WITH LEAN-TO OR ROOF EXTENSION ATTACHED ARE REQUIRED TO BE DOUBLE COLUMNS FOR EAVE HEIGHTS 11'-0" < TO ≤ 14'-0".

MAIN BUILDING COLUMNS WITH LEAN-TO OR ROOF EXTENSION ATTACHED ARE REQUIRED TO BE SINGLE COLUMNS FOR EAVE HEIGHTS ≤ 11'-0".



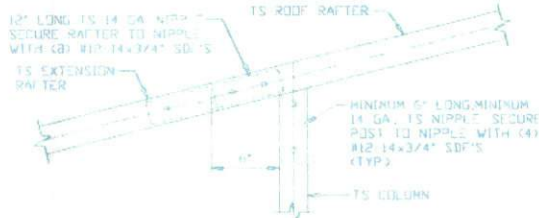
14 LEAN-TO RAFTER TO RAFTER COLUMN CONNECTION DETAIL FOR RAFTER SPANS ≤ 12'-0"

SCALE: NTS



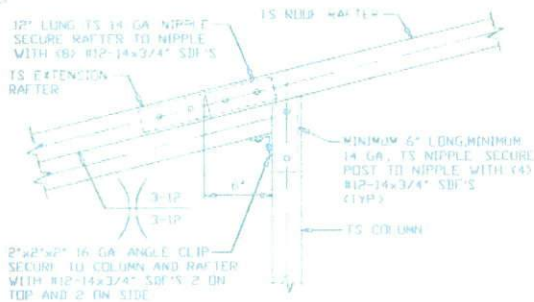
14A LEAN-TO RAFTER TO RAFTER COLUMN CONNECTION DETAIL FOR SPAN 12'-0" < L ≤ 15'-0"

SCALE: NTS



15 SIDE EXTENSION RAFTER COLUMN DETAIL FOR SPANS ≤ 12'-0"

SCALE: NTS



15A SIDE EXTENSION RAFTER/COLUMN DETAIL FOR SPAN 12'-0" < L ≤ 15'-0"

SCALE: NTS

**MOORE AND ASSOCIATES
ENGINEERING AND CONSULTING, INC.**

DRAWN BY: LT

CHECKED BY: PDH

PROJECT MGR: VSM

CLIENT: CARPORTSNSHEDS

CARPORTSNSHEDS, LLC
158 GATEHOUSE LN.
DOBSON, NC 27017

30'-0"x14'-0" ENCLOSED STRUCTURE

DATE: 1-14-21

SCALE: NTS

JOB NO: 203205

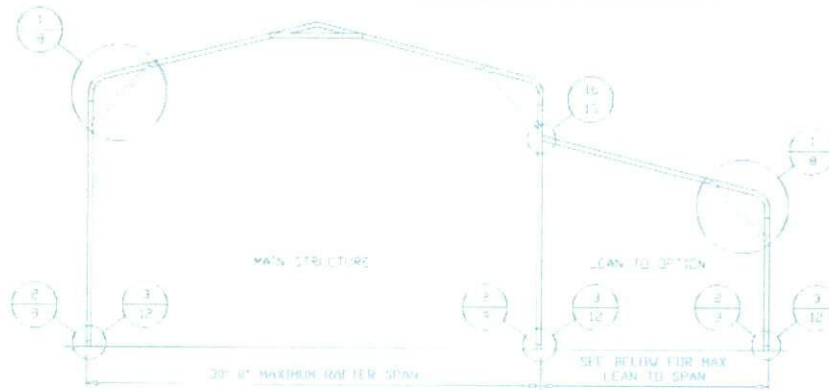
SHT. 14

DRG. NO: SK-3

REV: 0

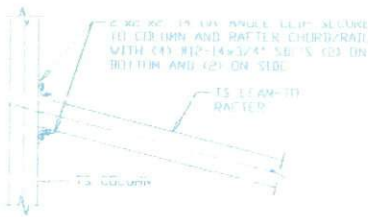
THIS DOCUMENT IS THE PROPERTY OF MOORE AND ASSOCIATES ENGINEERING AND CONSULTING, INC. UNLESS YOU HAVE PURCHASED THIS DOCUMENT FROM MOORE AND ASSOCIATES ENGINEERING AND CONSULTING, INC. ANY REPRODUCTION OR TRANSMISSION OF THIS DOCUMENT OR ANY INFORMATION THEREON MAY BE SUBJECT TO LEGAL ACTION.

BOW EAVE RAFTER LEAN-TO OPTIONS



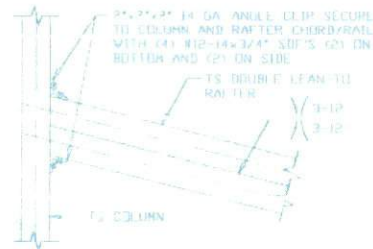
TYPICAL BOW EAVE RAFTER LEAN-TO OPTIONS FRAMING SECTION

SCALE: NTS
 MAIN BUILDING COLUMNS WITH LEAN-TO OR ROOF EXTENSION ATTACHED ARE REQUIRED TO BE DOUBLE COLUMNS FOR EAVE HEIGHTS 11'-0" < E1 < 14'-0"
 MAIN BUILDING COLUMNS WITH LEAN-TO OR ROOF EXTENSION ATTACHED ARE REQUIRED TO BE SINGLE COLUMNS FOR EAVE HEIGHTS < 11'-0"



**LEAN-TO RAFTER TO RAFTER
 COLUMN CONNECTION DETAIL
 FOR RAFTER SPANS ≤ 12'-0"**

16



**LEAN-TO RAFTER TO RAFTER
 COLUMN CONNECTION DETAIL
 FOR SPAN 12'-0" < L ≤ 15'-0"**

16A

SCALE: NTS

**MOORE AND ASSOCIATES
 ENGINEERING AND CONSULTING, INC.**

DRAWN BY: LT

CHECKED BY: PDH

PROJECT MGR: VSM

CLIENT: CARPORTS/SHEDS

CARPORTS/SHEDS, LLC
 158 GATEHOUSE LN.
 DOBSON, NC 27017

30'-0" x 14'-0" ENCLOSED STRUCTURE

DATE: 1-14-20

SCALE: NTS

JOB NO: 202008

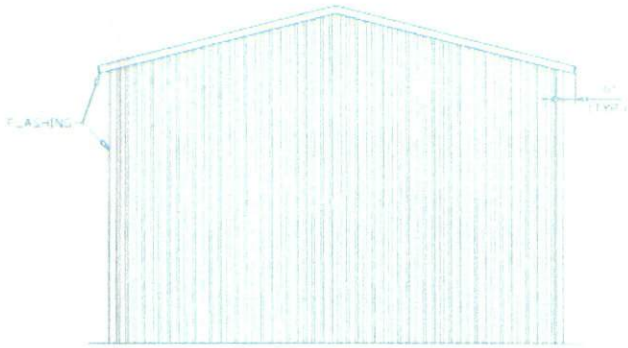
SHT. 15

DWG. NO: SK-3

REV: 0

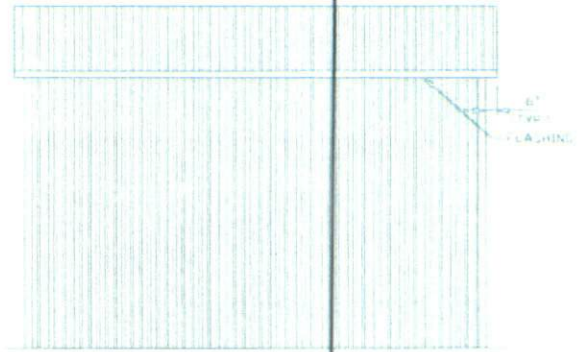
THIS DOCUMENT IS THE PROPERTY OF MOORE AND ASSOCIATES ENGINEERING AND CONSULTING, INC. UNAUTHORIZED REPRODUCTION, COPYING, OR OTHERWISE USE OF THIS DOCUMENT IS STRICTLY PROHIBITED AND ANY INFRINGEMENT THEREUPON MAY BE SUBJECT TO LEGAL ACTION.

BOX EAVE RAFTER VERTICAL ROOF/SIDING OPTION



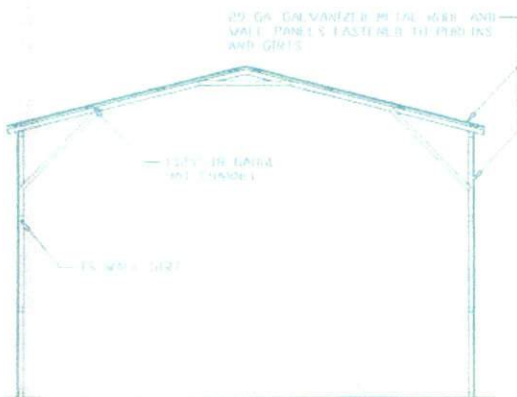
**TYPICAL END ELEVATION
VERTICAL ROOF/SIDING**

SCALE: NTS



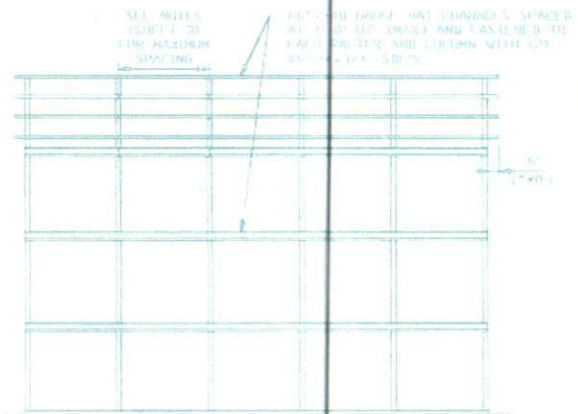
**TYPICAL SIDE ELEVATION
VERTICAL ROOF/SIDING**

SCALE: NTS



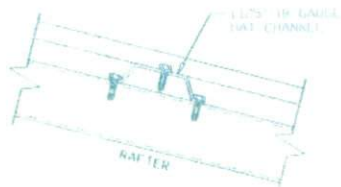
**TYPICAL SECTION VERTICAL
ROOF/SIDING OPTION**

SCALE: NTS



**TYPICAL FRAMING SECTION
VERTICAL ROOF/SIDING OPTION**

SCALE: NTS



PANEL ATTACHMENT

ALTERNATE FOR VERTICAL SIDING PANELS
SCALE: NTS

**MOORE AND ASSOCIATES
ENGINEERING AND CONSULTING, INC.**

DRAWN BY: LT

CHECKED BY: PDM

PROJECT NO: VSH

CLIENT: CARPORTSHEEDS

CARPORTSHEEDS, LLC

58 GATEHOUSE LN.

DOBSON, NC 27017

30' 0" x 30' 0" ENCLOSED STRUCTURE

DATE: 3-24-21

SCALE: NTS

JOB NO: 203205

SHT. 16

PAGE NO: SK-3

REV: 0

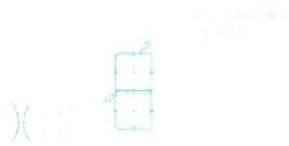
THIS DOCUMENT IS THE PROPERTY OF MOORE AND ASSOCIATES ENGINEERING AND CONSULTING, INC. UNAUTHORIZED REPRODUCTION, COPYING, OR OTHERWISE USE OF THIS DOCUMENT IS STRICTLY PROHIBITED AND ANY INFRINGEMENT THEREUPON MAY BE SUBJECT TO LEGAL ACTION.

SIDE WALL HEADER OPTIONS



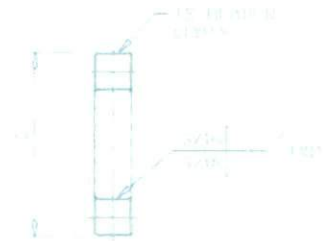
**HEADER DETAIL FOR
SIDE WALL DOOR
OPENINGS < 7'-0"**

SCALE: NTS



**HEADER DETAIL FOR
SIDE WALL DOOR OPENINGS
7'-0" < LENGTH < 11'-0"**

SCALE: NTS



**HEADER DETAIL FOR
SIDE WALL DOOR OPENINGS
11'-0" < LENGTH < 16'-0"**

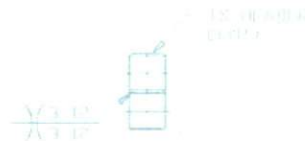
SCALE: NTS

END WALL HEADER OPTIONS



**HEADER DETAIL FOR END WALL
DOOR OPENINGS < 13'-0"**

SCALE: NTS



**HEADER DETAIL FOR
END WALL DOOR OPENINGS
13'-0" < LENGTH < 16'-0"**

SCALE: NTS

**MOORE AND ASSOCIATES
ENGINEERING AND CONSULTING, INC.**

PROJECT NO. 11

DATE: 1-13-01

DRAWN: GREGORY/DAVID

CAMPBELL/STREIBER, CO.

256 GARDEN HILL RD.

ROCKFORD, ILL. 61107

27' 0" x 11' 0" LOCKER BUILDING

DATE: 1-13-01

SCALE: NTS

DATE: 1-13-01

REV: 0

THIS DOCUMENT IS THE PROPERTY OF MOORE AND ASSOCIATES ENGINEERING AND CONSULTING, INC. ANY UNAUTHORIZED REPRODUCTION, STORAGE, OR DISTRIBUTION OF THIS DOCUMENT IS STRICTLY PROHIBITED FOR ANY ADMINISTRATIVE WORKSHOP AND IS SUBJECT TO LEGAL ACTION.