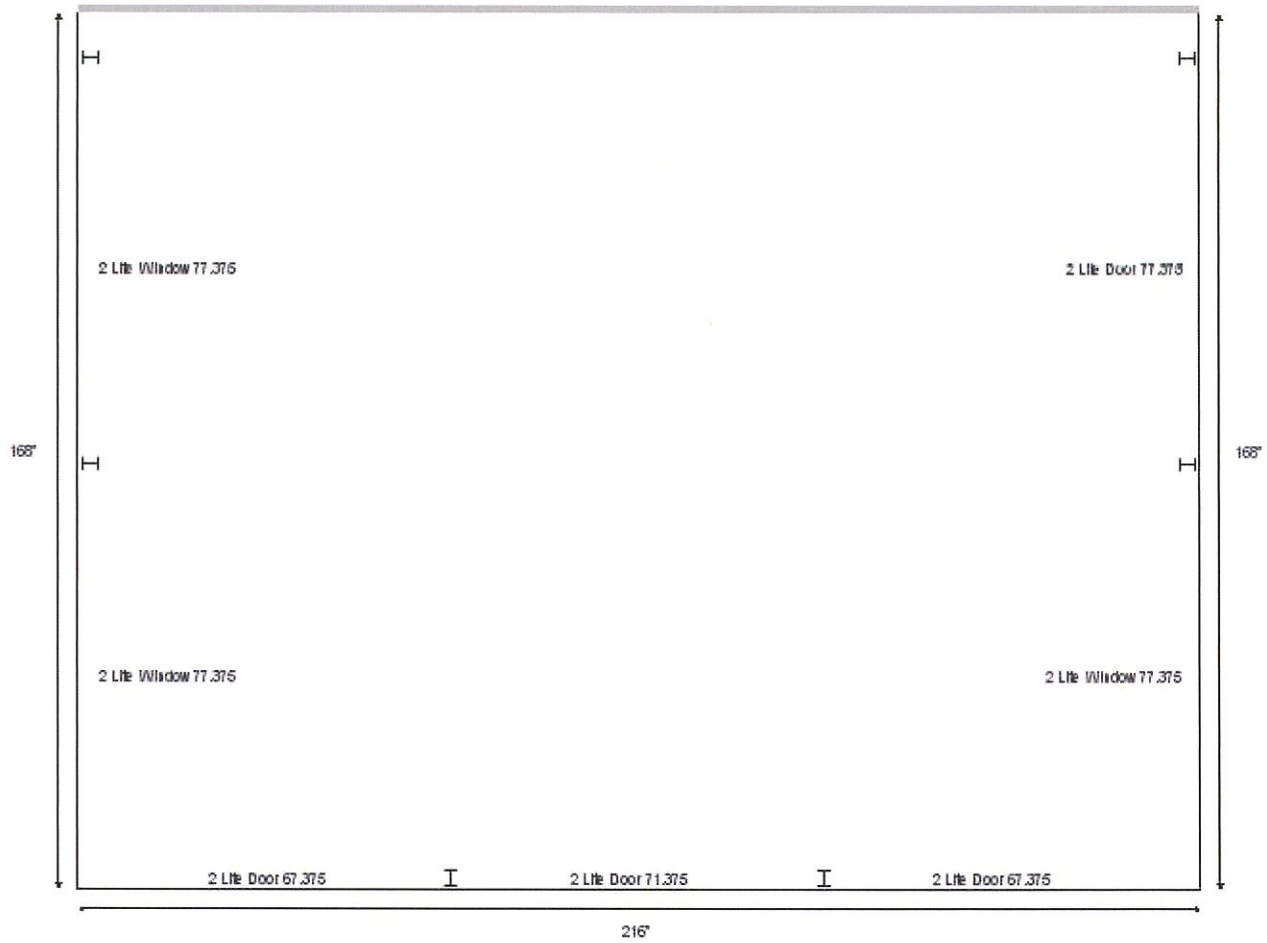


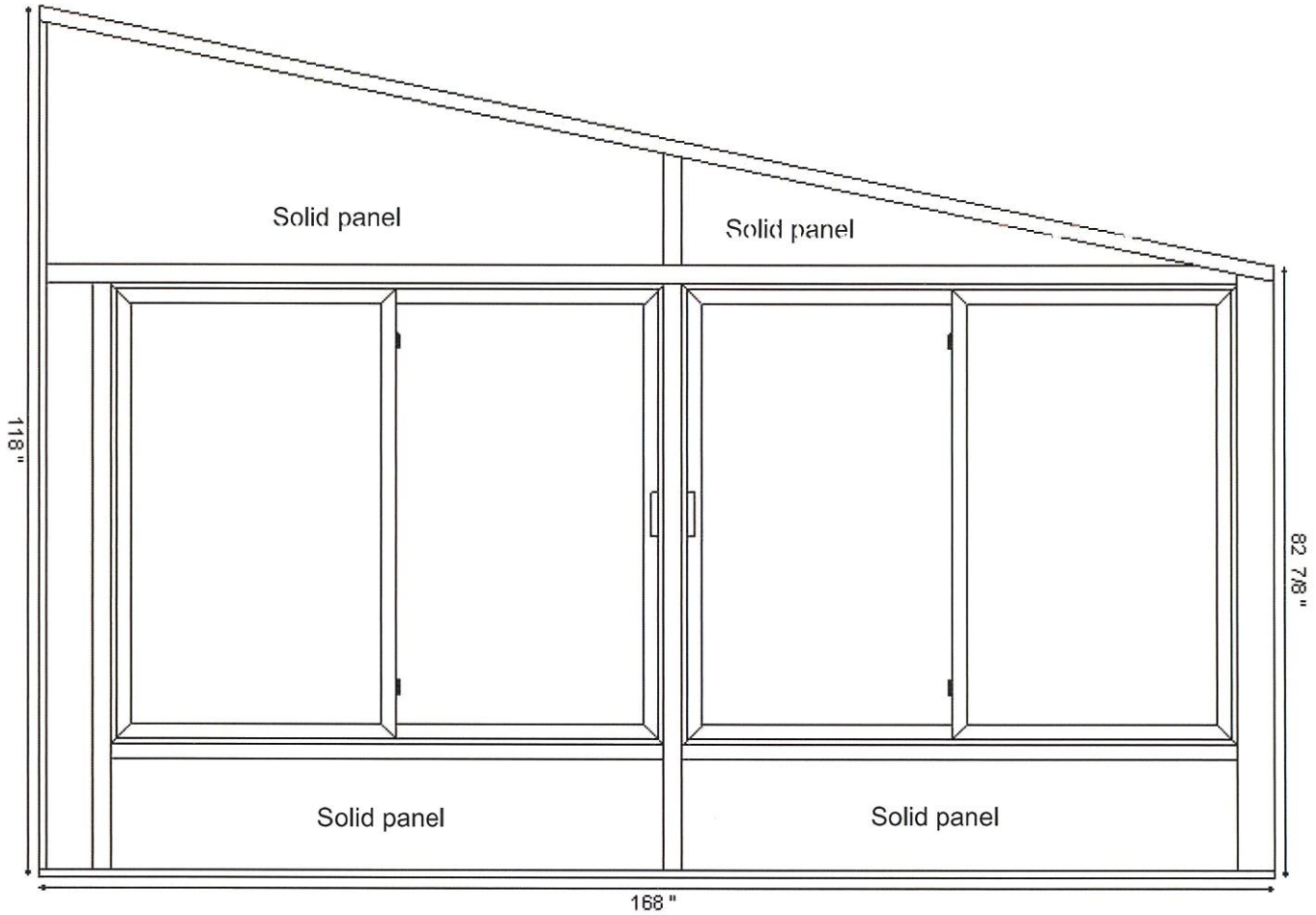
## Floor Plan



### Dimensions

Attachment Height: 118 "  
B Wall Height: 82.875 "  
B Wall Width: 216 "  
A Wall Width: 168 "  
C Wall Width: 168 "  
Roof Overhang: 10 "

### A Wall



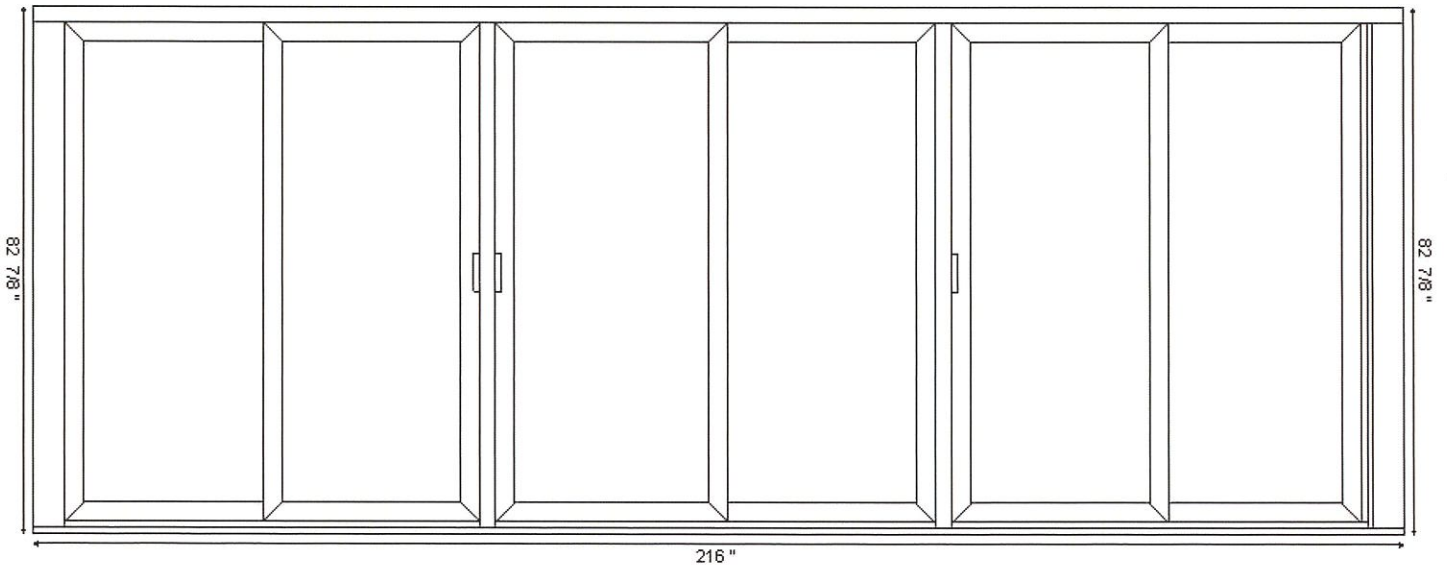
#### Dimensions

Attachment Height: 118 "  
B Wall Height: 82.875 "  
A Wall Width: 168 "  
Roof Overhang: 10 "

#### Layout

0" (Fascia) + 8.25" (Foam) + 0.5" (THERMAL H) + 77.375" (2 Lite Window) + 0.5" (THERMAL H) + 77.375" (2 Lite Window) + 4" (Corner Post)

## B Wall



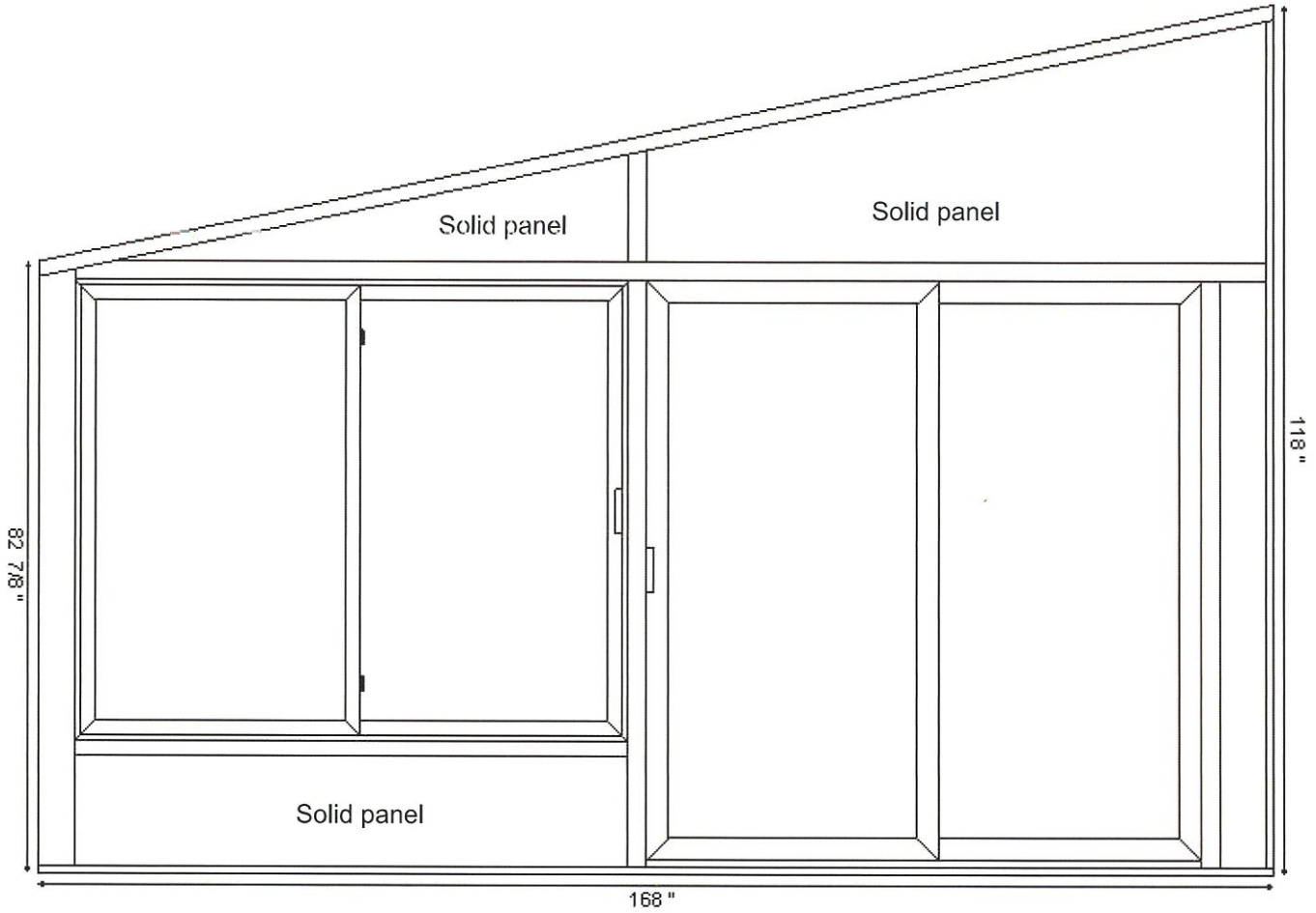
### Dimensions

Attachment Height: 118 "  
B Wall Height: 82.875 "  
B Wall Width: 216 "  
Roof Overhang: 10 "

### Layout

4" (Corner Post) + 67.375" (2 Lite Door) + 0.5" (THERMAL H) + 71.375" (2 Lite Door) + 0.5" (THERMAL H) + 67.375" (2 Lite Door) + 4" (Corner Post) + 0.875" (Remainder - No Fill)

### C Wall



#### Dimensions

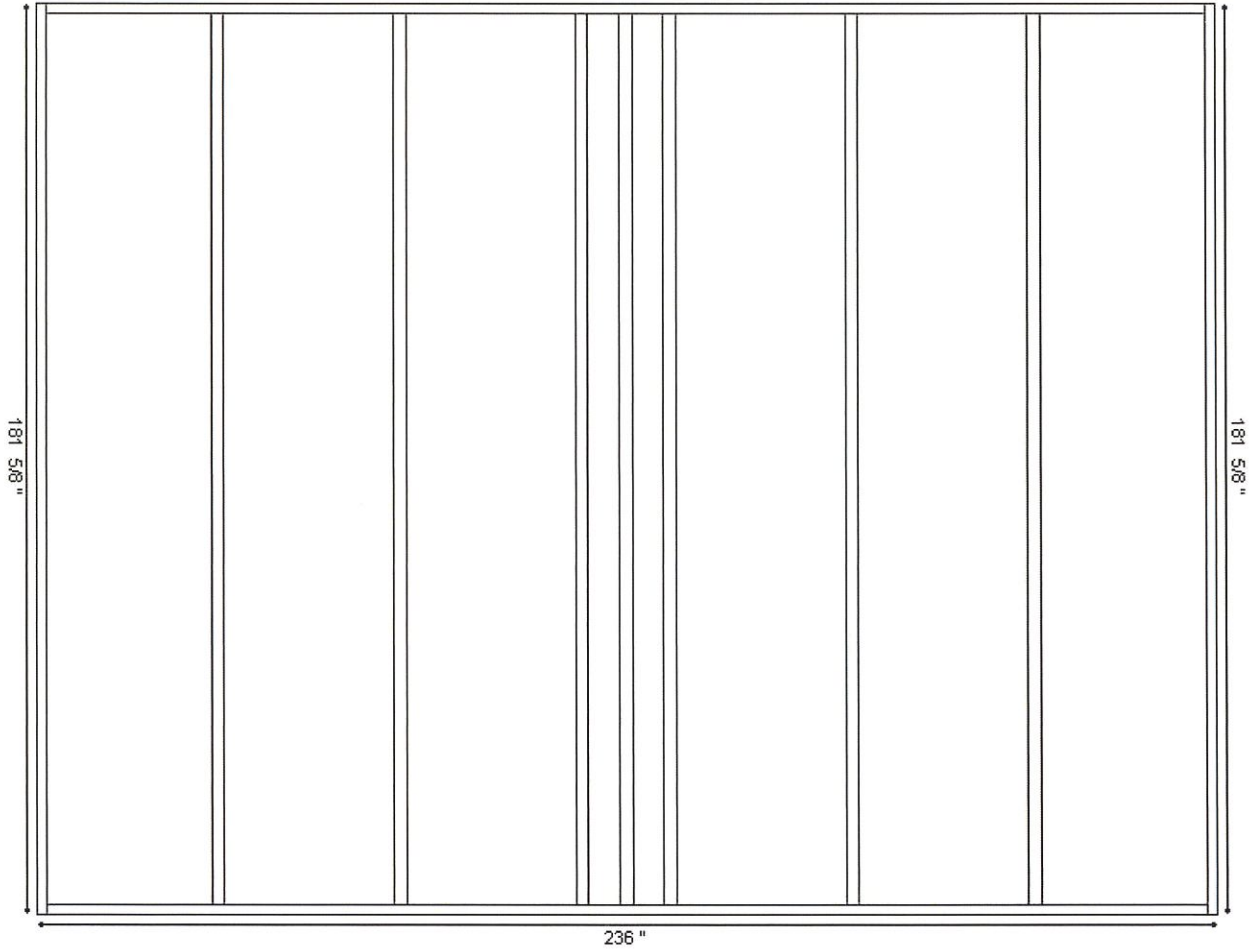
Attachment Height: 118 "  
B Wall Height: 82.875 "  
C Wall Width: 168 "  
Roof Overhang: 10 "

#### Layout

4" (Corner Post) + 77.375" (2 Lite Window) + 0.5" (THERMAL H) + 77.375" (2 Lite Door) + 0.5" (THERMAL H) + 8.25" (Foam) + 0" (Fascia)

ORDER NO: 3698  
ITEM: 1  
DATE: 01/12/22

# Roof



## Dimensions

Attachment Height: 118 "  
B Wall Height: 82.875 "  
B Wall Width: 216 "  
A Wall Width: 168 "  
C Wall Width: 168 "  
Roof Overhang: 10 "