

REFERENCE:  
DEED BOOK 4020, PAGE 593  
MAP#2021-308  
HARNETT COUNTY REGISTRY  
RATIO OF PRECISION= 1/5,000+

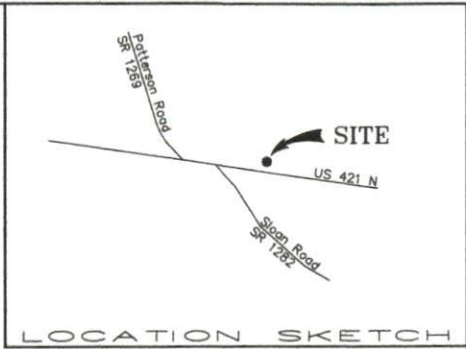
ACREAGE DETERMINED  
BY COORDINATE METHOD.

UNLESS OTHERWISE DENOTED,

- = EXISTING IRON STAKE
- = EXISTING CONCRETE MONUMENT
- = SET CONCRETE MONUMENT
- = SET 1/2" IRON STAKE
- x = CALCULATED POINT
- ▲ = POWER SERVICE STUB
- ⊙ = SEWER SERVICE STUB
- ⊕ = TELEPHONE SERVICE STUB
- ⊗ = CABLE TV SERVICE STUB
- ⊞ = WATER METER
- ⊕ = FIRE HYDRANT
- ⊙ = SANITARY SEWER MANHOLE
- ⊕ = UTILITY POLE



Matthew A. Callahan



NOTICE: This property is located within a Public Water Supply Watershed - Development Restrictions May Apply.  
Cape Fear River (Lillington) Class-WS-IV HQW  
Lots will be served with public water and private septic system.

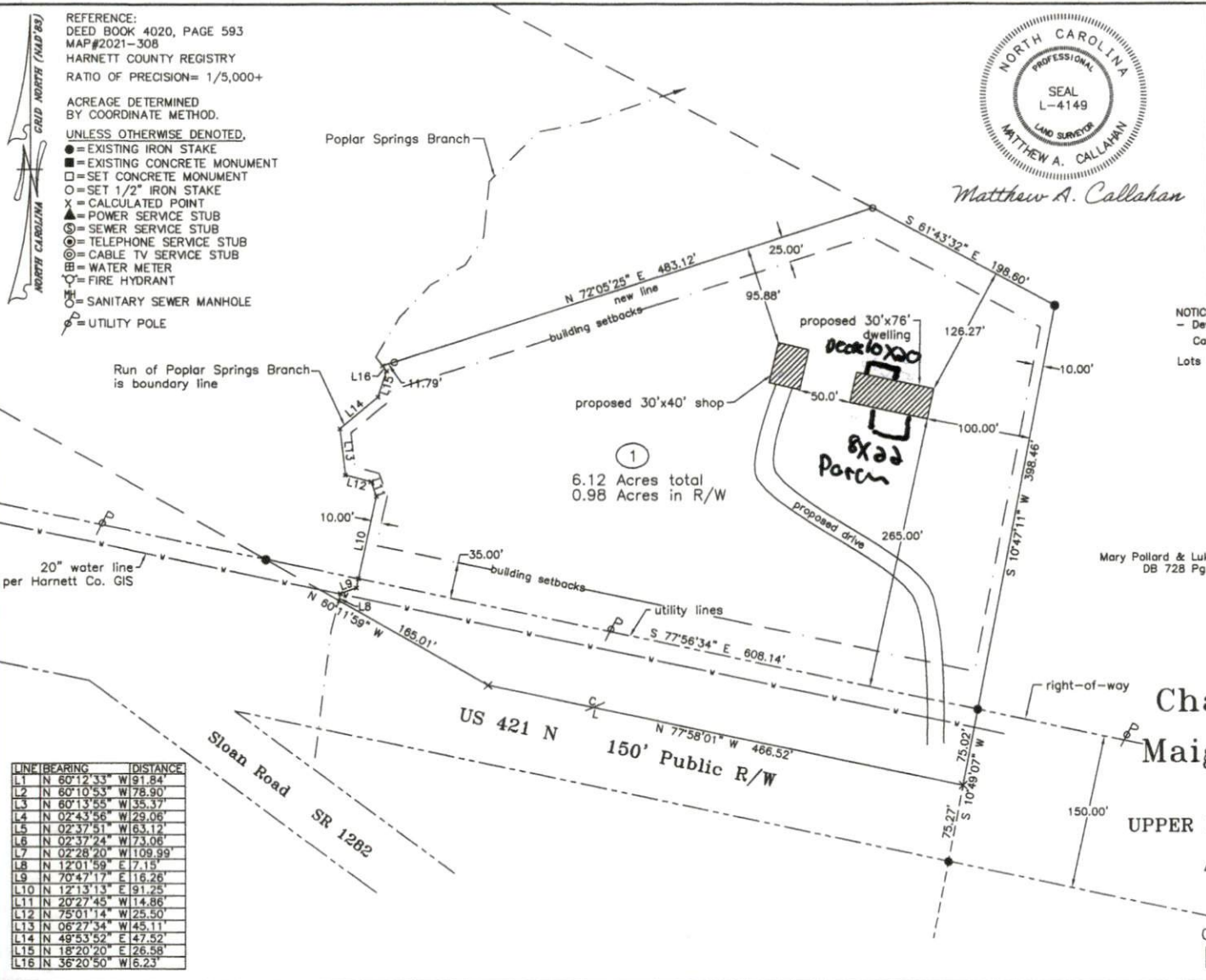
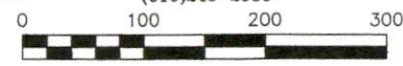
PIN 0601-71-2057  
PID 139691 006701  
Property is Zoned "RA-30"  
SETBACKS:  
FRONT=35' from R/W  
SIDE=10'  
REAR=25'  
CORNER SIDE=20'

Mary Pollard & Luke Patterson  
DB 728 Pg 969

SITE PLAN FOR  
**Charles Ray Fisher III**  
& WIFE  
**Maigon Gabrielle Fisher**  
LOT NO. 1

Patterson Division  
UPPER LITTLE RIVER TWP, HARNETT COUNTY,  
NORTH CAROLINA

AUGUST 6, 2021 -- SCALE 1"=100'  
MATTHEW A. CALLAHAN SURVEYING  
P.O. BOX 938, VASS, N.C.  
(810)245-2980



①  
6.12 Acres total  
0.98 Acres in R/W

LINE	BEARING	DISTANCE
L1	N 60°12'33" W	91.84'
L2	N 60°10'53" W	78.90'
L3	N 60°13'55" W	35.37'
L4	N 02°43'56" W	29.06'
L5	N 02°37'51" W	63.12'
L6	N 02°37'24" W	73.06'
L7	N 02°28'20" W	109.99'
L8	N 12°01'59" E	17.15'
L9	N 70°47'17" E	116.28'
L10	N 12°13'13" E	191.25'
L11	N 20°27'45" W	114.86'
L12	N 75°01'14" W	125.50'
L13	N 06°27'34" W	45.11'
L14	N 49°53'52" E	47.52'
L15	N 18°20'20" E	26.58'
L16	N 36°20'50" W	6.23'