

Joyce Turlington
D.B. 518, Pg. 59

ERB
(6"AG)

S 84°08'13"E 587.67'

5.18 Acres Residual
(4.86 Acres Net)

[810]

Robert A. Ahrens
Leslie B. Ahrens

D.B. 3374, Pg. 655

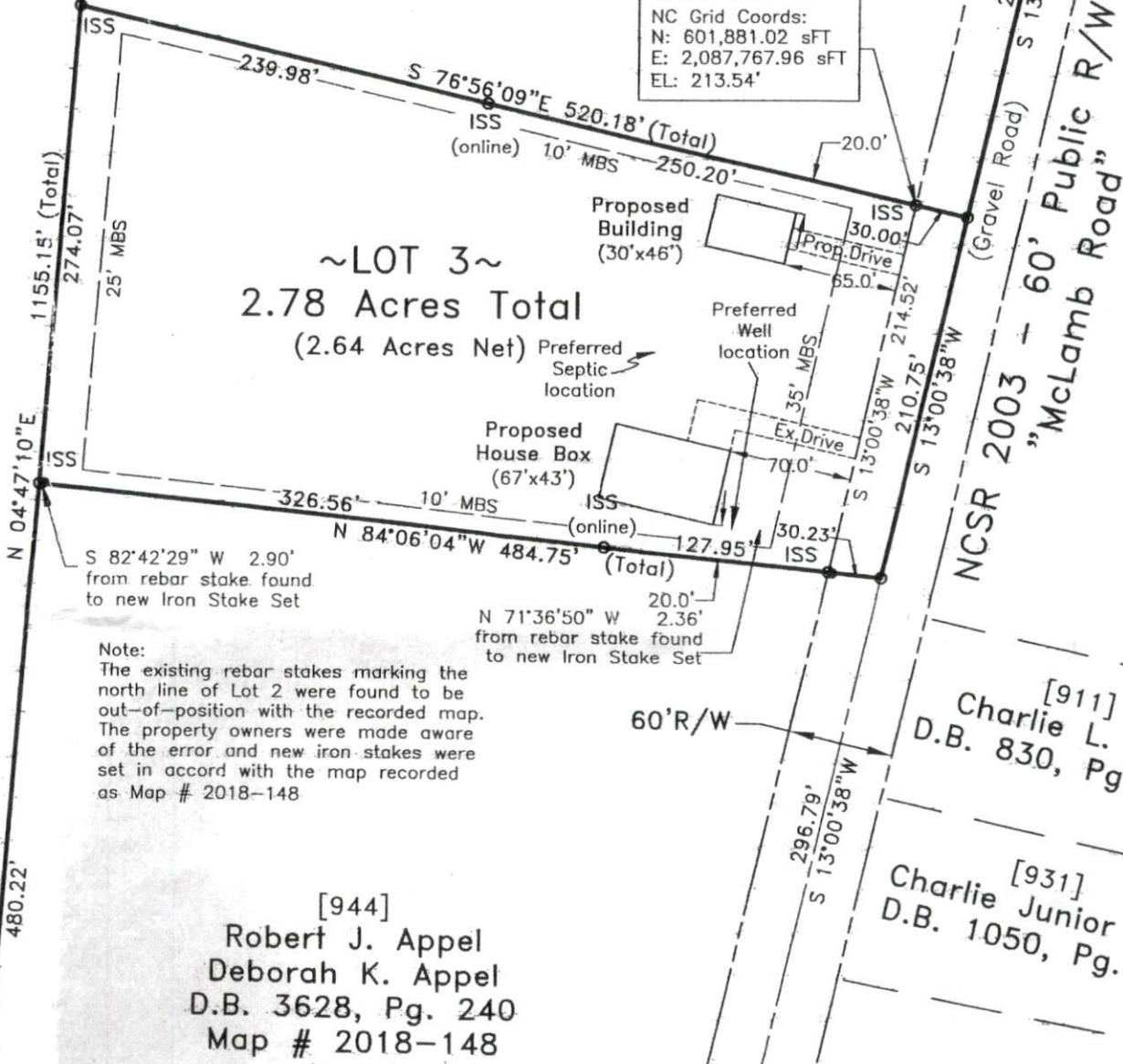
Map # 2018-148 (Lot 1)

Map # 2015-321 (Parcel "A")

ECS
(5"BC)

[1230]
Martha Byrd Stafford, trustee
& Barbara McLamb Byrd Trust
D.B. 3475, Pg. 763
(Tract Two)

NC Grid Coords:
N: 601,881.02 sFT
E: 2,087,767.96 sFT
EL: 213.54'



~LOT 3~
2.78 Acres Total
(2.64 Acres Net)

Note:
The existing rebar stakes marking the north line of Lot 2 were found to be out-of-position with the recorded map. The property owners were made aware of the error and new iron stakes were set in accord with the map recorded as Map # 2018-148.

[944]
Robert J. Appel
Deborah K. Appel
D.B. 3628, Pg. 240
Map # 2018-148

[911]
Charlie L. I
D.B. 830, Pg.

[931]
Charlie Junior
D.B. 1050, Pg.

NCSR 2003 - 60' Public R/W
"McLamb Road"