

Wicker Construction Corp.
919-356-8585

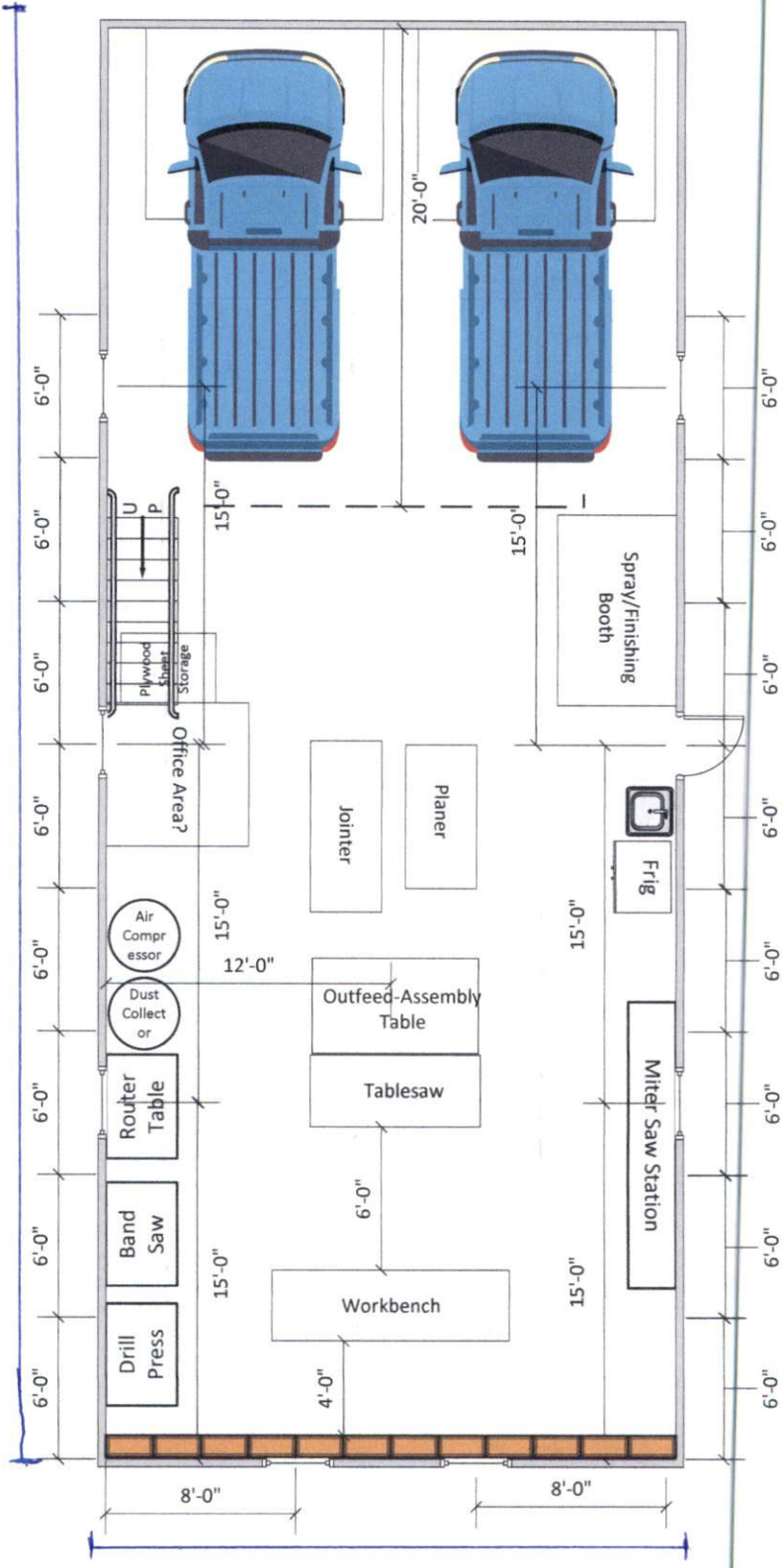
Shop Floor Layout



Notes

1. 3 Windows on north wall
2. 2 Windows on west wall
3. 3 Windows & Door on south wall
4. Two separate 8' Tall x 10' wide garage doors
5. Light switches by door on south wall
6. Utility sink to the left when walking in the door
7. Is it possible to have a stair case for attic access? Or will there not really be any attic to speak of??

Monolithic Slab
Truss roof



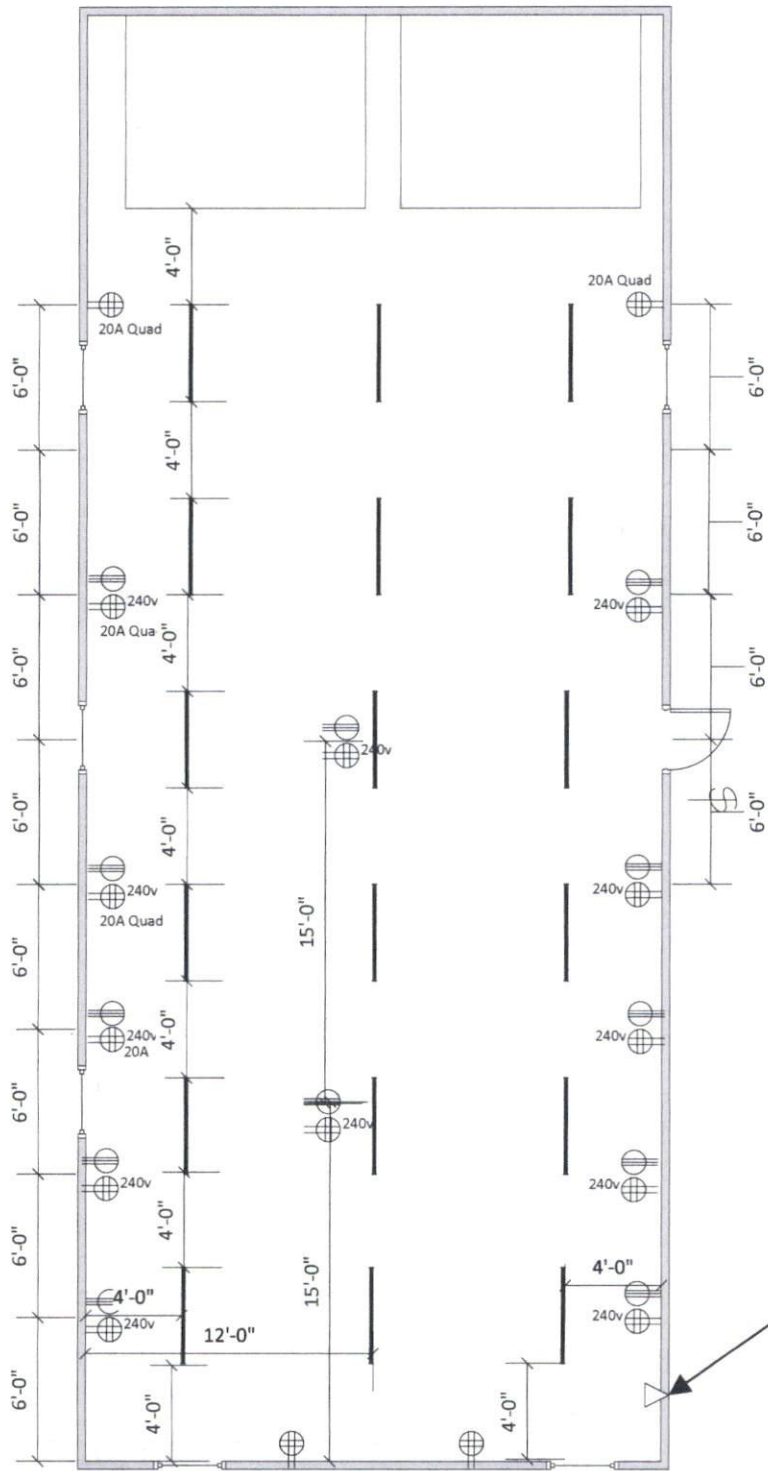
Electrical & Lighting

Lighting Notes

1. LED 96W 5000K 10,000 Lumen Fixtures
2. Spaced 4' from walls on each side with a center row
3. Spaced every 6 feet up each wall
4. There are six rows of three lights each. Wire bottom three rows in one switch and top three rows on second switch

Electrical Notes

1. Receptacles all Quad with two 20A and 2 220V
2. Height should be 44" off floor – standard backsplash height for a base cabinet
3. Spaced every 6 feet up each wall
4. Two in ceiling – centered every 15'



Breaker box
and telecom?

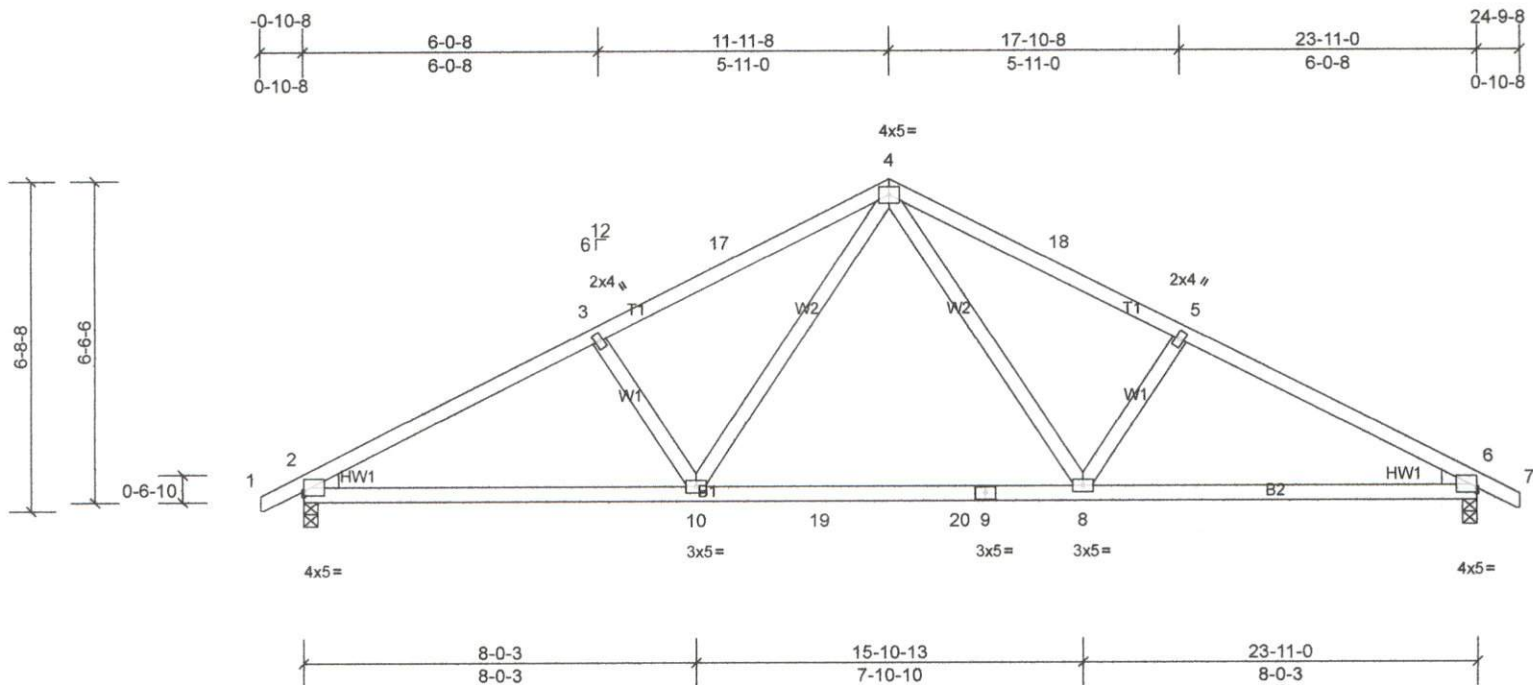
Job	Truss	Truss Type	Qty	Ply	Job Reference (optional)
Wicker shop	A	Common	29	1	

Carter Components - Sanford, Sanford, NC, user

Run: 8.5 S 0 Jan 6 2022 Print: 8.500 S Jan 6 2022 MiTek Industries, Inc. Wed Mar 02 09:50:06

Page: 1

ID:COZlrehi4jemG_wkKID_y7zf08s-v?XMihO99R_xGNQGQjARYR51ezLRvqpwJZSsEqzF01V



Scale = 1:47.1

Plate Offsets (X, Y): [2:Edge,0-1-2], [6:Edge,0-1-2]

Loading	(psf)	Spacing	2-0-0	CSI	DEFL	in	(loc)	l/defl	L/d	PLATES	GRIP	
TCLL (roof)	20.0	Plate Grip DOL	1.15	TC	0.48	Vert(LL)	-0.18	8-10	>999	240	MT20	244/190
Snow (Pf/Pg)	13.9/20.0	Lumber DOL	1.15	BC	0.64	Vert(CT)	-0.29	8-10	>999	180		
TCDL	10.0	Rep Stress Incr	YES	WB	0.13	Horz(CT)	0.05	6	n/a	n/a		
BCLL	0.0*	Code	IRC2015/TPI2014	Matrix-MSH								
BCDL	10.0											
											Weight: 112 lb	FT = 20%

LUMBER

TOP CHORD 2x4 SP No.2
 BOT CHORD 2x4 SP No.2
 WEBS 2x4 SP No.2 *Except* W1:2x4 SP No.3
 WEDGE Left: 2x4 SP No.3
 Right: 2x4 SP No.3

BRACING

TOP CHORD
 BOT CHORD

Structural wood sheathing directly applied or 4-3-10 oc purlins.
 Rigid ceiling directly applied or 10-0-0 oc bracing.

MiTek recommends that Stabilizers and required cross bracing be installed during truss erection, in accordance with Stabilizer Installation guide.

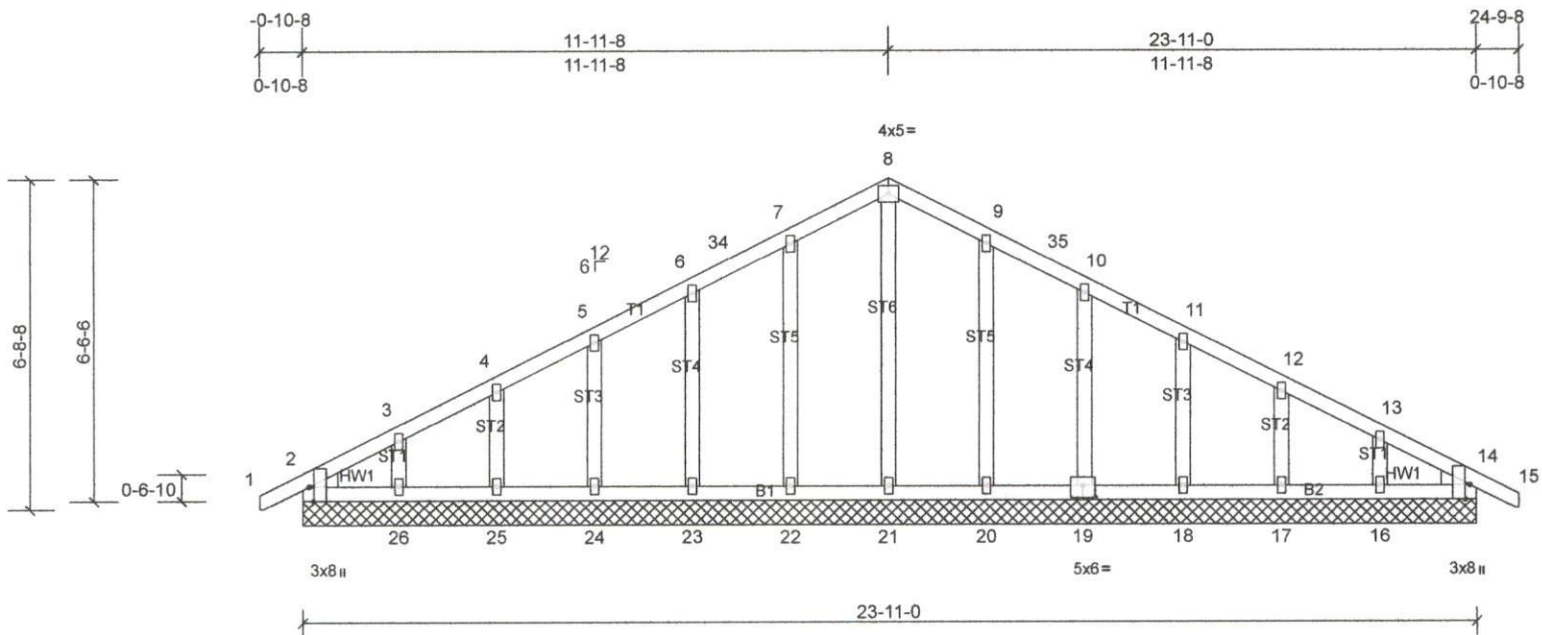
REACTIONS (lb/size) 2=850/0-3-8, (min. 0-1-8), 6=850/0-3-8, (min. 0-1-8)
 Max Horiz 2=-69 (LC 13)
 Max Uplift 2=-5 (LC 15), 6=-5 (LC 16)
 Max Grav 2=1007 (LC 2), 6=1007 (LC 2)

FORCES (lb) - Max. Comp./Max. Ten. - All forces 250 (lb) or less except when shown.
 TOP CHORD 2-3=-1609/412, 3-17=-1419/403, 4-17=-1333/421, 4-18=-1333/421, 5-18=-1419/403, 5-6=-1609/412
 BOT CHORD 2-10=-273/1367, 10-19=-89/922, 19-20=-89/922, 9-20=-89/922, 8-9=-89/922, 6-8=-275/1367
 WEBS 4-8=-115/526, 5-8=-341/230, 4-10=-115/526, 3-10=-341/230

NOTES

- Unbalanced roof live loads have been considered for this design.
- Wind: ASCE 7-10; Vult=130mph (3-second gust) Vasd=103mph; TCDL=6.0psf; BCDL=6.0psf; h=25ft; Cat. II; Exp B; Enclosed; MWFRS (envelope) and C-C Exterior (2) zone; cantilever left and right exposed; end vertical left and right exposed; C-C for members and forces & MWFRS for reactions shown; Lumber DOL=1.60 plate grip DOL=1.33
- TCLL: ASCE 7-10; Pr=20.0 psf (roof live load: Lumber DOL=1.15 Plate DOL=1.15); Pg=20.0 psf (ground snow); Pf=13.9 psf (flat roof snow: Lumber DOL=1.15 Plate DOL=1.15); Category II; Exp B; Fully Exp.; Ct=1.10
- Unbalanced snow loads have been considered for this design.
- This truss has been designed for greater of min roof live load of 12.0 psf or 2.00 times flat roof load of 13.9 psf on overhangs non-concurrent with other live loads.
- * This truss has been designed for a live load of 20.0psf on the bottom chord in all areas where a rectangle 3-06-00 tall by 2-00-00 wide will fit between the bottom chord and any other members, with BCDL = 10.0psf.
- One RT7A MiTek connectors recommended to connect truss to bearing walls due to UPLIFT at jt(s) 2 and 6. This connection is for uplift only and does not consider lateral forces.
- This truss is designed in accordance with the 2015 International Residential Code sections R502.11.1 and R802.10.2 and referenced standard ANSI/TPI 1.

LOAD CASE(S) Standard



Scale = 1:47.1

Plate Offsets (X, Y): [2:0-3-8,Edge], [14:0-3-8,Edge], [19:0-3-0,0-3-0]

Loading	(psf)	Spacing	2-0-0	CSI	DEFL	in	(loc)	l/defl	L/d	PLATES	GRIP	
TCLL (roof)	20.0	Plate Grip DOL	1.15	TC	0.06	Vert(LL)	n/a	-	n/a	999	MT20	244/190
Snow (Pf/Pg)	13.9/20.0	Lumber DOL	1.15	BC	0.03	Vert(CT)	n/a	-	n/a	999		
TCDL	10.0	Rep Stress Incr	YES	WB	0.08	Horz(CT)	0.00	16	n/a	n/a		
BCLL	0.0*	Code	IRC2015/TPI2014	Matrix-MSH								
BCDL	10.0											
										Weight: 134 lb	FT = 20%	

LUMBER
TOP CHORD 2x4 SP No.2
BOT CHORD 2x4 SP No.2
OTHERS 2x4 SP No.3 *Except* ST6:2x4 SP No.2
WEDGE Left: 2x4 SP No.3
Right: 2x4 SP No.3

BRACING
TOP CHORD
BOT CHORD

Structural wood sheathing directly applied or 6-0-0 oc purlins.
Rigid ceiling directly applied or 10-0-0 oc bracing.

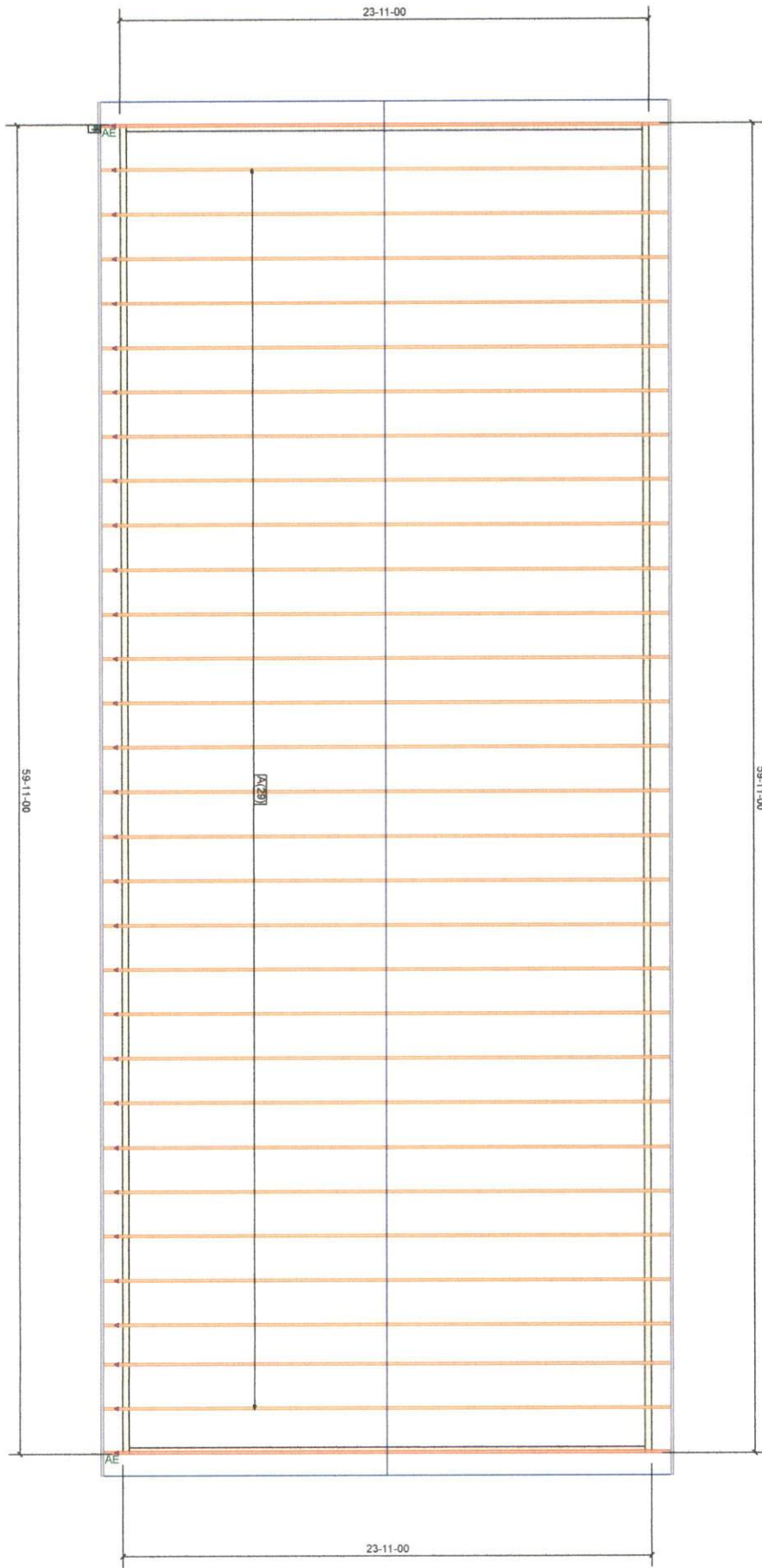
MiTek recommends that Stabilizers and required cross bracing be installed during truss erection, in accordance with Stabilizer Installation guide.

REACTIONS All bearings 23-11-0.
(lb) - Max Horiz 2=-69 (LC 13), 27=-69 (LC 13)
Max Uplift All uplift 100 (lb) or less at joint(s) 2, 16, 17, 18, 19, 20, 22, 23, 24, 25, 26, 27
Max Grav All reactions 250 (lb) or less at joint(s) 2, 14, 16, 17, 18, 19, 20, 21, 22, 23, 24, 25, 26, 27, 31

FORCES (lb) - Max. Comp./Max. Ten. - All forces 250 (lb) or less except when shown.

- NOTES**
- Unbalanced roof live loads have been considered for this design.
 - Wind: ASCE 7-10; Vult=130mph (3-second gust) Vasd=103mph; TCDL=6.0psf; BCDL=6.0psf; h=25ft; Cat. II; Exp B; Enclosed; MWFRS (envelope) and C-C Exterior (2) zone; cantilever left and right exposed; end vertical left and right exposed; C-C for members and forces & MWFRS for reactions shown; Lumber DOL=1.60 plate grip DOL=1.33
 - Truss designed for wind loads in the plane of the truss only. For studs exposed to wind (normal to the face), see Standard Industry Gable End Details as applicable, or consult qualified building designer as per ANSI/TPI 1.
 - TCLL: ASCE 7-10; Pr=20.0 psf (roof live load: Lumber DOL=1.15 Plate DOL=1.15); Pg=20.0 psf (ground snow); Pf=13.9 psf (flat roof snow: Lumber DOL=1.15 Plate DOL=1.15); Category II; Exp B; Fully Exp.; Ct=1.10
 - Unbalanced snow loads have been considered for this design.
 - This truss has been designed for greater of min roof live load of 12.0 psf or 2.00 times flat roof load of 13.9 psf on overhangs non-concurrent with other live loads.
 - All plates are 2x4 MT20 unless otherwise indicated.
 - Gable requires continuous bottom chord bearing.
 - Gable studs spaced at 2-0-0 oc.
 - * This truss has been designed for a live load of 20.0psf on the bottom chord in all areas where a rectangle 3-06-00 tall by 2-00-00 wide will fit between the bottom chord and any other members.
 - One RT7A MiTek connectors recommended to connect truss to bearing walls due to UPLIFT at jt(s) 2, 22, 23, 24, 25, 26, 20, 19, 18, 17, and 16. This connection is for uplift only and does not consider lateral forces.
 - This truss is designed in accordance with the 2015 International Residential Code sections R502.11.1 and R802.10.2 and referenced standard ANSI/TPI 1.

LOAD CASE(S) Standard



ROOF TRUSS FRAMING
DRAWING SCALE : NTS

PROJECT NUMBER	20050081
SHEET NUMBER	1 / 1

REVISION	DATE	BY
	3/22	M. Kaufman

Wicker
Shop
ROOF TRUSS PLACEMENT PLAN

