

STRUCTURAL DESIGN BY:  
 SOUTHERN ENGINEERS, P.A.  
 576 BENSON DRIVE RALEIGH, NC 27604  
 LICENSE: C-4712, P.E. NO. 18425-0417  
**PROJECT #:** 21-2674 (LOTS 15-20)  
 \* Engineer seal applies only to structural components on this document. Seal does not include construction means, methods, techniques, sequences, procedures or safety precautions.  
 \* Any deviations or discrepancies on plans are to be brought to the immediate attention of Southern Engineers. Failure to do so will void Southern Engineer's liability.  
 \* Seal is valid for a project permitted within one year from date of seal.  
 \* Use of these plans constitutes approval of terms and conditions as defined in the customer agreement.

REFER TO "02" SHEETS FOR STANDARD DETAILS, BRACING DETAILS AND STRUCTURAL NOTES.

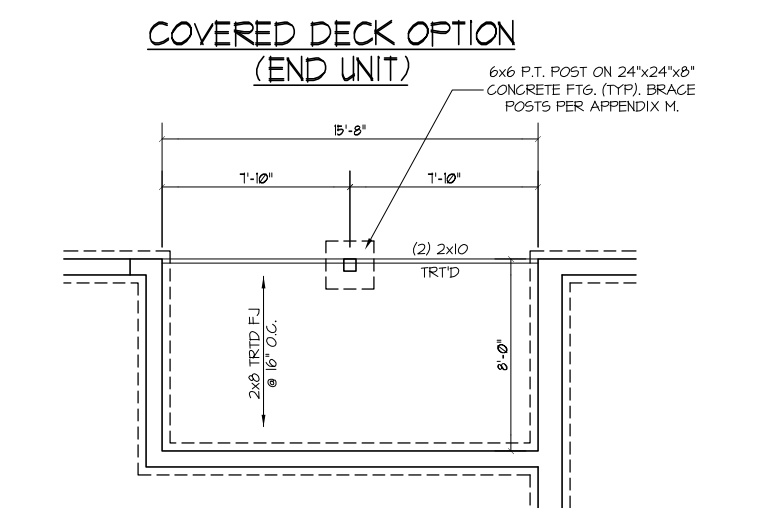
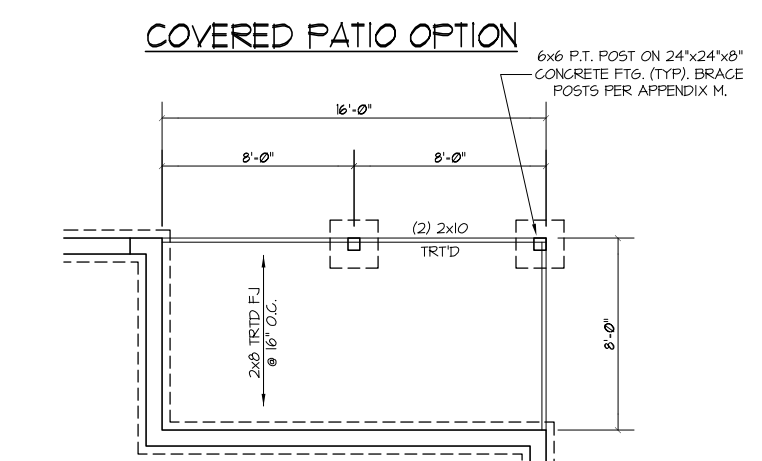
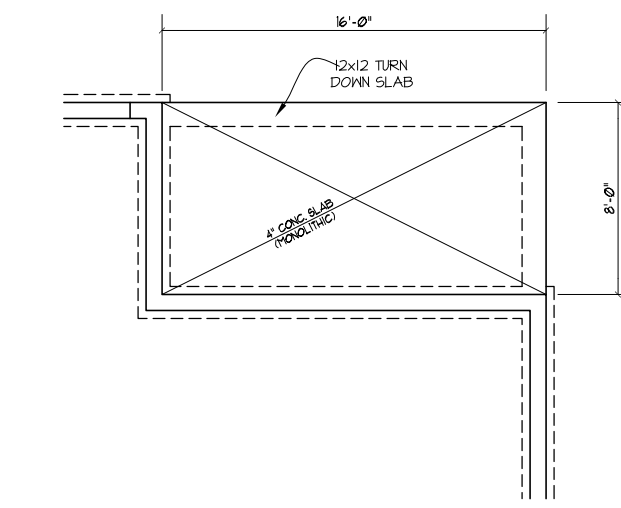
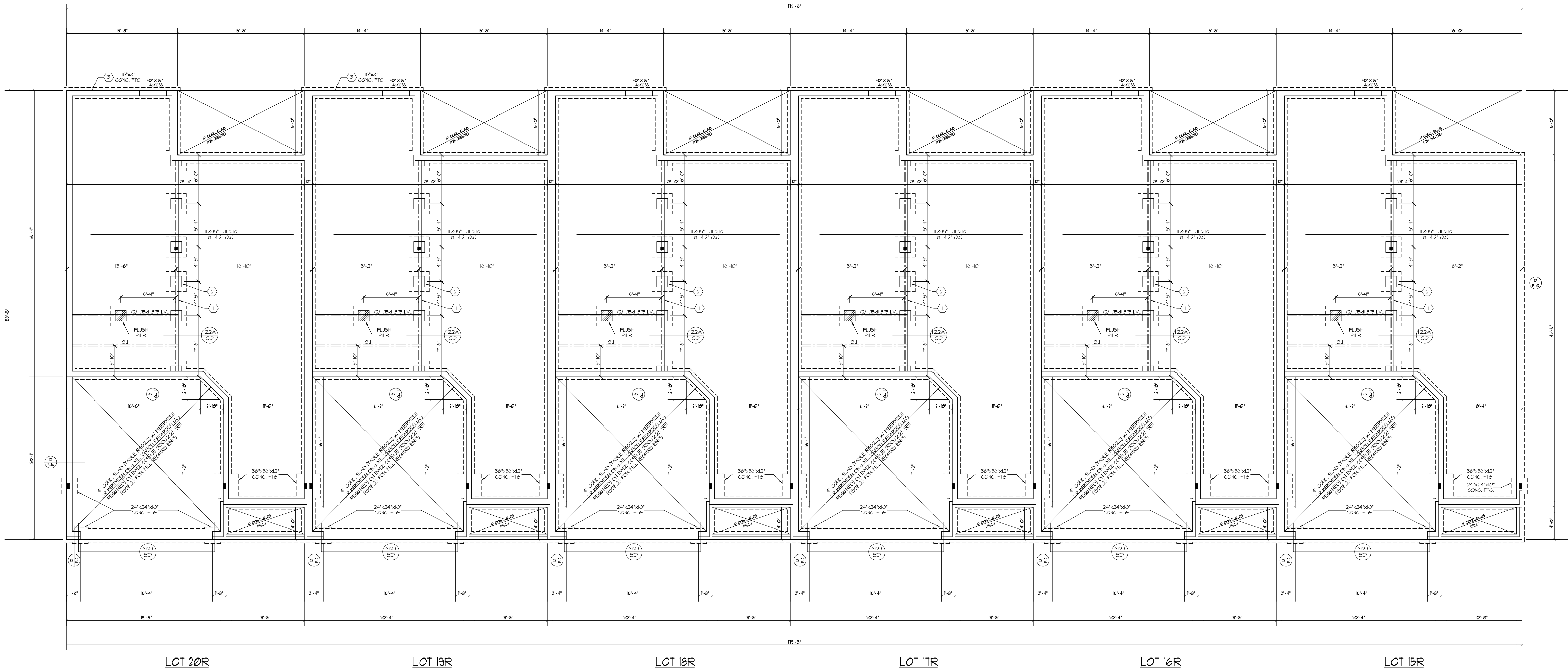
# DYNAMIC DESIGN GROUP, INC.

David D Grorud  
 (919) 601-1406  
 DynamicDesignGroup@gmail.com  
 www.DynamicDesignGroupInc.com

The drawings and specifications (plans) contained on these pages are the property of Dynamic Design Group and are offered to the named client or contractor for a conditional one time use. The conditional use is limited to the lot and subdivision specified herein, and only for said location. COPYRIGHT 2021

Contractor shall verify all conditions and dimensions prior to construction. Any error or omissions shall be reported to Dynamic Design Group for corrections or justification. Once construction has commenced, the contractor shall assume all responsibility. Dimensions govern over scale, code governs over dimensions.

PROJECT FOR: **CAPITOL CITY HOMES**  
 LOCATION: **SPRING LAKE, NC**  
 LOT: **20R-15R**  
 SUBDIVISION: **HAWK RIDGE DR.**  
 COUNTY: **HARNETT**



- FOUNDATION STRUCTURAL NOTES**  
 NC 2008 NRS-1800, 1801, 1802, 1803, 1804, 1805, 1806, 1807, 1808, 1809, 1810, 1811, 1812, 1813, 1814, 1815, 1816, 1817, 1818, 1819, 1820, 1821, 1822, 1823, 1824, 1825, 1826, 1827, 1828, 1829, 1830, 1831, 1832, 1833, 1834, 1835, 1836, 1837, 1838, 1839, 1840, 1841, 1842, 1843, 1844, 1845, 1846, 1847, 1848, 1849, 1850, 1851, 1852, 1853, 1854, 1855, 1856, 1857, 1858, 1859, 1860, 1861, 1862, 1863, 1864, 1865, 1866, 1867, 1868, 1869, 1870, 1871, 1872, 1873, 1874, 1875, 1876, 1877, 1878, 1879, 1880, 1881, 1882, 1883, 1884, 1885, 1886, 1887, 1888, 1889, 1890, 1891, 1892, 1893, 1894, 1895, 1896, 1897, 1898, 1899, 1900, 1901, 1902, 1903, 1904, 1905, 1906, 1907, 1908, 1909, 1910, 1911, 1912, 1913, 1914, 1915, 1916, 1917, 1918, 1919, 1920, 1921, 1922, 1923, 1924, 1925, 1926, 1927, 1928, 1929, 1930, 1931, 1932, 1933, 1934, 1935, 1936, 1937, 1938, 1939, 1940, 1941, 1942, 1943, 1944, 1945, 1946, 1947, 1948, 1949, 1950, 1951, 1952, 1953, 1954, 1955, 1956, 1957, 1958, 1959, 1960, 1961, 1962, 1963, 1964, 1965, 1966, 1967, 1968, 1969, 1970, 1971, 1972, 1973, 1974, 1975, 1976, 1977, 1978, 1979, 1980, 1981, 1982, 1983, 1984, 1985, 1986, 1987, 1988, 1989, 1990, 1991, 1992, 1993, 1994, 1995, 1996, 1997, 1998, 1999, 2000

**PER UNIT CALCULATIONS**

WALL VENTED CRAIL SPACE	
REQUIRED	823.50 SQ. FT. / UNIT
PROVIDED	823.50 SQ. FT. / UNIT

**CLOSED CRAIL SPACE VENTILATION METHODS**

WALL VENTED CRAIL SPACE	
REQUIRED	823.50 SQ. FT. / UNIT
PROVIDED	823.50 SQ. FT. / UNIT

**FOUNDATION PLAN**  
 SCALE: 1/8" = 1'-0"

NOTES:  
 1) SEE SHEET D-1 FOR DETAILS  
 2) DIMENSIONS ARE TO EXTERIOR OF FOUNDATION

# HAWK RIDGE DRIVE

PLAN NAME

# BUILDING

PLAN I.D.

# 12-15-21

DATE

# S-1

SHEET