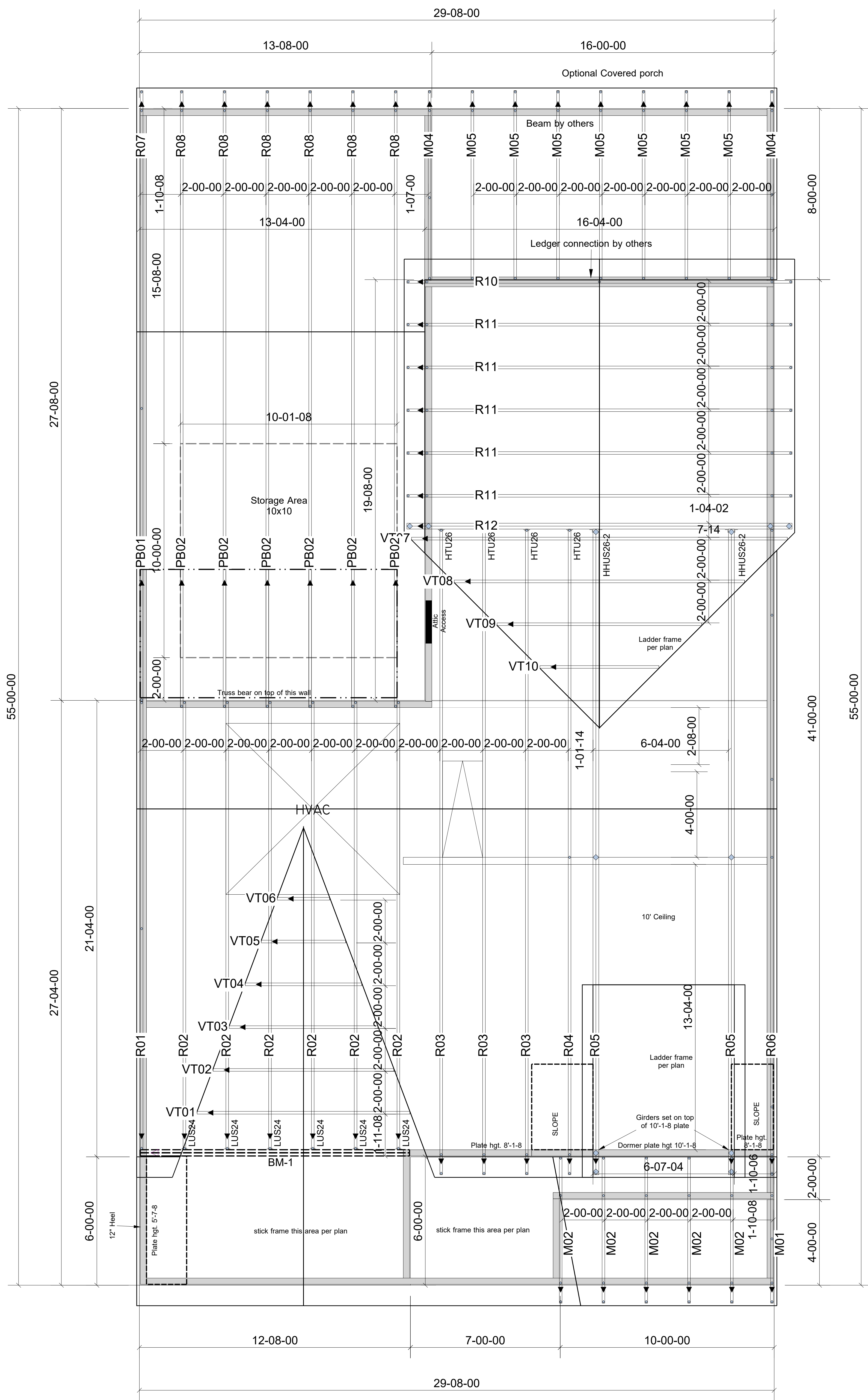


**WARNING!** Long span trusses, 60' or greater in length, require extreme care and experience for proper and safe handling and installation. For general handling and installation guidance, see the "Guide to Good Practice for Handling, Installing, Restraining & Bracing of Metal Plate Connected Wood Trusses" ("BCS1"), JOINTLY PRODUCED BY SBCA and TPI. For project specific guidance, consult with a registered design professional. ATLANTIC assumes no responsibility for the handling, installation or bracing of trusses.



Products				
PlotID	Length	Product	Plies	Net Qty
BM-1	14-00-00	1-3/4" x 11-7/8" VERSA-LAM® 2.0 3100 SP	2	2

Truss Connector Total List		
Manuf	Product	Qty
Simpson	HHUS26-2	2
Simpson	HTU26	4
Simpson	LUS24	6

▲ = LEFT END OF TRUSS

**NOT FOR CONSTRUCTION**



Moncks Corner/Easley, SC (800) 475-3999  
Sparta, NC (336) 372-2226

REVISIONS:

Client:	CAPITOL CITY HOMES, LLC		
Job:	LOT 20 VILLAS @ ANDERSON		
Plan Information:	FARREN		
NOT TO SCALE	Date:	/ /	
Drawn By:	AMH	Job #:	21-5123-R01
		Sales Rep:	KYLE GIBSON
		Phone:	

ROOF