

THIS DRAWING WAS PRODUCED BY JOHN D. HYDE AND MAY NOT BE MODIFIED IN ANY WAY NOR SHALL THIS DRAWING BE USED BY ANYONE OTHER THAN BUFFALO RIVER TRUSS, LLC OR ITS ASSIGNS WITHOUT THE EXPRESS WRITTEN PERMISSION OF JOHN D. HYDE WHOSE PROFESSIONAL ENGINEER'S STAMP APPEARS ON THIS DRAWING.

BILL OF MATERIALS

| MARK | DESCRIPTION | LENGTH | NUMBER REQUIRED | MATERIAL |
|------|--------------|------------------------|-----------------|-----------|
| A1 | TOP CHORD | L 1 1/2 x 1 1/2 x 3/16 | 21'-1" | 2 50 KSI |
| A2 | BOTTOM CHORD | L 1 1/2 x 1 1/2 x 3/16 | 20'-6 1/2" | 2 50 KSI |
| A4 | VERTICAL END | L 1 1/2 x 1 1/2 x 3/16 | 1'-5 1/2" | 2 50 KSI |
| A5 | TIE | L 1 1/4 x 1 1/4 x 1/8 | 1'-10" | 2 50 KSI |
| A6 | TIE | L 1 1/4 x 1 1/4 x 1/8 | 20'-0" | 1 50 KSI |
| A7 | KNEE BRACE | L 1 1/2 x 1 1/2 x 3/16 | 3'-6" | 2 50 KSI |
| A8 | VERTICAL END | L 1 1/2 x 1 1/2 x 3/16 | 1'-5 1/2" | 2 50 KSI |
| W1 | WEB | L 1 1/4 x 1 1/4 x 1/8 | 1'-7 1/2" | 40 50 KSI |
| W2 | WEB | L 1 1/4 x 1 1/4 x 1/8 | 1'-4 1/2" | 2 50 KSI |
| B1 | BASE | L 1 1/2 x 1 1/2 x 3/16 | 5 1/2" | 2 50 KSI |

DESIGN LOAD NOTES:

- TRUSS SPACING = 12' ALLOWABLE DEAD LOAD = 6 PSF
- TRUSS SPACING = 10' ALLOWABLE DEAD LOAD = 9 PSF
- TRUSS SPACING = 8' ALLOWABLE DEAD LOAD = 15 PSF

DESIGN CRITERIA - IBC 2012, 2015, & 2018

- DESIGN LOADS PER ASCE 7-10 & 7-16
- REQUIREMENT FOR STEEL - ASTM 50 KSI OR AS NOTED.
- ROOF LIVE LOAD = 20 PSF
DEAD LOAD = SEE DESIGN LOAD NOTES
- DESIGN WIND SPEED = 115 MPH
- WIND RISK CATEGORY II
- WIND EXPOSURE CATEGORY B
- BUILDING CATEGORY II
- GROUND SNOW LOAD = 15 PSF
- IMPORTANCE FACTOR 1.0

THIS DRAWING IS FOR USE ON THE FOLLOWING PROJECT ONLY:

BY:
JOE COUPEE
454 BAYLES RD
LILLINGTON, NC 27546.

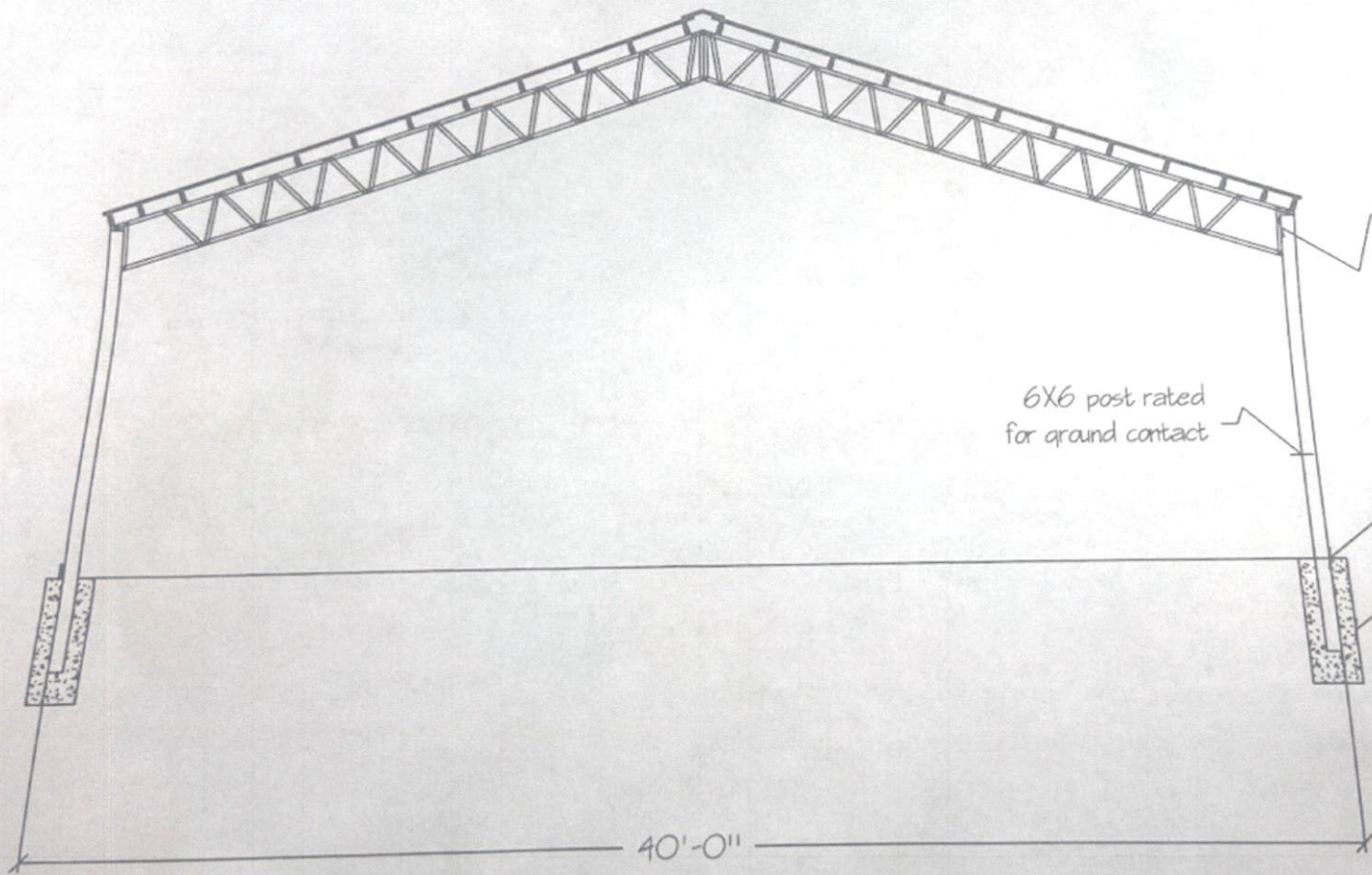
JOHN D. HYDE, PE
TN REG NO 23310
177 ARLINGTON ROAD
ARAB, AL 35016
PH 256-572-0195
jdhyde@mindspring.com

NOTES:

- PURLINS TO BE MINIMUM 2x6 #2 SYP (SPACED MAXIMUM 2'-0" O.C.).
- CONTRACTOR RESPONSIBLE FOR TEMPORARY CONSTRUCTION BRACING.
- FABRICATOR TO VERIFY DIMENSIONS BEFORE FABRICATION.
- THIS DESIGN IS FOR TRUSS ONLY.
- ALL WELDS AND WELDING PER AWS.
- STRUCTURAL STEEL AND FABRICATION PER AISC.
- MEMBER DIMENSIONS ARE TO BE ADJUSTED FOR SHORTER TRUSS LENGTHS.
- FASTENERS INSTALLED WITH TREATED WOOD MUST BE MANUFACTURER RECOMMENDED FOR USE WITH THE ASSOCIATED WOOD TREATMENT.



| | | | |
|-----------------------------------------------------------------------------------------------------|--------------------|---------------------|----------------------------|
| BUFFALO RIVER TRUSS, LLC 6764 Main St. So., Lobelville, Tennessee 37098 Ph (931) 589-2386 | | | |
| 40' STEEL TRUSS | | | |
| SCALE AS NOTED | DATE 09-16-2021 | DRAWN BY J. HYDE | DRAWING NO. 21-0916-40A |
| TRUSS DETAIL - WITH KNEE BRACE | | | SHEET NO. 1 OF 1 |



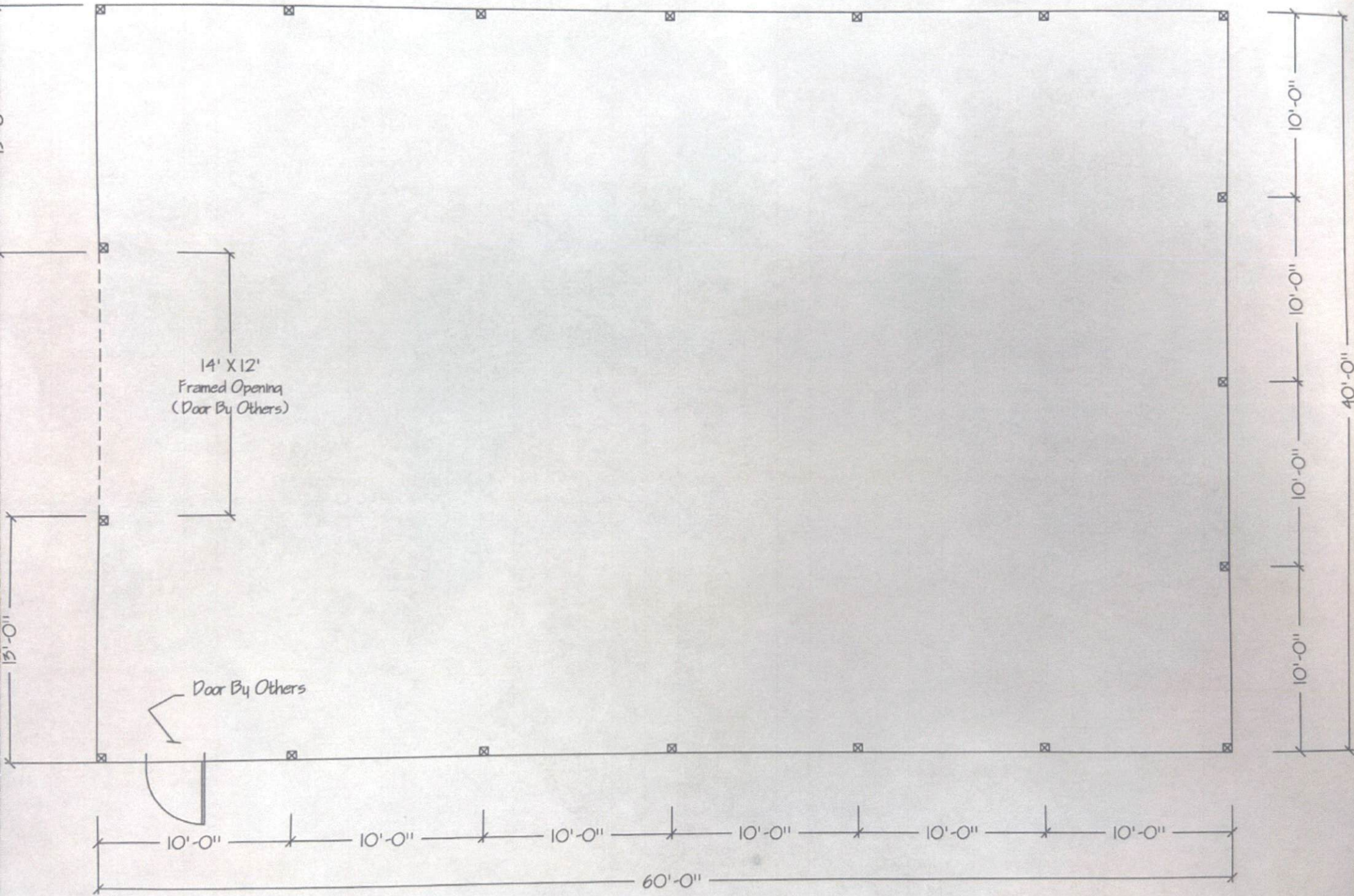
Min. 2) 1/2" Lag Bolts
Placed min 2' from top of piling

6X6 post rated
for ground contact

Post depth 36" min.

Hole Min. 18" Diameter and 42" De
Post sits on concrete cap or base

40'-0"



14' X 12'
Framed Opening
(Door By Others)

Door By Others

10'-0"

10'-0"

10'-0"

10'-0"

10'-0"

10'-0"

60'-0"

10'-0"

10'-0"

10'-0"

10'-0"

40'-0"