

THIS DRAWING WAS PRODUCED BY JOHN D. HYDE AND MAY NOT BE MODIFIED IN ANY WAY NOR SHALL THIS DRAWING BE USED BY ANYONE OTHER THAN BUFFALO RIVER TRUSS, LLC OR ITS ASSIGNS WITHOUT THE EXPRESS WRITTEN PERMISSION OF JOHN D. HYDE WHOSE PROFESSIONAL ENGINEER'S STAMP APPEARS ON THIS DRAWING.

BILL OF MATERIALS

MARK	DESCRIPTION	LENGTH	NUMBER REQUIRED	MATERIAL
A1	TOP CHORD	L 1 1/2 x 1 1/2 x 3/16	21'-1"	2 50 KSI
A2	BOTTOM CHORD	L 1 1/2 x 1 1/2 x 3/16	20'-6 1/2"	2 50 KSI
A4	VERTICAL END	L 1 1/2 x 1 1/2 x 3/16	1'-5 1/2"	2 50 KSI
A5	TIE	L 1 1/4 x 1 1/4 x 1/8	1'-10"	2 50 KSI
A6	TIE	L 1 1/4 x 1 1/4 x 1/8	20'-0"	1 50 KSI
A7	KNEE BRACE	L 1 1/2 x 1 1/2 x 3/16	3'-6"	2 50 KSI
A8	VERTICAL END	L 1 1/2 x 1 1/2 x 3/16	1'-5 1/2"	2 50 KSI
W1	WEB	L 1 1/4 x 1 1/4 x 1/8	1'-7 1/2"	40 50 KSI
W2	WEB	L 1 1/4 x 1 1/4 x 1/8	1'-4 1/2"	2 50 KSI
B1	BASE	L 1 1/2 x 1 1/2 x 3/16	5 1/2"	2 50 KSI



DESIGN LOAD NOTES:

- TRUSS SPACING = 12' ALLOWABLE DEAD LOAD = 6 PSF
- TRUSS SPACING = 10' ALLOWABLE DEAD LOAD = 9 PSF
- TRUSS SPACING = 8' ALLOWABLE DEAD LOAD = 15 PSF

DESIGN CRITERIA - IBC 2012, 2015, & 2018

- DESIGN LOADS PER ASCE 7-10 & 7-16
- REQUIREMENT FOR STEEL - ASTM 50 KSI OR AS NOTED.
- ROOF LIVE LOAD = 20 PSF
DEAD LOAD = SEE DESIGN LOAD NOTES
- DESIGN WIND SPEED = 115 MPH
- WIND RISK CATEGORY II
- WIND EXPOSURE CATEGORY B
- BUILDING CATEGORY II
- GROUND SNOW LOAD = 15 PSF
- IMPORTANCE FACTOR 1.0

NOTES:

- PURLINS TO BE MINIMUM 2x6 #2 SYP (SPACED MAXIMUM 2'-0" O.C.).
- CONTRACTOR RESPONSIBLE FOR TEMPORARY CONSTRUCTION BRACING.
- FABRICATOR TO VERIFY DIMENSIONS BEFORE FABRICATION.
- THIS DESIGN IS FOR TRUSS ONLY.
- ALL WELDS AND WELDING PER AWS.
- STRUCTURAL STEEL AND FABRICATION PER AISC.
- MEMBER DIMENSIONS ARE TO BE ADJUSTED FOR SHORTER TRUSS LENGTHS.
- FASTENERS INSTALLED WITH TREATED WOOD MUST BE MANUFACTURER RECOMMENDED FOR USE WITH THE ASSOCIATED WOOD TREATMENT.

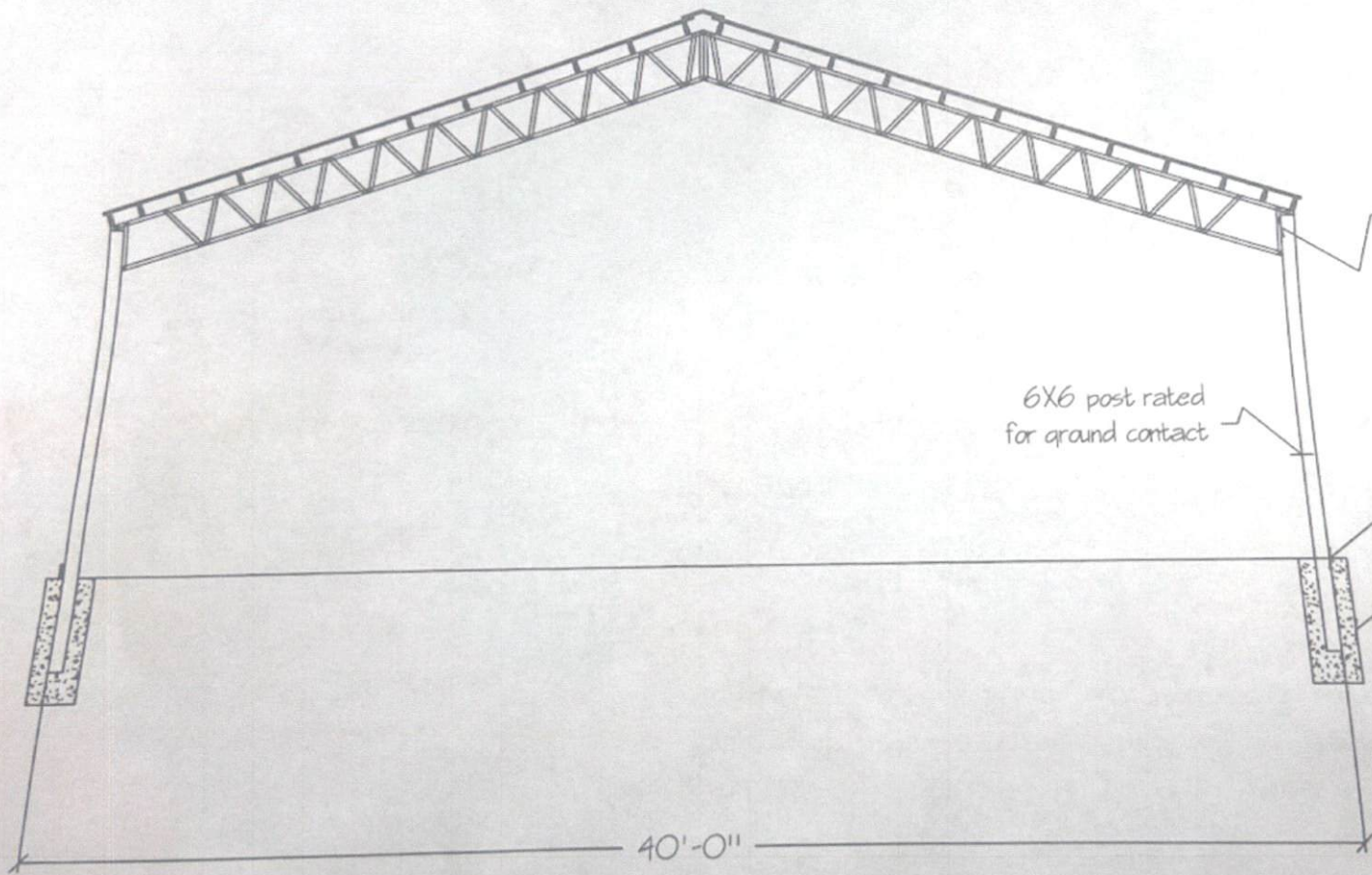
THIS DRAWING IS FOR USE ON THE FOLLOWING PROJECT ONLY:

BY:
JOE COUPEE
454 BAYLES RD
LILLINGTON, NC 27546.

JOHN D. HYDE, PE
TN REG NO 23310
177 ARLINGTON ROAD
ARAB, AL 35016
PH 256-572-0195
jdhyde@mindspring.com



BUFFALO RIVER TRUSS, LLC			
6764 Main St. So., Lobelville, Tennessee 37098 Ph (931) 589-2386			
40' STEEL TRUSS			
SCALE AS NOTED	DATE 09-16-2021	DRAWN BY J. HYDE	DRAWING NO. 21-0916-40A
TRUSS DETAIL - WITH KNEE BRACE			SHEET NO. 1 OF 1



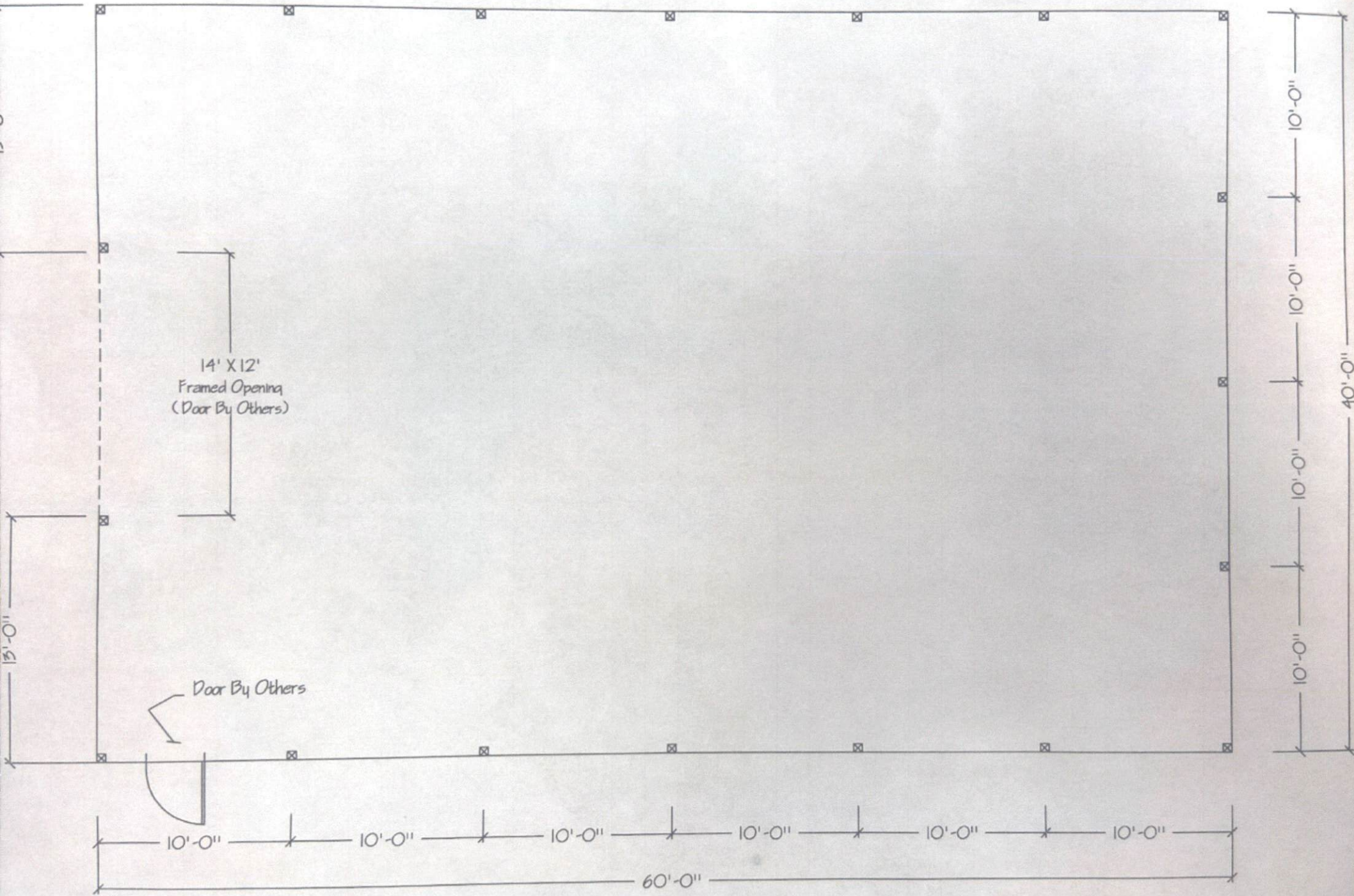
Min. 2) 1/2" Lag Bolts
Placed min 2' from top of piling

6X6 post rated
for ground contact

Post depth 36" min.

Hole Min. 18" Diameter and 42" De
Post sits on concrete cap or base

40'-0"



14' X 12'
Framed Opening
(Door By Others)

Door By Others

10'-0"

10'-0"

10'-0"

10'-0"

10'-0"

10'-0"

60'-0"

10'-0"

10'-0"

10'-0"

10'-0"

40'-0"