



COMMENTS: \_\_\_\_\_

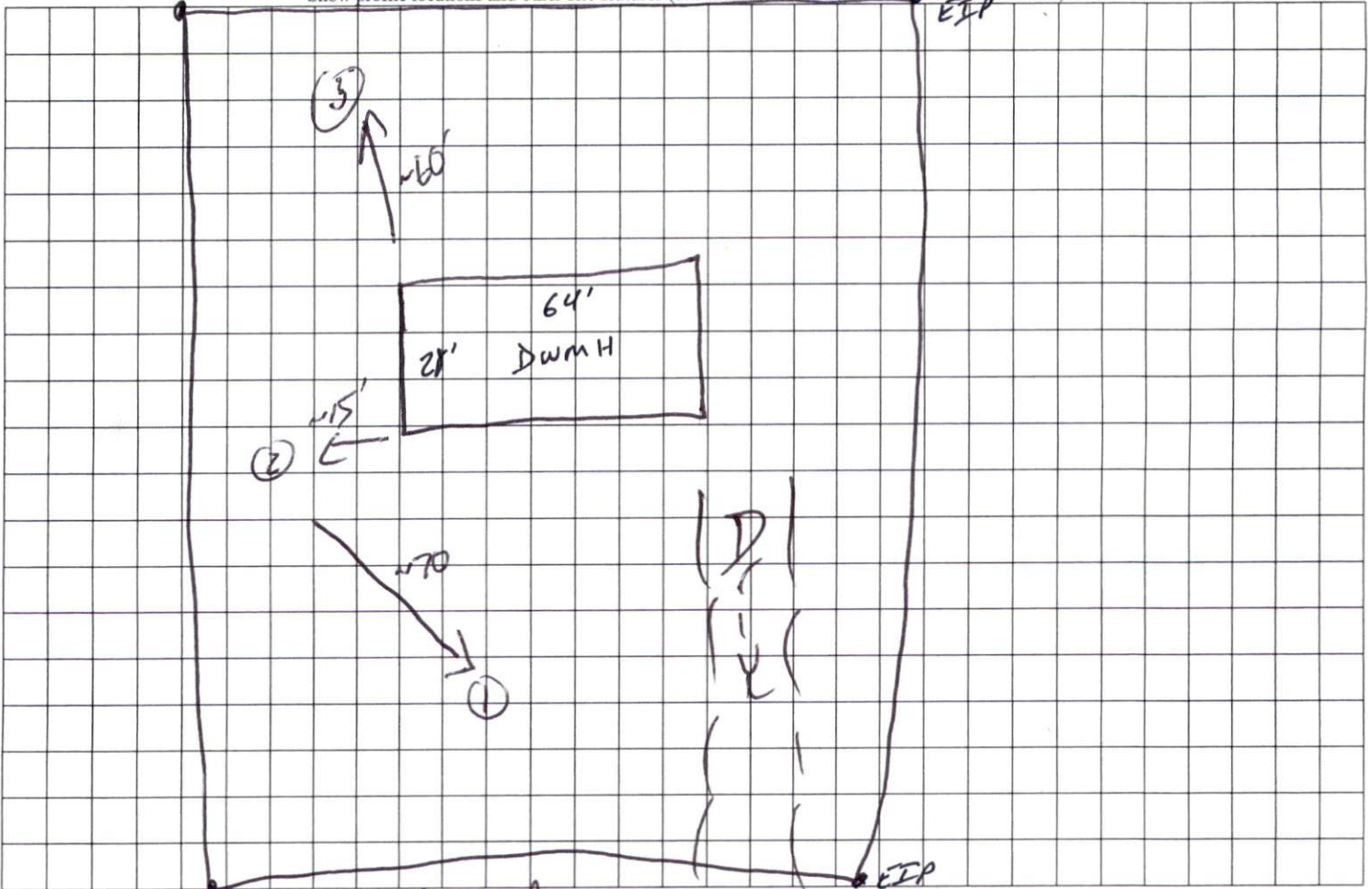
LANDSCAPE POSITIONS	GROUP	TEXTURES	.1955 LTAR	CONSISTENCE MOIST	WET
R-RIDGE	I	S-SAND	1.2 - 0.8	VFR-VERY FRIABLE	NS-NON-STICKY
S-SHOULDER SLOPE		LS-LOAMY SAND		FR-FRIABLE	SS-SLIGHTLY STICKY
L-LINEAR SLOPE	II	SL-SANDY LOAM	0.8 - 0.6	FI-FIRM	S-STICKY
FS-FOOT SLOPE		L-LOAM		VFI-VERY FIRM	VS-VERY STICKY
N-NOSE SLOPE	III	SI-SILT	0.6 - 0.3	EFI-EXTREMELY FIRM	NP-NON-PLASTIC
H-HEAD SLOPE		SIL-SILT LOAM			SP-SLIGHTLY STICKY
CC-CONCLAVE SLOPE		CL-CLAY LOAM			P-PLASTIC
CV-CONVEX SLOPE		SCL-SANDY CLAY LOAM			VP-VERY PLASTIC
T-TERRACE	IV	SIC-SILTY CLAY	0.4 - 0.1		
FP-FLOOD PLAN		C-CLAY			
		SC-SANDY CLAY			

STRUCTURE  
 SG-SINGLE GRAIN  
 M-MASSIVE  
 CR-CRUMB  
 GR-GRANULAR  
 SBK-SUBANGULAR BLOCKY  
 ABK-ANGULAR BLOCKY  
 PL-PLATY  
 PR-PRISMATIC

MINERALOGY  
 SLIGHTLY EXPANSIVE  
 EXPANSIVE

*9-29-21  
 need IRONS Exposed*  
*10-7-21*

Show profile locations and other site features (dimensions, references or benchmark and North)



*Need more rd*