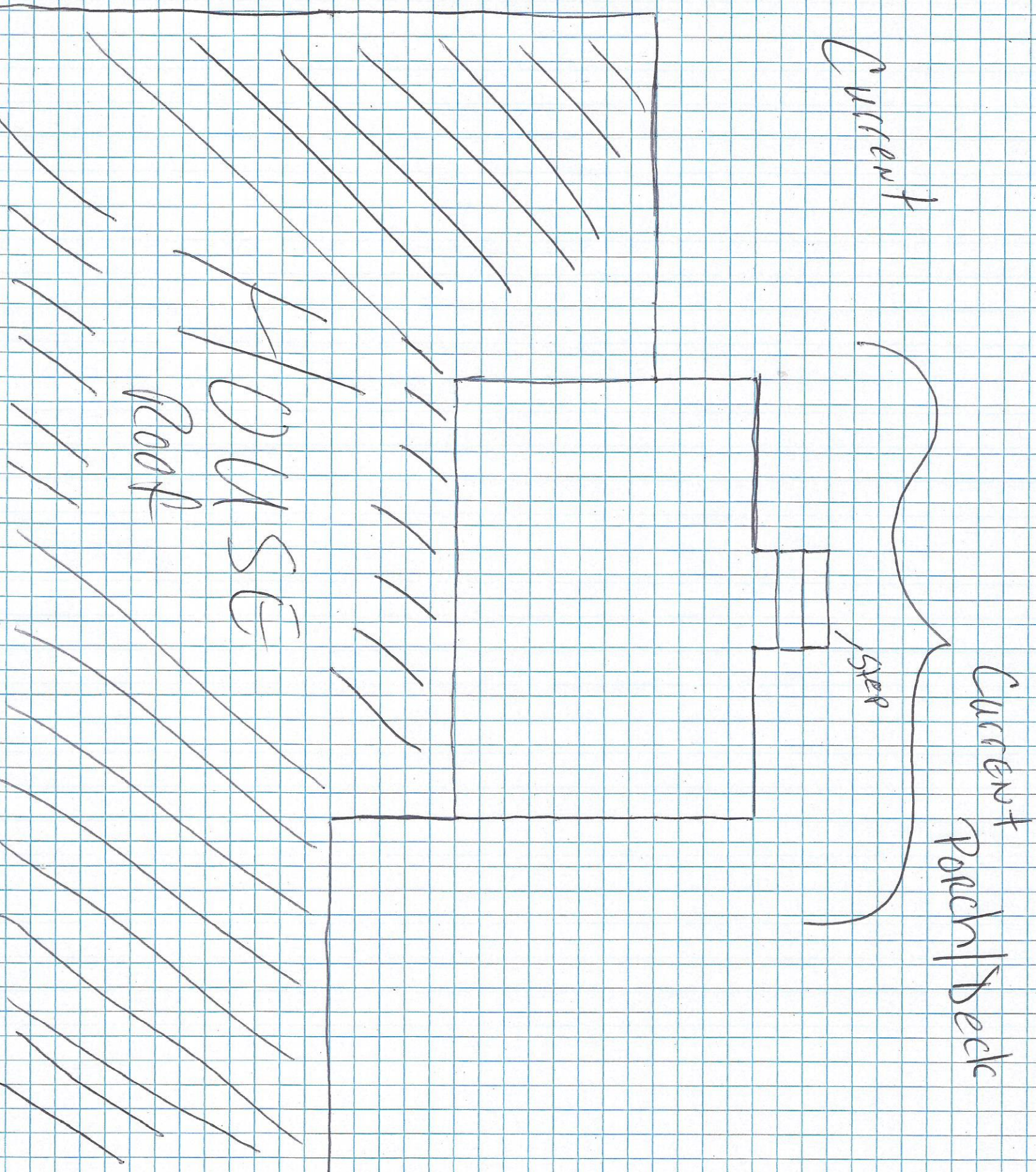


1 square = 1 foot



1 square = 1 foot

NEW / WITH OLD

Steps



NEW Deck
Extend

3 x 7

3 x 7

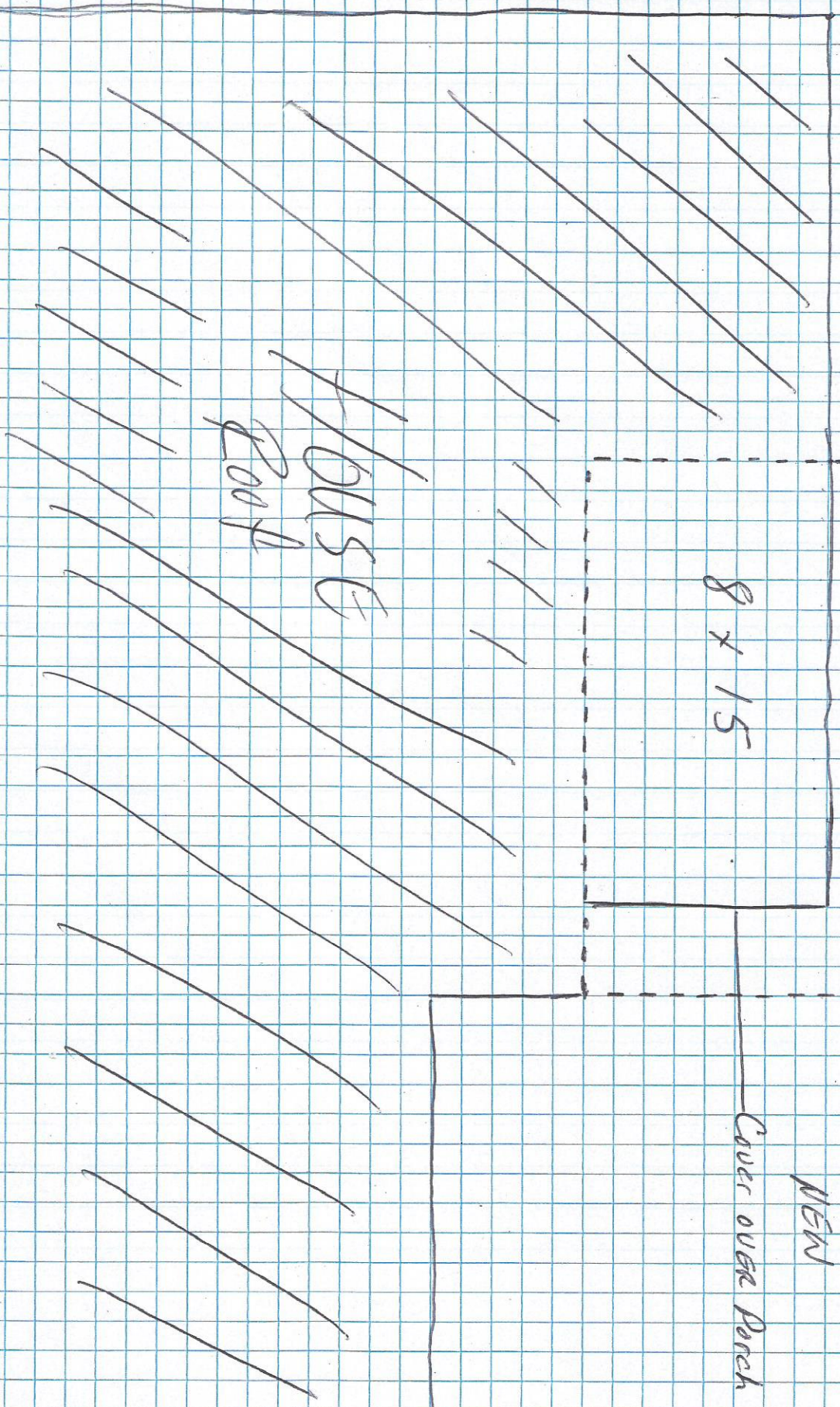
NEW Deck
Extend

8 x 15

NEW

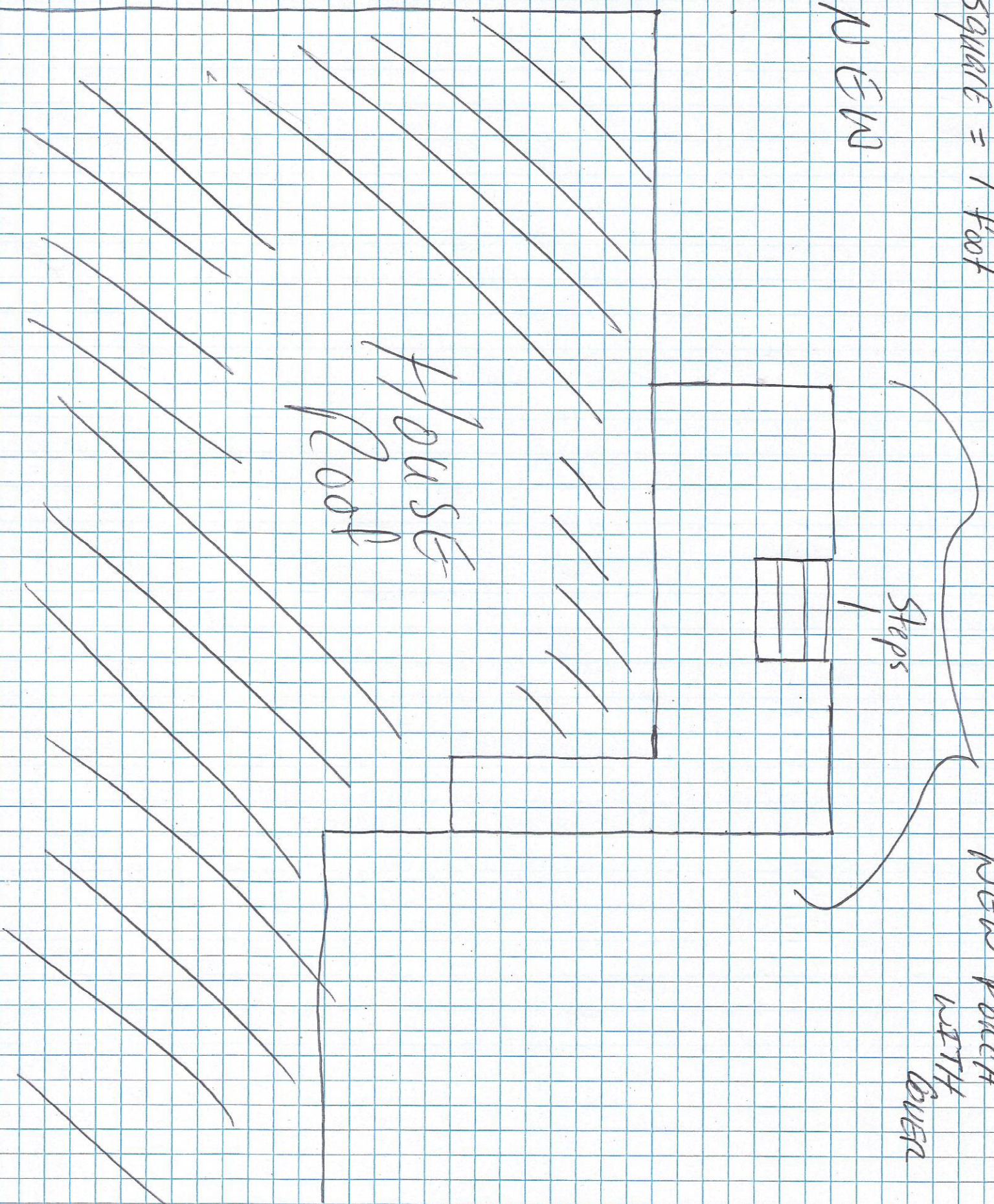
Cover over Porch

HOUSE
Roof



1 square = 1 foot

N END



Steps

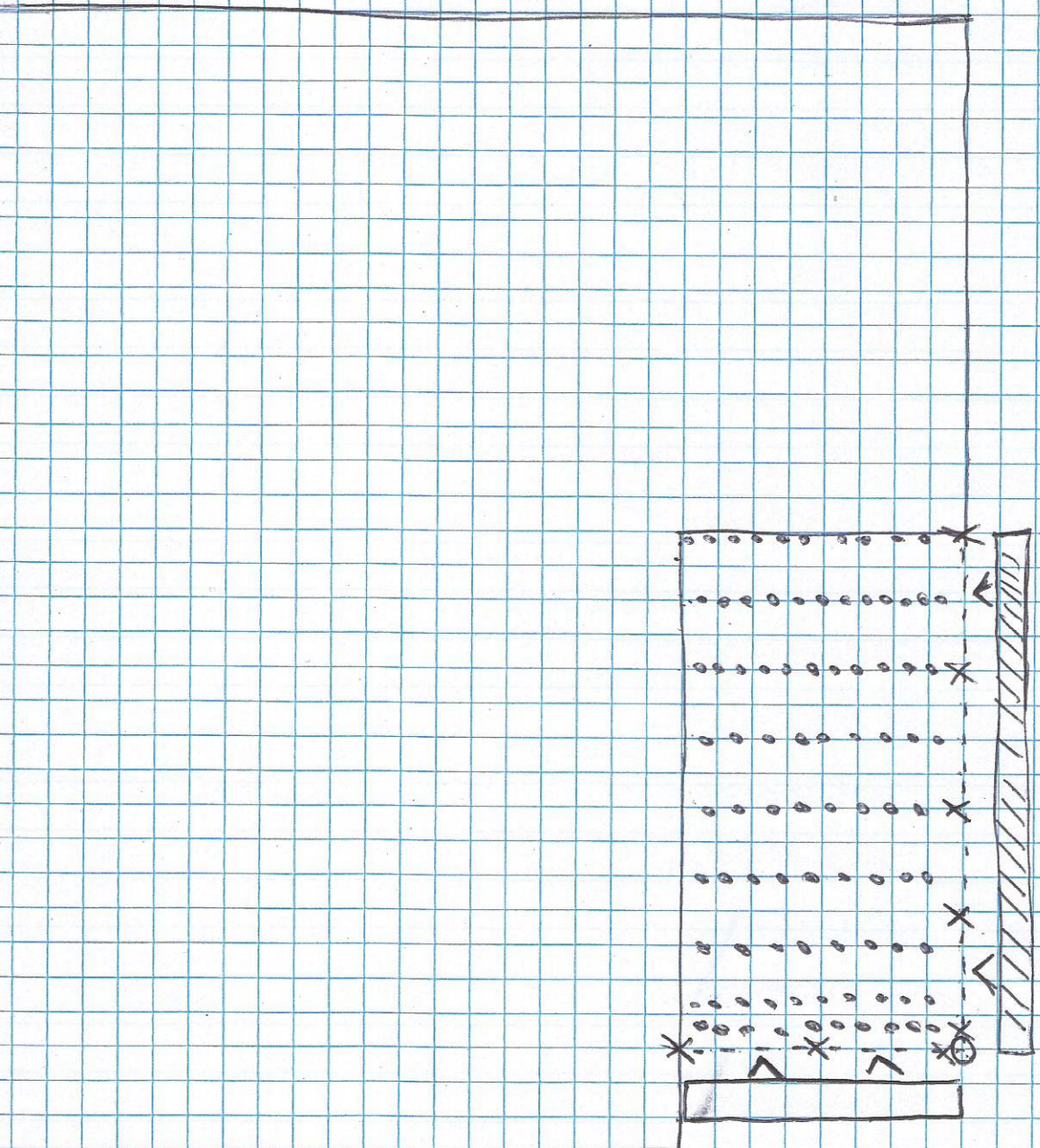
HOUSE
Roof

NEW PORCH
WITH
OVER

Post/Rafter

Lay out

1 SQUARE = 1 foot



$$X = 2 (2 \times 4 \times 8)$$

$$D = 1 (4 \times 4 \times 8)$$

$$\text{Hatched Box} = LVL (2 \times 6 \times 8)$$

$$\text{Empty Box} = LVL (2 \times 6 \times 8)$$

$$\text{Dotted Line} = \text{Rafter} (2 \times 6 \times 8)$$

