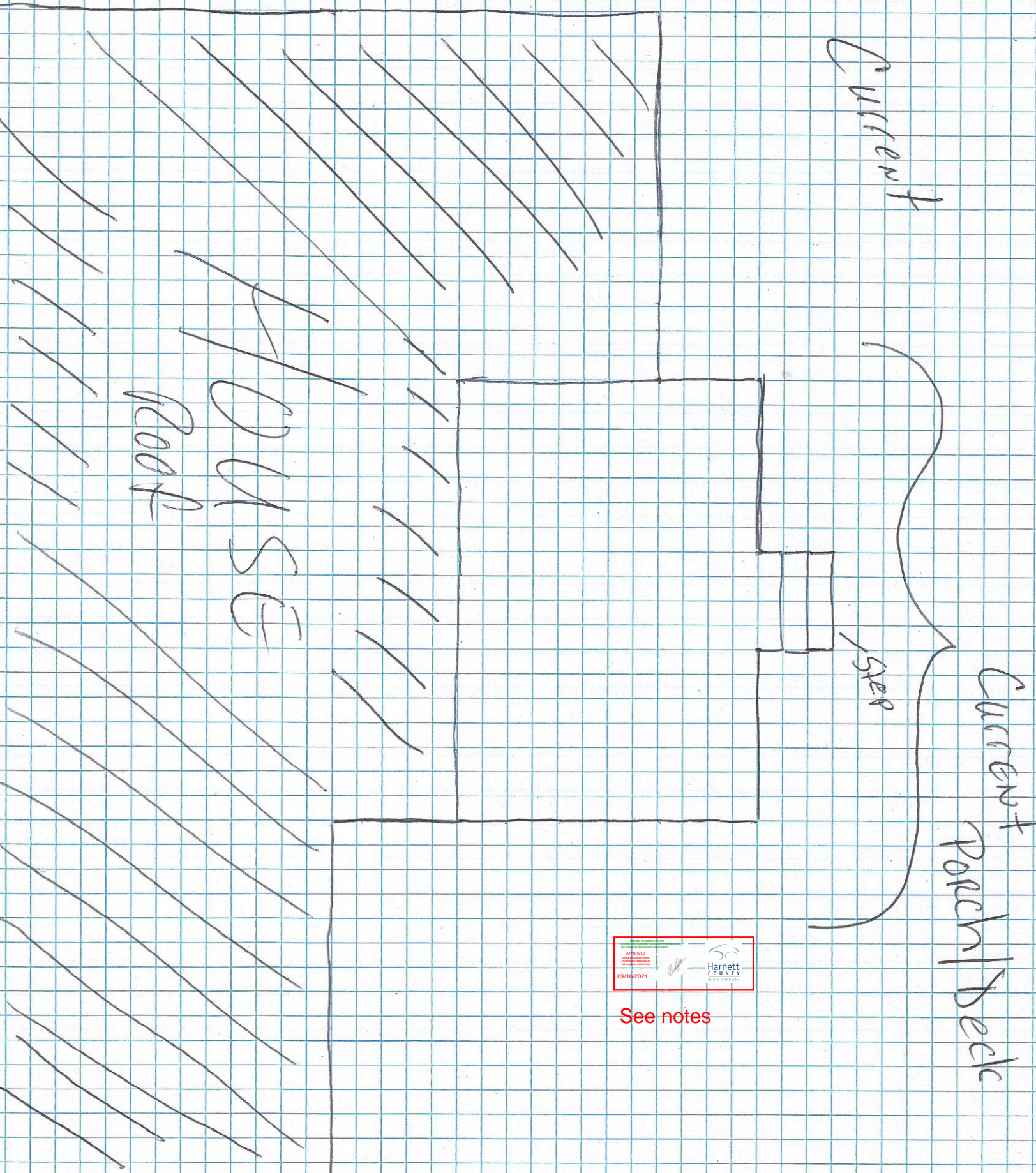


1 square = 1 foot



See notes

1 square = 1 foot

NEW / WITH OLD

Steps



NEW Deck
Extend

3 x 7

3 x 7

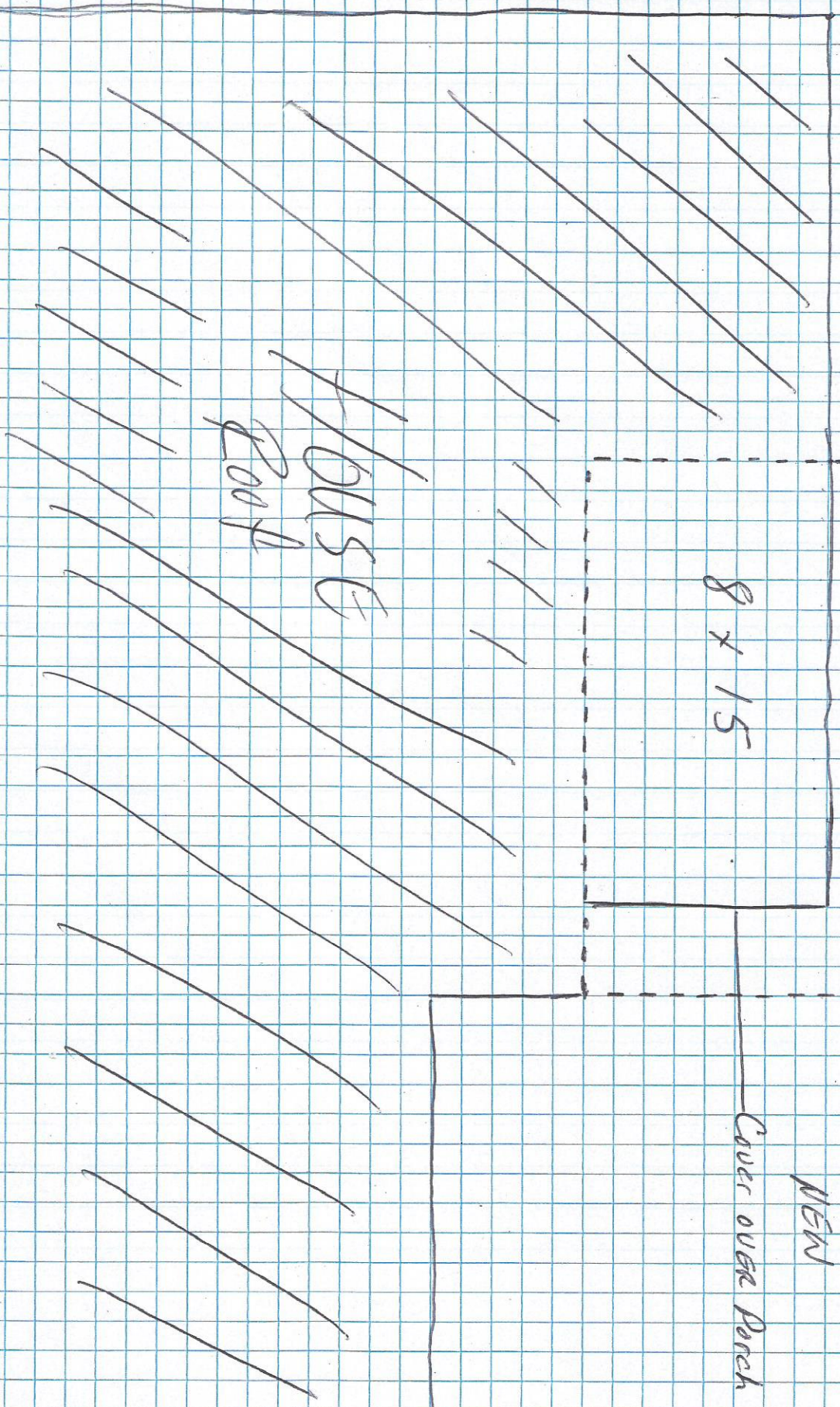
NEW Deck
Extend

8 x 15

NEW

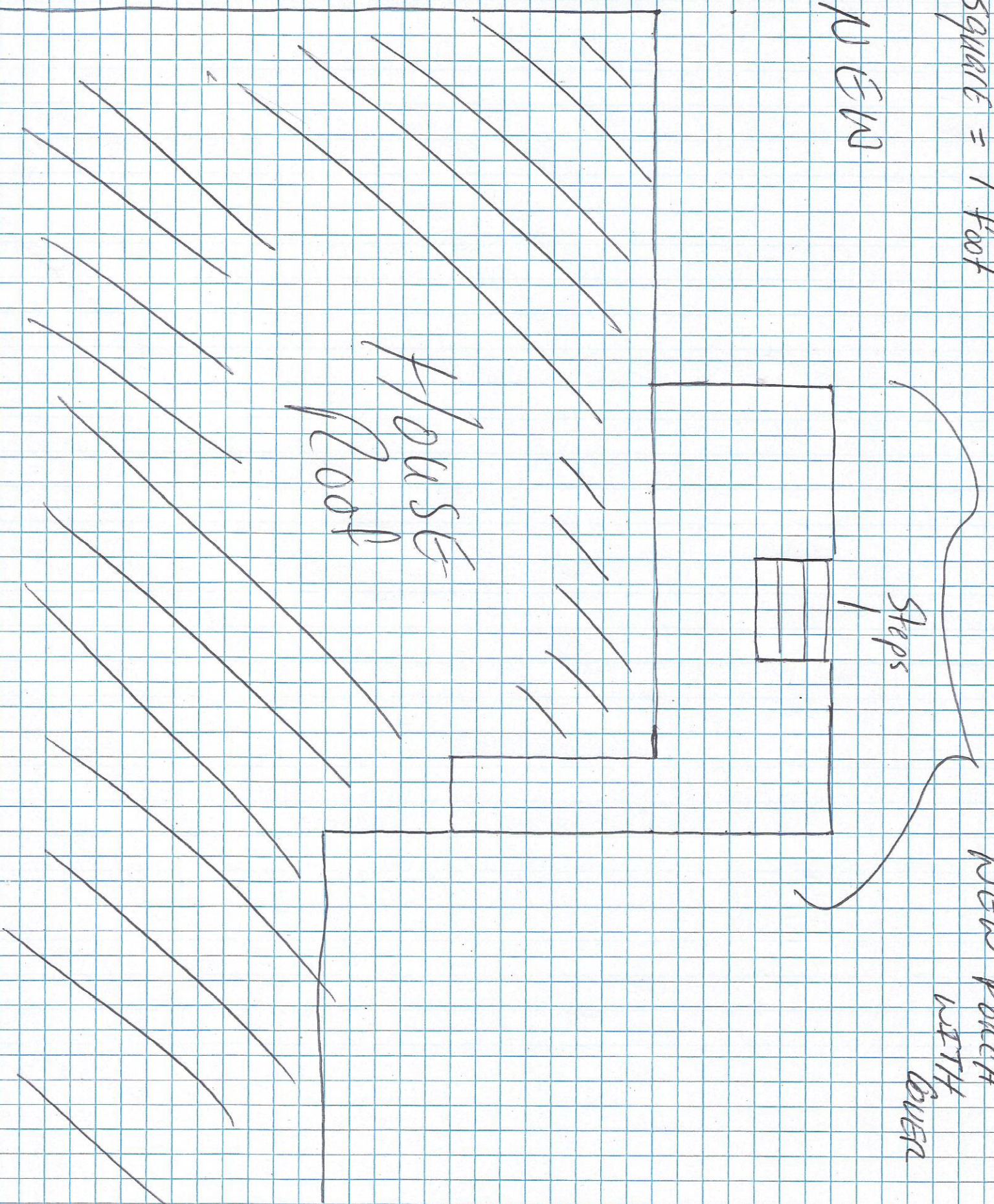
Cover over Porch

HOUSE
ROOF



1 square = 1 foot

N END



Steps

HOUSE
Roof

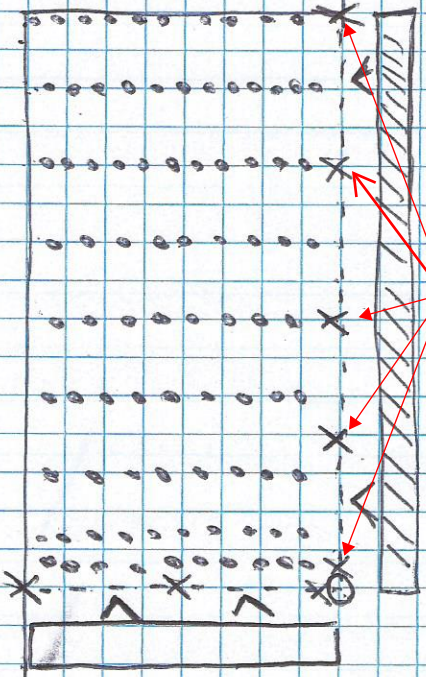
NEW PORCH
WITH
OVER

Post/Rafter

Lay out

1 SQUARE = 1 foot

Each column must have footing support or a code compliant girder must be below existing deck



X = 2 (2x4x8)

O = 1 (4x4x8)

[Hatched Box] = LVL (2x6x8)

[Empty Box] = LVL (2x6x8)

[Dotted Line] = Rafter (2x6x8)
Roof

