

**STRUCTURAL DESIGN NOTES:**

1. STRUCTURE IS DESIGNED FOR A MAXIMUM DESIGN OF:
  - a) FLOOR LOAD = 40 (PSF) LIVE LOAD & 10 (PSF) DEAD LOAD
  - b) ROOF LOAD = 20 (PSF) LIVE LOAD & 10 (PSF) DEAD LOAD
2. THIS STRUCTURAL DESIGN MEETS INTERNATIONAL CODE COUNCIL REQUIREMENTS FOR 115 MPH WIND SPEED (MAX.) AND SEISMIC ZONE D.

**VARIABLE**  
 8' WIDE = 6/12  
 10' WIDE = 6/12  
 12' WIDE = 6/12  
 14' WIDE = 5/12

METAL GUSSET PLATE TO ACT AS COLLAR TIE (SEE TRUSS DRAWINGS)

2x4 (#2 SPF) TRUSS RAFTERS AT 24" O.C. (MAXIMUM)

RISE  
 RUN

ROOFING MATERIAL PER CUSTOMER

2x4 (#2 SPF) RAFTER TIES AT 6'-0" O.C. (MAXIMUM)

7/16" O.S.B. ROOF SHEATHING ATTACHED W/ 8d NAILS AT 12" O.C. AT FIELD AND 6" O.C. AT EDGES

FASCIA AND SOFFIT TRIM MAY VARY PER STYLE AND CUSTOMER

**VARIABLE DISTANCE**  
 8' WIDE = 8" MAX.  
 10' WIDE = 10" MAX.  
 12' WIDE = 9" MAX.  
 14' WIDE = 7" MAX.

DOUBLE TOP PLATE (2X6 TOP AND 2X4 BOTTOM)

2x4 (#2 SPF) WALL STUDS AT 16" O.C.

7/16" O.S.B. WALL SHEATHING WITH CLADDING PER CUSTOMER ATTACHED W/ 8d NAILS - OR -

P.T. 5/8" (T-1-11) PLYWOOD SIDING PANEL GALV. 1.75"L x 0.09" DIA. COIL NAILS

SHEATHING ATTACHED AT:  
 12" O.C. AT FIELD  
 6" O.C. AT EDGES

STRUCTURE IS NOT DESIGNED AS A HABITABLE SPACE

5/8" T&G SUB FLOOR

P.T. 2x4 (#2 SYP) FLOOR JOIST (AT 8' WIDE & 10' WIDE & 12' WIDE)  
 P.T. 2x6 (#2 SYP) FLOOR JOIST (AT 14' WIDE)  
 AT 16" O.C. (MAXIMUM)

P.T. PERIMETER BAND (MATCH JOIST SIZE)

C.M.U. PILLAR (BEYOND) SOLID BEARING, HEIGHT VARIES PER GRADE (SEE FND. PLAN FOR LOCATIONS)

P.T. 4x6 (#2 SYP) CONT. RUNNERS (SEE FOUNDATION PLAN FOR LOCATIONS) NOTCHED 2" (MAXIMUM) FOR FLR. JOIST

HELICAL ANCHOR (LOAD CAPACITY = 1400# MIN) EMBED 15" MINIMUM (SEE FND. PLAN FOR LOCATIONS) w/ METAL STRAPS LOOPED OVER RUNNERS (ASSUMED 1500 PSI SOIL BEARING)

STRAP MATERIAL SHALL BE 1/8" 7X19 GALVANIZED AIRCRAFT CABLE MBS 2000 LB.



SHED STYLE: **UTILITY & SOUTHERN CLASSIC**

STRUCTURAL ENGINEER:

SHED SIZE: **SEE PLAN**

SCALE: **5/8" = 1'-0"**

DATE: **07.08.19**

DRAWN BY: **DOUG GAITHER**

**P.E. ROBBINS, P.E.**

1777 STATE ROUTE 167  
 VICTORIA, IL 61435  
 PHONE: (309) 879-3258

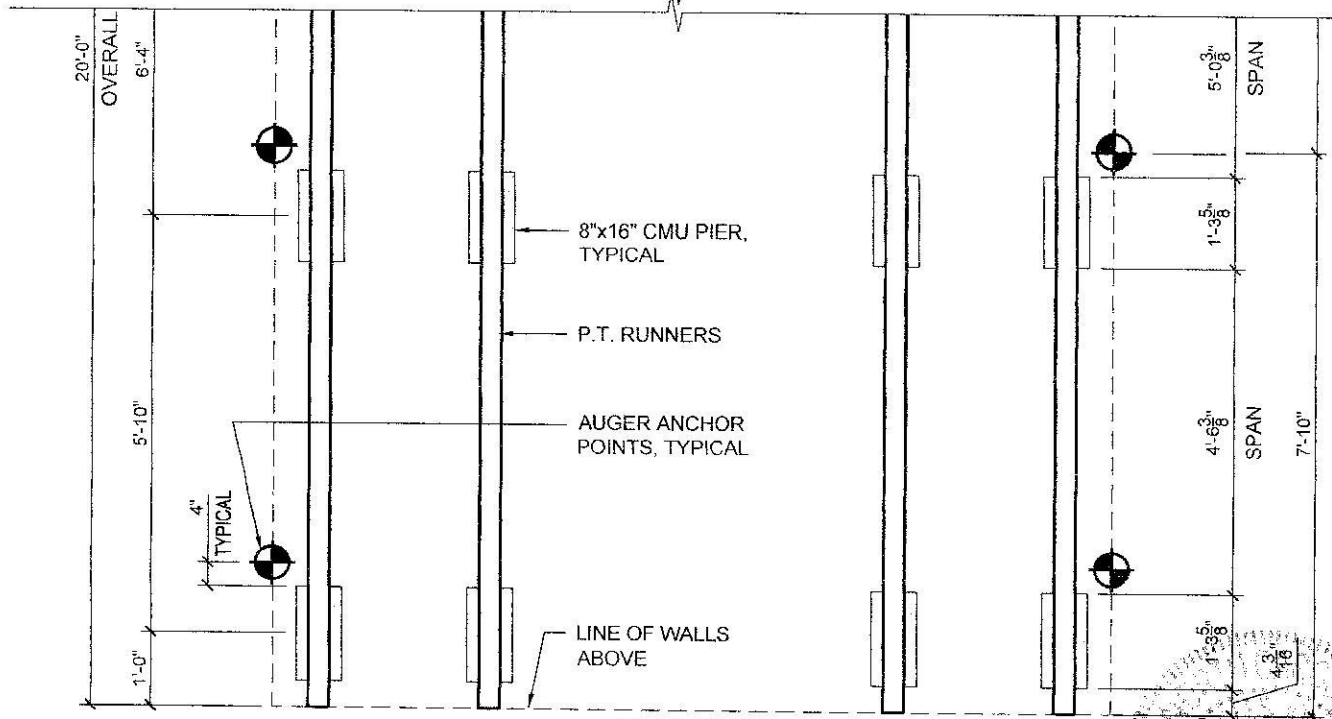
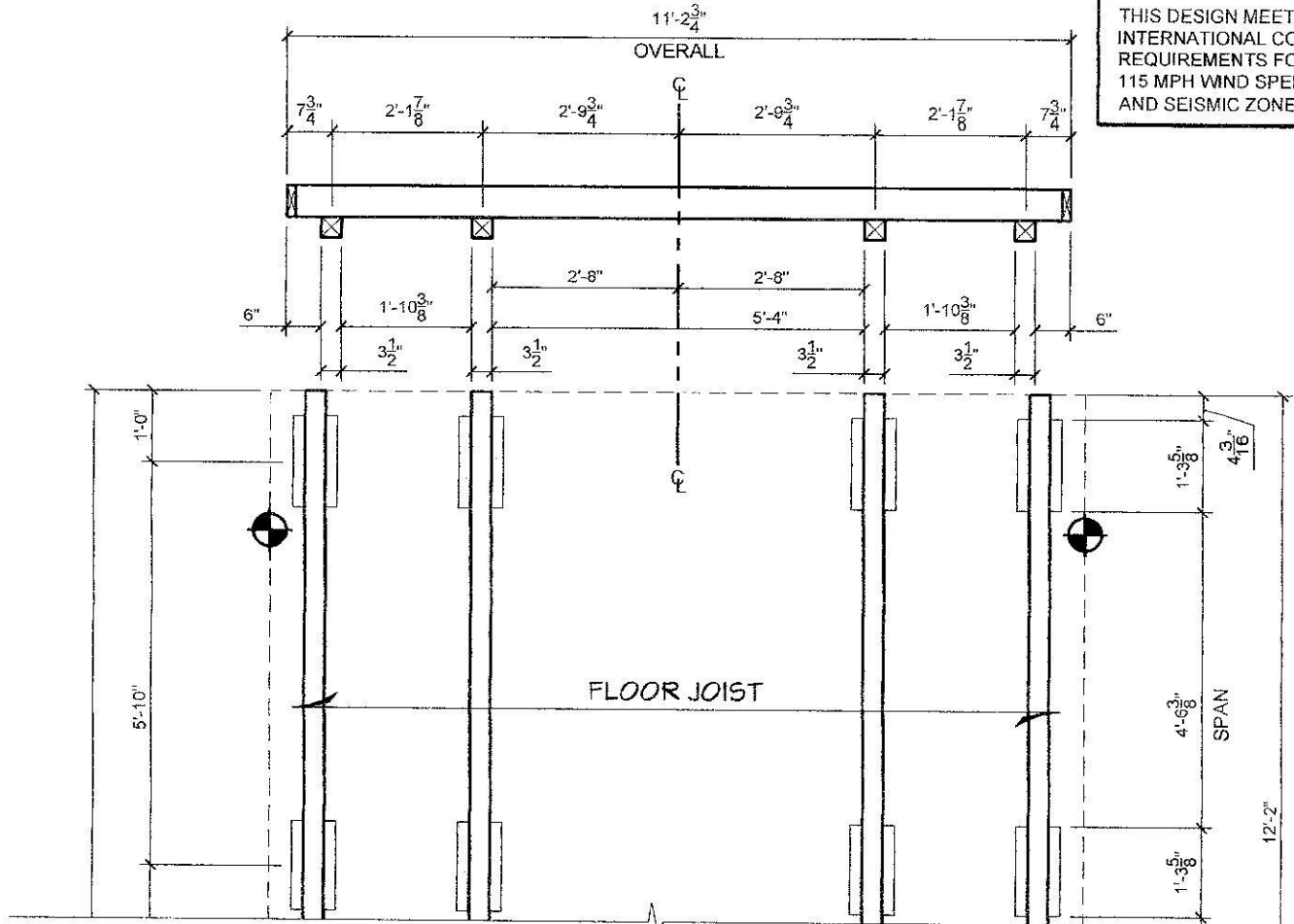
SHEET NAME: **TYPICAL WALL SECTION**

08/13/2019  
 PER191842

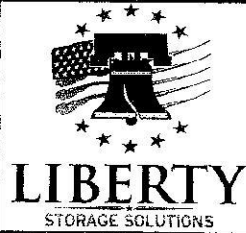
**SECTION VIEW**

**NOTES:**

THIS DESIGN MEETS INTERNATIONAL CODE COUNCIL REQUIREMENTS FOR 115 MPH WIND SPEED (MAXIMUM) AND SEISMIC ZONE D.

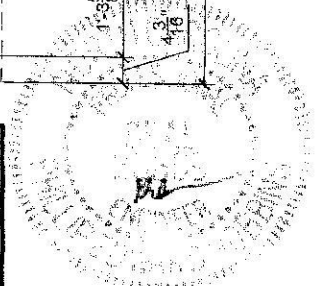


**PLAN VIEW**



SHED STYLE: SEE TYPICAL WALL SECTION	
SHED SIZE: 12x20	SCALE: 3/8" = 1'-0"
DATE: 07.08.19	DRAWN BY: DOUG GAITHER
SHEET NAME: FOUNDATION AND ANCHORING LAYOUT	

STRUCTURAL ENGINEER:  
**P.E. ROBBINS, P.E.**  
1777 STATE ROUTE 167  
VICTORIA, IL 61485  
PHONE: (309) 879-3258



08/13/2019  
PER191842