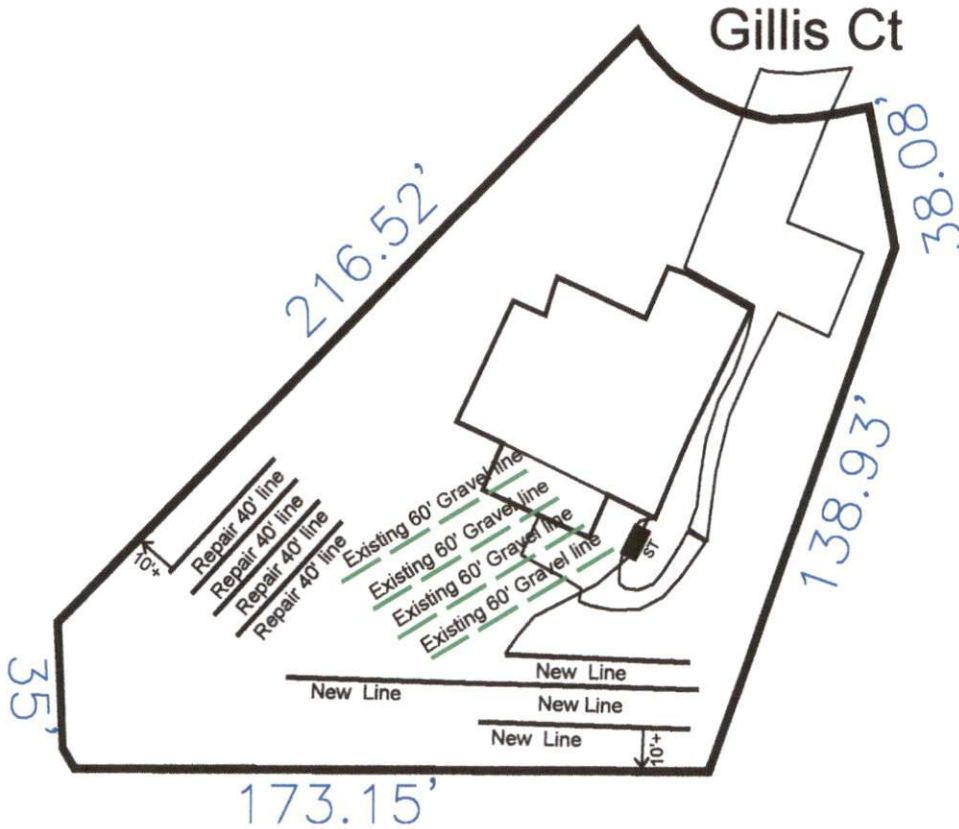


89 Gillis Ct - Harnett County

3-Bedroom Septic Proposal

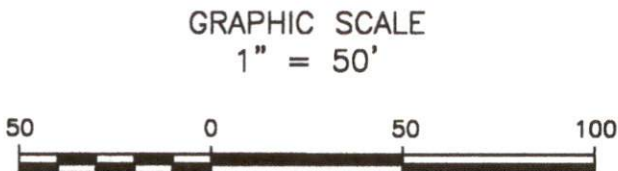
Jerry Pounds



*Do Not Cut, Fill, or Alter Drainfield or Repair Area
 *Comply with all setbacks

*Not a Survey
 (sketched from plot plan taken from public records)

System: Gravity to Serial Dist.
 Lines: (200")
 0.5 LTAR
 32" Max Trench Bottom
 Accepted Status System
 Repair: T&J Panel
 Lines: 3-5 (120')
 0.5 LTAR
 24" Trench Bottom
 50% Reduction System



Adams
 Soil Consulting
 919-414-6761
 Job #1269