



P.E. PEAGUE, P.E., P.L.L.C.
 2705 MADISON CT, #2705
 WASHINGTON, DC 20007



Midtown Designs Inc. 1529 Big Falls Dr. Wendell, NC 27581
 Phone: 919-783-8825 www.midtowndesigns.com

- FOUNDATION STRUCTURAL NOTES**
1. ALL FOUNDATION ELEMENTS SHALL BE CONCRETE ON GRADE.
 2. ALL FOUNDATION ELEMENTS SHALL BE REINFORCED WITH #4 BARS.
 3. ALL FOUNDATION ELEMENTS SHALL BE FINISHED WITH A 2" THICK COURSE OF 1500 PSI CONCRETE.
 4. ALL FOUNDATION ELEMENTS SHALL BE FINISHED WITH A 2" THICK COURSE OF 1500 PSI CONCRETE.
 5. ALL FOUNDATION ELEMENTS SHALL BE FINISHED WITH A 2" THICK COURSE OF 1500 PSI CONCRETE.
 6. ALL FOUNDATION ELEMENTS SHALL BE FINISHED WITH A 2" THICK COURSE OF 1500 PSI CONCRETE.
 7. ALL FOUNDATION ELEMENTS SHALL BE FINISHED WITH A 2" THICK COURSE OF 1500 PSI CONCRETE.
 8. ALL FOUNDATION ELEMENTS SHALL BE FINISHED WITH A 2" THICK COURSE OF 1500 PSI CONCRETE.
 9. ALL FOUNDATION ELEMENTS SHALL BE FINISHED WITH A 2" THICK COURSE OF 1500 PSI CONCRETE.
 10. ALL FOUNDATION ELEMENTS SHALL BE FINISHED WITH A 2" THICK COURSE OF 1500 PSI CONCRETE.

FOUNDATION STRUCTURAL NOTES

1. ALL FOUNDATION ELEMENTS SHALL BE CONCRETE ON GRADE.

2. ALL FOUNDATION ELEMENTS SHALL BE REINFORCED WITH #4 BARS.

3. ALL FOUNDATION ELEMENTS SHALL BE FINISHED WITH A 2" THICK COURSE OF 1500 PSI CONCRETE.

4. ALL FOUNDATION ELEMENTS SHALL BE FINISHED WITH A 2" THICK COURSE OF 1500 PSI CONCRETE.

5. ALL FOUNDATION ELEMENTS SHALL BE FINISHED WITH A 2" THICK COURSE OF 1500 PSI CONCRETE.

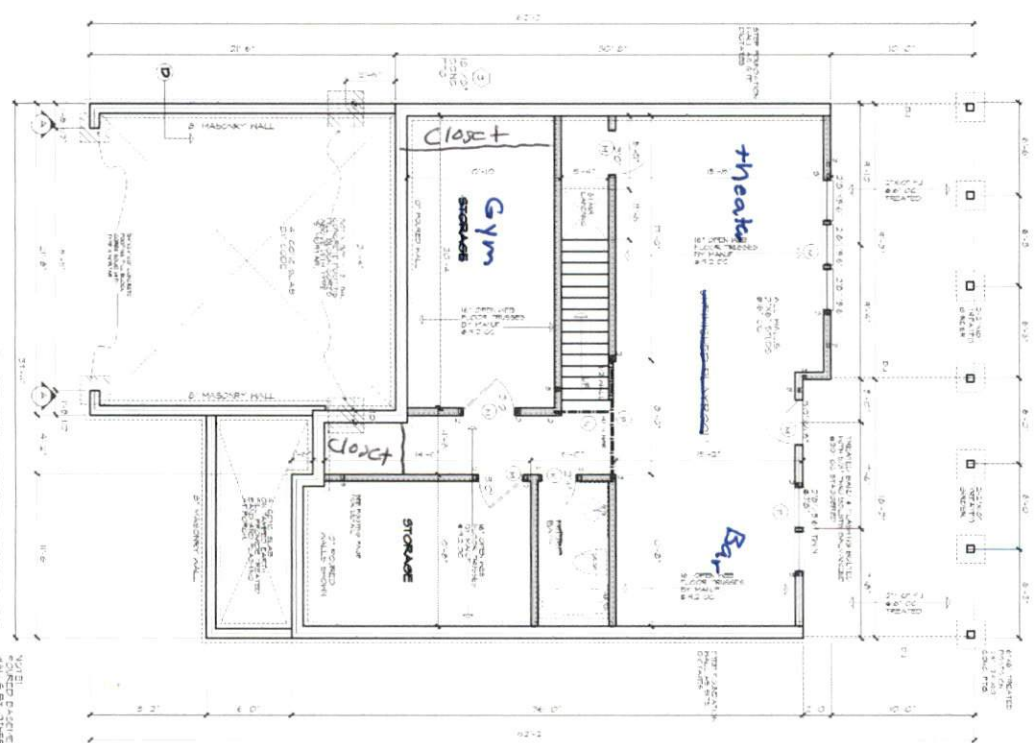
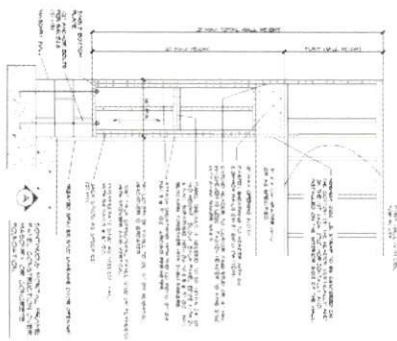
6. ALL FOUNDATION ELEMENTS SHALL BE FINISHED WITH A 2" THICK COURSE OF 1500 PSI CONCRETE.

7. ALL FOUNDATION ELEMENTS SHALL BE FINISHED WITH A 2" THICK COURSE OF 1500 PSI CONCRETE.

8. ALL FOUNDATION ELEMENTS SHALL BE FINISHED WITH A 2" THICK COURSE OF 1500 PSI CONCRETE.

9. ALL FOUNDATION ELEMENTS SHALL BE FINISHED WITH A 2" THICK COURSE OF 1500 PSI CONCRETE.

10. ALL FOUNDATION ELEMENTS SHALL BE FINISHED WITH A 2" THICK COURSE OF 1500 PSI CONCRETE.



BASMENT / FOUNDATION PLAN
 15.11.18 (REV. 11.18)

DATE: 11.11.18
 DRAWN BY: JWB

PROJECT: 202508

Carl Welch
 Signature Series

O'Shea Residence