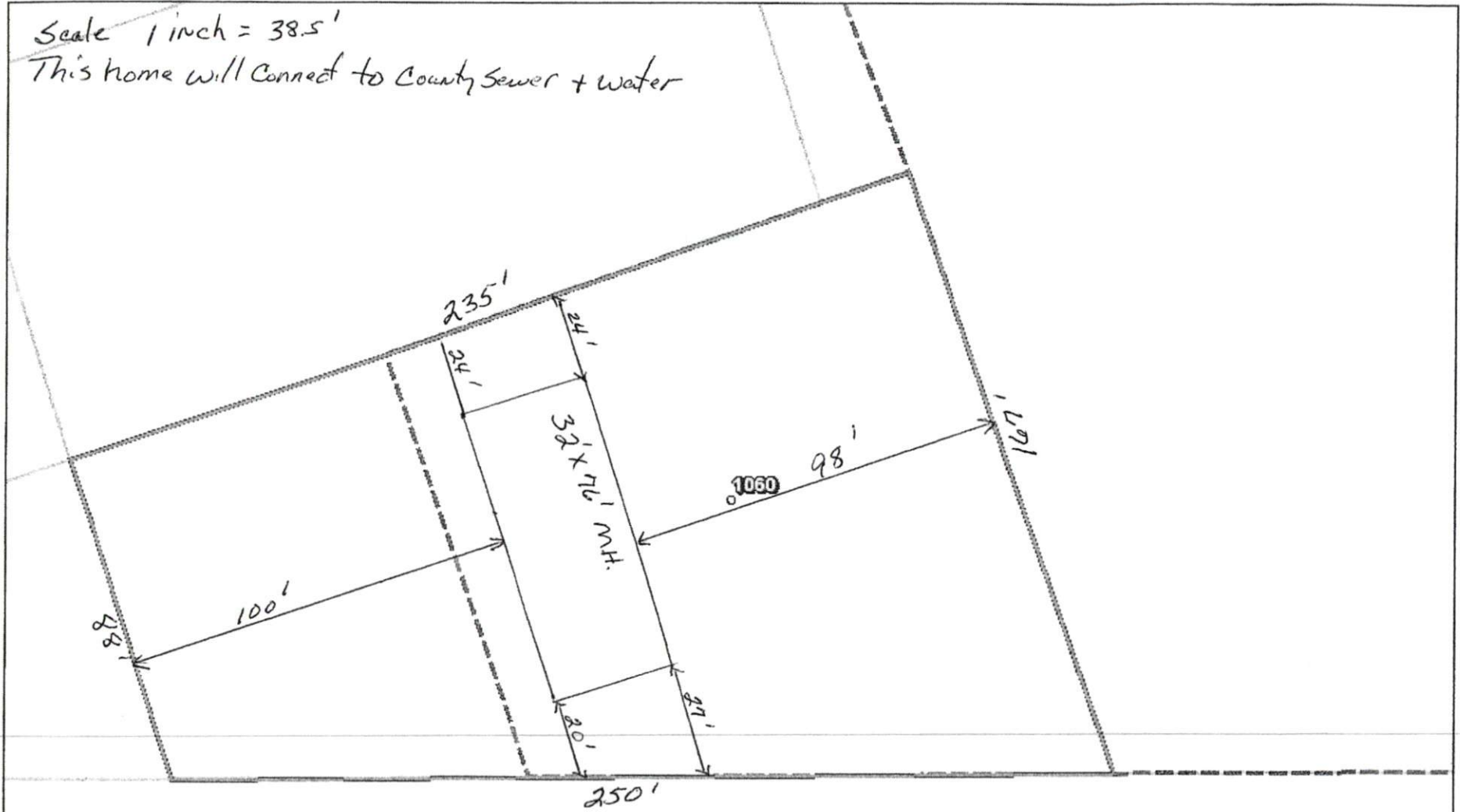


Harnett GIS

NOT FOR LEGAL USE

Scale 1 inch = 38.5'
 This home will connect to County Sewer + Water



Harnett County GIS, Harnett County Public Utilities



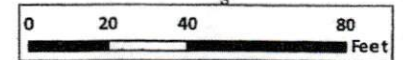
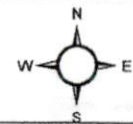
GIS/E-911 Addressing
 July 23, 2021

Search Results: Parcels

- Override 1
- Recycle Center
- Landfills
- Surrounding County Boundaries

- Federal Property
- City Limits
- Harnett County Boundary
- Address Numbers
- Airport

- Major Roads
- Interstate
 - NC
 - US
 - Roads



1 inch = 47 feet