

1264 SQ.FT. (STD PLAN "CONDITIONED")
 SQ.FT. (W/OPT. PORCH/RECESS "CONDITIONED")

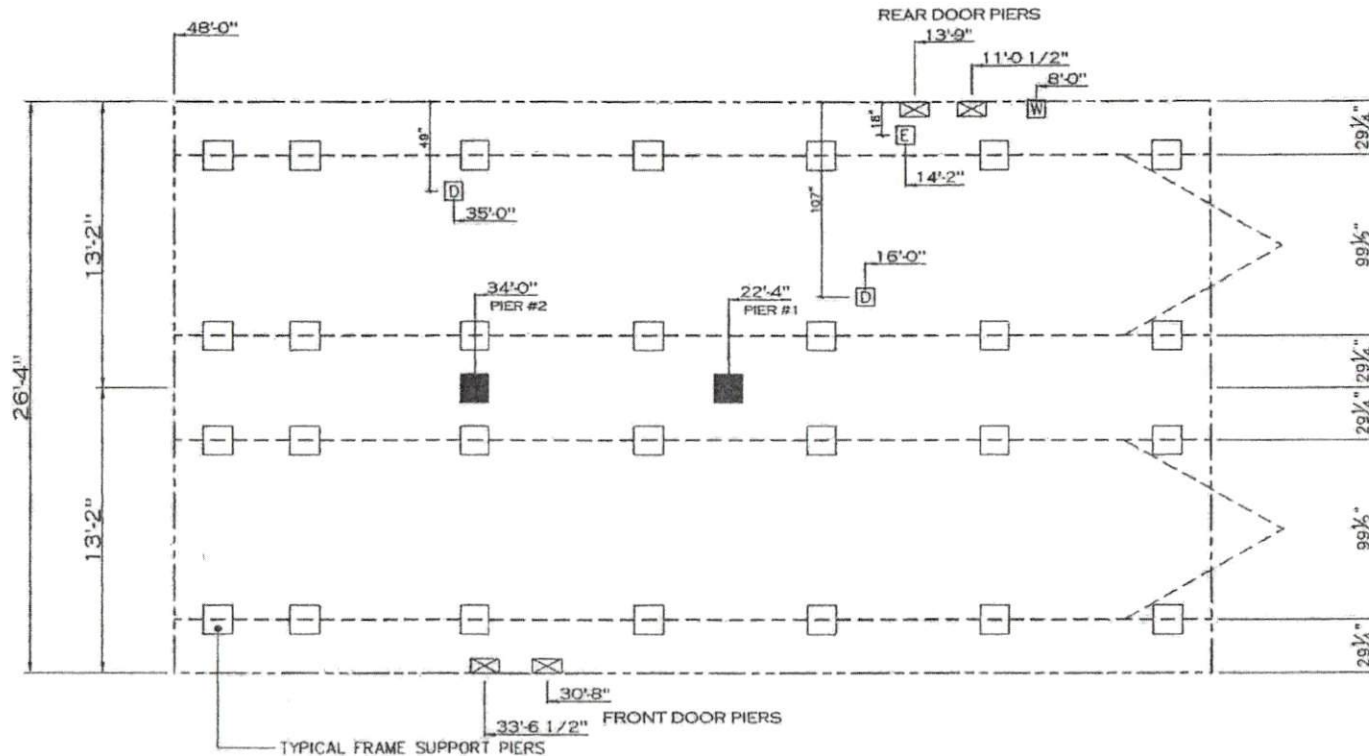
	Drawing #: 21M097
Product Designer:	28' x 48'
FLOOR PLAN	

20 lb ROOF LOAD SIDEWALL OPENING PIER LOAD 28' BOX WIDTH	SIDEWALL OPENING (FT) REQUIRED PIER LOAD (LBS)					
	3	4	5	6	8	10
	1175	1330	1485	1640	1950	2260

*FOR 30 lb & 40 lb ROOF LOAD REFER TO TABLES 7b & 7c IN THE INSTALLATION MANUAL.

20 psf Roof Live Load		
Column Pier #	Distance from Hitch	Pier Load (lbs)
1	22.33	2705
2	34	2705

30 psf Roof Live Load		
Column Pier #	Distance from Hitch	Pier Load (lbs)
1	22.33	4526
2	34	4526

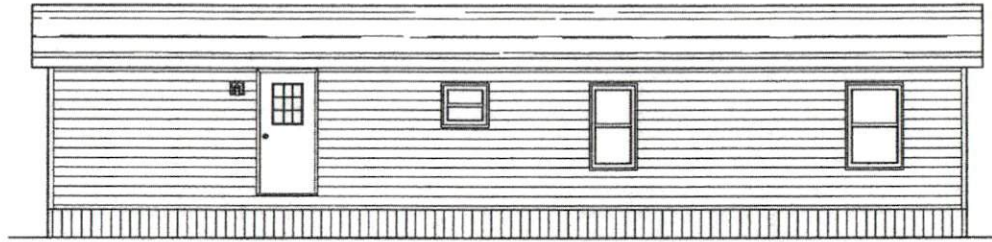


GENERAL NOTES:

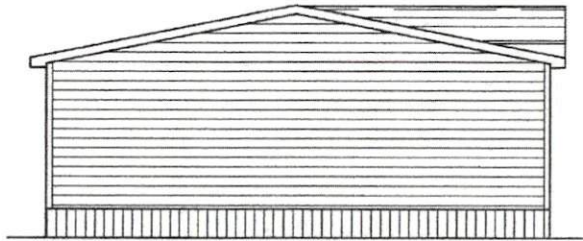
- PIER LOADS SHOWN ARE TO BE USED TO SIZE THE FOOTINGS BELOW THE MARRIAGEWALL FOR COLUMN SUPPORT PIERS. REFER TO TABLES 6b AND 6c IN THE INSTALLATION MANUAL FOR LOAD ON FRAME PIER FOOTINGS FOR HOMES THAT DO NOT REQUIRE PERIMETER BLOCKING. REFER TO TABLES 7b AND 7c IN THE INSTALLATION MANUAL FOR LOAD ON FRAME PIER FOOTINGS THAT REQUIRE PERIMETER BLOCKING. REFER TO TABLES 10 AND 10a TO DETERMINE FOOTING SIZE FOR ALL PIERS.
- REFER TO TABLE 9 FOR PIER CONFIGURATION AND MAXIMUM ALLOWABLE HEIGHTS. CROSS REFERENCE THE PIER HEIGHT WITH THE MAXIMUM ALLOWABLE FLOOR HEIGHT LISTED IN THE FRAME TIEDOWN CHARTS (TABLE 18, 19, AND 20).
- FLOOR WIDTH SHOWN IS FOR STANDARD PRODUCT ONLY. CONTACT THE MFG PLANT FOR SPECIFICATIONS OF OPTIONS ORDERED.
- SERVICE DROP LOCATIONS IDENTIFIED ARE APPROXIMATE.
- THE MAXIMUM SPACING FOR FRAME SUPPORT PIERS FOR 8" I-BEAMS IS 8 FEET, 10" & 12" I-BEAMS ARE 10 FEET.

PIER LEGEND	
□	= SUPPORT UNDER MATING OPENING
■	= SUPPORT AT MATING COLUMN
⊗	= SUPPORT UNDER MATING WALL
■	= PIER PORCH/RECESSED ENTRY
□	= PIER MAIN BEAM
○	= PIER PERIMETER
●	= TIE-DOWN SUPPORT (QTY PER TAB. N, SEE DETAIL D-8 IN FOUND. PKG.)

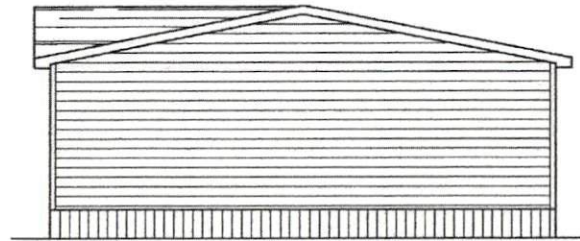
SERVICE DROP LEGEND	
E	= ELECTRICAL DROP
W	= WATER INLET
D	= DWV PLUMBING DROP
G	= GAS INLET



REAR ELEVATION



LEFT ELEVATION



RIGHT ELEVATION

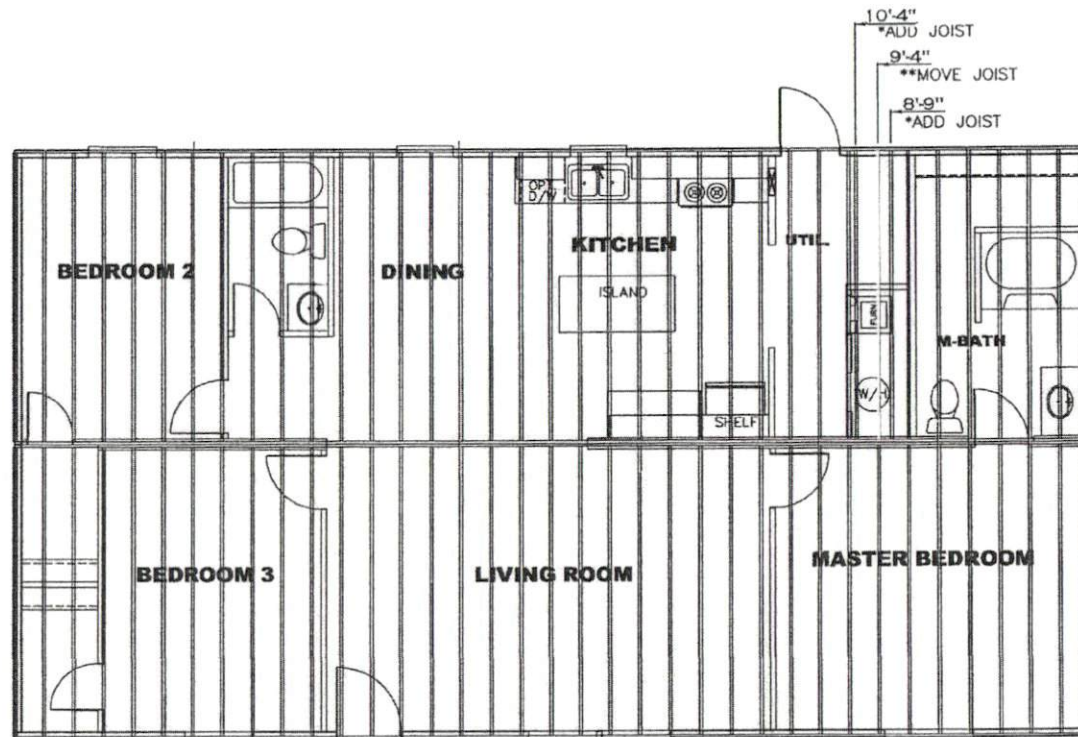


FRONT ELEVATION

1264 SQ.FT. (STD PLAN "CONDITIONED")
 N/A SQ.FT. (W/OPT. PORCH/RECESS "CONDITIONED")

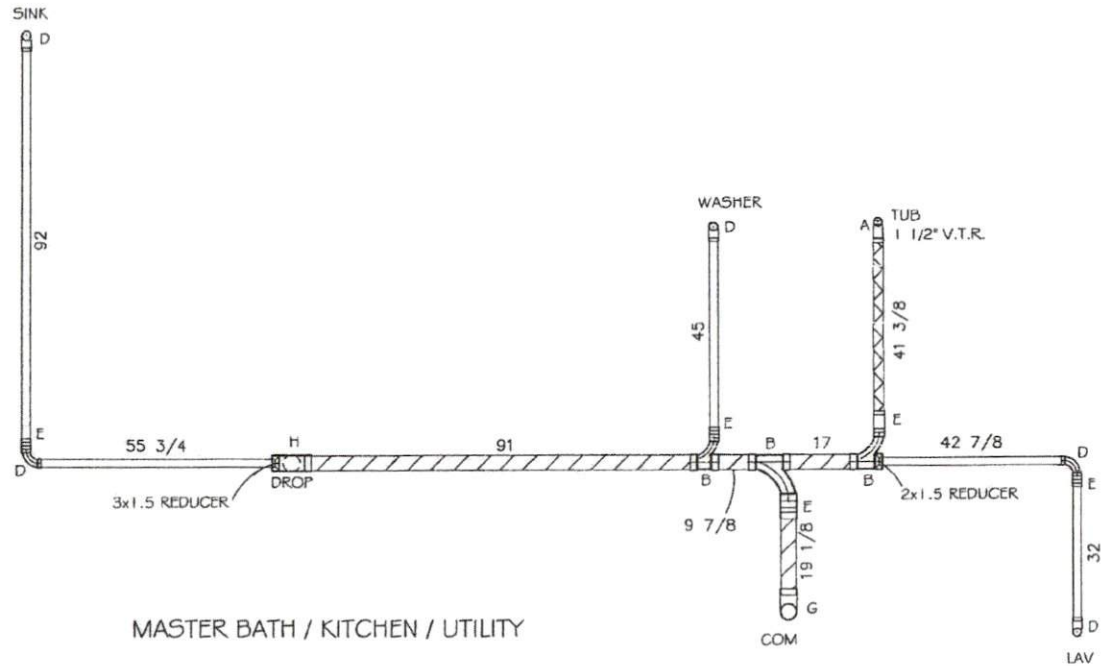
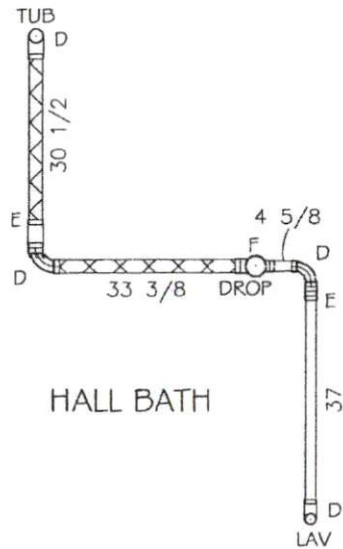
	Date: 3.16.15	Scale: N.T.S.
Product Designer: HUITINGJ	28' x 48'	
elevation	REV:	

12



1264 SQ.FT. (STD PLAN "CONDITIONED")
 SQ.FT. (W/OPT. PORCH/RECESS "CONDITIONED")

Product Designer:	Dates: 1-6-15	Scale: NTS	21MO97
FLOOR JOIST DETAIL			



PIPE SIZES
3"
2"
1 1/2"

PARTS LEGEND

A SANITARY TEE (T-Y)	B LONG TURN (T-Y)	C ~4 BEND	G 4x3 CLOSET ELBOW	H DOUBLE ELL	I 22~2 ELL	
D LONG TURN ~4 BEND	E 45° ELL	F DOUBLE SANITARY TEE	J 45° Y	K LONG TURN STREET ELBOW	L 45° FTG ELBOW	M DOUBLE LTTY

1264 SQ.FT. (STD PLAN "CONDITIONED")
SQ.FT. (W/OPT. PORCH/RECESS "CONDITIONED")

Date: 3-16-15	Scale: NTS	21MO97
Product Designer:	28' x 48'	
2-D DRAIN DETAIL		

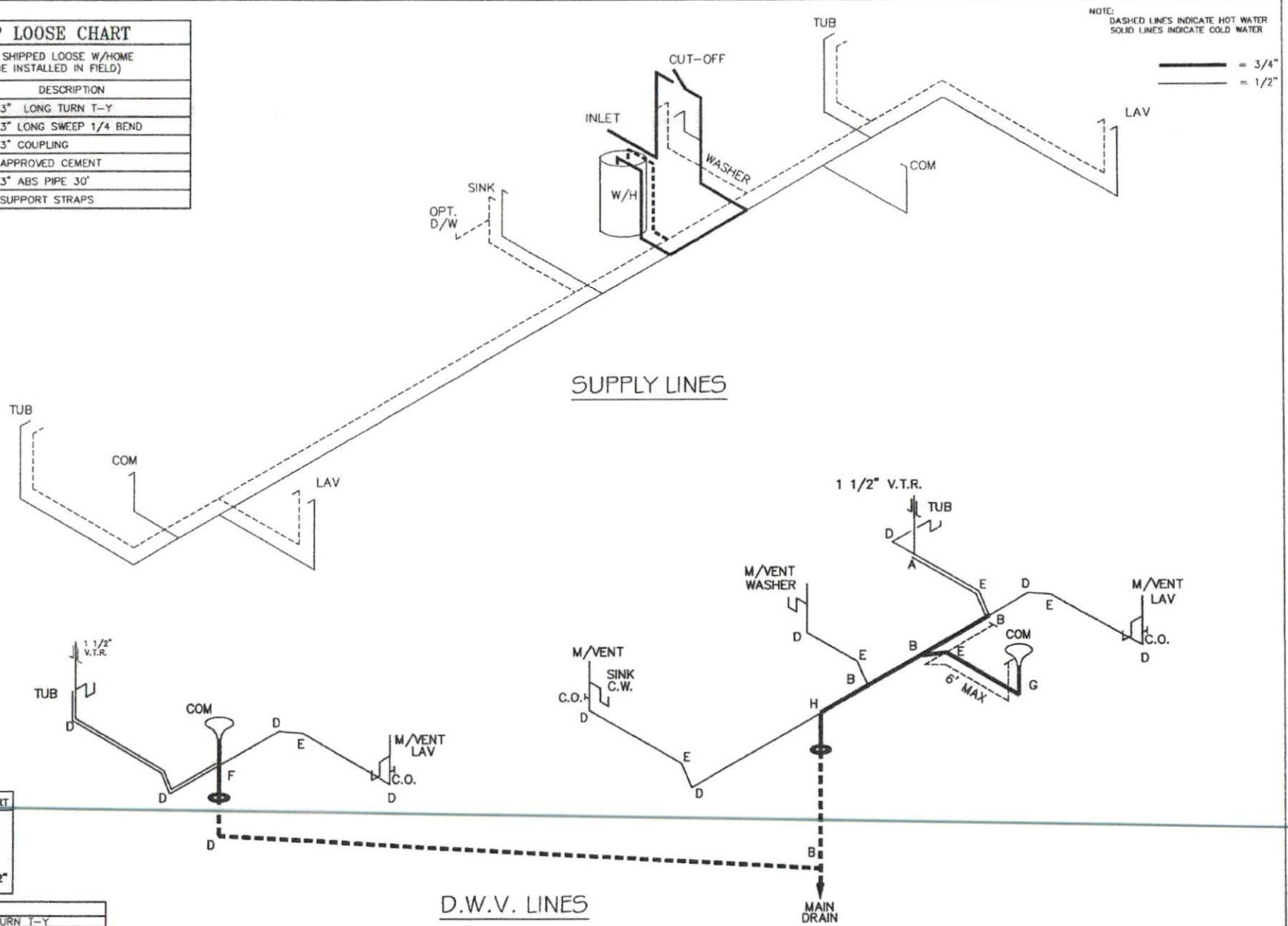
SHIP LOOSE CHART

PARTS SHIPPED LOOSE W/HOME
(TO BE INSTALLED IN FIELD)

QUANTITY	DESCRIPTION
1	ⓑ 3" LONG TURN T-Y
1	ⓓ 3" LONG SWEEP 1/4 BEND
1	3" COUPLING
1	APPROVED CEMENT
	3" ABS PIPE 30'
varies	SUPPORT STRAPS

NOTE:
DASHED LINES INDICATE HOT WATER
SOLID LINES INDICATE COLD WATER

— = 3/4"
— = 1/2"



DWV LINE SIZE CHART

—	= 3"
—	= 2"
—	= 1 1/2"

LEGEND

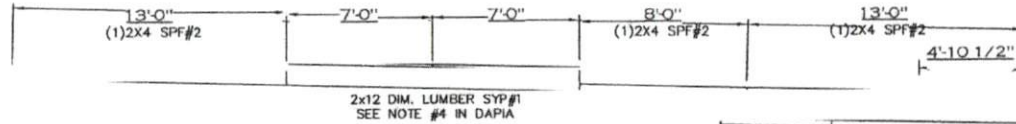
A	SHORT TURN T-Y
B	LONG TURN T-Y
C	1/4 BEND
D	LONG SWEEP 1/4 BEND
E	45 ELL
F	DBL. SANITARY TEE
G	4x3 CLOSET ELL
H	DOUBLE ELL
I	22 1/2° ELL
J	45° Y
K	LONG TURN STREET ELBOW
L	45 FTG ELL

D.W.V. LINES

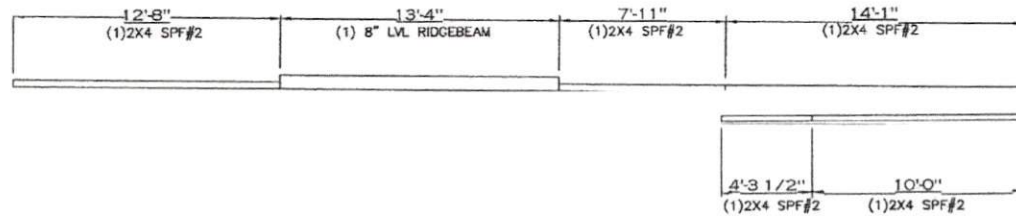
1254 SQ.FT. (STD PLAN "CONDITIONED")
SQ.FT. (W/OPT. PORCH/RECESS "CONDITIONED")

Product Designer:	28' x 48' Money	Date: 3-16-15	Scale: NTS	21MO97
D.W.V. and Supply Lines				

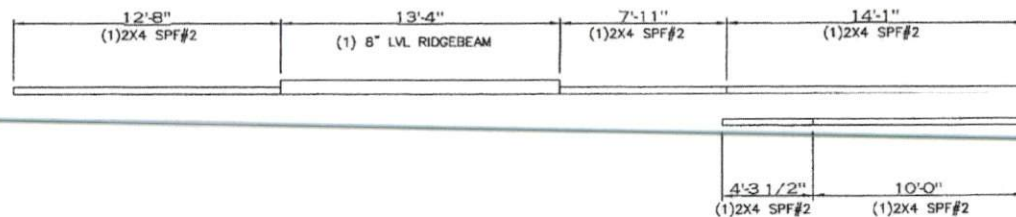
A-HALF RIDGEBEAM



WIND ZONE 1 & 2
20 LB. ROOF LOAD
24" O.C. TRUSS
HITCH END
A-HALF



WIND ZONE 3
20 LB. ROOF LOAD
18" O.C. TRUSS
HITCH END
A-HALF



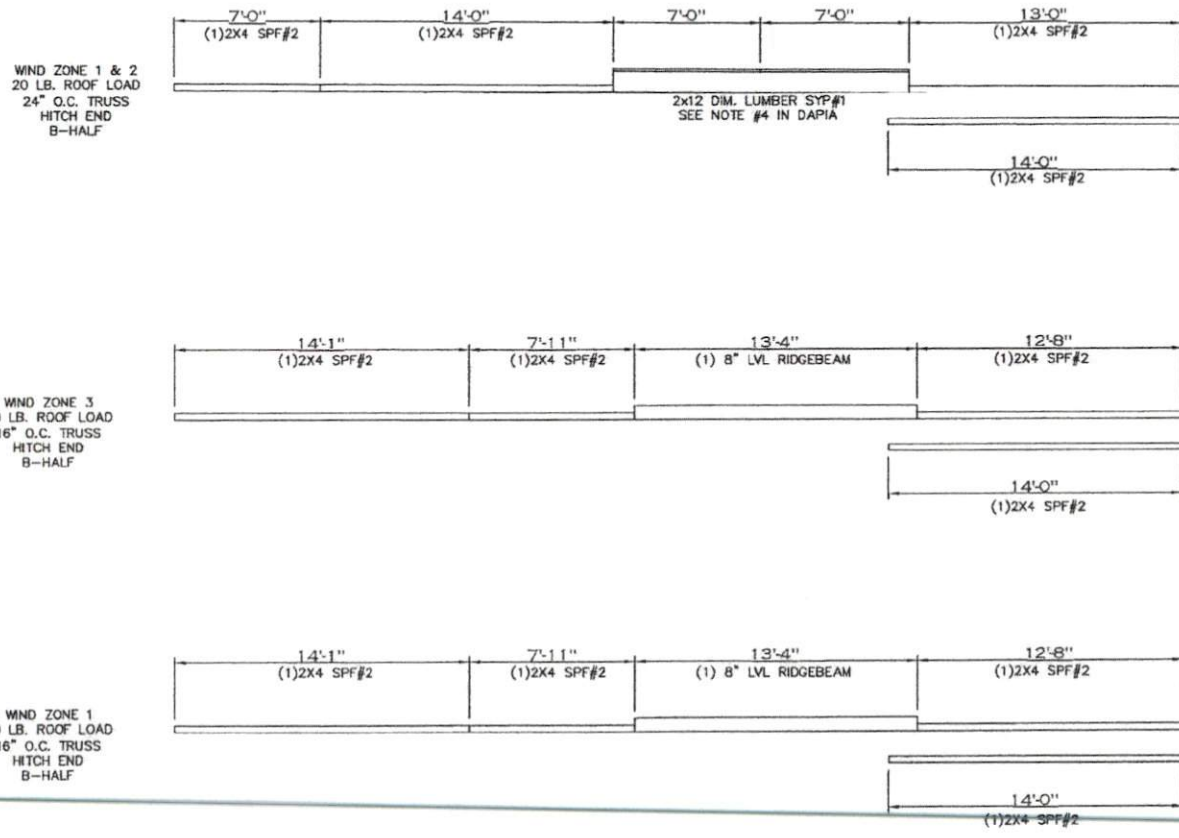
WIND ZONE 1
30 LB. ROOF LOAD
16" O.C. TRUSS
HITCH END
A-HALF

GEN. NOTES:

- FLOOR WIDTH = 158"
- R-BEAM THICKNESS = 1 1/2" DIM LUMBER (M-RC-17K & 17KB)
- M-WALL HEIGHT = 7'-0" - 8'-6"
- M-WALL STUD SIZE = 2" x 3"

1264 SQ.FT. (STD PLAN "CONDITIONED")		Drawing #	
N/A SQ.FT. (W/OPT. PORCH/RECESS "CONDITIONED")		21M097	
Product Designer: HURTINGJ	Date: 10-15	Scale: N.T.S.	21M097
A-HALF RIDGEBEAM		20' x 40'	

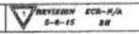
B-HALF RIDGEBEAM

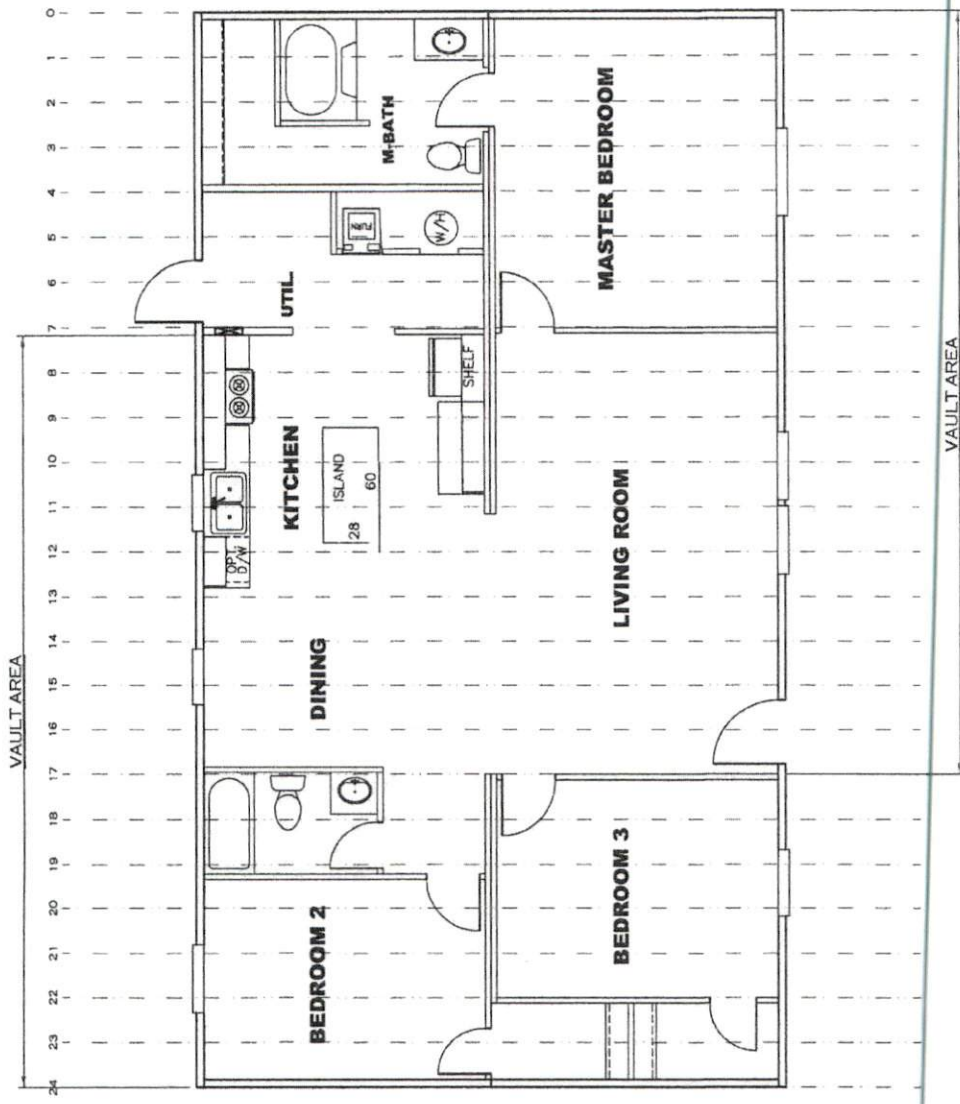


GEN. NOTES:

FLOOR WIDTH = 158"
 R-BEAM THICKNESS = 1 1/2" DIM LUMBER (M-RC-17K & 17KB)
 M-WALL HEIGHT = 7'-0" - 8'-6"
 M-WALL STUD SIZE = 2" x 3"

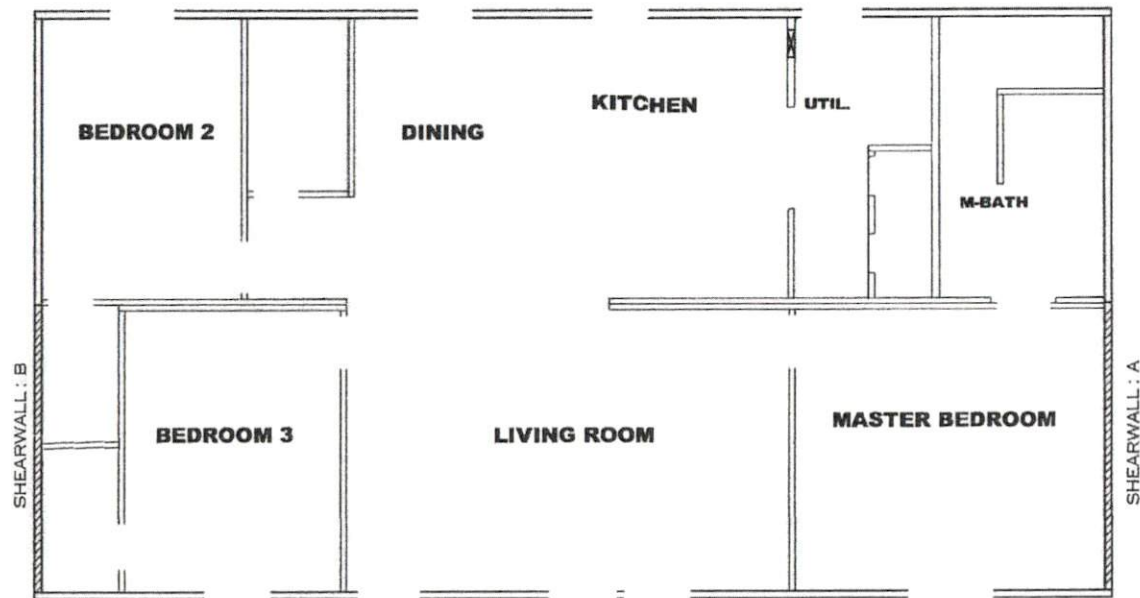
1264 SQ. FT. (STD PLAN "CONDITIONED")	
N/A SQ. FT. (W/OPT. PORCH/RECESS "CONDITIONED")	
Date: 10-13	Scale:
NTS	21M097
Product Group: HURING	20' x 40'
B-HALF RIDGEBEAM	





1264 SQ.FT. (STD PLAN "CONDITIONED")
 SQ.FT. (W/OPT. PORCH/RECESS "CONDITIONED")

Date: 3-16-15	Scale: NTS	2 JMO97
Product Designer		
28' x 48'		



Model # 36m075 Minimum Joist Spacing 16"
 Box Width = 158" Double wide No Offset Box
 Box Length = 48 ft. 99.5" 10" MIN IBEAM No Clerestory
 No Skylights No Origami Dormer
 No Porches No Sunken Floor
 Joist Size = #2 spt 2x6 Lags 9Mx3" No Parapet Roof

Version R13.6a

Wind Zone 1 Standard Roof		(3/8" sheathing only with 15 gax 1.5" at 5'10" oc (197 plf) Chords: 2x4 stud spt w/2x4 MCP & 1x4 spt w/2x4 MCP		84 inch sidewall		
Shearwall	Dist / Hitch	Length	PLF	# of Joists	Lags	Notes
A	0'	96"	162	2	1/1	
B	48'	96"	162	2	1/1	
Wind Zone 2 Standard Roof		(3/8" sheathing only with 15 gax 1.5" at 5'10" oc (197 plf) Chords: 2x4 stud spt w/2x4 MCP & 1x4 spt w/2x4 MCP		84 inch sidewall		
Shearwall	Dist / Hitch	Length	PLF	# of Joists	Lags	Notes
A	0'	124"	324	2	3/2	
B	48'	124"	324	2	3/2	
Wind Zone 3 Standard Roof		(3/8" sheathing only with 15 gax 1.5" at 5'10" oc (197 plf) Chords: 2x4 stud spt w/2x4 MCP & 1x4 spt w/2x4 MCP		84 inch sidewall		
Shearwall	Dist / Hitch	Length	PLF	# of Joists	Lags	Notes
A	0'	Full	324	2	2/2	
B	48'	Full	324	2	2/2	

1264 SQ.FT. (STD PLAN "CONDITIONED")
 SQ.FT. (W/OPT. PORCH/RECESS "CONDITIONED")

Date: 3-16-15	Scale: NTS	21M097
Product Designer:	28' x 48'	
SHEARWALL PAGE		