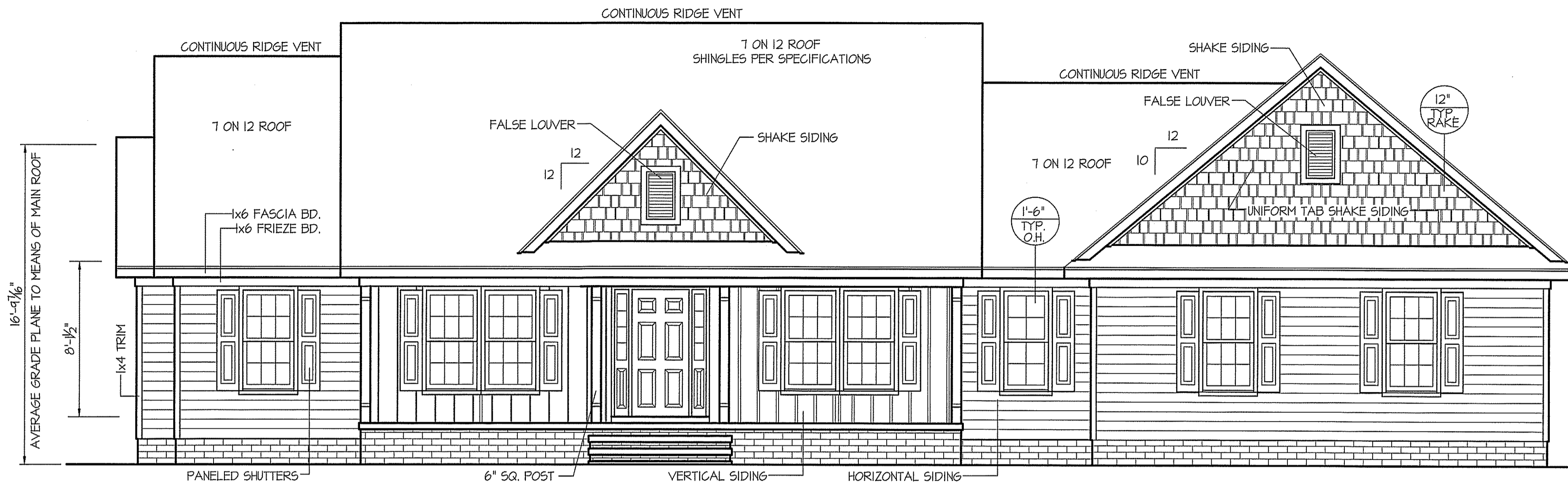


THIS PLAN IS DESIGNED TO MEET THE REQUIREMENTS OF THE NORTH CAROLINA RESIDENTIAL CODE 2018 EDITION

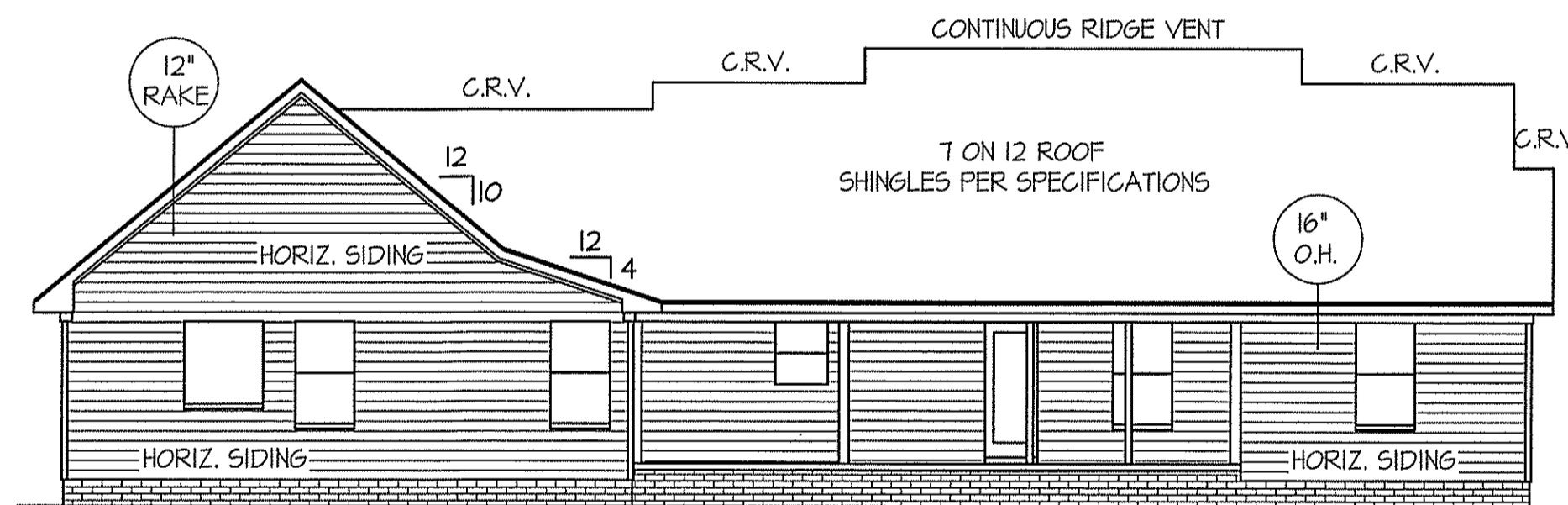


FRONT ELEVATION
SCALE: 1/4" = 1'-0"

WIND ZONES (PER TABLE R301.2(4))

COUNTY	MPH
HARNETT	120
JOHNSTON	120
SAMPSON	130
WAKE	115

ALL EXTERIOR WALLS TO BE SHEATHED WITH CS-WSP (7/16" OSB) IN ACCORDANCE WITH SECTION R602.10.3 UNLESS OTHERWISE NOTED.



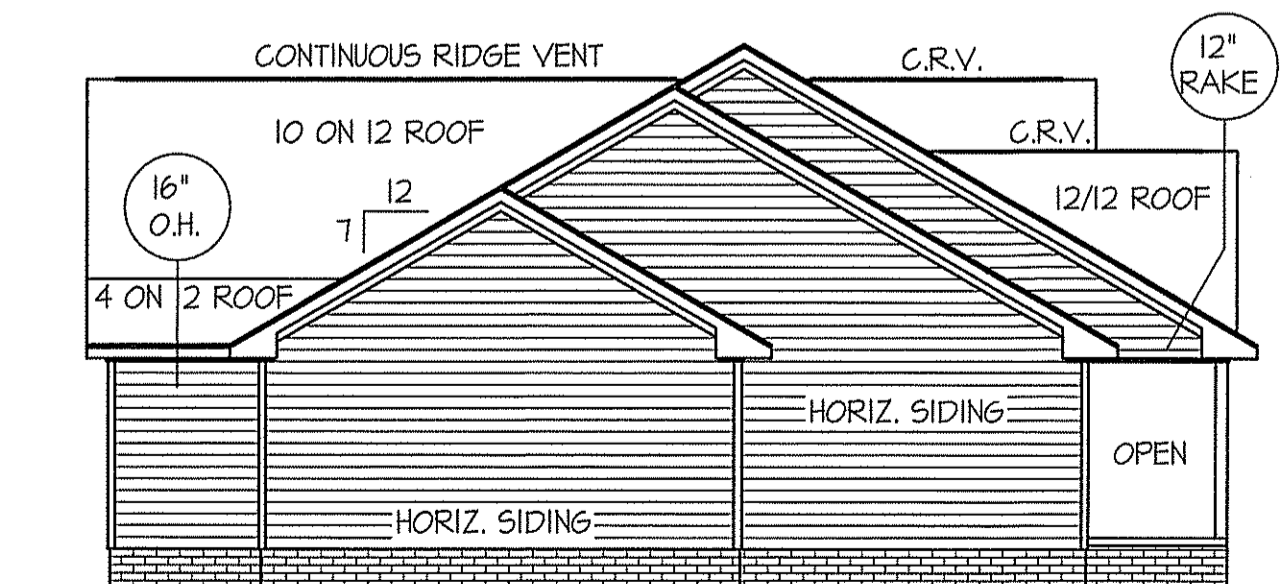
REAR ELEVATION
SCALE: 1/8" = 1'-0"

INSULATION and FENESTRATION REQUIREMENTS

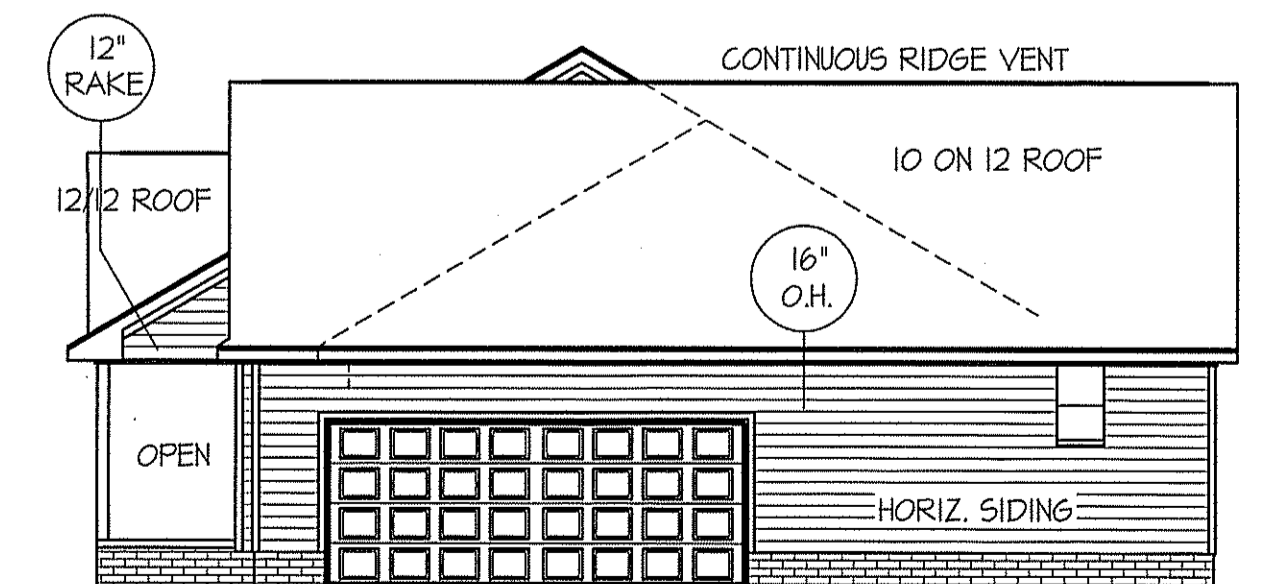
CLIMATE ZONE	ZONE-3	ZONE-4
FENESTRATION U-FACTOR	0.35	0.35
GLAZED FENESTRATION SHGC	0.30	0.30
MINIMUM CEILING R-VALUE	R-38	R-38
MINIMUM WALL R-VALUE	R-15, I3+2.5	R-15, I3+2.5
MINIMUM FLOOR R-VALUE	R-19	R-19
MIN. CRAWL SPACE WALL R-VALUE	5/13	10/15
MIN. SLAB R-VALUE	0	R-10

PROVIDE STEPS AS REQUIRED
GRADE MAY VARY - BUILDER TO VERIFY

ROOF VENTILATION REQ'MTS.
2902 ATTIC SQ. FT. / 300 = 9.68
PROVIDED ON PLAN
109 L.F. RIDGE VENT = 20.43
144 L.F. SOFFIT VENT = 9.0
TOTAL = 29.43 S.F. FREE NET AREA



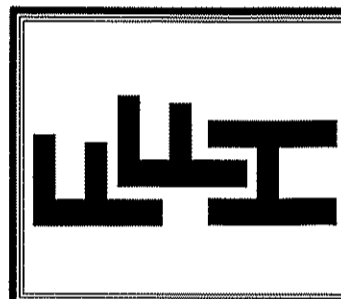
LEFT ELEVATION
SCALE: 1/8" = 1'-0"



RIGHT ELEVATION
SCALE: 1/8" = 1'-0"

DATE:
JANUARY 19, 2023

FREEDOM FAMILY HOMES
P.O. BOX 608
DUNN, N.C. - 28335
O: (910) 892-1231 FAX: (910) 892-5680
© 2023, FREEDOM FAMILY HOMES



EXCLUSIVE PLAN FOR
FREEDOM FAMILY HOMES
Campbell-Thomas

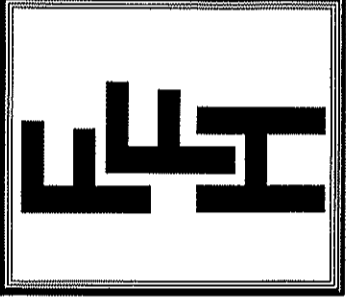
PLAN:

SHEET NO.

1

DATE:
JANUARY 19, 2023

FREEDOM FAMILY HOMES
P.O. BOX 608
DUNN, N.C. - 28335
O: (910) 892-1231 FAX: (910) 892-5680
© 2023, FREEDOM FAMILY HOMES

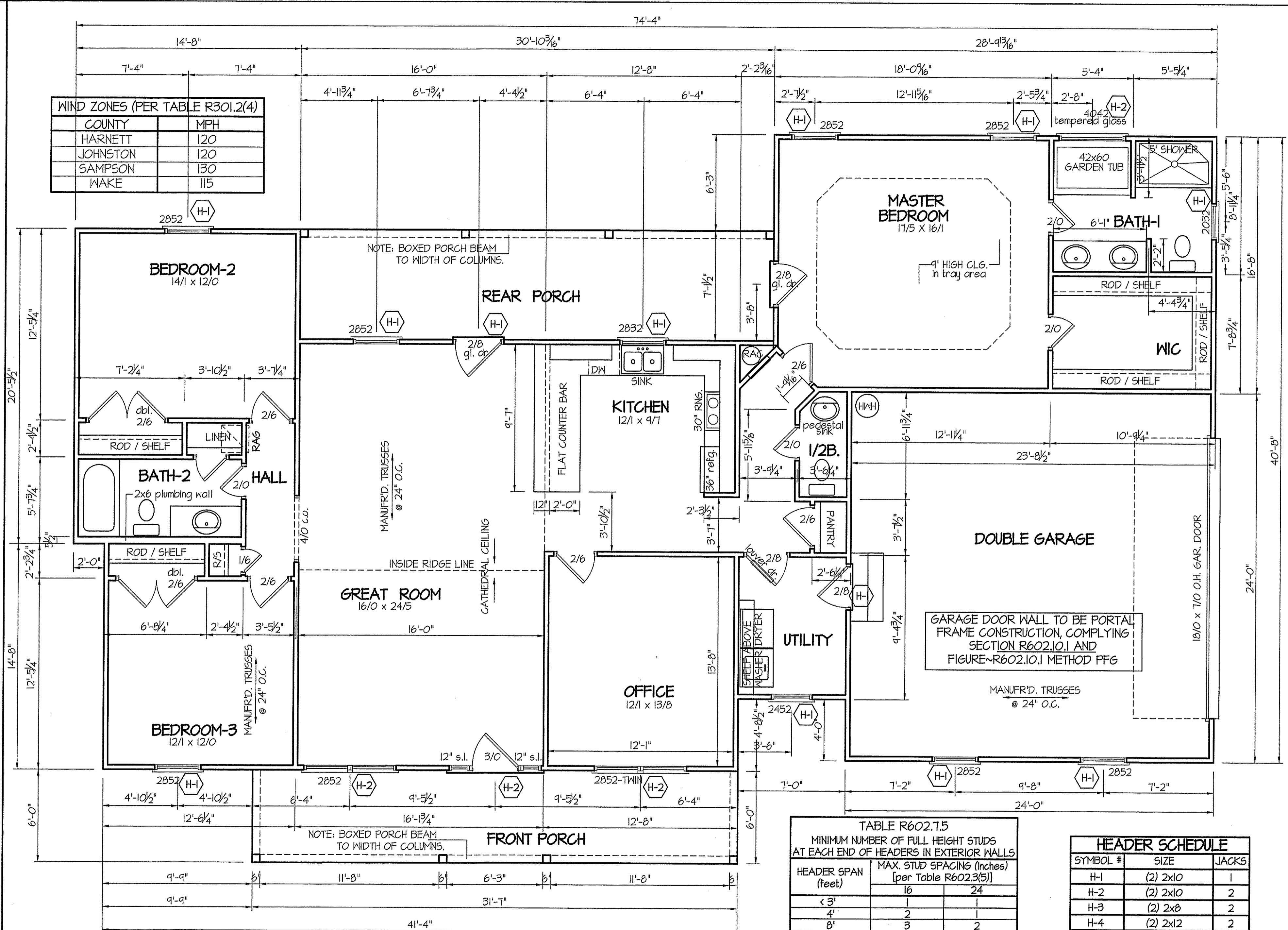


EXCLUSIVE PLAN FOR
FREEDOM FAMILY HOMES
Campbell-Thomas

SHEET NO.
2

WIND ZONES (PER TABLE R301.2(4))

COUNTY	MPH
HARNETT	120
JOHNSTON	120
SAMPSON	130
WAKE	115



COMPUTER FILE: Campbell-Thomas ~ JANUARY 2023

SECTION R407-COLUMNS
R407.3 STRUCTURAL REQUIREMENTS.
THE COLUMNS SHALL BE RESTRAINED TO PREVENT LATERAL DISPLACEMENT AT THE TOP AND BOTTOM END. WOOD COLUMNS SHALL BE NOT LESS IN NOMINAL SIZE THAN 4 INCHES BY 4 INCHES (102 mm BY 102 mm). STEEL COLUMNS SHALL BE NOT LESS THAN 3-INCH-DIAMETER (76 mm) SCHEDULE 40 PIPE MANUFACTURED IN ACCORDANCE WITH ASTM A53 GRADE B OR APPROVED EQUIVALENT.

ALL INTERIOR AND EXTERIOR LOAD BEARING HEADERS WILL BE 2X10 #2 SPF UNLESS OTHERWISE NOTED.

TYP. 8' CEILINGS
FLOOR PLAN
SCALE: 1/4" = 1'-0"
1922 S.F. (HEATED-FRAME)
190 S.F. (FRONT PORCH)
220 S.F. (REAR PORCH)
570 S.F. (DBL. GARAGE)

TABLE R602.7.5
MINIMUM NUMBER OF FULL HEIGHT STUDS AT EACH END OF HEADERS IN EXTERIOR WALLS

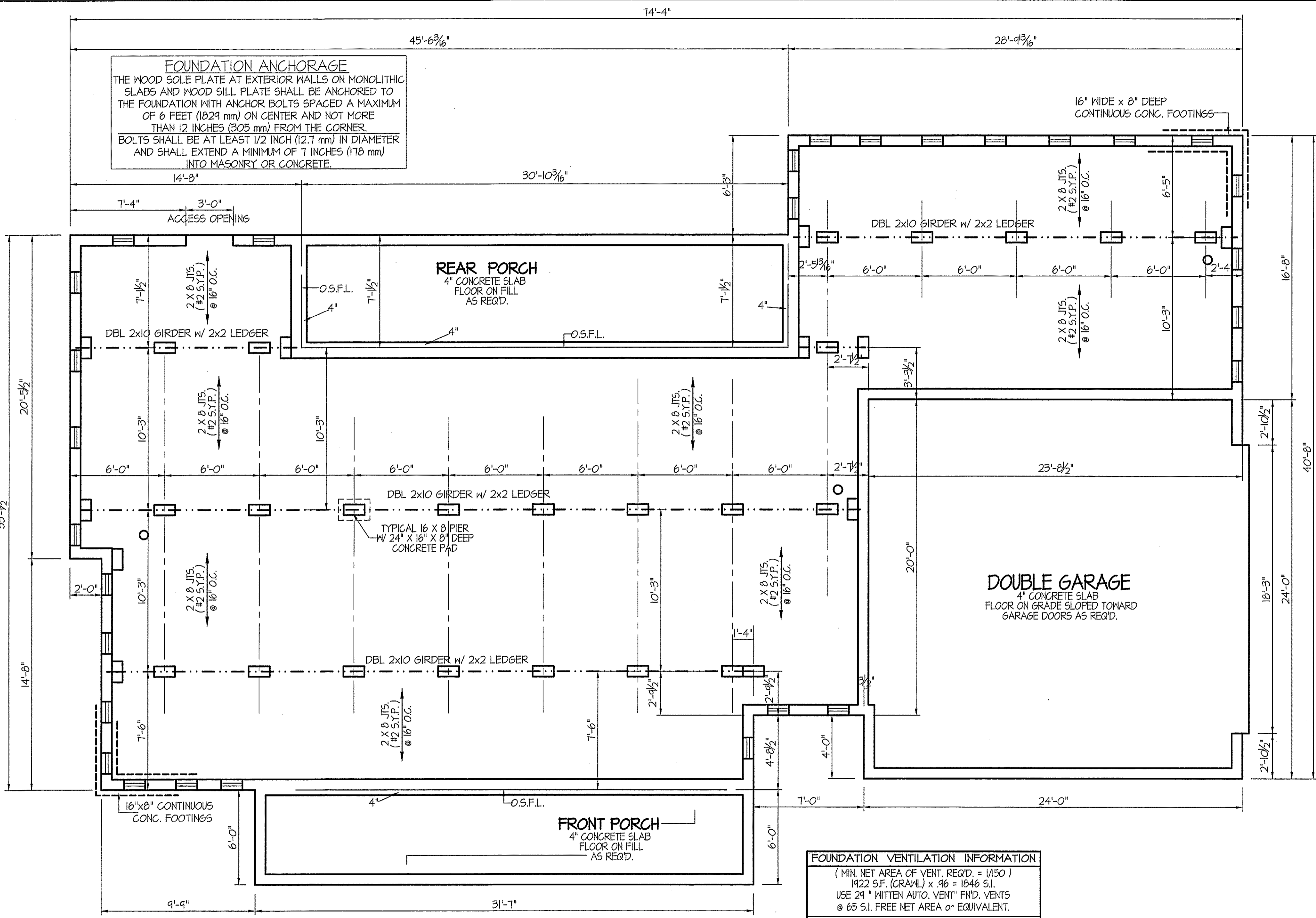
HEADER SPAN (feet)	MAX. STUD SPACING (Inches) [per Table R602.3(5)]	
	16	24
< 3'	1	1
4'	2	1
8'	3	2
12'	5	3
16'	6	4

HEADER SCHEDULE

SYMBOL #	SIZE	JACKS
H-1	(2) 2x10	1
H-2	(2) 2x10	2
H-3	(2) 2x8	2
H-4	(2) 2x12	2
H-5	(2) 1.75 x 9.25 LVL	3

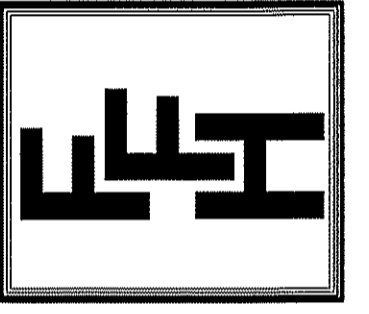
GIRDER AND HEADER SIZES AND JACK STUD REQUIREMENTS ON EXTERIOR AND INTERIOR LOAD BEARING WALLS ARE TO COINCIDE WITH TABLE EXT.-R602.7 (1) AND INT.-R602.7 (2).

ALL EXTERIOR WALLS TO BE SHEATHED WITH CS-WSP (7/16" OSB) IN ACCORDANCE WITH SECTION R602.10.3 UNLESS OTHERWISE NOTED.



DATE:
 JANUARY 19, 2023

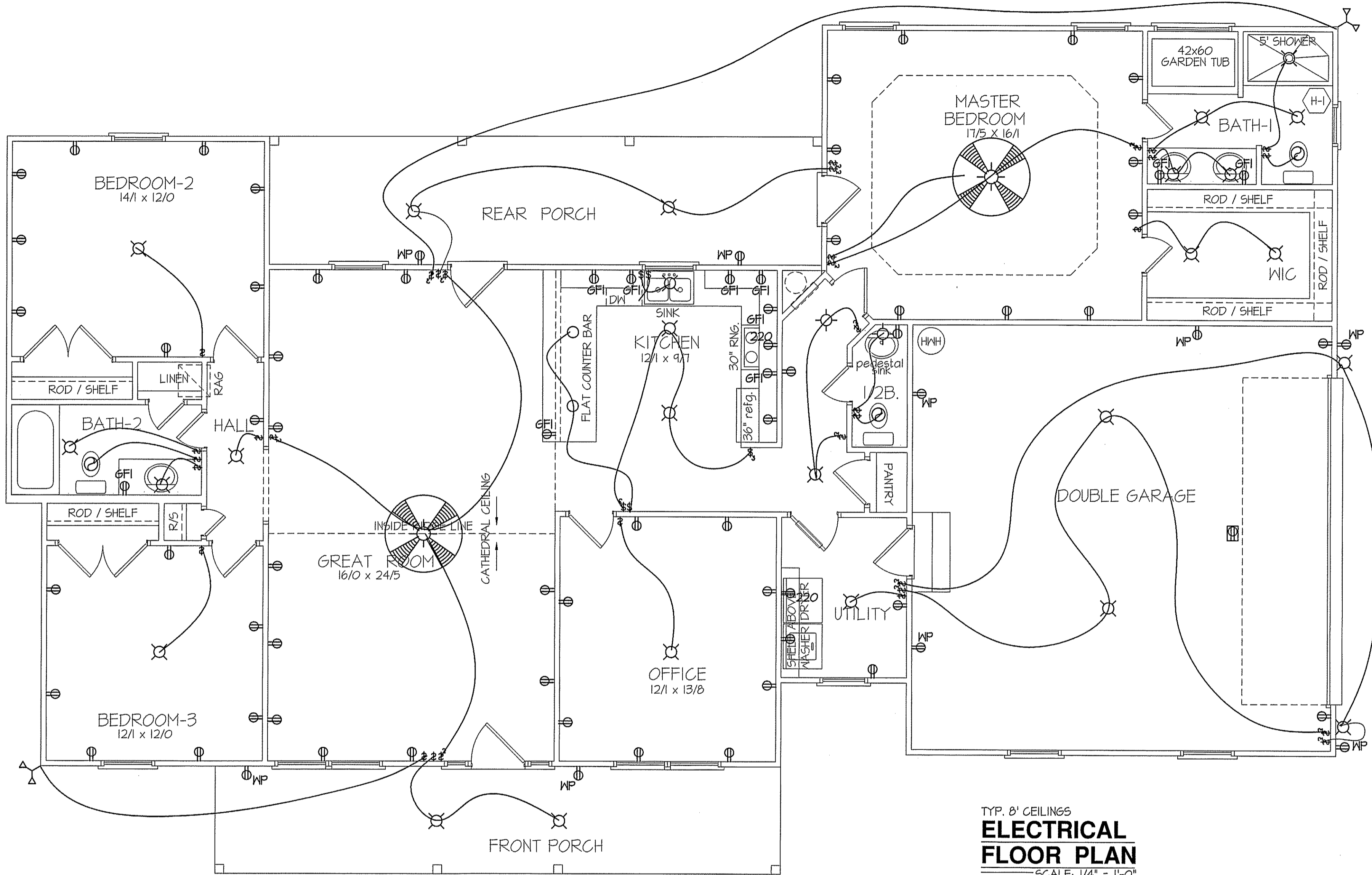
FREEDOM FAMILY HOMES
 P.O. BOX 608
 DUNN, N.C. - 28335
 O: (910) 892-1231 FAX: (910) 892-5680
 © 2023, FREEDOM FAMILY HOMES



**EXCLUSIVE PLAN FOR
 FREEDOM FAMILY HOMES**
Campbell-Thomas

PLAN:
 SHEET NO.
3

BOX SILL
FOUNDATION PLAN
 SCALE: 1/4" = 1'-0"



TYP. 8' CEILINGS
ELECTRICAL FLOOR PLAN
 SCALE: 1/4" = 1'-0"

TOTAL HEAT GAIN = 30,944 B.T.U.H.
 TOTAL HEAT LOSS = 48,915 B.T.U.H.

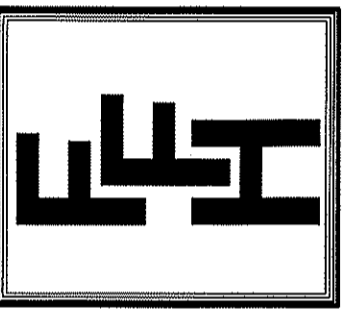
NOTE:
 HVAC CONTRACTOR TO PROVIDE OWNERS AND BUILDERS UNIT INFORMATION, BTUH REQUIREMENTS, AND DUCT LAYOUTS BEFORE CONSTRUCTION BEGINS.

1922 S.F. (HEATED-FRAME)
 190 S.F. (FRONT PORCH)
 220 S.F. (REAR PORCH)
 570 S.F. (DBL. GARAGE)

ELECTRICAL LEGEND		
<small>PROVIDE BURGLAR/SMOKE AND FIRE DETECTORS AS PER MANUFACTURER'S SPECIFICATIONS. PROVIDE CENTRAL VACUUM SYSTEM AS PER MANUFACTURER'S SPECIFICATIONS. ALL FANS ARE TO BE CONTROLLED BY VAR/SPEED AND DIRECTIONAL SWITCHES</small>		
⊕ SURF. MOUNTED LIGHT	⊕ TYPICAL WALL RECP.	⊕ TYPICAL SWITCH
○ RECESSED LIGHT	⊕ TOP 1/2 HOT W/SWITCH	⊕ 3-WAY SWITCH
⊕ EYEBALL LIGHT	⊕ CEILING RECEPTACLE	⊕ 4-WAY SWITCH
⊕ FAN/LIGHT COMB.	⊕ FLOOR RECEPTACLE	⊕ DIMMER SWITCH
— FLUORESCENT TUBE	⊕ WATERPROOF RECP.	⊕ ELEC. PANEL BOX
⊕ FLUOR. LIGHT FIXTURE	⊕ GROUND FAULT	⊕ T.V. CABLE RECP.
⊕ EXHAUST FAN	⊕ DISPOSAL UNIT	⊕ TELEPHONE JACK
⊕ CL'G. FAN	⊕ 220 VOLT RECEPTACLE	⊕ COMPUTER JACK
⊕ FLOOD LIGHT		

DATE:
 JANUARY 19, 2023

FREEDOM FAMILY HOMES
 P.O. BOX 608
 DUNN, N.C. - 28335
 O: (910) 892-1231 FAX: (910) 892-5680
 © 2023, FREEDOM FAMILY HOMES



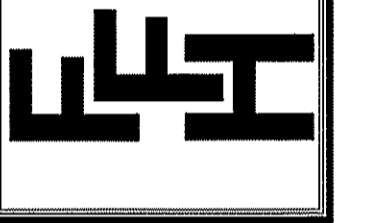
EXCLUSIVE PLAN FOR
 FREEDOM FAMILY HOMES
Campbell-Thomas

PLAN:
 SHEET NO.
4

DATE:

JANUARY 19, 2023

FREEDOM FAMILY HOMES
 P.O. BOX 608
 DUNN, N.C. - 28335
 (910) 892-1231 FAX: (910) 892-5680
 ©2023, FREEDOM FAMILY HOMES



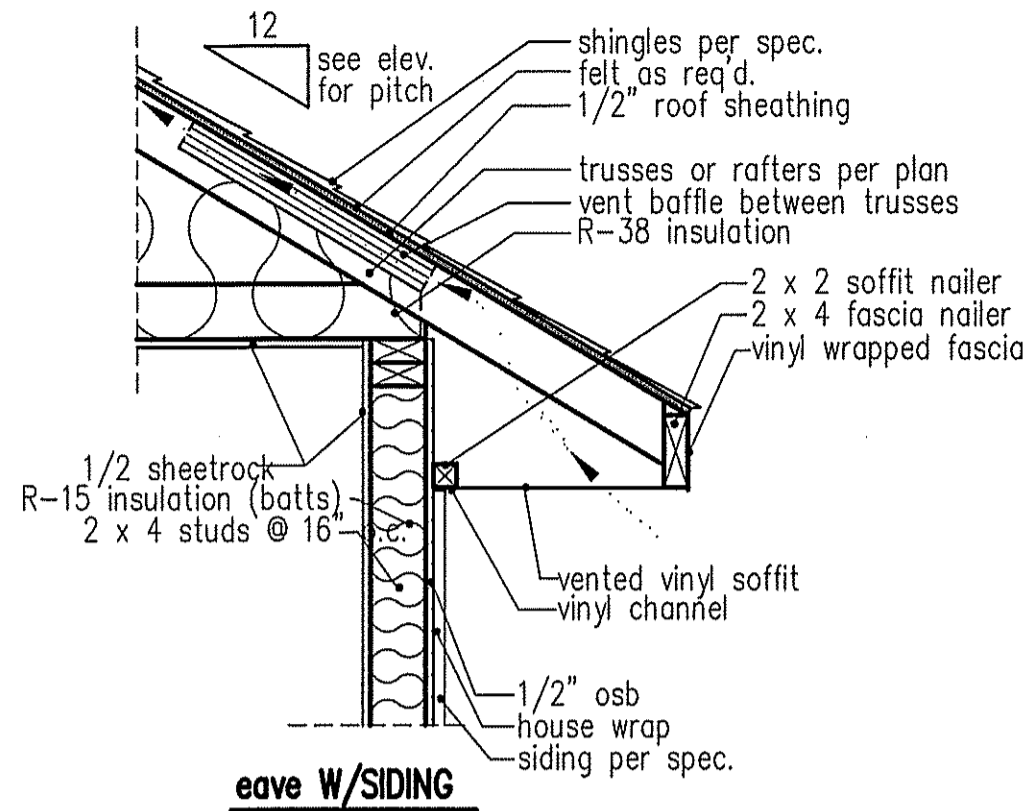
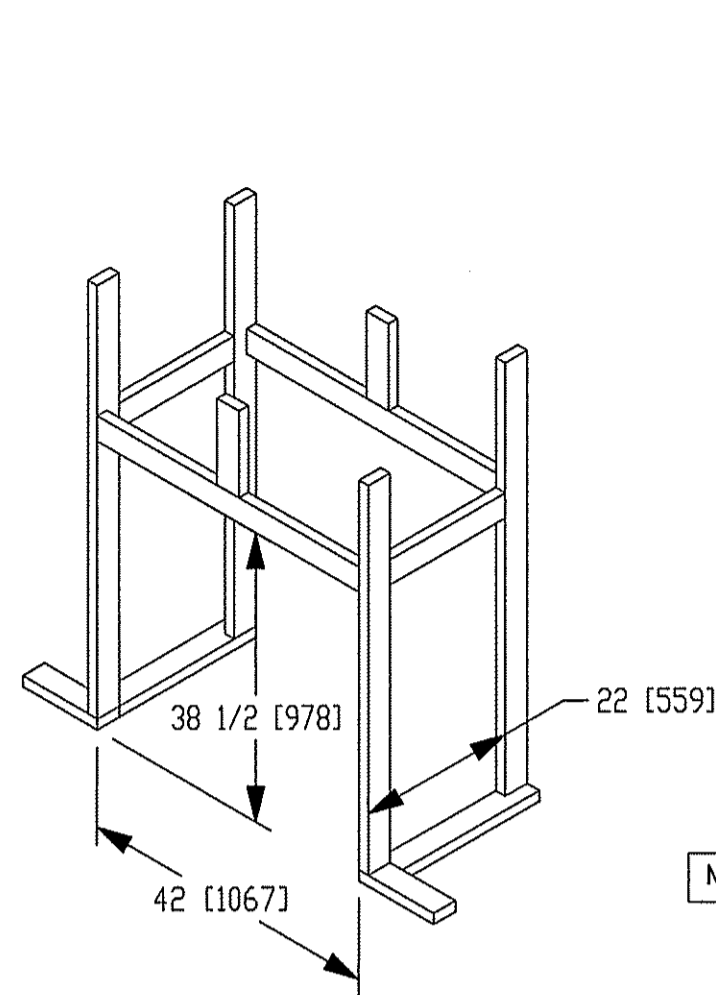
**EXCLUSIVE PLAN FOR
 FREEDOM FAMILY HOMES**

Campbell-Thomas

PLAN:

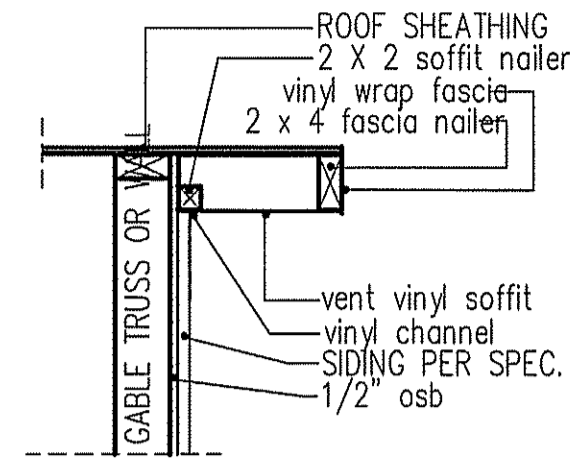
SHEET NO.

5



NOTE: OVERHANG DISTANCE NOTED ON ELEVATION SHEET IS ALWAYS MEASURED FROM FRAME LINE

standard eave details



RAKE w/SIDING

NOTE: OVERHANG DISTANCE NOTED ON ELEVATION SHEET IS ALWAYS MEASURED FROM FRAME LINE

TABLE R602.7.5
 MINIMUM NUMBER OF FULL HEIGHT STUDS
 AT EACH END OF HEADERS IN EXTERIOR WALLS

HEADER SPAN (feet)	MAX. STUD SPACING (Inches) [per Table R602.3(5)]	
	16	24
< 3'	1	1
4'	2	1
8'	3	2
12'	5	3
16'	6	4

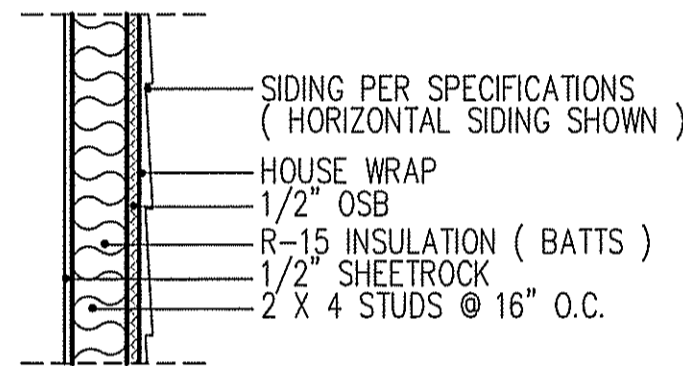
GIRDER AND HEADER SIZES AND JACK STUD REQUIREMENTS ON EXTERIOR AND INTERIOR LOAD BEARING WALLS ARE TO COINCIDE WITH TABLE EXT.~R602.7 (1) AND INT.~R602.7 (2).

DIMENSIONS IN [] ARE MM

SPECIFICATIONS

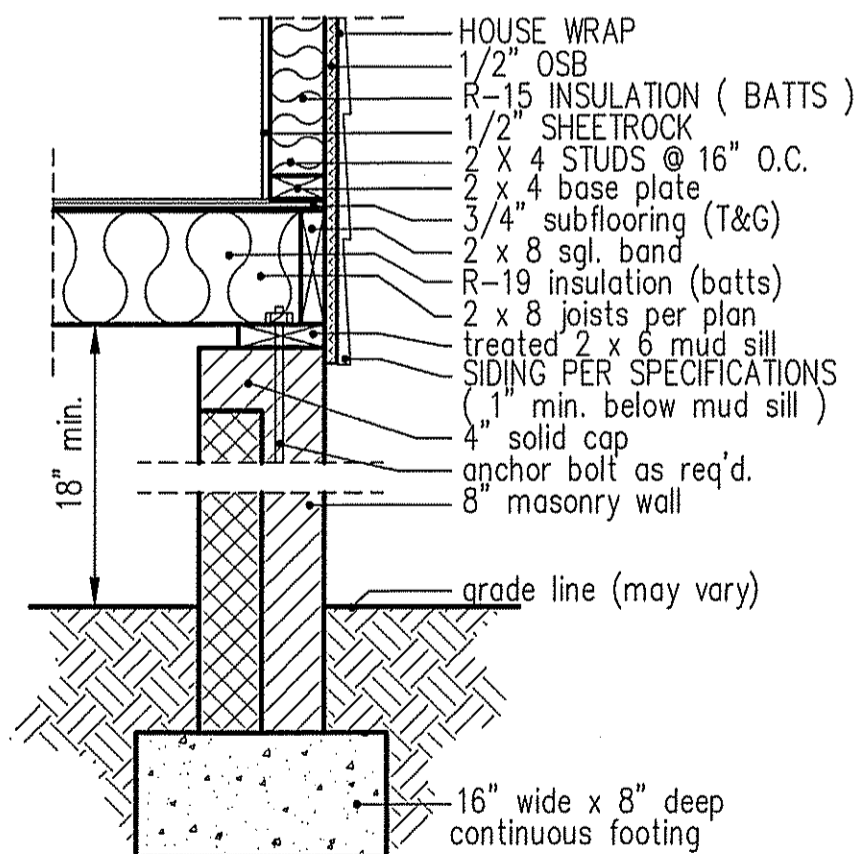
Model 6000-TR	Height		Front Width		Back Width		Depth		Glass Size	BTU Input
	Actual	Framing	Actual	Framing	Actual	Framing	Actual	Framing		
Inches	38	38-1/2	41	42	28-1/2	42	21-1/2	22		

Reference dimensions only. We recommend measuring individual units at installation.

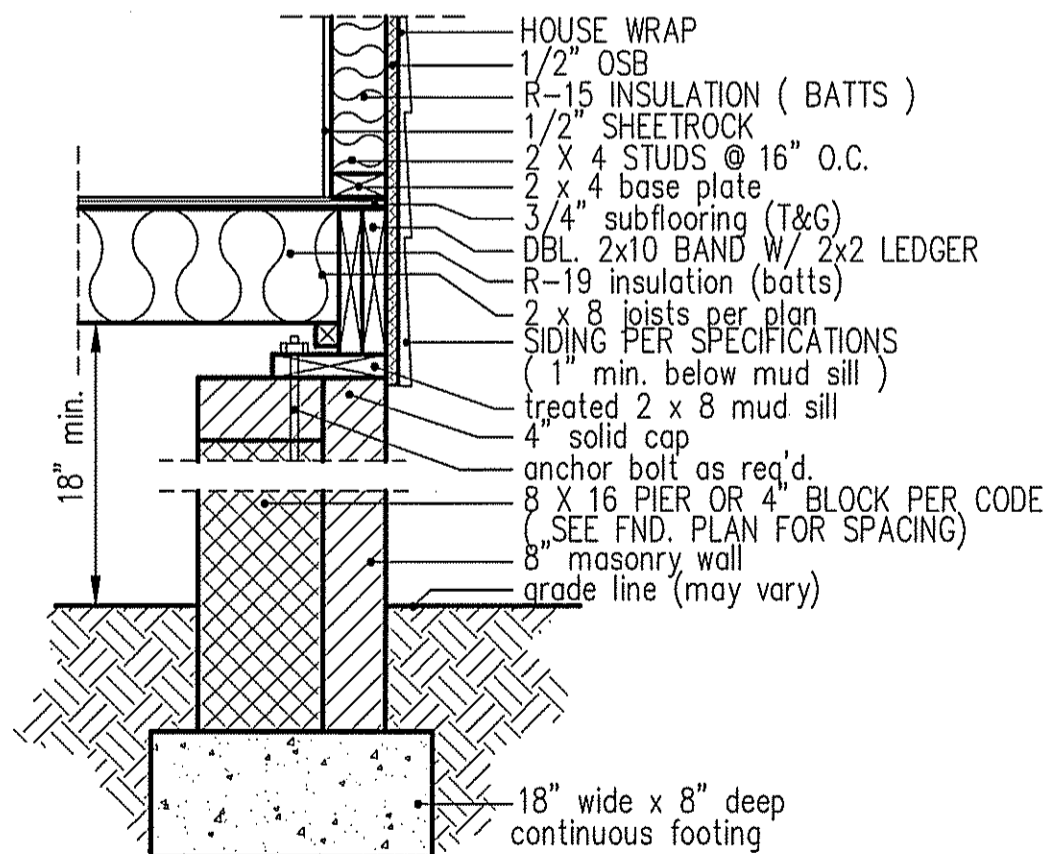


WALL W/siding

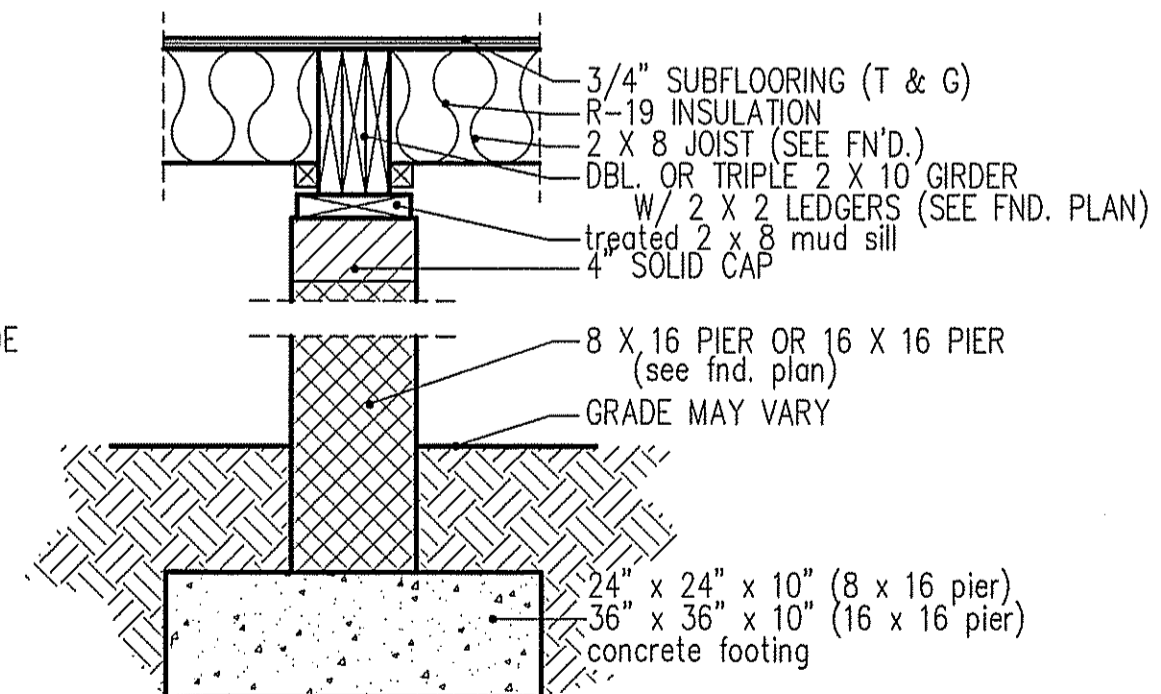
intermediate wall details



**8" BOX SILL
 FOUNDATION WALL**



**PIER and CURTAIN
 FOUNDATION WALL**



**PIER and GIRDER
 DETAIL**