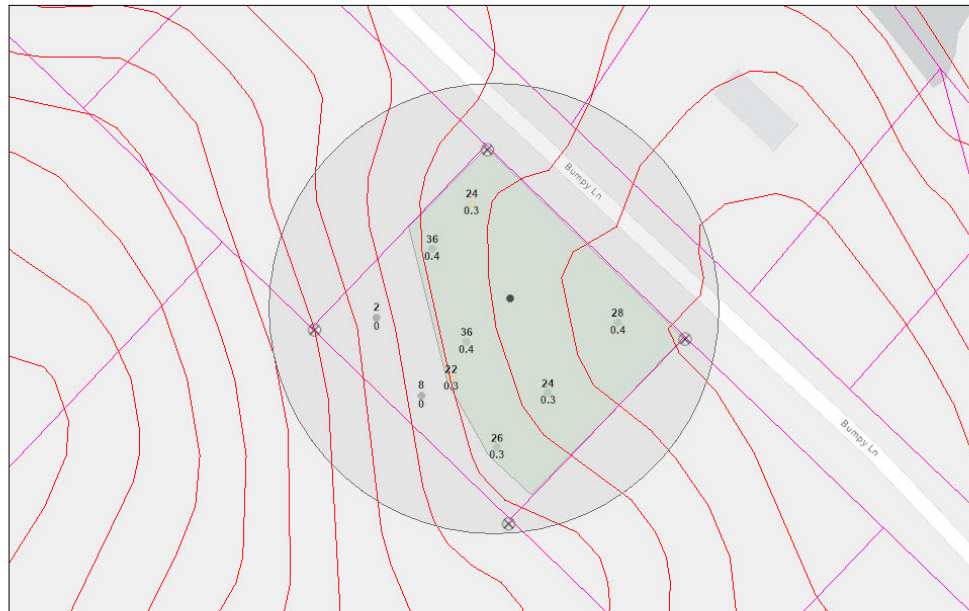




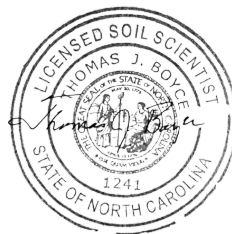
# 323 Bumpy Lane Soil Evaluation Report

## Area of Interest (AOI) Information

Jan 17 2024 19:17:27 Eastern Standard Time



**An area was identified that may be possible to use for a 360GPD/3BR subsurface wastewater system. The system type and exact location would need to be confirmed with a field layout/design. Client will need to confirm there are no restrictions, easements, right of ways or other encumbrances on the property that would limit the use of the area shown on the report.**



## Summary

Name	Count	Area(ft <sup>2</sup> )	Length(ft)
Borings	9	N/A	N/A
Points	4	N/A	N/A
System Details	0	N/A	N/A
2021 Field Data - Borings - PEA_Borings	0	N/A	N/A

## Borings

#	Boring Type	Slope	Landscape Position	LTAR	Saprolite	Soil Wetness	H1 Depth	H1 Texture
1	Conventional	5-8%	Linear	0.40	No	28	16	Loamy Sand
2	Conventional	5-8%	Linear	0.30	No	24	8	Loamy Sand
3	Conventional	8-12%	Linear	0.40	No	N/A	16	Loamy Sand
4	Conventional	8-12%	Linear	0.30	No	26	18	Loamy Sand
5	Out	8-12%	Linear	0.00	No	N/A	8	Loamy Sand
6	Low Profile	8-12%	Linear	0.30	No	22	10	Loamy Sand
7	Out	8-12%	Linear	0.00	No	N/A	N/A	N/A
8	Conventional	8-12%	Linear	0.40	No	N/A	30	Loamy Sand
9	Low Profile	8-12%	Linear	0.30	No	24	16	Loamy Sand

#	H1 Moist Consistency	H1 Structure	H1 Mineralogy	H1 Stickiness	H1 Plasticity	H2 Texture	H2 Moist Consistency	H2 Depth
1	Loose	Gr	Non Expansive	Non Sticky	Non Plastic	SC Loam	Friable	28
2	Loose	Gr	Non Expansive	Non Sticky	Non Plastic	Clay	Friable	24
3	Loose	Gr	Non Expansive	Non Sticky	Non Plastic	SC Loam	Friable	36
4	Loose	Gr	Non Expansive	Non Sticky	Non Plastic	SC Loam	Friable	26
5	Loose	Gr	Non Expansive	Non Sticky	Non Plastic	N/A	N/A	N/A
6	Loose	Gr	Non Expansive	Non Sticky	Non Plastic	SC Loam	Friable	22
7	N/A	N/A	N/A	N/A	N/A	N/A	N/A	N/A
8	Loose	Gr	Non Expansive	Non Sticky	Non Plastic	SC Loam	Friable	36
9	Loose	Gr	Non Expansive	Non Sticky	Non Plastic	Sandy Clay	Friable	24

#	H2 Structure	H2 Mineralogy	H2 Stickiness	H2 Plasticity	H3 Depth	H3 Texture	H3 Moist Consistency	H3 Structure
1	SBK	Slightly Expansive	Sticky	Plastic	N/A	N/A	N/A	N/A
2	SBK	Slightly Expansive	Sticky	Plastic	N/A	N/A	N/A	N/A
3	SBK	Slightly Expansive	Sticky	Plastic	N/A	N/A	N/A	N/A
4	SBK	Slightly Expansive	Sticky	Plastic	N/A	N/A	N/A	N/A
5	N/A	N/A	N/A	N/A	N/A	N/A	N/A	N/A
6	SBK	Slightly Expansive	Sticky	Plastic	N/A	N/A	N/A	N/A
7	N/A	N/A	N/A	N/A	N/A	N/A	N/A	N/A
8	SBK	Slightly Expansive	Sticky	Plastic	N/A	N/A	N/A	N/A
9	SBK	Slightly Expansive	Sticky	Plastic	N/A	N/A	N/A	N/A

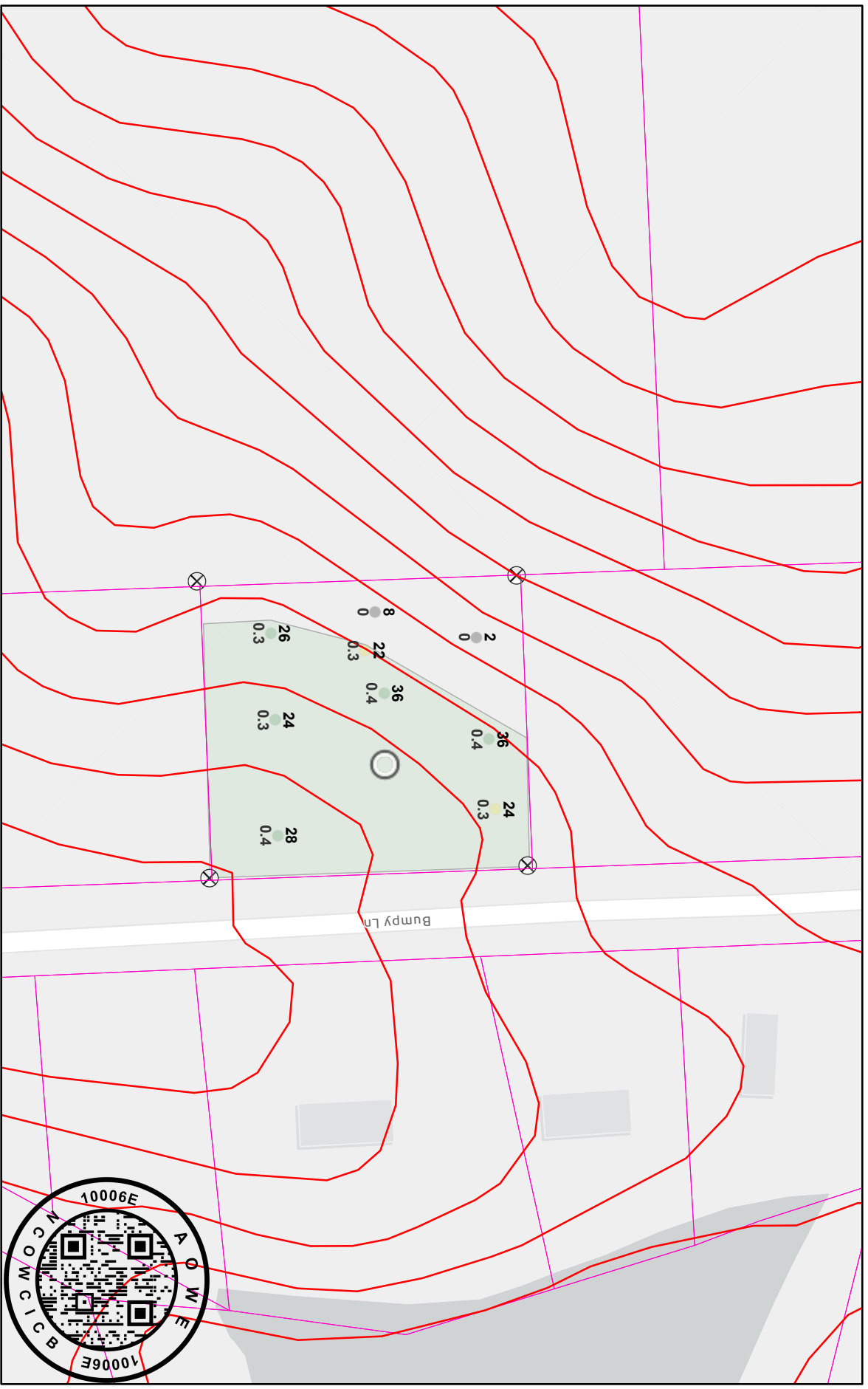
#	H3 Mineralogy	H3 Stickiness	H3 Plasticity	Notes	Usable Depth	Count
1	N/A	N/A	N/A	N/A	28	1
2	N/A	N/A	N/A	Exp@24	24	1
3	N/A	N/A	N/A	N/A	36	1
4	N/A	N/A	N/A	N/A	26	1
5	N/A	N/A	N/A	Exp@8	8	1
6	N/A	N/A	N/A	Exp @22	22	1
7	N/A	N/A	N/A	Exp @2	2	1
8	N/A	N/A	N/A	N/A	36	1
9	N/A	N/A	N/A	N/A	24	1

**Points**

#	Points	Description	Count
1	Property Marker	N/A	1
2	Property Marker	N/A	1
3	Property Marker	N/A	1
4	Property Marker	N/A	1

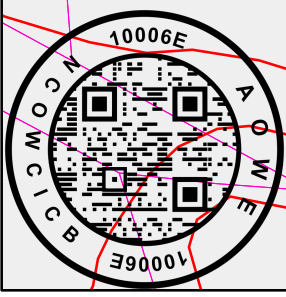
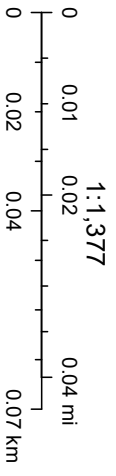
All ratings and determinations were done in accordance with "Laws and Rules for Sewage Treatment and Disposal Systems, 15A NCAC .1900". This report does not guarantee or represent approval or issuance of permits by the local health department. This report only represents my opinion as a licensed soil scientist.

# 323 Bumpy Lane 2024



1/17/2024

- Contours: 2' Interval
- North Carolina Parcels (Polygons) - Parcels
- Usable Soils Area
- PSC - Borings
- Conventional
- Low Profile
- Out
- PSC - Points
- X
 EIP



Esri Community Maps Contributors, State of North Carolina DOT, © OpenStreetMap, Microsoft, Esri, TomTom, Garmin, SafeGraph,