



- LEGEND**
- PO=PORCH
 - P=PATIO
 - SW=SIDEWALK
 - DW=CONC DRIVEWAY
 - EB=ELECTRIC BOX
 - SCO=CLEANOUT
 - TP=TELEPHONE PEDESTAL
 - WM=WATER METER
 - AC=AIR CONDITIONING UNIT
 - BOC=BACK OF CURB
 - EOP=EDGE OF PAVEMENT
 - IRON PIPE FOUND
 - ⊙ IRON PIPE SET
 - NAIL SET

THIS SURVEY IS OF AN EXISTING PARCEL OR PARCELS OF LAND AND DOES NOT CREATE A NEW STREET OR CHANGE AN EXISTING STREET.

SHAWN T. RUMBERGER, PLS L-4909 DATE _____

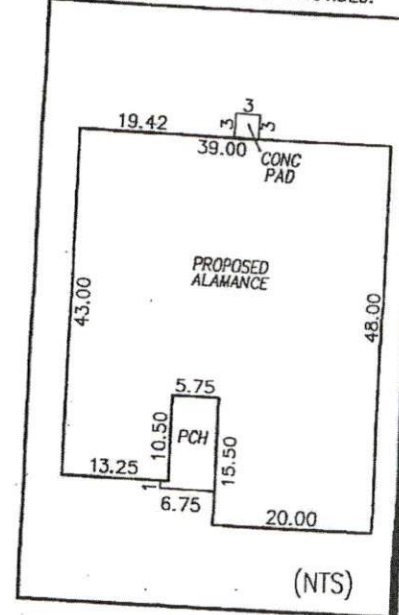
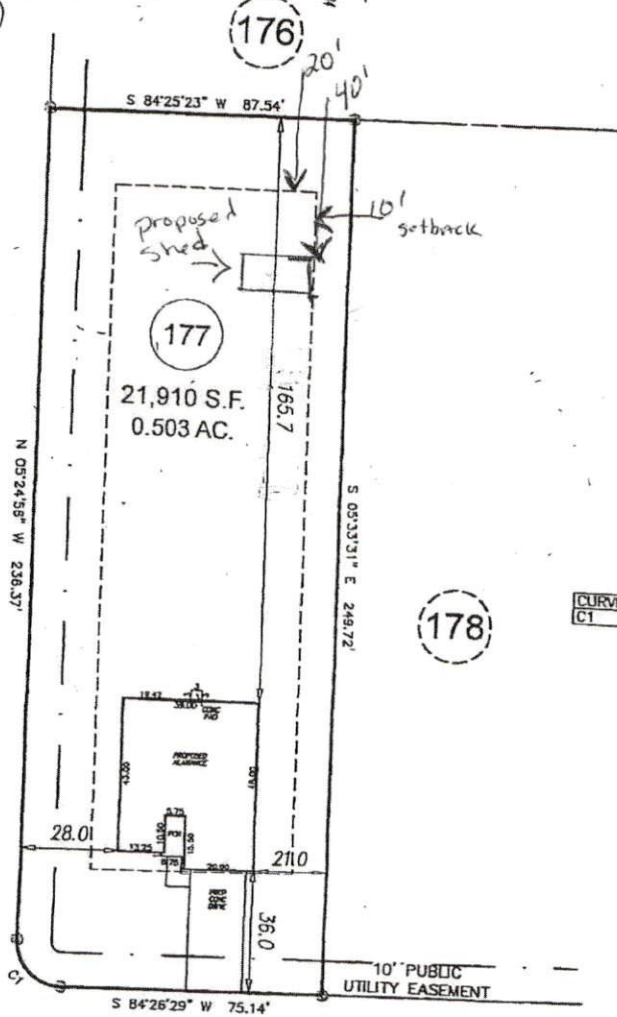
THIS MAP IS ONLY INTENDED FOR THE PARTIES AND PURPOSES SHOWN. THIS MAP IS NOT FOR RECORDATION. NO TITLE REPORT PROVIDED.

VICINITY MAP (NTS)

174

REVISION: CHANGED HOUSE TO ALAMANCE PER REQUEST 3-21-19 AMW

AVERY POND DRIVE
50' PUBLIC & UTILITY R/W



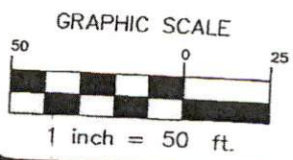
CURVE	ARC LENGTH	RADIUS	CHORD BEARING	CHORD LENGTH
C1	20.74'	13.00'	N 49°51'36" W	18.61'

SETBACKS

- FRONT 35'
- SIDE 10'
- REAR 20'
- SIDE STREET 20'

IMPERVIOUS AREA:

- HOUSE 1,784 SQ.FT.
- DRIVE 576 SQ.FT.
- WALK 52 SQ.FT.
- CONCRETE PAD 9 SQ.FT.
- TOTAL 2,421 SQ.FT.
- MAX. ALLOW 2,850 SQ.FT.

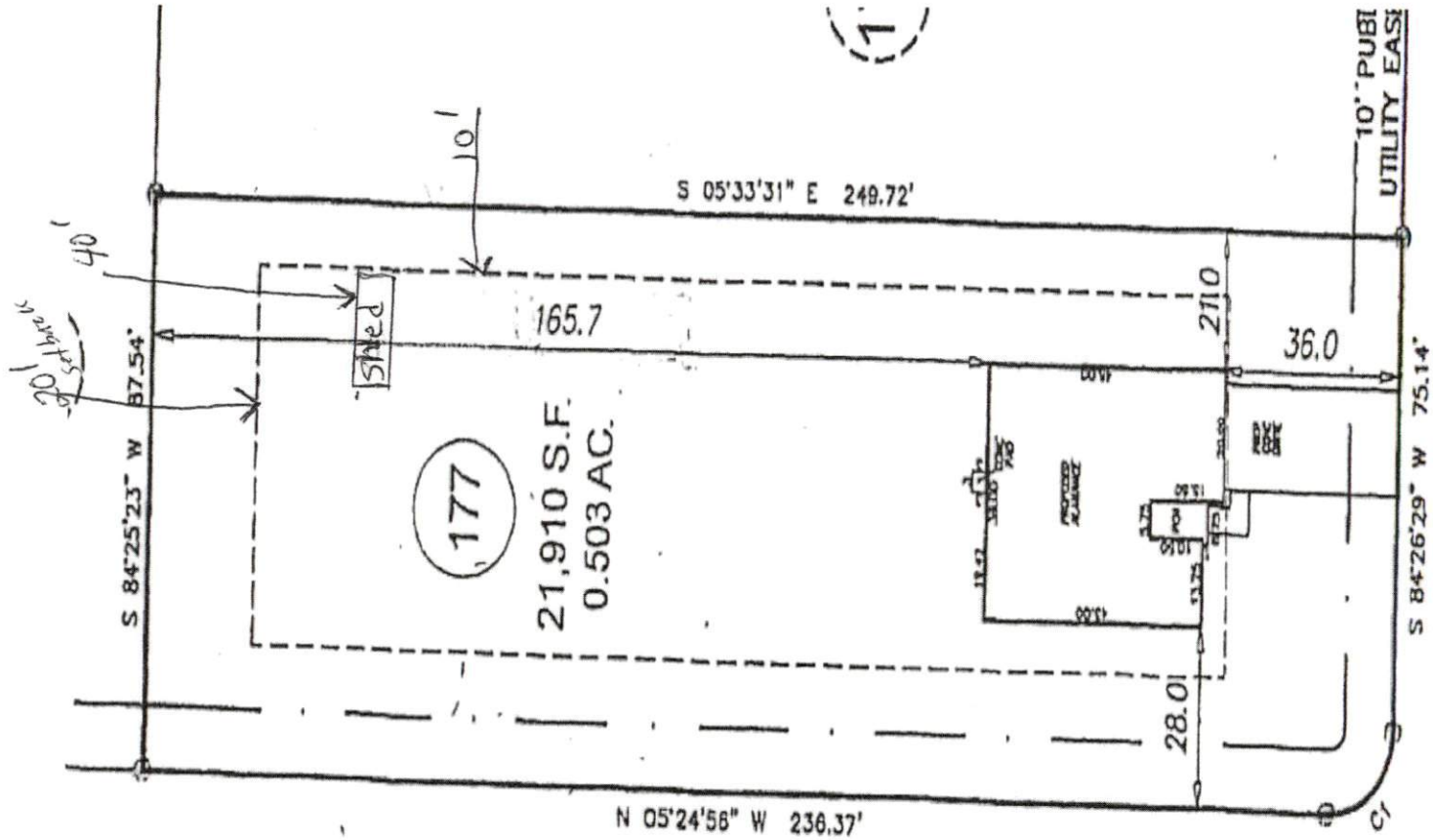


PRELIMINARY PLOT PLAN

PROJECT:	18-003 AVERY POND
DRAWN BY:	AMW
SCALE:	1"=50'
DATE:	02-25-19

FOR
LGI HOMES
MINERAL SPRING LANE
LOT 177 AVERY POND SUBDIVISION; PHASE IIIA
HECTOR'S CREEK TWP., HARNETT CO., NC
P.B. 2018, PG. 382-384

ECLS GLOBAL, INC.
U.S. VETERAN-OWNED
19 N MCKINLEY ST
COATS, NC 27521
910.897.3257 ECLSGLOBALINC.COM
910.897.2329 (FAX) CO#C-4175



AVERY POND DRIVE
50' PUBLIC & UTILITY R/W

MINERAL SPRING LANE
50' PUBLIC & UTILITY R/W

DATE