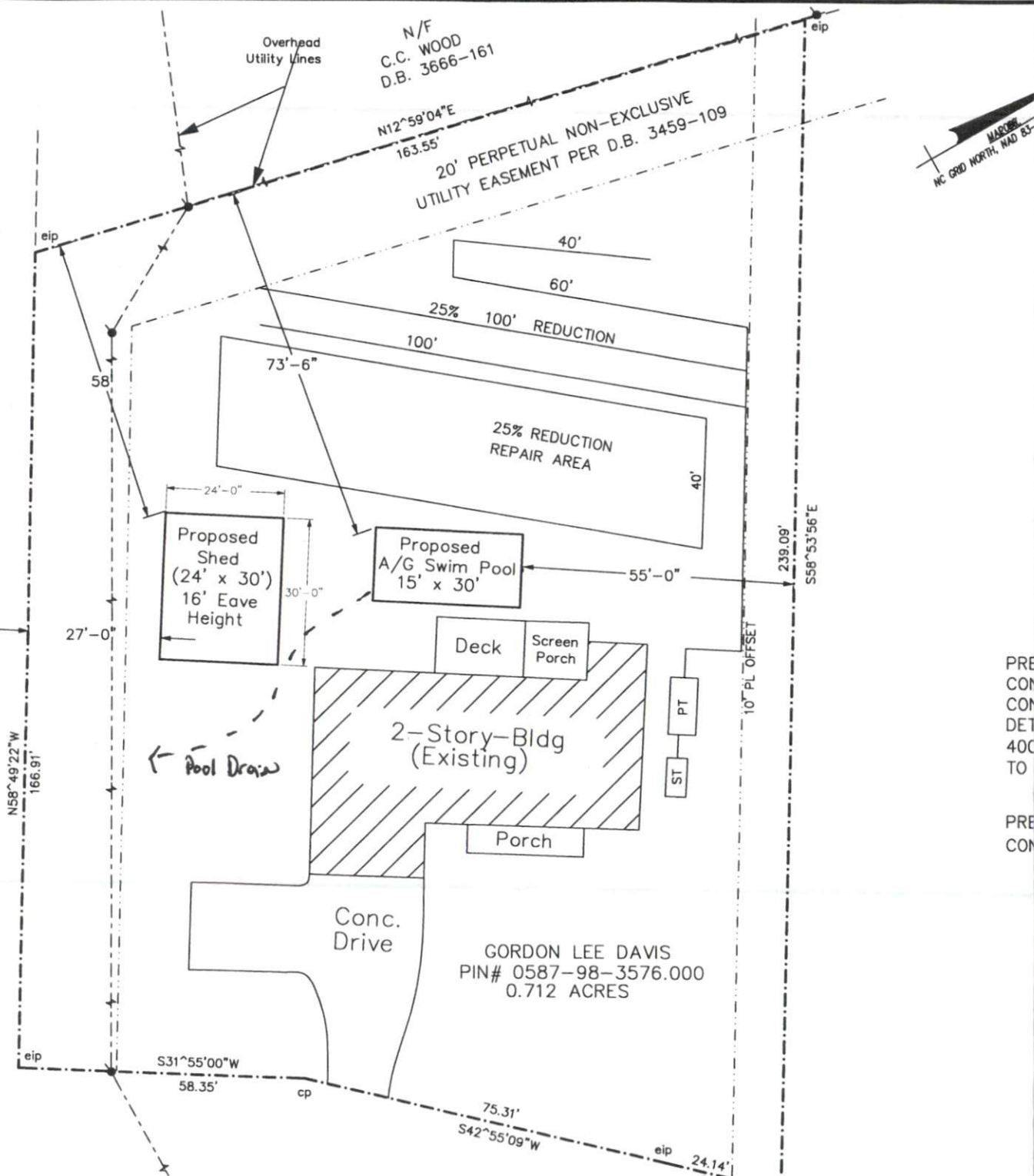


GLEN RUTH ROAD (APPROXIMATE) 20' PRIVATE R/W



N/F
C.C. WOOD
D.B. 3666-161

20' PERPETUAL NON-EXCLUSIVE
UTILITY EASEMENT PER D.B. 3459-109

MARSH
MC GRID NORTH, NAD 83

PRE
CON
DET
400
TO

PRE
CON

GORDON LEE DAVIS
PIN# 0587-98-3576.000
0.712 ACRES