

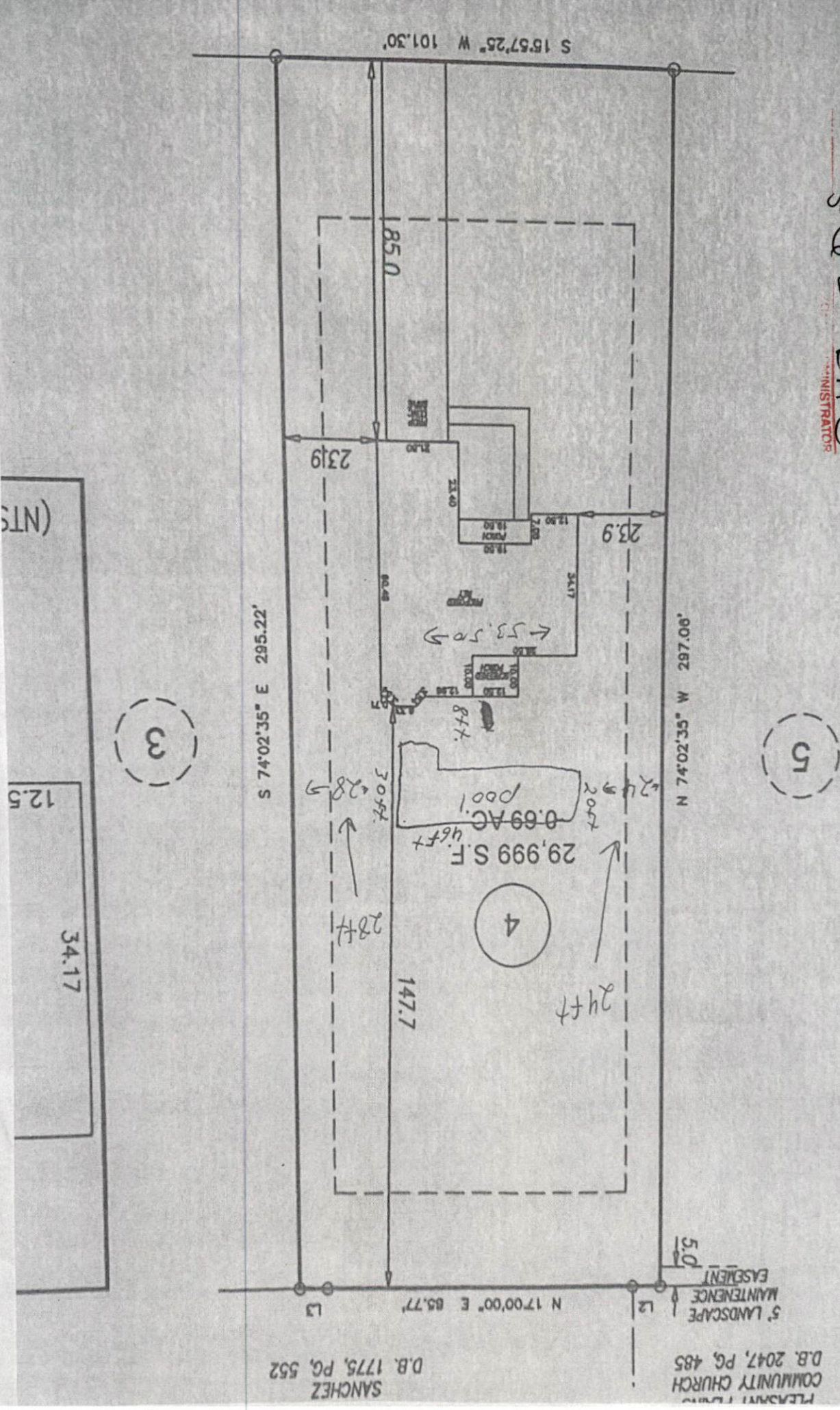
SITE PLAN APPROVAL

DISTRICT RA 30 USE 20x40x30

BEDROOMS: —

S-10-21 L.A.-6
ADMINISTRATOR

REVISION: MOVED HOUSE BACK 30' PER REQUEST 1-30-20
REVISION: MOVED HOUSE TO SIT AT 85' FROM THE ROAD PER REQUEST 2/19/20
shaped
inground
pool



SANCHEZ
D.B. 1775, PG. 552

PLEASANT HILLS
COMMUNITY CHURCH
D.B. 2047, PG. 485

5' LANDSCAPE
MAINTENANCE
EASEMENT

3

5

4