

SCALE:
1" = 50'

DATE:
15 AUGUST 2017

FILE NAME:
Wyndham Place Lot 9.dwg

TOWNSHIP:
BLACK RIVER

LOT 9 SECTION ----- TRACT ----- PHASE 2

SUBDIVISION WYNDHAM PLACE AS

RECORDED IN MAP BOOK 2006 PAGE 1094

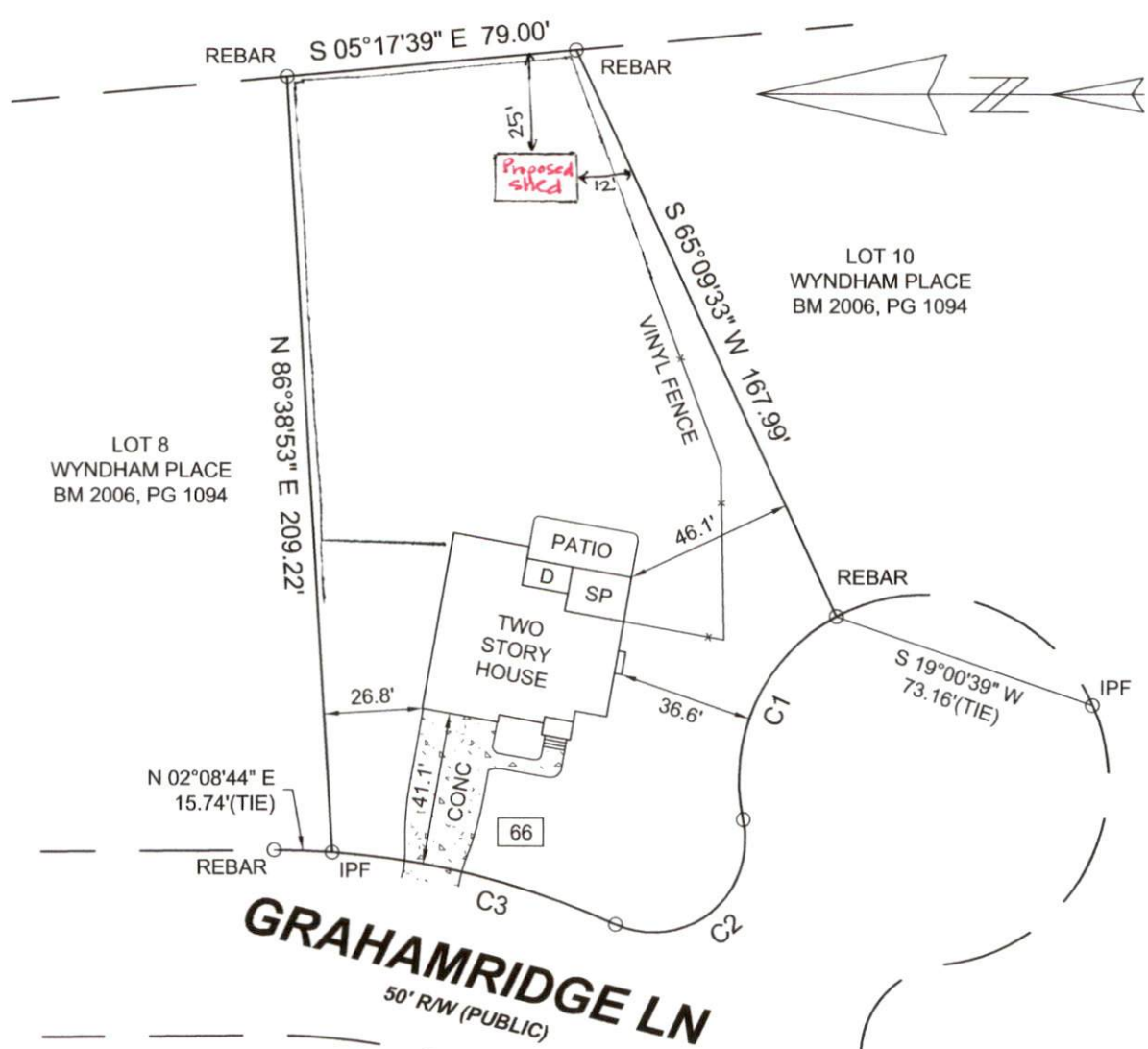
HARNETT COUNTY REGISTRY.

NOTES:
1. ALL AREAS ARE BY COORDINATE GEOMETRY.
2. ALL DISTANCES ARE HORIZONTAL GROUND UNLESS OTHERWISE NOTED.
3. NORTH ARROW IS PER RECORDED MAP OR DEED LISTED ABOVE UNLESS OTHERWISE NOTED.

LEGEND:
IPF = IRON PIPE FOUND
IPS = IRON PIPE SET
CP = COMPUTED POINT
□ = CONCRETE MONUMENT
D = DECK
P = PORCH
■ = ELECTRIC TRANSFORMER
FH = FIRE HYDRANT
LP = LIGHT POLE
PP = POWER POLE
-OE- = OVERHEAD ELECTRIC LINE
-- = FENCE
MISA = MAXIMUM IMPERVIOUS SURFACE AREA

SITE DATA:
WYNDHAM PLACE, LOT 9
AREA = 0.578 AC.
25,157.6 sq.ft.

CURVE	ARC LEN	RADIUS	CH LENGTH	CH BEARING
C1	64.83'	50.00'	60.38'	N 65°16'04" W
C2	55.27'	25.00'	44.68'	N 39°05'08" W
C3	79.86'	225.00'	79.44'	N 14°03'58" E



STATE OF NORTH CAROLINA,
WAKE COUNTY
I, KEVIN S. CHANCE, CERTIFY THAT THIS MAP WAS DRAWN UNDER MY SUPERVISION FROM AN ACTUAL SURVEY BY ME (OR UNDER MY DIRECT SUPERVISION) - (DEED DESCRIPTION RECORDED IN BOOK ___ PAGE ___); THAT THE RATIO OF PRECISION AS CALCULATED BY LATITUDES AND DEPARTURES IS 1/10,000+; THAT THE BOUNDARIES NOT SURVEYED ARE SHOWN AS BROKEN LINES DRAWN FROM INFORMATION FOUND IN BOOK ___ PAGE ___; THAT THIS MAP WAS PREPARED IN ACCORDANCE WITH G.S. 47-30 AS AMENDED. WITNESS MY HAND AND SEAL THIS 15th DAY OF AUGUST, 2017

Kevin S. Chance PLS (L-4585)

FINAL SURVEY FOR
MEREDITH TROTTER
HARNETT COUNTY, NORTH CAROLINA

