

Greg Seese

EXISTING HOUSE

4/20/2021

1 OF 2

3 1/2" CONCRETE PAD

NEW DECK #1  
W/ COVERED ROOF  
THIS SECTION

EXISTING DECK  
TO BE USED  
NEW DECKING

2" 3/4" CONCRETE PAD

#2 2" X 2" X 1'-6"  
FOOTERS  
W/ CMU  
BLOCK  
PIERS

#2  
1 1/2" PT BLOCK  
8" CMU BLOCK PARGE  
(TYP) FOR 5

SINGLE 2X10 PT  
ATTACHED  
TO HOUSE

DOUBLE 2X10 PT  
BANDING

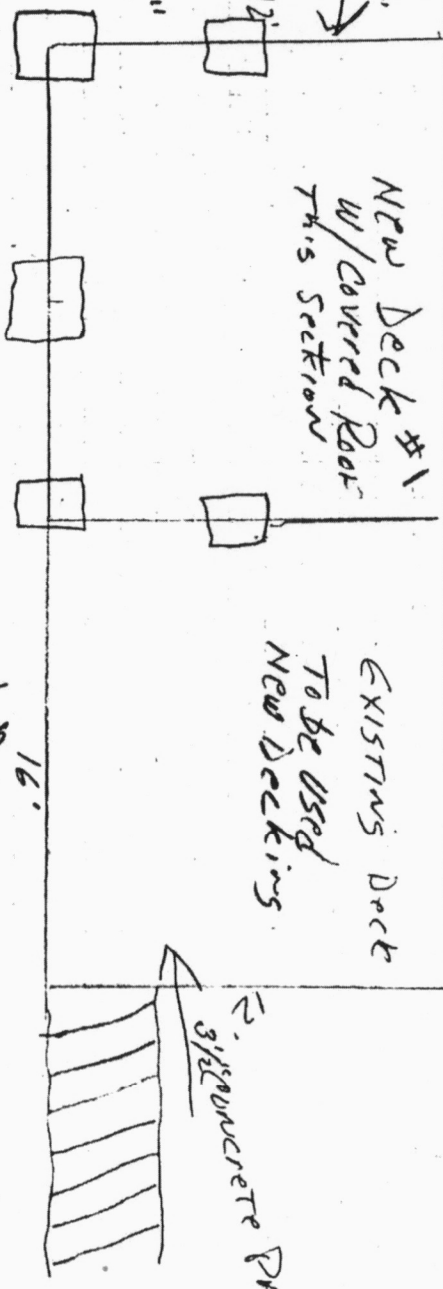
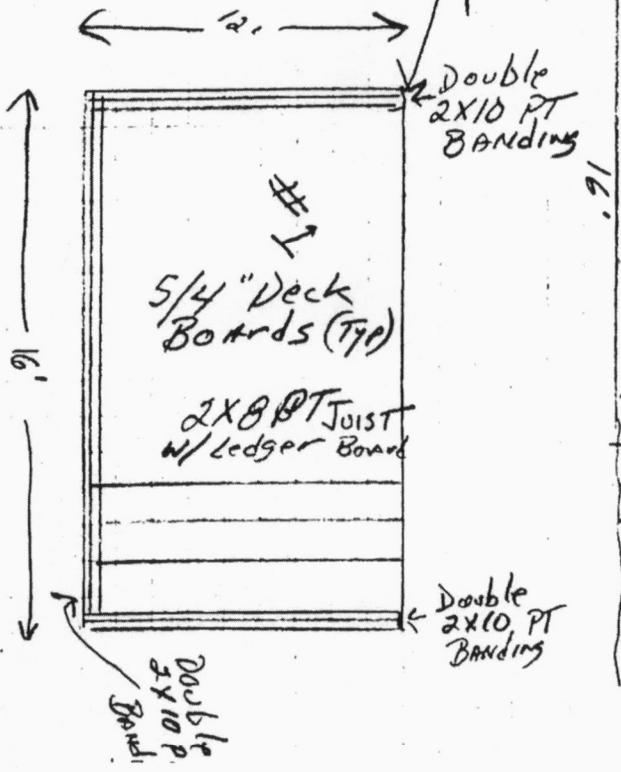
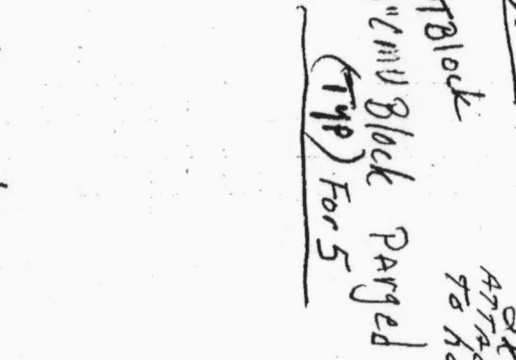
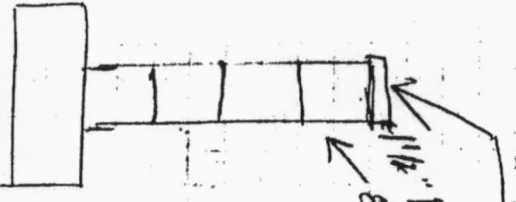
#1  
5/4" DECK  
BOARDS (TYP)

2X8 PT JOIST  
W/ LEDGER BOARD

DOUBLE 2X10 PT  
BANDING

DOUBLE 2X10 PT  
BANDING

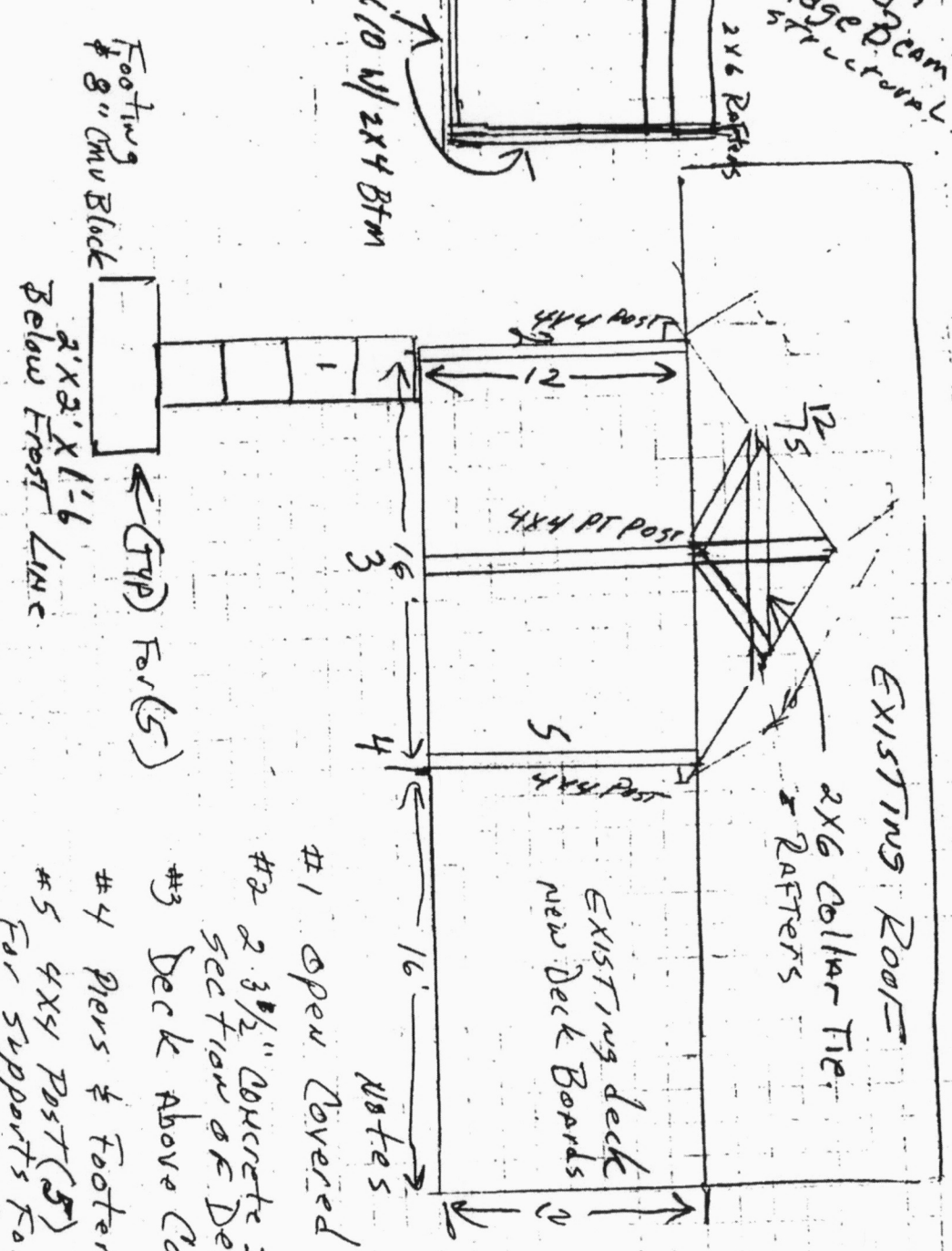
2" X 2" X 1'-6"  
FOOTERS W/ 8" CMU BLOCK PIERS



Greg Seese

4/20/21

2 OF 2



- #1 Open Covered Roof
- #2 2 3/2" CONCRETE PADS UNDER EACH SECTION OF DECKING
- #3 Deck ABOVE CONCRETE PAD.
- #4 Piers & Footers BELOW FROST LINE
- #5 4x4 POST (5) ON UPPER DECK FOR SUPPORTS FOR ROOF w/ PROPER SUPPORT BRACKETS.
- #6 New Deck 12x12 w/ COVERED ROOF EXISTING DECK / NEW DECK BOARDS.

362-1268  
Fov  
wash

EDGE BEAM  
STRUCTURAL

10 W/ 2x4 BTM

FOOTING  
# 8" CMU BLOCK

2'x2'x1'-6"  
BELOW FROST LINE

(GYP) FOIL (5)

NOTES